

A Cold And the Consequence

The severe influenza epidemic which has swept the entire country, convinces all of us that it doesn't pay to neglect the so-called "slight cold." In fact, every cold is serious and should be treated as quickly as it appears. A neglected cold may result in Grippe, Tonsillitis, Pneumonia and other dangerous complications.

OUR COLD BREAKERS

Will relieve a cold over night. Put up in tablet form and are easy and pleasant to take. Price 25¢ and 30¢

We handle all of the well-known cold and cough remedies from the mild candy drops to cod liver oil preparations.

La Grande Pharmacy

Quick Delivery Phone Main 40
La Grande, Oregon

SHERRY'S

PERFECT VENTILATION

Today Only -- Vitagraph presents

"Kennedy Square"

A Romantic Story of the Old Square.

ALSO A COMEDY

BOIL DRINKING WATER
Owing to the shortage of water at Beaver creek it is now necessary to get part of the supply from the Grande Ronde river. All water needed for drinking purposes should be boiled as a precaution against germs or contamination. While the conditions at the river are much improved over former years, there being now little or no chance for contamination from the meat company's plant, the city health board urges boiling of drinking water as a precautionary measure.
JOHN COLLIER,
City Manager.

EMPTY GUN BLUFF WORKS

PORTLAND WOMAN THROWS A SCARE INTO BURGLAR.

Makes Him "Hold 'Em Up" Until Police Arrive and Apply the Handcuffs.

Portland, Jan. 25.—With an empty revolver, Mrs. Etta Farrow, proprietress of the Jefferson apartments, 205 1/2 Jefferson street, held a burglar captive yesterday until Patrolman Fones arrived and took charge of him. The prisoner is the second man she has arrested on a charge of robbing the apartments, of which she has charge, the first being James Fitzgerald, whom she caught last July under similar circumstances.

The prisoner gave his name as E. L. Motley. Mrs. Farrow says she saw him walking up the stairway and thought his appearance suspicious. She determined to watch him, and, stepping into a closet, she waited until she heard him knock on the door of apartment No. 11, occupied by Mrs. C. Hill and her daughter, Miss Iris Hill. The landlady knew the hills were absent and when she heard a key rasp in the lock a few minutes later she ran to her own apartment and obtained her revolver.

Man Seen at Work Hastening to the room of Mrs. C.

SHERRY'S

MAY ALLISON SEEN IN GRIPPING MIMIC PLAY

"The Testing of Mildred Vane," a play so gripping and absorbing that it keeps its audience spell-bound for the entire performance, will be shown at Sherry's Sunday and Monday.

The story is so unusual that it deserves credit for its originality as well as its concise and well-built plot. Dr. Hernandez is a student of heredity and the supernatural and believes that the spirits of the dead mingle freely with the living—feeling pain and grief with their loved ones on earth. For a fancied wrong done to him many years before by Mildred's dead mother, he means to wreak his vengeance on the beautiful young girl and thereby make her mother's spirit suffer. His plan is to make the father of the beautiful girl to believe that she is the child of another man, thereby gaining a double revenge—making the father and daughter unhappy for life and discrediting the young debutante in the eyes of her lover and friends. Through the love of a good man, however, the plot falls, and Hernandez' evilness comes to light in time to prevent unhappiness to those he hates.

Miss Allison is supported in this remarkable offering by Darrell Foss who plays the leading male role of Albert Moreland, the young professor of Greek, Nigel De Brullier, as Mathew Vane, her father, George Fields as Dr. Miguel Hernandez and Fred Goodwin as Ralph Jeffries. The direction was the work of Wilfred Lucas.

W. Seymour, she discovered Miss Iris Hill visiting there, and informed her that the Hill apartment was being robbed. Miss Hill told Deputy District Attorney Cahalin that she then peeped through a keyhole into her own bedroom and saw the man ransacking bureau drawers and boxes.

With Mrs. Seymour, Mrs. C. L. Ballard, 121 Farragut street, and Miss Hill, Mrs. Farrow posted herself in the corridor around a corner from the Hill apartment, on the path which the supposed burglar must pass to leave the house. They heard him come from the room, knock on a door across the hall, but they stood silent until the man came around the corner.

Then Mrs. Farrow covered him with the empty revolver.

"Throw up your hands!" she ordered. "Don't shoot! Don't shoot!" Mrs. Farrow says the man implored.

"Keep 'em up; keep 'em up!" she replied grimly, reasoning with the revolver.

Intruder Is Nervous. The intruder flinched. Patrolman Fones says the man confided to him that he was vastly relieved when the policeman took him in custody.

"I was afraid that revolver would go off and kill me any minute," he said.

HINES ASKS LARGE SUM FOR RAILROADS

(Continued from page 1)

advances for inland waterways, all but about \$500,000 representing investment in boats and other property, \$4,361,000. These items total \$685,806,000.

Liable for \$881,806,000. This sum, together with the \$196,000,000 loss to the government on account of the differences between operating income and returns guaranteed the roads, make \$881,806,500 for which the government would be liable on account of 1918 operations when all railroad accounts for the year are settled. The addition of \$368,193,000 estimated requirements for 1919 makes \$1,250,000,000 estimated drain on the revolving fund for both 1918 and 1919, and with allowance for the \$500,000,000 already appropriated, the new needs are computed at \$750,000,000. The director general refers to this as a minimum requirement and all figures are subject to later revision.

This report also shows that the present revolving fund is \$381,806,000 too little to settle all accounts for 1918.

Must Be Provided Quickly. "A very large part of these expenditures must be provided for in the first few months of 1919," said the director general, "and we are compelled to allow for the situation during the period prior to the next Liberty loan campaign and during that campaign it would not be desirable nor practicable for railroad corporations to do a large part of their own financing."

"Whether government control shall continue until the end of the twenty-one months' period or shall be terminated in the next few months, it is equally necessary that the appropriation above recommended be made. If

New Clothes

FIRST SHIPMENT OF SPRING SUITS



FIRST SHIPMENT OF SPRING SUITS—While many stores are endeavoring to dispose of Winter Suits at so-called reduced prices, we are, as usual, far in advance in showing the new, snappy 1919 models—new cloths, weaves, and patterns.

Marked and Will Be Sold at Peace Time Prices

Make your selection early. We positively guarantee to sell you the latest at far below the PRICE ASKED for manufactured war-time Suits.

PEACE TIME PRICES \$17.50, \$18.50, \$19.90, \$22.50, \$24.75, \$27.50, \$28.50, \$32.50, \$34.75, \$37.50.

Goods at Peace Time Prices

J. C. Penney Co.

Incorporated
197 BUSY STORES

Goods at Peace Time Prices

PAY NOW.
January 30th is the date for final payment on Fourth Liberty loan bonds. La Grande National Bank. 1-25-19

Prices you can afford to pay for your spring suit. New Novelty suits \$18.50 to \$25.00. Well known Royal Tailors will make you the new military suit for the nifty dresser. The Toggery. 1-25-19

The new thing for young men: Close fitting military buck. All the go in all the big college towns. We will make them up for you. Royal Tailor line, for \$18.50 to \$25.00, for the months of January and February. Call and see them. The Toggery. 1-25-19

State marketing bureau to be created by legislature.

Observer advertising will bring results.

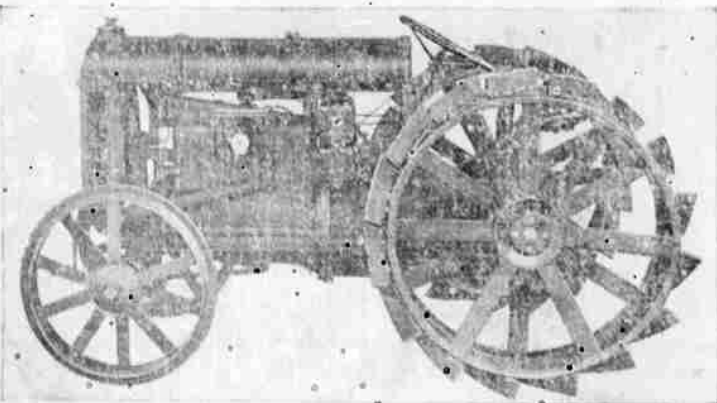
FOR SALE OR TRADE
One grader for ditching, leveling and grading—\$100.00.
FOUR WHEEL SCRAPER with apron.
One 600 GALLON SPRINKLER.
Four DUMPWAGONS.
Six dump boxes and lots of small tools.
All the above implements are automatically operated by teamster without getting off from it—these are necessary implements for any progressive farmer. You can buy same at your own terms.
WKly 1-17-19. J. MARE

Y. M. C. A.
Educational Department. Short-hand and typewriting. Day classes, 10:00 a. m. to 3:30 p. m. Night classes 7:30 p. m. to 9:30 p. m.

Fordson Tractor

The Universal Tractor

MADE BY HENRY FORD



IN THE FIELD

- PULLS
- Plow
- Harrow
- Disc
- Seeder
- Mower
- Binder
- All other farm implements.

ON THE BELT

- Thrashing Machine
- Silage Cutter
- Feed Grinder.
- Irrigation Pump
- or any
- 22 H. P. Load.

L. C. SMITH DISTRIBUTOR UNION AND WALLOWA COUNTIES

Let Your Dollars Work for You

at the Store where their Purchasing

Power is ALWAYS the Greatest

Fresh Creamery Butter, two pounds for	\$1.10
Fresh Ranch Eggs, per dozen	55¢
Pure Comb Honey, each	28¢
Delmonte Solid Pack Tomatoes, No. 2 can	15¢
Royal Club Solid Pack Tomatoes, No. 2 1/2 can	19¢
Sugar Peas, gallon can	59¢
Libby's Sour Kraut, No. 2 can	13¢
Cherry Stone Oysters, large size	17¢
Delmonte Sardines, 1-pound can	22¢
Carnation or Sego Milk, per can	16¢
Oranges, per dozen	25¢ 30¢ 35¢ 65¢ and 85¢

THE STORE WHERE THE THIRTY THROU

HOOVERIZED GROCERY

United States Food Administration License No. G50274

SAM HARRIS, PROPRIETOR
Next Door to Hill's Department Store

Union Store
Open 8 a.m.
Close 8 p.m.
Saturday open until 8:30 p.m.