

Like a Breath of Spring New Silk "Fitrite" Petticoats

What a pleasure every style-loving woman will have "getting into" them! Just a hint of the wondrous variety will set your curiosity going.

Soft Chiffon Taffetas in the new clinging, straight lines.

Changeable Taffetas Glace Taffetas and Smart Jersey Top Styles

These in pleasing soft colors. Round to be an effect for every taste — plain silks, changeable with plain silk flounces, new combinations of changeable tops with Dresden flounces.

Plenty of Extra Sizes

Moderate Prices

The "Fitrite" manufacturer makes petticoats exclusively, and through year-ahead planning and buying of materials — these new petticoats values are fully 25 per cent better than ordinary kinds. They represent the acme of style, quality, fit and value. See them tomorrow.



What This Label Means

The patented Fitrite adjustment feature means perfect-fitting Petticoats WITHOUT the use of hooks and eyes, binding elastic or visible strings. Ask for demonstration.

Prices, \$4.00 to \$9.00

Hill's Dept. Store

GET STARTED NOW BY PLANNING YOUR SPRING GARDEN

Because of the splendid soil conditions in many parts of La Grande we may look forward to even larger vegetable crops of the back yard and vacant lots than we had last year.

Intensive cropping is far preferable to extensive cropping this year whether moisture is available or not because of labor shortage.

The practical carrying out of a planting plan for the vegetable garden requires considerable forethought and previous preparation; now is the time to do the planning. Seeds of many varieties are scarce this year; therefore I advise placing your seed order in good time, and if you do not buy of a good reliable seed house in the East, patronize one of the several credited seed houses in Oregon, where you have the service of seed testers. It costs no more. Purchase the best seed procurable; the matter of cost is a detail, but may make all the difference between profitable and profitless crops. Remember that it takes just as much time to prepare the ground and cultivate poor as good seeds; therefore don't be misled by the cry of cheapness.

Another point worth remembering is that home gardening is a most profitable recreation, the products of the home garden representing the labor income of otherwise lost time.

Soil preparation can wait a little as it will be several weeks before we can do anything on the ground; but now is the time to make our plans, that there may be no waiting no haphazard sowing when the Spring weather opens.

One of the bugbears is to select just what is best from the bewildering offerings of the average seed catalog. Then there arises the question: "How much of each do I want?" Now the only practical way to go about the matter is, first, to make a careful plan of the available space at your disposal. Your measurements must be fairly correct so that you may plan the most profitable use of the cultivated land.

The following are horticultural varieties which will grow best in La Grande and outlying districts:

BEANS: The Kentucky Wonder is the best green pole bean, matures early, and has a long season. The Brown Bayou, a bush variety, are the beans to plant if you wish to store them dry for the next winter's use.

BEETS being a root crop will do well in the early Model or Detroit Dark Red. Try sowing them thickly and then thinning the baby beets out for greens.

CABBAGE: The Early Jersey Wakefield and Danish Ball heads yield well. Count on about two dozen heads to be used fresh and one dozen extra for a 10 gallon crock of your kraut.

CARROTS: Danvers' Half Long is a large variety, while the Oxheart is a shorter variety, sweet in flavor and excellent for home use. These, too, may be sown rather closely and then thinned out, using the small ones for canning and leaving the larger ones for table use and dry storage.

CAULIFLOWER: The earliest of all the standard varieties everywhere is the Early Snowball. It is small, very early, pure white, and always sure to head. Can be set very close together.

CELERY: One of the best in quality and one of the easiest to bleach, is Golden Self Bleaching; medium to large size, (creamy white) healthy and vigorous. Will bleach itself if shaded on sides, but does better if completely shaded or banked up with dirt. Another variety much like this one, but earlier and slightly smaller, is the White Plume.

ASPARAGUS: Palmetto asparagus is one of the largest and most tender varieties of this appetizing green. It may take several years to make a good bed but you will feel doubly repaid, in the products.

GREENS: Swiss Chard as well as Scotch Curly Kale, Kohl Rabi, and Victoria spifach are splendid varieties of greens and grow well throughout the season. These may be used in early fall cropping.

SWEET CORN: The Golden Bantam is well adapted to our climatic conditions.

LETTUCE should be fresh and crisp throughout the season with a little extra care. Start your seeds in a hot bed in the early Spring. Only plan a small bed at a time but keep it going. Start with a Simpson or Cos, set out early and not too close. Keep the soil well moist and if the sun becomes too hot shade the lettuce with a plank set up against pegs placed at each end of the row on the South side, or stretch a cheese cloth over the entire bed which is tacked to pegs set around the bed. Later the New York and Hanson will give you solid head lettuce.

ONIONS: Of the dry variety the yellow Danvers will give excellent results.

PARSNIPS: Hollow crown or Tender Heart will give good Fall crops.

EARLY PEAS: If several varieties of peas are planted at the same time, or the same variety is planted at different times, the season of "new peas and early potatoes" may be extended. Peas, as a rule, should be planted early in the Spring while the ground is cool and moist, as they never do well in the hot part of the summer and very often will not come up at all when the

BRAINS AND BEAUTY WON



ELSIE FERGUSON, STAR IN ARTCRAFT PICTURES

The most astounding example of unexpected development in the motion picture firmament is Elsie Ferguson. That in itself comes her against the background of other unusual performances in this field. By no means has she been alone in her climb to stardom, both on the stage and on the screen. She, however, gave less evidence of any intention. She just struck

and landed head, shoulders and feet above any level the others reached. That is the astounding part—the complete unexpectedness of the development. And they ask how it came to be? One answer only. Back of her beautiful face is a brain capable of turning out workmanship of the most delicate filigree in her art. She proves this most conclusively in her next Artcraft Picture, "The Song of Songs."

ground is hot and dry. The American Wonder Laxtonia is the sweetest early pea there is; and following comes the little Marcol.

TURNIPS: Either the purple top or white globe, will do well for an early or late crop; you can not get them in too early after the ground has thawed. They should be thinned out, to at least six inches apart in the row. Most people let turnips stand too thick. That makes them small and tough and bitter.

POTATOES: Peerless, Burbank, Gold Coin and Noted Gem, have yielded splendidly and are all dependable varieties.

TOMATOES of the Earliana variety grew in abundance last year and will certainly do as well this year if you take the precaution of starting the seeds in a hot bed and have the plants ready to set out with the early cabbage.

The Community Committee organized in La Grande is under the efficient leadership of Mrs. Gilbert Curtis, as was the case last year, with the result that 117 acres was planted to gardens within the limits of the city during 1917, and many families have been supplied throughout the winter with stored, canned and dried vegetables. If anyone in La Grande has a vacant lot especially where any moisture is available which they cannot use this Spring and Summer, your Government asks that you turn

this lot to the Committee in charge, for the Summer months. Any individual, old or young, desiring such a vacant lot will also turn in their requests to the Committee which is in position to act as a clearing house. Absolutely no rent is to be charged and no fee paid for the use of the ground or services rendered by your Community Committee.

The big problem of when the war will end seems to be a question of Germany's man power. And her man power relies directly upon the amount of food which she produces. As people against people, are we going to out-wit her in actual food production. Your efforts will overshadow the results. Nothing succeeds like success.

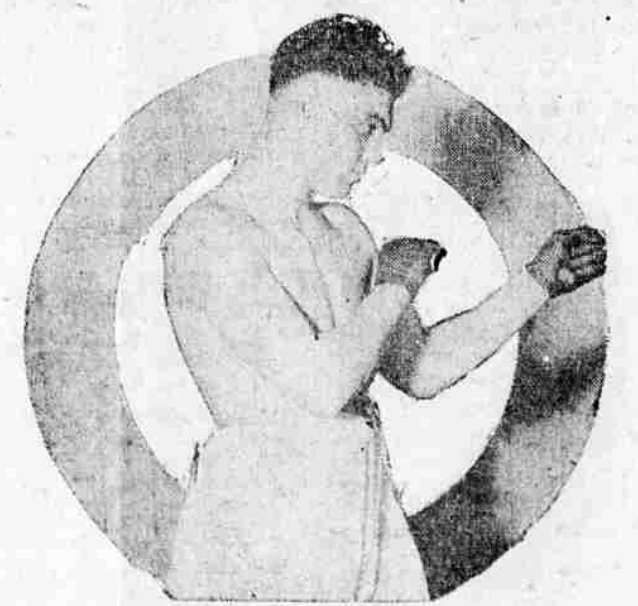
MAY MURPHY, Emergency Home Demonstration Agent.

RETREAT OF THE GERMAN AT ARRAS

All the Daring, Dapper and Deltium of War.

The Retreat of the Germans at the Battle of Arras, official war pictures of the British Government, were made under the direction of the British Government and were brought to this country by Captain Daines of the British Army and

COAST SENDS YOUNGSTER TO TAKE WHIRL AT WILLARD'S TITLE



Out of the west has flashed a new meteor of the boxing world. Jack Dempsey, young husky and ambitious, has designs on Jess Willard's jealously guarded title and appears to be the most likely contender in the heavyweight ranks. Dempsey's great handicap at present is his lack of experience. He has only been in the ring again for about three years and most of his battles have been in California where bouts are limited to four rounds. About two years ago Dempsey made his first eastern appearance when he blew into New York and knocked out Wild Burt Kenny and Andre Anderson in quick succession. He out fought John Lester Johnson, a big clever negro in 10

rounds but could not stop him. Dempsey then went back to the coast and placed himself under the management of Jack Kearns who immediately guided him toward the championship. His most notable recent bouts have been with Gunboat Smith, Carl Morris and Homer Smith. Dempsey beat Morris and Smith on the coast and later gave Morris such a pummeling in the east that Carl resorted to his favorite tactics and fouled himself out of the match in six rounds. Dempsey received his early training in a northwest lumber camp where his prowess as a good two-fisted man won him respect from the best fighting lumberjacks of the country.

SEEDS

WE HAVE ON DISPLAY FOR YOUR INSPECTION THE MOST COMPLETE STOCK SEEDS IN UNION COUNTY. BULK OR PACKAGE. NORTHERN OR CALIFORNIA-GROWN SEED.

This Is the Year to Plant Every Available Spot so That You May Do Your Duty by Increasing the Production of Food.

BUY WHILE THE ASSORTMENT IS COMPLETE.

Onion Sets Will Be Very Short This Season

HARRIS GROCERY

Phone Main 70 and 77, Farmers Block 192
408 North Fir Street Across the Track
"United States Food Administration License No. G50255."

William K. Vanderbilt of the official Government Pictures, Inc., to exploit the film for charitable purposes. The proceeds realized through the rental of the pictures are to be divided equally between the American and British Field Ambulance Corps.

"The Retreat of the Germans at the Battle of Arras" shows the heroic drive of the Allies in every detail. It brings to every spectator the dust and smoke and death of actual warfare. You see the great guns spouting steel. You see the machine guns raining lead. You see the hand grenades explode. You see the shells burst and blow whole detachments high into the air and dig high craters into the soil. You see the rush over the tops of the trenches and with the aid of the great British tanks finally reach a German trench.

The management of the Star Theatre has secured these pictures for exhibition at that theatre each Thursday and Friday. They are really a great twelve reel feature but they have been divided up into two reels each which will be shown each week.

Stock Show Likely to Continue.

UNION, Feb. 25.—(Special).—A meeting of the officers and stockholders of the Union Stock Show association will be held this evening to discuss the advisability of holding a meeting this year. From the sentiment expressed from various sections of the county the forecast is that the stock show will be held as usual.

Poor Season for Ice. This is one of the winter seasons when the Grande Ronde river so far has failed to freeze over and the prospects point to an iceless summer for many. Those who have been accustomed to a supply of natural ice have been compelled to rely on shipments from North Powder or else fall back on the next line of defense which will mean to do without ice altogether.

NEW SOLICITOR OF LABOR DEPARTMENT



John W. Abercrombie, former congressman from Alabama, has just been appointed solicitor of the Department of Labor by President Wilson.

SHERRY ARCADE

SEASIDE SCENES IN METRO'S "DAYBREAK"

Atlantic City's famous boardwalk and beach figure prominently in the important closing scenes of the Metro production, "Daybreak," starring Emily Stevens, which will be the attraction at the Sherry Theatre today for the last time.

The Metro players went to the fashionable seaside resort to stage the scenes showing the happenings which bring about the reconciliation between Edith Frome (Emily Stevens) and Arthur Frome (Julian L. Strang). A little beach party was staged with non-professionals, who were guests at the hotel where the players made their headquarters. A piece of the famous politician, Charles Murphy, the chief of "Tammany Hall," appears prominently in the beach scenes.

Other scenes were taken along the boardwalk and will afford many people who have never visited the resort an idea of the life at the fashionable beach. One scene shows Arthur Frome meeting his child and taking him to a typical boardwalk shop and buying him a host of toys.

"Daybreak" is the initial Metro production to be directed by the famous French director, Albert Capellani, who is known as a master of screencraft.

Selling more cigars all the while; try them at see why. La Grande Pharmacy. 2-18-17

MRS. DANE'S DEFENSE

Pauline Frederick in Wonderful Drama New Comedy.

In her latest Paramount photoplay, "Mrs. Dane's Defense," Pauline Frederick's portrayal of a woman hunted to the last stand, straining every nerve to hide the deceit of her life and finally succumbing in a most human way, is a masterpiece and entirely up to her usual high standard. "Mrs. Dane's Defense," which was adapted for the screen by Margaret Turnbull, the well known scenario writer, has been directed by Hugh Ford who has directed Miss Frederick in many of her stage and screen productions.

Pauline Frederick in "Mrs. Dane's Defense," is one of the attractions at the Arcade today and tomorrow. The other attraction, and those who have seen them the last few weeks will agree that they are attractions, will be one of the new Paramount-Mack Sennett comedies. The one this week is called "A Bedroom Blunder," and, with Charles Murray, Wayland Trask and Mary Thurman in the leads, it is useless to say that the fun moves along in rapid-fire order.

Chamberlain's Tablets.

These tablets are intended especially for disorders of the stomach, liver and bowels. If you are troubled with heartburn, indigestion or constipation they will do you good. Adv.

ARCADE, TODAY AND TOMORROW



PAULINE FREDERICK in "Mrs. Dane's Defense" A Paramount Picture

THE HOTEL JENNINGS

DO YOU want to save all you can to buy W. S. Stamps? If so, stop at the Jennings Hotel at Joseph, as it has now changed hands and is a first class hotel. We are now equipped to solicit your patronage. It is well heated, with no extra charge.

Headquarters for Lake Wallowa Tourists and Commercial Men. Auto Bus Meets All Trains; Autos for Hire. Office, Joseph-Enterprise Auto Bus Line, Handling Passengers and Baggage

Pauline Frederick

"MRS. DANE'S DEFENSE"

Scenario by Margaret Turnbull - Directed by Hugh Ford



PAULINE FREDERICK in "Mrs. Dane's Defense" A Paramount Picture

A powerful heart interest story, portrayed by the screen's most emotional actress.

TODAY AND TOMORROW

PARAMOUNT-MACK SENNETT COMEDY
"A BEDROOM BLUNDER"
With Charles Murray, Wayland Trask, Mary Thurman

Arcade Theatre