



"Your dime goes further," says Charlie Penn

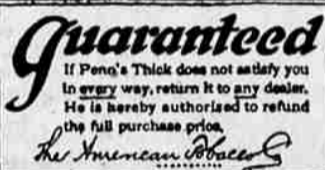
"When you buy Penn's Thick you get a better and longer chew because Penn's Thick is made only from full-length strips of rich, ripe, perfect leaves of Kentucky white burley tobacco."

Charlie Penn

Manufacturing Expert of The American Tobacco Co., and a famous authority on the manufacture of chewing tobacco.

PENN'S THICK Chewing Tobacco

"IT'S AS MELLOW AS A JUNE APPLE AND AS SWEET AS A NUT"



TRY A 10c CUT TODAY

NOTICE—If your dealer does not carry Penn's Thick, send ten cents (10c) in stamps and give us the name of your dealer, and we will send you a 10c cut and a leather pouch in which to carry it. Tobacco Company of California, No. 1 South Park, San Francisco, California.

COLONIAL THEATRE
(Continued from Page 2.)

basket, a baby's stocking, and divines the truth. He compels Esther to board the Alden Besse, locking her in a cabin. Then he seeks out Caleb Tilden, in a fight, believes he has killed him.

Tilden, however, has simply been stunned and when Whitaker throws him from the wharf his sudden immersion in the cold water revives Tilden and he manages to crawl to a string-piece under the dock. At that moment the Alden Besse is sailing, and Tilden watches her with frenzied interest. He sees Esther as she runs to the stern and attempts to jump overboard. Esther's father

drags the girl back to her cabin and there she is securely imprisoned. The cook of the craft, Ebon Wiggs, is the only man on board who has any

sympathy for the girl. The cook cares for her, even when her child is subsequently born.

Babcock is sailing in the Alden Besse, and when Whitaker tries to compel his daughter to marry the mate, Esther declares that she will throw herself into the sea before allowing her father to conclude the marriage ceremony. Whitaker, in disgust, abandons his purpose. Later the seamen join in a mutiny and kill Whitaker, their leader being Jacob Babcock.

In the meantime, Tilden has tried to come upon the Alden Besse by shipping as a sailor in a craft that sailed the same sea the Besse usually did, and has found her lying in Panama Bay. When he attempts to board the Besse, Captain Whitaker thinks he sees the ghost of the man he believes he has killed, and drives Tilden from the ship.

Tilden returns home and waits for the return of the Alden Besse. The mutiny has broken out as the ship is approaching her home port. There is a fierce storm approaching at the time, and when it breaks the Besse is wrecked. Tilden heads the villagers who go to the rescue, and is the one who wades into the water and secures a raft upon which Esther and her baby have been lashed by the cook. The reunion follows and the final cruise of the Alden Besse becomes tradition.

This is the story of the Bluebird photoplay announced as the attraction at the Colonial theatre on Friday and Saturday with Myrtle Gonzalez, Val Paul, and George Hernandez playing the principal roles.

If Esther Whitaker had bowed to her father's will and married the first mate of his sailing vessel, the Alden Besse, there would have been a life of misery for her. And just because she married the man of her choice, trouble followed just as unfailingly. With no way out of it the girl made the choice her heart directed and the outcome will be told in beautiful Bluebird photoplay.

NOTICE OF ANNUAL SCHOOL MEETING.

Notice is hereby given to the legal voters of School District No. 1 of Union County, Oregon, that the Annual School Meeting of said District will be held at old High School building; to begin at the hour of 2 o'clock p. m. on the third Monday of June, being the 18th day of June, A. D., 1917.

This meeting is called for the purpose of electing two directors and the transaction of business usual at such meeting.

Dated this 1st day of June, 1917.

ATTEST:
CHAS. H. REYNOLDS,
District Clerk.
J. E. REYNOLDS,
Chairman (Board of Directors).
—June 4-8-12-16.

Whooping Cough.
In this disease it is important that the cough be kept loose and expectoration easy, which can be done by giving Chamberlain's Cough Remedy. Mrs. P. H. Martin, Peru, Ind., writes, "My two daughters had whooping cough. I gave them Chamberlain's Cough Remedy and it worked like a charm."—Adv.

Our BIG COFFEE Sale

STARTS MONDAY, JUNE 11, AND CLOSSES SATURDAY, JUNE 16

With each five-pound purchase of Chase & Sanborn's Seal Brand or Crusade Coffee, we are going to give one pound FREE. Coffee will be higher so buy yours NOW.

FRESH STRAWBERRIES FOR SUNDAY

J. G. Snodgrass Grocer

Phone 43 Service Honest Prices

Three Small Houses To Be Sold Quickly

- 1 Two-Room House and 3 nice lots, near Palmer Mill and Round House.
- 1 Four-Room House and 1-2 acre fine garden ground, planted, a few fruit trees. Near Greenwood School.
- 1 Five-Room House and large sightly lot on N Ave. Room for another cottage.

FURNITURE in two small houses. Real bargains to close at once.

MR. WORKINGMAN, here is your opportunity to furnish your home for little money.

Here is an opportunity for a wage earner to own a home while paying rent. Small payment will place you in the house and most liberal terms.

Terms can be arranged. No Phone, Call at House

F. D. HAISTEN
1202 N. Ave. & 6th St.

MUTINY

The Latest Lynn F. Reynolds' Contribution to the Screen

Introducing

Myrtle Gonzales Val Paul and George Hernandez

In a Tale of Adventure by Land and Sea

Sensational Scenes
Exciting Incidents
Gripping Episodes
Stirring Episodes

There is a shipwreck in "Mutiny" that is positively the most thrilling scene ever shown in motion pictures.

FRIDAY & SATURDAY

COLONIAL

Store Closes at 12:30 for the Rest of the Day

STRAWBERRIES

- | | |
|-----------------|-------------------|
| Fresh Peas | Radishes |
| Cauliflower | Green Onions |
| Rhubarb | Head Lettuce |
| Spinach | Hot House Lettuce |
| Fresh Asparagus | Beets |
| Turnips | Cabbage |
| New Potatoes | |

Now is the time to Make Garden—We have Seeds of all kinds

The City Grocery & Bakery

The Home of Fancy Groceries
PHONE MAIN 75

The Public is Cordially Invited to Attend the

Opening of the

Modern Laundry

Saturday Evening June 9th, 7:30 to 9:30

All machines will be in operation by expert employes. We want you to see them, especially do we want the men to see our latest style collar ironing machine. The only machine like it in Eastern Oregon. Positively does not stretch your collars.

Carnations For the Ladies While They Last

Modern Laundry Inc.

C. C. PENNINGTON, Mgr.