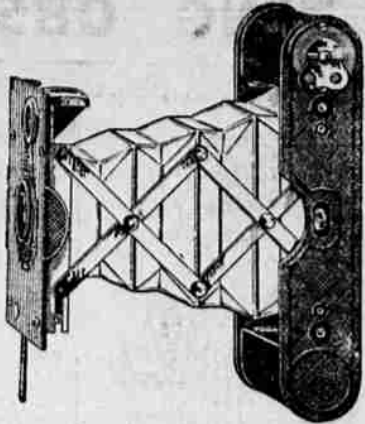


For Your Soldier or Sailor Boy, a

**Vest Pocket Kodak**

PRICE \$6.00



So small that he can wear it; so photographically fit that good pictures follow as a matter of course. Its presence in his kit means relief from the monotony of camp life; and the pictures he will send you will be even better than letters.

**Red Cross Drug Store**

to take good pictures. At Silverthorn's Family Drug Store they will take great pleasure in telling you all about a camera or kodak and what kind of attention you need give a kodak to secure the best pictures.—Adv. 5-26-tf.

To have a clear, rosy complexion it is necessary to give the skin the proper "food." Our preparations for the skin contain this food.—Levy-Vogel Drug Co.—Adv. 5-24-tf.

**Epworth League to Entertain.**  
Friday evening of this week the Epworth league of the Methodist church will entertain officers and members of Company M at the basement of the church beginning at 8 o'clock. Several week-end parties and receptions have been given at that church, and the coming event is one of the series. The soldiers, and friends and members of the league, are urged to attend. Games will be played and refreshments served.

**6 1-2 Per Cent Term.**  
\$30,000 for long term at 6 1-2 per cent interest for loans on Grande Ronde Valley farms. See W. B. Sargent at La Grande Investment Company at once. 2-2-tf

**New Red Cross Members.**  
The list of new Red Cross members follows: Mr. and Mrs. William Miller, William Miller, Jr., John E. Miller, Miss Gladys Miller, Mr. and Mrs. U. G. Couch, Mrs. J. H. Keeney, Mrs. H. H. Hug, Celia Bolman, Alma Gore.

**Misses Jones and Rabone.**  
Ladies' Ready to Wear. We are now showing all the new goods in suits, coats, skirts and waists. We make suits, coats and skirts to order. Remodeling done. 3-12tf

Don't forget the ice cream social at the Christian church Friday evening, June 1.—Adv. 5-30-2t.

Distinctive clothing for those who want the best.—Levy-Vogel Drug Co.—Adv. 5-24-tf.

**Money to Loan.**  
On improved real property in Union county, no delays, current rates. La Grande Investment Co.—Adv.

We carry a fine and complete line of fishing tackle, the kind that gives satisfaction.—Levy-Vogel Drug Co.—Adv. 5-24-tf.

We pay highest prices for second hand furniture and sell it for less.—Harris Furniture Company, Phone Red 3171.—Adv.

**The Observer On Sale.**

When in Portland you will find The Observer on sale at the Oregon Hotel news stand and Imperial Hotel.

Don't forget the ice cream social at the Christian church Friday evening, June 1.—Adv. 5-30-2t.

A complete line of Universal Vacuum Bottles, Food Jars, Lunch Sets, etc.—Levy-Vogel Drug Co.—Adv. 5-24-tf

**Rug Attracts Attention.**

A handsome rug in front of the Arcade theatre last night attracted a great deal of attention and comment. Some people shied from it as if they were afraid to step on it. The rug is put there by the Carr Furniture Co. and is a unique advertising stunt to demonstrate the wearing qualities of the rug.

Ask for Palm Oil soap—3 bars for 25c. Soothing and healing.—Levy-Vogel Drug Co.—Adv. 5-24-tf.

If you have an Eastman or an Anco camera we can furnish you every supply. Eastman Autographic Films, Anco Speedex Films, Packs, Plates, Azo, Velox, and Cyko Papers and Cards. Expert finishing our specialty.—Silverthorn's Family Drug store.—Adv. 5-16-tf.

**Second Hand Furniture.**

We pay best prices for second hand furniture. DYAL'S FURNITURE CO., 404 Fir St., Phone Black 3361.—Adv. 12-4-tf.

We pay better prices for used furniture. Phone B 1241. Cor. Fir and Jefferson. E. J. Donokue. 12-20-tf

We pay highest prices for hide and sheep pelts. Peoples' Meat Market, 1419 1-2 Adams Ave.—Adv. 12-5-tf.

Bring your friends and come to the social at the Christian church Friday evening. Everybody welcome.—Adv. 5-30-2t.

We invite you to use our free public phone. Phone service and rest room always at your service.—Levy-Vogel Drug Co.—Adv. 5-24-tf

**Singer Sewing Machine.**

New and second-hand machines sold on easy terms. No interest. Repair work a specialty on all machines.—Chas. M. Shapland, agent, New Foley Bldg. Phone Black 1051.—Adv. 1-17tf

**WHAT ARE THE POINTS OF DISPARABILITY** about your house or apartment? What facts do possible

**Another New Shipment of Silk & Wash Waists**

Every new shade in this new assortment including gold, mustard, coral, flesh, and greens. Made with fancy shaped collars—some trimmed in contrasting shades.



Silk Waists ..... \$2.00 to \$5.85  
Creme De Chene Waists ..... \$2.00 to \$6.50  
Georgette Waists ..... \$4.48 to \$7.50

**Wirthmor \$1.00 Waists**

(Always worth more)

New Voile Waists ..... \$1.00, \$1.38, \$2.00  
Misses' Wash Middies ..... 63c to \$1.17  
Ladies' Wash Middies ..... 98c to \$1.38  
New Sport Middies ..... \$1.28  
Misses' Sport Skirts ..... 98c, \$1.28

**THE GOLDEN RULE CO.**  
Quality the same—Prices less

tenants want to know before making a personal inspection? Put these facts into your advertisement, and awaken an INTEREST in what you have to offer. This will put you in touch with the class of tenants who are careful and discriminating in choosing a place to live—and these are the best possible tenants.—Adv. 9, 23, 30 tf.

**Coming Events**

- May 30—Col. W. G. Scott speaks at Salvation Army Hall; evening.
- June 3, 2 p. m.—Company M Field maneuvers at Elgin.
- June 4—Special Election to Vote on State Road Bond Issue of \$6,000,000.
- June 3, 4 and 5—Epworth League Convention at Alice.
- June 5—Registration day for U. S. Army.
- June 5—Tag Day for benefit of Red Cross.
- June 8 and 9—Oregon State Bankers' Association at Marshfield.
- June 8, 9, 10—Older Girls' Conference.
- June 13, 14, 15—Livestock Show at Union, Oregon.
- June 19—O'Neill vs. Christensen, championship wrestling contest.
- June 25 and 26—The Women of Woodcraft District convention.
- June 27 to July 3 (inclusive)—Grand Ronde Chautauqua, La Grande.
- July 7—National Education Association in Portland.
- July 14-19—North Pacific Sanger-fest, Portland.
- July 13, 14, 15—State Editorial Association at Pendleton.
- July 21-22—"Speed 'em Up" motorcycle and auto races at La Grande.

**AMUSEMENTS.**

Arcade Theatre—Motion pictures.  
Colonial Theatre—Motion pictures

and vaudeville.  
Sherry's Theatre—Motion pictures.

**LOCALS & Advertising in Brief**

**RATES**  
Per line, first insertion ..... 10c  
Per line, additional insertion 5c  
Per line, per month ..... \$1.00  
No locals taken for less than 25c  
Count 6 ordinary words to line.

**Floral Tribute Arrives.**

A beautiful floral offering arrived today addressed to Mr. and Mrs. Fred D. Haisten from the comrades of William Claude Haisten in Company D 5, United States Marine Corps. The flowers were placed upon his grave, with other beautiful flowers. The floral offering was sent by express prepaid by the United States government, which shows how the government participates and approves of honoring its soldier dead.

Bring your friends and come to the social at the Christian church Friday evening. Everybody welcome.—Adv. 5-30-2t.

It is worth your while to take good pictures and to learn all about how

**SEE THE WHITTALL RUG On The Sidewalk**

One Day of Wear on The Sidewalk Exceeds Ten Years of Wear in The House

**WANTED AT ONCE!!! 100,000 People To Walk On This Rug**

We Want The Sun To Shine--The Dust To Fly--We Hope It Rains. We Want To Make This The Most Severe Test Possible For a Floor Covering. The Rug On The Sidewalk is a WHITTALL ANGLO PERSIAN, Size 9 x 12

We Positively Guarantee That This Rug Was Taken From Our Regular Stock and Was Not Specially Made For This Sidewalk Demonstration. You Can Always Buy One Like It--Right Here In This Store--ANYTIME.

**The Sidewalk Test What it Means to You**

The Sidewalk Test is made for your benefit and for the benefit of every housewife who wants to know just what she is buying. THE SIDEWALK TEST PROVES THE WORTH OF WHITTALL RUGS. Seeing is believing. It allows the people in this community to see for themselves just what use and just what abuse a really good rug will stand. One might as well test glass with a hammer as to put an ordinary rug on the sidewalk. This is where the weak must fall by the wayside and where Whittall Quality Reigns Supreme.

**Whittall Wilton and Body Brussels Rugs**  
Are made in ten different grades, Woven to order in special sizes

There is a Whittall Rug for every room in every home

**Carr Furniture Co.**

**What Becomes of The Rug**

This rug will be left out on the sidewalk for 10 days including two Saturdays. Then it will be washed with ordinary soap and water just the same as you would wash a handkerchief. It will then be placed in our window so that every one may examine it closely.