

# New Spring and Summer Silks

An unusual demand for Smart Styles suited to the varying requirements of the woman who looks for and expects the utmost in silk fabrics will find us exceptionally well prepared.

- Taffeta Silks, all latest stripes, checks and plain, yard \$1.00 to \$2.25
- Latest Stripes in yard wide Silk Poplin, yd. \$1.48
- Striped and figured Pongee, yd. 60c to \$1.40
- All Colors Skinner's Satin, yd. \$1.50 to \$1.98
- New Colors in Silk Jersey Cloth, yard wide, per yard \$2.75
- Yard Wide Satins \$1.00 to \$1.98
- Georgette Crepe and Crepe De Chene, all colors \$1.48 to \$2.00

Visit our silk section—You will see some wonderful patterns.

## Hill's Department Store

Quality and Service

# AUTO PAINTING

No we do not do auto painting but we have all the colors, varnishes, top dressing, enamel, brushes, etc., that you need if you are going to paint your car yourself.

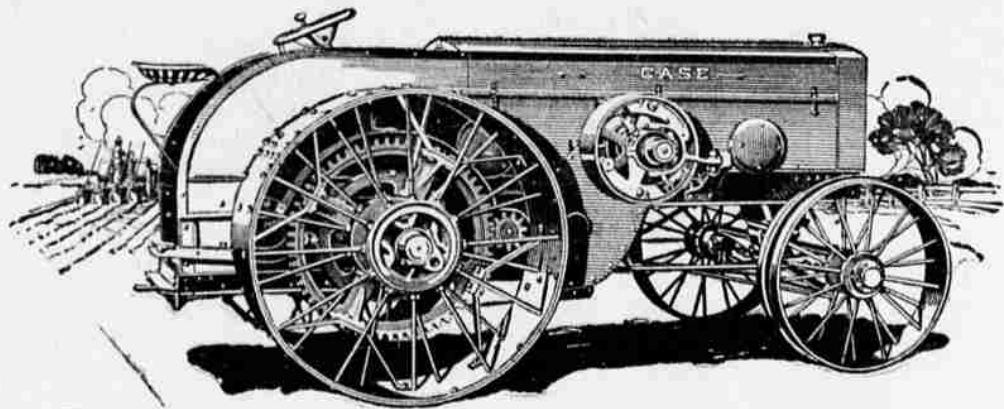
Why not get the small quantity needed for the job. Do it while the roads do not allow you to use the car?

## OXNER'S NEW PAINT STORE

(New Location 1316 Adams)

Job Printing quickly and neatly done at The Observer.

# Case 12-25 Gas Tractor



This 12-25 is the result of scrupulous and painstaking efforts in producing a mechanical masterpiece. Not only are the design, construction, material and workmanship of the highest standard known in the industry, but the efforts have been so harmoniously blended, the result is a masterpiece.

This tractor was designed with a view to meet every condition on the farm, and every use and operation that a tractor in its class should be fitted for. Its appearance is indicative of its power and durability. It is eminently suited for plowing, harvesting, and other field work; hauling and road work, threshing and miscellaneous belt operations; in fact, work of every description within its capacity. It pulls a four-bottom plow, two or three binders in high speed, runs a 26-in. separator with attachments.

The material is the best obtainable for every part, and is so distributed that every ounce is effective. The strength of every part is many times sufficient to withstand the strain imposed upon it in ordinary service.

The use of roller bearings has reduced the rolling resistance of this tractor to such an extent that one man can push it on the floor.

Most tractors do not possess these extraordinary qualities, but they add to the efficiency, economy, and durability of the machine, much more than the extra cost of the construction. The first few years the difference is revealed only in operating efficiency and economy, but after many years' service the tractor of lesser quality is useless, while this tractor continues to serve its purpose practically as well as the first few years.

BETTER BE SAFE THAN SORRY.

## See - J. A. CHANDLER

For Details and Prices

Dealer in J. I. Case Threshing Machinery and Page Woven Wire Fencing.

# SHERRY'S

PASSION FOR POWER IS RULING MOTIVE IN NEW THEDA BARA ROLE

Story of "The Vixen" Tells How One Woman Wrecks the Lives of All, to Gain Her Own Ends.

The passion for power is the ruling motive in the character of Elsie Drummond, the part which Theda Bara takes in her new screen play for William Fox, "The Vixen." Elsie's main idea in life is conquest of men who interest her, and who, she sees, can be useful to her in life.

Elsie is a young girl whose elder sister, Helen (Mary Martin), has acted the mother for years. The debut of the two in Washington society is the signal for the beginning of Elsie's sway. She meets Martin Stevens, a wealthy lawyer (A. H. Van Buren), who has been in love with Helen; but Elsie's powers draw him away. Only after he has been ruined through the wiles of the younger sister does he realize what has happened to him. Elsie, learning that he has lost all his money, and hence all his attraction for her, quickly gets rid of him.

In a search for fresh material, she once more comes across a lover of her sister. This time it is Knowles Murray (Herbert Heyes), member of the diplomatic service. He is about to leave for a foreign consulship, and Elsie decides to leave with him. To effect this, she contrives to make Murray believe that Stevens and Helen are having an affair. To Helen she says that Murray loves her, and asks:

"Why should three people be unhappy, if only one need be?"

See incomparable Theda Bara in this her newest success at Sherry's today and tomorrow.

The planting of the timber bamboo in northern Florida and Louisiana have grown to a height of 25 feet, and there is no longer any question about their producing in this country good canes comparable of those which they produce in China and Japan. A quick method of their propagation has been worked out so that it will now be possible to supply large enough quantities of the young plants to set out many small areas throughout the South, from the Carolinas to California wherever there is sufficient moisture and the land is not too high priced to admit of their cultivation.

Joy is the price of sorrow.

# ARCADE

"TRUTHFUL TULLIVER"

Five-Part Triangle-Kay Bee—Reviewed by George Graves in Motography.

There will be no dozing among the spectators sitting in front of this picture at the Arcade theater tonight for each one is kept so busy and thrilled watching the redoubtable William S. Hart clean up the town of Glory Hole that there is not even time for the usual chatting or love-making in the ranks of the spectators. All these things must wait until Mr. Hart has righted all wrongs, brought back the runaway lover who had wronged his (Hart's) sweetheart sister and taken the girl of his inspiration into his arms for the final fade-out.

For real red-blooded action and a story of unwavering interest, "Truthful Tulliver" ranks among the best of the Hart pictures and quite eclipses most of them. No stunt that he ever did could have been more sensational than his riding on horseback into a saloon, lassoing two men and riding out a window at the other end of the room, dragging the men after him and out into the street. This is the biggest of the picture's thrills. The western atmosphere of these Ince productions seldom varies in excellence, and it certainly has not dropped any in this picture. Alma Reubens has the part opposite Mr. Hart, carrying it off effectively. Norbert A. Myles, Nina Byron, Walter Perry and Milton Ross are in the cast. J. G. Hawks, the author, is to be highly complimented for the skill shown in the story's structure, as well as the originality of the whole.

Up to the beginning of the fourth reel the story occupies itself with the cleaning up of this crude, unlivable mining town by "Truthful," an honest and iron-hearted individual who settles there to run a newspaper. At this point begins a sub-plot, which, due to the author's skill, does not cause the slightest slump in the interest. This second plot has to do with one of the villains who has been banished from the town. This man has wronged the sister of a girl "Truthful" loves, and at the girl's bidding, "Truthful" does not hesitate to start after his man. He gets him after a sensational chase of the "Lim-ited" and brings him back to the town. "Truthful" has been laboring under the belief that it was the girl of his heart who has been mixed up in the secret love affair, but he is finally disillusioned, and as the sister and the captain are married, "Truthful" and his sweetheart exchange understanding glances.

We unhesitatingly recommend "Truthful Tulliver" as a "winner."

This picture will be shown at the Arcade theater for only one night—tonight.

# MARKET NEWS

Sugar—Cane or fruit \$8.10 sack, cash; \$8.50 30 days' time.

### Fruit.

- Cranberries, 20c quart.
- Bananas—10c a pound.
- Oranges—20@60c dozen.
- Lemons—30@40c.

### Vegetables, Miscellaneous.

- Brussel Sprouts—20c.
- Celery (California)—15c, 2 for 25c.
- Lettuce—15c; 2 for 25c.
- Potatoes—3 1-2c lb; \$3.00 a 100 lbs.
- Cauliflower—15c, 20c, 25c.
- New cabbage—8c.
- Honey—20c.
- Parsley—5c a bunch.
- Dry Onions—8c.
- Beans—White, 15c.
- Beans—Colored, 12 1-2c.

### Butter and Eggs.

- Butter—Fancy creamery, 50c lb.; \$1 for 2 lb. roll.
- Ranch Butter—45c lb.; 85c 2-lb roll.
- Eggs—45c.

### Flour and Feed.

- Bluestem Flour—\$2.25.
- Royal Patent—\$2.20.
- Jersey Cream—\$2.20.
- Best of the Best (patent)—\$2.15.
- Invincible—\$2.20.
- Snowdrift—\$2.40.
- Upper Crust—\$2.40.
- None-to-Equal—\$2.10.
- Gold Medal—\$2.95.
- Sea Foam—\$2.15.
- Snow Drop—\$2.15.

### Flour in 10-lb. Sacks.

- Graham, Gems, Whole Wheat and Royal Patent, 55c.
- Rye—65c.
- Yellow corn meal—45c.

### Chickens and Fowl.

- Ducks—Live, 17c.
- Turkeys—Live, 22c.
- Geese—Live, 15c.
- Hens—Live, 15c.
- Spring Chicken—18c.

### Cattle.

- Best heavy beef steers... \$8.35@8.40
- Best light beef steers... 7.85@8.35
- Best beef cows... 7.00@8.00
- Best heifers... 7.00@8.00
- Ordinary to good cows... 6.00@6.50
- Heavy bulls... 5.00@5.50
- Light bulls... 4.00@4.50
- Calves... 7.00@8.00
- Stocker feeder steers... 5.00@6.00

### Hogs.

- Stocker feeder cows... 5.00@6.00
- Heavy packing... \$10.50@11.00
- Heavy butchers... 9.25@10.25
- Light... 9.10@9.60
- Rough, heavy... 8.25@9.35
- Pigs... 8.50

Watch for Our Ad in Pay-Up-Week Edition Saturday 17th.

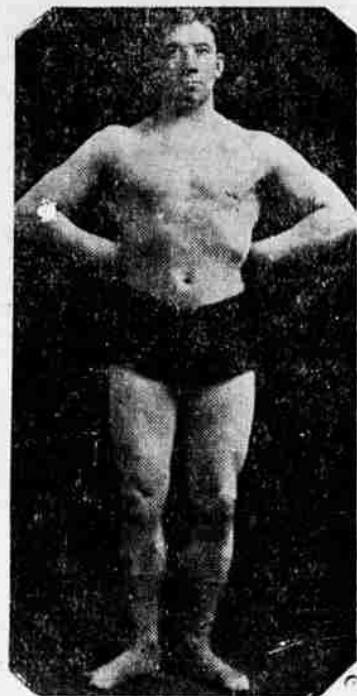
# It Will Save You DOLLARS

## Harris Grocery

PHONE MAIN 70 FARMERS PHONE B. 192  
408 North Fir St. Cross The Track

# TERRIBLE SWEDE

Will Meet Local Wrestler at The Arcade



I. A. JOHNSON

### Sheep.

- Best east of mountain lambs... \$11.50
- Best valley lambs... 9.75@10.00
- Wethers... 8.00@8.25
- Ewes... 7.00@7.25
- Goats... 3.25

## 'You Pay Me and Then I Can Pay You'

The thing that strikes every man when he sits down to consider it is how inter-dependent we are upon each other.

No one class can gain at the expense of all the other classes. This is a fact that has been strikingly emphasized during the mighty war in Europe. There every nation has found it necessary to run every activity hav-

SHERRY'S SATURDAY ONLY



In a Return Engagement of "THE FLOOR-WALKER"

ing even the remotest connection on a highly efficient basis.

In our own country, the factories could not run without markets for their goods, and if the factories didn't run, the farmer couldn't make money for there would be no market for his surplus product. As the farmer prospers, the entire nation prospers. So, too, as the commercial interests of the country prosper, the farmer prospers.

After all, we look to each other for our living and if we can throw into the channels of business the millions of dollars we all owe each other, so that we can again use these dollars to buy more things we need, every man who is supplying a real need will prosper.

This is the object of NATIONAL PAY UP WEEK, February 19 to 24. You can help and you can be helped if you will participate in the Pay Up Week campaign. Every business man in our city has pledged himself to pay all of his bills that he can at this time. Now let's all work together. Let's pass prosperity around.

Don't make any mistake in the plan. The idea isn't that you must pay me, but the idea is that we will all pay each other. If we all take it upon ourselves to start the ball rolling, we can.

Pride goeth before destruction.

Quiet conscience gives quiet sleep.

One hour today is two tomorrow.

# ELECTRIC SUPPLY CO.

AUSTIN BROWNELL, Manager

## HOUSE WIRING A SPECIALTY

Supplies and Heating Devices

Phone Main 726

Sommer Hotel Building, next to Western Union



### QUICK DELIVERIES

are a feature of this lumber business. When you give us an order you can confidently rely on getting your lumber a little before you need it. That means no delay in construction, no waiting time that you have to pay for. Think that over.

# GEO. PALMER LUMBER COMPANY

Retail Dept. Phone Main 8