

### BUD BRIGHT'S BRAINSTORMS



It's all right to build air castles, but keep your foundation in the ground.

### Work Shoes

What one wants in working shoes is comfort and durability. That is what we have looked for in selecting our stock of this class of goods.

These shoes do not gall or callose the feet, they "Stand the Racket," and they last.

Make your work easier by wearing our work shoes.

They fit any kind of weather, any time, any where.

### HILL'S Department Store

#### UNSHAKEN TESTIMONY.

Time is the test of truth. And Doan's Kidney Pills have stood the test in La Grande. No La Grande resident who suffers backache, or annoying urinary ills can remain unconvinced by this twice-told testimony.

Ed L. Bussey, La Grande, says: "I had been subject to kidney trouble at times, especially when a cold settled on me. Dull pains annoyed me and my kidneys got badly out of order. About three years ago I began using Doan's Kidney Pills and from that time on, I have had something on which I can rely. Whenever bothered, it has taken Doan's Kidney Pills only a short time to set me right. I am perfectly free from kidney trouble now." (Statement given November 20, 1912.)

On May 25, 1916, Mr. Bussey said: "I am ready to back every word of my former statement, regarding my experience with Doan's Kidney Pills, for I know they have no equal. Whenever I notice my kidneys getting out of fix, I take Doan's Kidney Pills and they never fail to do the work."

50c at all dealers. Foster-Milburn Co., Mfgs., Buffalo, N. Y.

#### Money to Loan

Have \$50,000.00 @ 7 per cent in amounts from \$2500.00 up, to loan on Grande Ronde Valley Farms.

Have \$50,000.00 @ 8 per cent in amounts from \$1000.00 up, to loan on farms in Union County.

\$ 250.00 @ 10 Per Cent  
\$ 500.00 @ 10 Per Cent  
\$ 700.00 @ 10 Per Cent  
\$1,500.00 @ 8 Per Cent

To loan on Improved City Property.

Also an unlimited amount of capital to loan on La Grande property on monthly repayment plan—Building loans a specialty.

W. B. SARGENT, President.

LA GRANDE INVESTMENT COMPANY  
LA GRANDE, ORE.

BUTTER LABELS—For sale at The Observer office.

### SHERRY'S

SHERRY'S TODAY ONLY

"The Return of Eve," Produced by Essanay in Five Acts; Lee Wilson Dodd, Author; Arthur Berthlet, Director.

Eve ..... Edna Mayo  
Adam ..... Eugene O'Brien  
David Winters ..... Edward Mawson  
Seymour Purchwell ..... Edward Arnold  
Mrs. Tupper-Bellamy ..... Emily Fitzroy  
Clarice Bellamy ..... Leona Ball  
John Raymond ..... John Cossar  
Trixie Shevlin ..... Renne Clemons

A splendid flow of action, excellent characterizations by a capable cast, beautiful backgrounds and unusual photography all combine to make Essanay's "The Return of Eve" one of the most desirable feature offerings of months. It is released through the V. L. S. E.

President George K. Spoor of Essanay offers it as a perfectly balanced photoplay, one possessing all the components of the ideal 5-act piece, and one in which intense care has been observed in each department of construction. The artistry of writer, director and actors has been matched by the skill of technicians and a smooth quality of excellence rules the entire play.

With nothing more to commend it than beauty of photography and backgrounds it would still be a satisfying picture. But not only does it possess these things, but carries an interesting plot as well executed by a strong cast.

Edna Mayo, in the featured role of Eve, finds in Lee Wilson Dodd's delightful story a part which is exactly suited to her talents. Eugene O'Brien, of stage fame, leads the supporting cast which is made up of well-known players of stage and screen, including Edward Mawson, Edward Arnold and Emily Fitzroy, Arthur Berthlet, who directed "Sherlock Holmes," "The Misleading Lady" and "The Havoc," produced this picture.

SHERRY'S—SATURDAY ONLY



EDNA MAYO in "The Return of Eve"

#### AT SHERRY'S.

"The Stolen Triumph," a Metro production, with Julius Steger, as star, which will be seen at the Sherry theater here on Sunday shows a play within a play. Several scenes in the production were taken at the Century theater in New York, which is one of the most beautiful playhouses in the world. The auditorium, stage and stage door of the actual theater were used as backgrounds in the different scenes.

This remarkable production deals with a poverty-stricken man of genius who brought his masterpiece to his supposed friend, a theatrical manager, who stole it and presented it as his own work. At the premiere of this play within a play, which is shown in several very unusual scenes, the real author of the drama recognizes the production as his own, denounces the impostor and is thrown from the theater.



SCENE FROM "THE STOLEN TRIUMPH"

## The Man Who

SELLS FOOD SHOULD BE RESPONSIBLE FOR THE PUBLIC HEALTH. THE DOCTOR IS ONLY A REPAIR MAN. THE REAL BUILDER IS THE PURVEYOR OF FOOD.

WHY NOT REACH FOR YOUR TELEPHONE NOW AND GET IN TOUCH WITH US, OR BETTER STILL, FILL YOUR LUNGS WITH SOME OF THAT INVIGORATING FEBRUARY AIR AND WALK OVER, THAT WILL GIVE US A CHANCE TO EXPLAIN WHY THIS STORE OFFERS A SERVICE THAT REALLY SERVES.

### Harris Grocery

PHONE MAIN 70 FARMERS PHONE B. 192  
408 North Fir St. Cross The Track

### ELECTRIC SUPPLY CO.

AUSTIN BROWNELL, Manager

HOUSE WIRING A SPECIALTY

Supplies and Heating Devices

Phone Main 726

Sommer Hotel Building, next to Western Union

### ARCADE

"GRETCHEN THE GREENHORN"

Dorothy Gish Is Dutch Girl in Triangle-Fine Arts Release—Reviewed by Thomas C. Kennedy in Motography.

Picturegoers cannot complain that picturesque Holland is at all remiss in the matter of giving them occasion to see their favorite screen actresses in characters such as will give opportunity for the display of innocent charm with all the beautifying qualities of quaintness, enthusiasm born of a healthy state of both mind and body, sympathy, self sacrifice and all the other virtues calculated to endear their possessor to all who have the good fortune to see her upon the screen.

"Gretchen the Greenhorn" is Dorothy Gish's latest starring medium which will be shown at the Arcade theater, Sunday, and whatever it may lack in depth of theme or originality of treatment is compensated for by this dainty and engaging little actress. Gretchen is from Holland but she is not here long before the Fatherland ceases to be anything but a pleasant memory. She lives with her father in the downtown district of an American city.

Gretchen's beau is named Pietro and as one of the titles states, "He courts her with her native songs rendered in English with an Italian accent." The family upstairs is a large one and on many occasions Gretchen comes to the rescue with bread and cake when the family cupboard fails to provide enough to go around. Her father is an engraver and in his simplicity becomes the tool of a counterfeiter. The villain kidnaps both the engraver and his sweet daughter but Pietro enlists the aid of the police and all ends happily.

Bernard McConville is the author of the play and the production of it was in the hands of C. M. and S. A. Franklin. There is charm to this offering even though there is little to grow enthusiastic over after Dorothy Gish has been excluded from the calculations. We see America as a melting-pot in the scenes depicting life in the neighborhood of Gretchen's abode. Japanese, Italian, Irish and Germans, as well as representatives of other nations are seen in the pictures.

Ralph Lewis is John Van Houck, Gretchen's father, and he is effective in the part. The only trouble with Van is his persistence in wearing spectacle-frames which are void of the optical glasses for which they were built. Frank Bennett as Pietro shows that practice makes for improvement. He is by far a better actor than he was six, even three months ago. Eugene Palette, Kate Bruce and the Fine Arts children are in the cast.

AT ARCADE THEATER SUNDAY



DOROTHY GISH AND RALPH LEWIS IN NEW TRIANGLE PLAY, "GRETCHEN, THE GREENHORN."

#### Mary Pickford Next Week.

The Massachusetts coast at Marblehead was selected for the staging of exterior scenes of "The Pride of the Clan," the new Scotch picture in which Mary Pickford will be presented by Artercraft at the Arcade theater Tuesday and Wednesday.

On the rocky Marblehead shores Mary Pickford and the members of her company lived for several months making the new picture under the direction of Maurice Tourneur, the famous French producer whose picture work in this country ranks as the most artistic of the screen. In one of the incidents of the story Mary Pickford appears on a half sunken fishing boat and in this scene she was forced to enact bits of realism that proved distinctly real and which the camera has faithfully recorded. The craft, very rickety and water soaked veteran, sprung a leak just as the important part of the scene was being filmed. It was only after considerable difficulty that Director Tourneur rescued the famous star from the dashing waves.

Several other scenes about the old bulk were staged later during the chilly mornings of November and resulted in Miss Pickford getting several severe wettings. It will never be shown in the picture but there was no hiding behind one of the high rock cliffs a small electric launch in which was Miss Pickford's maid and several changes of dry clothing for many changes were needed. Perhaps this ought not to be told and may break into the illusion but the truth will come out even in a newspaper story about a motion picture production.

### Meritol

TRADE MARK

PILE REMEDY

is a scientifically prepared medicated paste in tubes for proper use; also tablets for internal use in same package. A remedy which you can use yourself. Sold on its merits. Ask us. Sold only by us, 50c and \$1.00.

LEVY-VOGEL DRUG CO.

La Grande, Ore.

When in Portland you will find The Observer on sale at the Oregon Hotel news stand and Imperial Hotel.

## Patriotic Music at Its Best

Afire with the pride and spirit of the nation, played and sung with a martial vigor that makes the echoes ring, the patriotic selections on

### COLUMBIA DOUBLE DISC Records

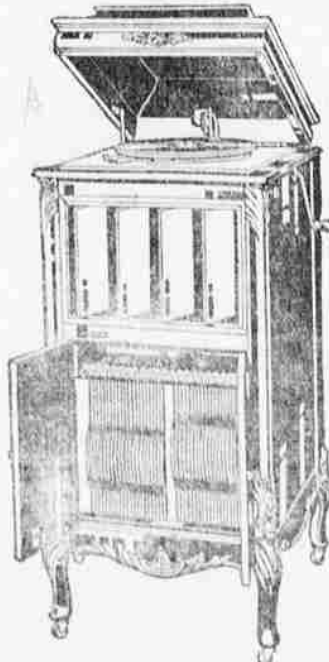
Will awaken a responsive thrill in the heart of every real American

Come in and let us play some patriotic records for you and you will know how truly inspiring our country's songs can be.

SEE OUR WINDOW

## W. H. Bohnenkamp Co.

GRAFONOLA \$110.00 EASY TERMS



A Band Made up of Soldiers From Trenches  
New York, Feb. 8—(United Press)—A band, every one of whose members has recently been wounded and is on furlough from the French trenches on the western front, has been organized and will tour the United States soon, Percy Weadon announced today. The band has among its members some of the headliners from the Opera Comique and the Conservatoire, and several well known composers under the direction of M. Koche of the Conservatoire.

Wedding invitations, announcements and calling cards printed at the Observer Job Printing Department. 10-28-17