

We extend to you all, best wishes for a

Merry Christmas

And a Happy and Prosperous

New Year

HILL'S DEPARTMENT STORE

A. T. HILL

W. S. PARKER

V. J. BOLTON

SHERRY'S

Strong Cast Support Bushman and Bayne in "In the Diplomatic Service." "In the Diplomatic Service," with Francis X. Bushman and Beverly Bayne, the crowned king and queen of motion pictures in the stellar roles, will be the big feature attraction at the Sherry theatre on Sunday and Monday. This is a Metro wonder-play, in five gripping parts, and it was produced under the personal direction of Mr. Bushman. As a result, admirers of Mr. Bushman are afforded the rare opportunity of seeing this star in a production that represents his own ideas and ideals.

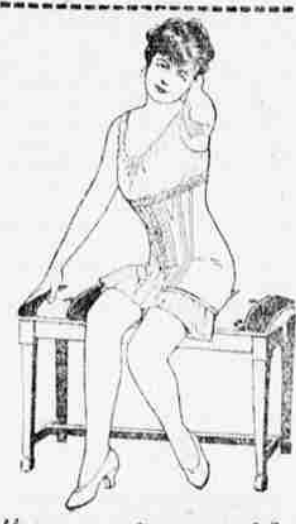
Mr. Bushman also made the screen adaptation from a short story, so it can really be called a Bushman feature in every particular. The supporting cast is one of the best ever assembled to appear with these two well-known stars, and it includes Helen Dunbar, Henry Bergman, one of the best dramatic actors of the stage or screen; William Davidson, a national favorite; Edmund Elton, Harry D. Blakemore, the famous old minstrel; Belle Bruce, Mrs. La Roche, Liza Miller and Charles Fang. Fang is a Chinese comedian and was recently styled, by New York critics, "the Chinese Charley Chaplin." Fang, Blakemore and Liza Miller furnish the comedy in the story, which forms excellent relief for the strong dramatic situations.



SCENE FROM "IN THE DIPLOMATIC SERVICE" SHERRY'S MONDAY AND TUESDAY.



Sherry's Today Only.



La Camille

Reg. Trade Mark, U. S. Pat. 525,000.
—is greater value than any other corset, dollar for dollar, in charm of style, in perfect fit and beautiful finish. Besides all this it is the only front-lace corset with the wonderful exclusive feature, the

Ventilo BACK

When in need of a new corset have a trial fitting in a La Camille. You will be convinced of its supremacy. The different models always on hand.
Priced at \$2.00 Up
Eleven years experience in fitting Front-Lace Corsets.
MRS. ROBT. PATTISON
Corsetiere
Phone Red 3221 Res. 1702 Oak

The following list of films was clipped from the January number of the Woman's Home Companion. All of these films marked with a star have been or will be shown at the Arcade Theatre:

The Crisis—
Selig, 10 reels: An especially fine production following closely Winston Churchill's novel of the Civil War, with Abraham Lincoln as the dominating character.

Less Than The Dust—
Artercraft, 7 reels: The first of Mary Pickford's new productions, featuring her in an entirely new and winsome role.

Somewhere in France—
Ince-Triangle, 5 reels: An excellent picture based upon Richard Harding Davis's novel. The secret side of war is emphasized rather than the spectacular.

American Aristocracy—
Fine Arts-Triangle, 5 reels: Another fine Douglas Fairbanks picture, clean, interesting and thoroughly enjoyable.

Seventeen—
Famous Players-Paramount, 5 reels: A good laugh at the expense of love's young dream is in this picture based on Booth Tarkington's story.

Witchcraft—
Lasky-Paramount, 5 reels: An unusually good picture, carefully produced, based on the Salem witchcraft tales.

The Intrigue—
Dallas-Paramount, 5 reels: A different twist is given to the usual story of the beautiful spy who comes to America to foil the plotters and falls

MONEY TO LOAN

Private money to loan on city or farm property. Reasonable Rates.
Fire Insurance & Real Estate

Phone Black 2171

Henry T. Hill

Room 23 West Jacobson Bldg.

ARCADE

"THE LITTLE SCHOOL MA'AM."
Dorothy Gish and Fine Arts Children in Triangle Picture.

(Reviewed by Thomas C. Kennedy.)
The trials and tribulations of the "little old red school house" are set forth in "The Little School Ma'am," which was produced at the Fine Arts studio under the direction of C. M. and S. A. Franklin. It will be shown at the Arcade Sunday.

Dorothy Gish is the school teacher and this little Nan who comes from Virginia is much more interesting than any of her persecutors, the narrow small characterized people of the Western town, and all their harsh treatment. Nan is a pretty, wistful little girl and the charming pictures composed by the directors, who always choose the most delightful locations and procure splendid photography, unite with the appeal of this character to make "The Little School Ma'am" a picture of considerable appeal.

As a pleasing, prominent feature of this offering, the Fine Arts children are second to no other phase of "The Little School Ma'am." These children enact an amateur theatrical entertainment which is delightfully amusing. They also are to the front in other portions of the play and the scenes they appear in, while having little to do with the play itself, add atmosphere and they are good enough to rise above their real status, which is padding. The Franklins and the Fine Arts children are a rare combination for filling out a slim story, though, of course, in this respect most of the credit must go to the Franklins.

The story concerns itself with the school teacher's unequal struggle to keep her position at the school, whose management is in the hands of prejudiced town officials. Nan is from Virginia and for that reason she and the visiting novelist, who is also from Virginia, are drawn together by a common bond. She goes driving with the young man one evening and an accident causes them to remain out until daylight. This is grounds for her discharge, but it turns out to be no calamity because the gentleman from Virginia marries her.

Eimer Clifton, George Pierce, Howard Gaye, Josephine Crowell and Millard Webb are in the cast. The photography is excellent and it reveals backgrounds that for sheer beauty are superlative, and these beautiful pictures give the offering distinct charm.

One Model

No style for old folks, we confess, Today are seen.
And all the ladies have to dress Like sweet sixteen.
—Kansas City Journal.

in love with an American inventor.

Prudence The Pirate—
Thanhouser-Pathé, 5 reels: A jolly picture, entertaining and full of new situations. Gladys Hulette is a charming heroine.

A Sister of Six—
Fine Arts-Triangle, 5 reels: More of the delightful scenes of quaint Bessie Love and the six remarkable children, and less raiding and gunfire, would have made this entertaining picture of Western life more attractive.

Her Father's Son—
Moresco-Paramount, 5 reels: An impossible, sentimental story, but with many attractive scenes, features Vivian Martin as a boy hero before the war.

Old Folks At Home—
Fine Arts-Triangle, 5 reels: A realistic story featuring Sir Herbert Tree as the farmer senator who defies the law to protect his beloved son from punishment for murder. Not the ethics of the story but the acting and the plot are recommended.

The Return of Eve—
Kleine, Edison, Selig, Essanay, 5 reels: An exaggerated story, with some interesting scenes, of two children brought up in ignorance of the world, who are unable to adjust themselves to society.

A Corner in Colleen—
Ince-Triangle, 5 reels: A rollicking, merry comedy with Bessie Barriscale the hoyden of four tomboy sisters in an Irish village.

The Heart of the Hero—
World, 6 reels: Robert Warwick makes an ideal Nathan Hale in the tragic love story of the Revolutionary hero. The story drags at first and can be cut.

A Romance of Billy-Goat Hill—
Red Feather, 4 reels: A fair interpretation of Alice Hegan Rice's story of the tragedy in young lives due to misunderstanding and lies.

Dulcie's Adventure—
American-Mutual Masterpiece, 5 reels: Mary Miles Minter's winsome, youthful charms save a mediocre story, poorly cast, and badly directed.

In the Diplomatic Service—
Metro, 4 reels: A fairly good story with an unexpected twist works up good suspense with an aimless hero, a seductive heroine, a crafty secret agent of a foreign power and an invention. The story is clean and interesting.

To Our Friends and Patrons

MERRY CHRISTMAS

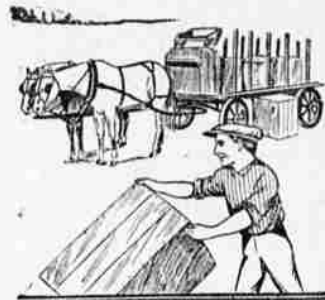
And a Happy & Prosperous New Year to you from Beginning to End.

Harris Grocery

PHONE MAIN 70 FARMERS PHONE B. 192
408 North Fir Street, Cross Track

HOW MANY TONS AND WHAT SIZE

shall we include in your coal supply? Our yards are full of the highest grades of clean coal, but deliveries are being made rapidly and while we are at it, we would like to accommodate you with our best coal. Shall we send you a ton or so?



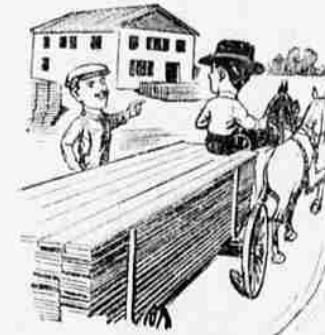
LET US HANDLE YOUR TRANSFER WORK

and it will be done carefully and promptly. We have ample facilities for handling large quantities of goods and employ none but experienced, careful men. We shall be glad to call and talk about your work and to refer you to others whose trucking we do.

HIAWATHA, KING and ROCK SPRINGS COAL
CHAIN WOOD, CORD WOOD, FEED, TRANSFER, STORAGE

THE J. D. LYNCH CO.

Jefferson Ave., One Block East of Depot
Fone Main 10

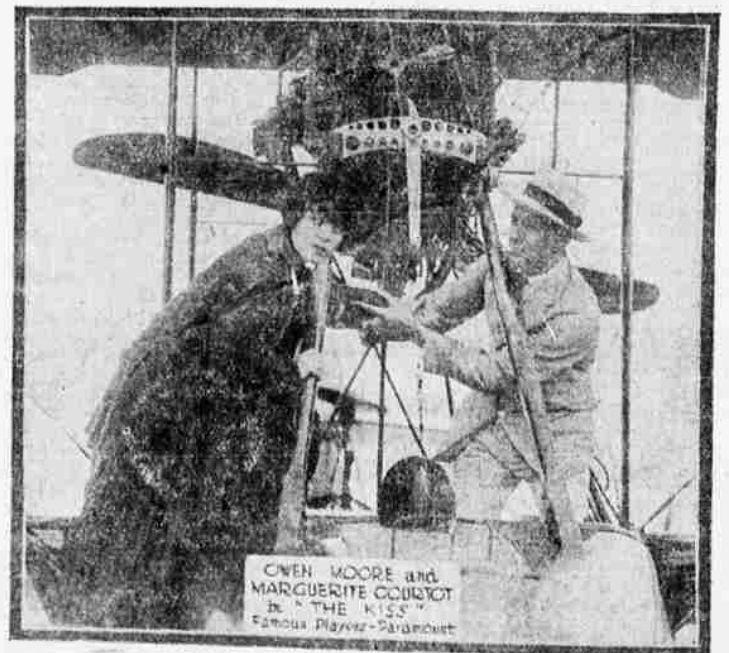


QUICK DELIVERIES

are a feature of this lumber business. When you give us an order you can confidently rely on getting your lumber a little before you need it. That means no delay in construction, no waiting time that you have to pay for. Think that over.

GEO. PALMER LUMBER COMPANY

Retail Dept. Phone Main 8



"THE KISS," AT THE ARCADE ON MONDAY AND TUESDAY

The aeroplane and the kiss vie with each other as the center of attraction in the Famous Players-Paramount picture "The Kiss" in which Owen Moore (Mary Pickford's husband) and Marguerite Courtot are co-starring at the Arcade Monday and Tuesday. The picture was directed by Del Henderson. Both stars indulge in the dangerous pastime of flitting through space and in the equally dangerous pastime of osculation. Both of these little incidents lead to very interesting episodes—the one to a big thrill and the other to a succession of delightfully amusing situations.

Three Exceptional Good Buys

Six-room house, basement, bath, toilet, wired. Lot 60 x 114, screened porch. House in good repair, sewer paid for. All for \$1000 and easy payments. Located on E. Washington Ave.

Seven-room house on Sixth St., in splendid condition, good basement, plastered, side walk, sewer and street improvements all paid, nice lawn and shade trees. The price is \$2500 on this property, there must be a payment of \$1000 the balance can be arranged either in monthly payments or otherwise.

Improved Small Farm

Within one mile of the Union high school, a well improved 60-acre farm, splendid water rights, alfalfa and everything needed. The land is all good and the price is attractive.

Geo. H. Currey

Opposite Y. M. C. A. Phone Black 2001

HE WHO MOVES REAL ESTATE

106 Elm Street La Grande, Oregon

FILMS FOR THE FAMILY GROUP.

Much has been said and done regarding better films that will please all of the members of the family. A number of towns have inaugurated what is known as the family film

day at the movies. The films shown on these days are picked, not from an educational standpoint alone, but with the idea that any or all members of the family can attend and will see films that are clean, entertaining, and educational.