

Shoes for Dress, Shoes for Business, Shoes for all Occasions



Of correct and shapely styles of the best leathers, carefully made by the best makers. That's what we have for you, gentlemen, in footwear—if they were not just so, rest assured we wouldn't say so.

- Men's Dress and Semi-Dress Shoes, Button and Lace, Patent Leather, Vici, Gun Metal and Tan\$2.75 to \$5.50
- Dr. Reed's, health shoe with cushion inner sole and best grade Vici \$6.00
- Men's Muleskin Work Shoes, heavy elk sole \$1.87
- Men's Muleskin Work Shoes, heavy oak sole \$1.50
- Men's Heavy Black and Tan Work Shoes, welted and pegged and sewed sole, high and low top \$2.25 to \$9.50

BOYS' WORK AND DRESS SHOES

Patent, Gun Metal and Tan, Button and Lace\$1.79 to \$3.29

LADIES—IT IS THE SHOE THAT PRODUCES THE BEAUTY—NOT THE FOOT

Dorothy Dodd is the Shoe

that produces style, beauty and comfort. If you desire a graceful, easy, good-wearing shoe, this is the shoe to get. We are featuring these this year, therefore, we do not hesitate to assert our supremacy. Let us show you a pair of these and you will be convinced.

- Ladies' Dorothy Dodd, Kid, Gun Metal and Patent, Lace and Button Shoes\$3.50 to \$5.00
- Ladies' Dorothy Dodd Button Shoes, Patent with Grey Upper\$6.00
- Ladies' Dorothy Dodd Lace Shoes, Brown with Champagne upper \$6.00
- Advance Fall Styles.
- Other makes Ladies' and Misses' Shoes, Patent, Kid, Gun Metal and Tan\$1.75 to \$4.00

Hill's Department Store

Undoubtedly the Place to Trade At

ARCADE

Great Show at Arcade Tonight. "Holl's Hinges," the great Triangle Western production featuring W. S. Hart, met with universal approval last night. The verdict of the crowd of patrons of the Arcade that witnessed this film was that without a doubt this is one of the most powerful and exciting films seen for many a day. It is full of punch from start to finish, interspersed with pathos that keeps the interest up and one's nerves tingling.

La Grande picture film should not fail to see this masterpiece which is shown for the last time tonight. It is one of the best Triangle has produced.

Blanche Sweet Coming. In all of her previous Lasky productions, Blanche Sweet has had husbands thrust upon her. She has been pursued by hundreds of admirers, and had many at her feet, but in her forthcoming production, "The Thousand Dollar Husband," which will be seen at the Arcade on Friday and Saturday she buys a husband, and strange as it may seem, the purchased does not welcome the sale. In this production, Miss Sweet is first seen as a Swedish maid of all work in a college boarding house. She is madly in love with one of the students and when she suddenly becomes wealthy, and the young man faces

ruin, she offers to pay his debts if he will marry her. How the wealthy bride of the loveless marriage is set upon by a band of crooks, and how she is eventually saved and wins the love of her husband, goes to make one of the most unusual photodramas ever presented. The Jesse L. Lasky company has surrounded Miss Sweet with a cast of unusual excellence including Theodore Roberts, Tom Franman, Jane Wolff, Horace B. Carpenter, Lucile La Varney and others.

HAWAIIANS COMING.

Arcade Leased by Popular Group of Hawaiian Singers and Musicians

Tom J. Culligan of the Western Show Print company of Seattle, sole owner of the Culligan Attractions has leased the Arcade theatre from Meyers & Leiter for Monday evening, Aug. 14th. On that even he will offer the Famous Hells Hawaiians as the first attraction to be seen at this popular picture theatre. This offering does not come under the head of vaudeville but is what is called a high class concert performance. If this innovation proves successful Mr. Culligan will present a series of concerts at the Arcade during the winter months.

Wool Brings 40 Cents.

The Portland Warehouse company has purchased 40,000 of Lane county wool, the price, though not announced, is understood to be 40 cents a pound.

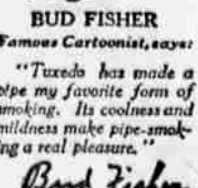
LEIGHTON'S GARAGE

La Grande, Oregon.

The Garage of Satisfactory Service



Bud Fisher jumped the old-time rut when he invented Jeff and Mutt. For years, with that amusing pair, he's chased away the people's care, and made them laugh and throw their hats, and cackle till they broke their slats. The tired, the sad, the weak, the worn, have laughed with Bud, and ceased to mourn; the lame, the halt, the blind, the deaf, have whooped with glee o'er Mutt and Jeff. Where does he find the joyous jests which break the buttons from our vests? You'd think the fount would have to fail, but never once has he been stale. When he sits down to hatch a plot in which his heroes will be caught, he lights his pipe, and soon a joke emerges from Tuxedo smoke. He swears by "Tux" and so will you, when you have tried a jar or two.



BUD FISHER
Famous Cartoonist, says:
"Tuxedo has made a pipe my favorite form of smoking. Its coolness and mildness make pipe-smoking a real pleasure."
Bud Fisher

FLOUR GOING UP RAPIDLY

LOCAL BRANDS BOOSTED 20 CENTS PER BARREL

Sugar Drops 10 Cents, Second Movement of the Sort in a Week.

Once more sugar has gone down and flour up. Local brands of flour boosted 20 cents this forenoon on barrel quotations. Outside brands remain as yesterday but if the increase in wheat prices continues, it is fore-ordained that all brands of flour will soon go up.

The drop on sugar was rather expected, being forecasted at the time sugar took a substantial drop early in the week.

FRUIT

- Strawberries—Hood River, 2 boxes 25c
- Blackcaps—2 boxes 25c.
- Peaches—15c lb; 2@25c.
- Watermelons—3 1-2c lb.
- Currants—Gallon, 40c.
- Raspberries—10c.
- Home-grown Gooseberries—30c.
- Strawberries—Hood River, Milton, 15.
- Willamette berries 2 for 25.
- Bananas—35c and 40c dozen.
- Cocoanuts—15c each.
- Oranges—50c and 60c.
- Lemons—40c.
- Royal Anne Cherries—10c lb.
- Cantaloupe—10c; 4@25c.

VEGETABLES AND MISCELLANEOUS

- Green corn, per dozen—30c.
- Cauliflower (home grown)—20c.
- String Beans—10c lb.
- Green Peas—10c; 3 lbs for 25c.
- New Cabbage—5c lb.
- New Potatoes—3 cts lb.
- Fresh Tomatoes—California 2@25.
- Radishes—5c and 3 @ 10c.
- Green Onions—5c per bunch, 3 for 10c.
- Honey—20c; 3 for 50c.
- Parsley—5c a bunch.
- Onions—6c lb.
- Beans—White, 2@25; Lima, 12 1-2.
- Sugar—Cane or fruit, \$8.45 sack, cash \$8.95 30 days' time.

BUTTER AND EGGS

- Butter—Fancy creamery 35c lb. roll and 65c 2lb roll.
- Ranch Butter—2lb roll 55c and 60c
- Eggs—Strictly fresh 30c.

CHICKENS AND FOWL

- Hens—20c retail, dressed.
- FLOUR, HAY, FEED, EAC.
- Bluestem Flour—\$1.50.
- Best of the Best (straight grade) \$1.30.
- Invincible—\$1.45.
- Best of the Best (patent)—\$1.40
- \$1.35.

- Snowdrift Flour—\$1.60
- Upper Crust—\$1.60.
- None-to-Equal—\$1.45.
- Occident—\$2.40
- Gold Medal—\$2.75.
- Sea Foam—\$1.30.
- Snow Drop—\$1.45.

CATTLE.

- (La Grande Prices.)
- Prime light steers 6.00@6.15
- Prime heavy steers 6.20@6.25
- Good light steers 5.00@5.25
- Stockers and feeders 4.00@4.75
- Prime dehorned cows 4.15@4.25
- Common cows 2.00@3.00
- Bulls 2.50@3.50
- Prime light veal calves 6.00@6.50
- Prime heavy veal calves 3.00@5.00

Sheep.

- Select Spring lambs 7.00@7.25
- Best yearlings 5.00
- Good to common ewes 3.00@3.50

Hogs.

- Choice light weights 8.75
- Medium weights 8.10
- Good light weights 8.50@8.60
- Rough and heavy 7.70@8.00

SHERRY'S

Paris Slums Seen in Motion Picture. The scenes of the Paris slums in the William Fox production, "The Spider and the Fly," are exact duplicates of certain spots in the poorest quarter of Paris. J. Gordon Edwards, director of the picture, was in Paris a few years ago. Among other places, he visited the Paris slums. He was so impressed with their filth and squalor that he decided to show them on the screen if the time ever came in which such scenes could be used.

When Mr. Edwards read "The Spider and the Fly," which was written by Franklin B. Coates, he decided at once that in the scenes of the French capital he could make use of settings showing the slums. He dug out an old notebook in which he had jotted down his impressions, and, refreshing his memory, began work on the settings. The picture is at Sherry's today and tomorrow.

SCREEN GOSSIP

Charley Chaplin copied his famous walk from a derelict in London who actually walked that way and held the horses for the cab drivers at a public house in the part of the city where Chaplin was raised. As a boy Chaplin's mother gave him many scoldings for imitating the poor old fellow who was largely responsible in laying the foundation of an annual income of \$670,000.

Charles Fang, an Americanized Chinese, who plays a character part in "The Quitter," a forthcoming Metro wonderplay, in which Lionel Barrymore is starred, objected to wearing a queue until he was told that he could not be used otherwise. He then consented to put-

ting on a pig-tail wig, but took it off the moment he was not working before the camera.

Police Guard Romeo

When Francis X. Bushman and Beverly Bayne were at work on the exterior scenes of "Romeo and Juliet," which were made in a mammoth outdoor set at the Brighton Beach race track, it was necessary to employ twenty special policemen to keep the crowds off the grounds. The track is near so many summer resorts, including Coney Island, that the players were annoyed by the immense crowds that fairly stampeded in upon the scene.

In the new William Farnam picture "Battle of Hearts", the first sea story presented by William Fox, some genuine oxen were needed for "local color" in the fishing village. The services of a California cowboy were required to move the lumbering animals on a boat and land them safely on the barren island where the scenes were taken.

Etha Hall, who is featured jointly with Robert Leonard, is one of the prettiest ingenues in the profession, and Gladys Rockwell, the leading lady, is famous for both her beauty and talents. Miss Hall makes a specialty of impersonating children's roles, boys or girls, and is a soubrette of splendid accomplishments, while Miss Rockwell is a beautiful type of statuesque and stately woman who are seen mostly as adventuresses in moving pictures as well as on the stage.

As the thirty-six-hour session drew to a close old Marcus Merriarity, the motion picture veteran of the civil war, who is seventy-two years old, hesitated as he took his hat to leave and asked, "Sure that's all you want today, Mr. Collins?"

Viola Dana can qualify as an endurance motion picture actress, when she is awake. In making her new Metro production, "The Flower of No Man's

FLOUR GOING HIGHER Buy Now

We Have Got 'Em All 14 Different Brands

We Specialize On SNOW DROP

The kind that made La Grande Housewives famous as Breadmakers

We have recently purchased three carloads of SNOW DROP Old Flour properly aged. We advise our customers to buy now. Special prices on barrel lots.

Harris Grocery

PHONE MAIN 70 FARMERS PHONE B. 192 408 North Fir Street, Cross Track

Land, it was necessary to keep the entire company busily working for thirty-six hours, and they had to stay up all night.

FOR OPEN INCOME RETURNS.

Senator Favors Having Them Made Public by Law.

Washington, July 14.—Senator Poindexter introduced in the Senate today an amendment to the pending Revenue bill to make all income tax returns public. He has talked with members of the sub-committee of the Finance committee, which is consider-

ing the income tax provisions of the revenue measure, and was assured by Senator Williams and others that his proposition would have serious consideration. Discussing the amendment, Senator Williams, chairman of the sub-committee, said:

"I never could see any sense in keeping income tax returns more secret than any other tax returns."

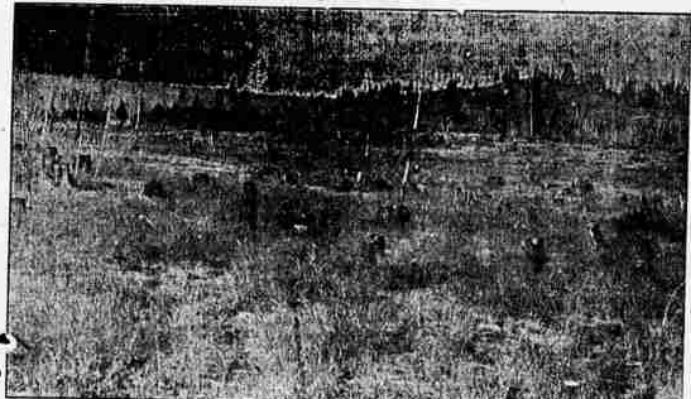
There is a strong sentiment among members of the Finance committee to make public the returns, but such a proposition would delay the passage of the Revenue bill. Senator Simmons, Chairman of the Finance committee, said that he had not given the Poindexter amendment any consideration.

"YOUNG MAN-GET LAND"

"Land Owners Are the Princes of the Earth" Your Best Land Opportunity To Make Good Is

PALMER LOGGED OVER LAND

\$15.00 PER ACRE, 1-10 PER YEAR, 6 PER CENT INTEREST



This Photograph illustrates the rolling character of the country, and shows the fine pasturage, the stumps, trees and occasional clear patches.

Why consider subjecting yourself to the hardships of homesteading, the "red tape" of "proving up", the handicaps of high altitude, frost, poor water, and untried soil and isolation from the conveniences of civilization, when you can get a tract of Palmer Lands at these terms and prices and live in a settled and proven community, within 3 to 5 miles of a railroad, where there is plenty of rain fall and good water, an ideal climate and unexcelled soil.

3,000 ACRES OF PALMER LAND

in tracts of 40 to 200 or more acres of as good or better land than any yet sold, well watered, averaging from 75 to 90 per cent fine tillable farming land and every foot first-class pasture, near abundance of outside range, within 3 to 5 miles of the railroad, Palmer Junction Postoffice and general merchandise store, etc., will likely be sold this summer and fall.

4000 acres have been sold; but this is less than 25 per cent of the entire tract and not over 40 per cent of the good farming land. Fall and Spring wheat, oats, barley and other grains, alfalfa, clover, timothy, Sudan grass, millet and other hays and grasses, corn, potatoes, peas, beans, squash, cabbage, berries, turnips, beets, and many other vegetables for feed and table purposes have been grown with excellent success. Dairying, stock, hog and poultry raising are now the back bone of this community and are rapidly developing. All this in the third agricultural year of Palmer Lands.

A FEW FACTS

- Palmer Lands won third prize at last year's fair.
- About 25 families are now living on their places.
- Nearly 1000 acres of new land is now in crops.
- A dozen new homes have been built this year.
- The roads are in good condition.
- The grass is still green and pasture excellent.
- Both public and Sunday schools are established.
- More land is being cleared and fences built.
- Every forty corner is located and staked.
- There is plenty of timber for wood, fencing, etc.
- The soil runs deep, even and is subirrigated.
- The altitude is 2600 feet, rainfall 30 inches.
- A new county bridge connects Palmer Junction with Cricket Flat, 60 more farmers will ship there.
- Many new families will settle here by next year.
- Rural mail route, telephone line and other such advantages are now being talked and planned.

Investigate at Once

Write for our new illustrated folder, or call and let us show you maps and photographs and samples of grains and grasses grown on Palmer Lands. George Huntington Currey will be pleased to go with you or meet you at Palmer Junction at any time.

Palmer Lands are the best new land offer in the west today. They are a real opportunity for a man with small resources and an ideal investment for a man with means.

This is an ideal time to look over these lands, while the crops are still in the field. If you are interested in good land at low cost do not put off your investigation. You have heard people tell of the chances they have missed. Don't miss yours. This land that is now selling for \$15 will demand \$100 in a very few years. Arrange your affairs to look at these lands at once.

Opposite Y.M.C.A 108 Elm St. Both Phones

Geo. H. Currey

He Who Moves REAL ESTATE La Grande, Ore.