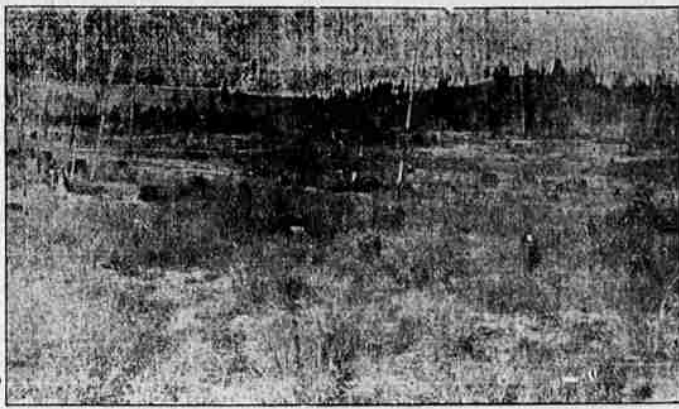


"YOUNG MAN-GET LAND"

"Land Owners Are the Princes of the Earth"
Your Best Land Opportunity To Make Good Is

PALMER LOGGED OVER LAND

\$15.00 PER ACRE, 1-10 PER YEAR, 6 PER CENT INTEREST



This Photograph illustrates the rolling character of the country, and shows the fine pasturage, the stumps, trees and occasional clear patches.

Why consider subjecting yourself to the hardships of homesteading, the "red tape" of "proving up", the handicaps of high altitude, frost, poor water, and untried soil and isolation from the conveniences of civilization, when you can get a tract of Palmer Lands at these terms and prices and live in a settled and proven community, within 3 to 5 miles of a railroad, where there is plenty of rain fall and good water, an ideal climate and unexcelled soil.

3,000 ACRES OF PALMER LAND

in tracts of 40 to 200 or more acres of as good or better land than any yet sold, well watered, averaging from 75 to 90 per cent fine tillable farming land and every foot first-class pasture, near abundance of outside range, within 3 to 5 miles of the railroad, Palmer Junction Postoffice and general merchandise store, etc., will likely be sold this summer and fall.

4000 acres have been sold; but this is less than 25 per cent of the entire tract and not over 40 per cent of the good farming land. Fall and Spring wheat, oats, barley and other grains, alfalfa, clover, timothy, Sudan grass, millet and other hays and grasses, corn, potatoes, peas, beans, squash, cabbage, berries, turnips, beats, and many other vegetables for feed and table purposes have been grown with excellent success. Dairying, stock, hog and poultry raising are now the back bone of this community and are rapidly developing. All this in the third agricultural year of Palmer Lands.

A FEW FACTS

Palmer Lands won third prize at last year's fair. About 25 families are now living on their places. Nearly 1000 acres of new land is now in crops. A dozen new homes have been built this year. The roads are in good condition. The grass is still green and pasture excellent. Both public and Sunday schools are established. More land is being cleared and fences built. Every forty corner is located and staked. There is plenty of timber for wood, fencing, etc. The soil runs deep, even and is subirrigated. The altitude is 2600 feet, rainfall 30 inches. A new county bridge connects Palmer Junction with Cricket Flat, 60 more farmers will ship there. Many new families will settle here by next year. Rural mail route, telephone line and other such advantages are now being talked and planned.

Investigate at Once

Write for our new illustrated folder, or call and let us show you maps and photographs and samples of grains and grasses grown on Palmer Lands. George Huntington Currey will be pleased to go with you or meet you at Palmer Junction at any time. Palmer Lands are the best new land offer in the west today. They are a real opportunity for a man with small resources and an ideal investment for a man with means. This is an ideal time to look over these lands, while the crops are still in the field. If you are interested in good land at low cost do not put off your investigation. You have heard people tell of the chances they have missed. Don't miss yours. This land that is now selling for \$15 will demand \$100 in a very few years. Arrange your affairs to look at these lands at once.

Opposite Y.M.C.A.
108 Elm St.
Both Phones

Geo. H. Currey

He Who Moves
REAL ESTATE
La Grande, Ore.

MARKETS ARE WELL SUPPLIED

GREEN CORN IS LATEST ITEM ON THE LIST.

Cove Loganberries Are Now Arriving in Fair Quantities.

This is the top of the season in local market supplies, there being available almost any and everything that could be desired for the table and for putting away for winter use. Green corn from the Willamette valley has appeared and the price is 30 cents per dozen. Cove loganberries are arriving in moderately fair quantities, the retail price being \$1.75 per crate.

Hogs Advance in Portland.

There was a further advance of a nickel in the price of hogs at North Portland during the early afternoon with sales up to \$9.35, or 30c above the figures of Saturday.

Cattle Run Is Heavy.

The movement of northwest grassers into the cattle market was extremely liberal over Sunday. Total North Portland arrivals for the first day of the week were 1514 head, compared with 831 last Monday, and 752 head this same day a year ago.

The market sagged fully 25c during the early trade.

General cattle market range:

FRUIT

Strawberries—Hood River, 2 boxes 25c
Blackcaps—2 boxes 25c.
Peaches—15c lb; 2@25c.
Watermelons—3 1-2c lb.
Currants—Gallon, 40c.
Raspberries—10c.
Home-grown Gooseberries—30c.
Strawberries—Hood River, Milton, 15. Willamette berries 2 for 25.
Bananas—35c and 40c dozen.
Cocoanuts—15c each.
Oranges—50c and 60c.
Lemons—40c.
Royal Anne Cherries—10c lb.
Cantaloupe—10c; 3@25c.

VEGETABLES AND MISCELLANEOUS

Green corn, per dozen—30c.
Cauliflower (home grown)—20c.
String Beans—10c lb.
Green Peas—10c; 3 lbs for 25c.
New Cabbage—5c lb.
New Potatoes—4c lb.
Fresh Tomatoes—California 2@25.
Radishes—5c and 3 @ 10c.
Green Onions—5c per bunch, 3 for 10c.
Honey—20c; 3 for 50c.
Parsley—5c a bunch.
Onions—6c lb.
Beans—White, 2@25; Lima, 12 1-2.
Sugar—Cane or fruit, \$8.85 sack, cash \$9.25 30 days' time.

BUTTER AND EGGS

Butter—Fancy creamery 35c lb. roll and 65c 2lb roll.
Ranch Butter—2lb roll 55c and 60c
Eggs—Strictly fresh 30c.

CHICKENS AND FOWL

Hens—20c retail, dressed.
FLOUR, HAY, FEED, EAC.
Bluestem Flour—\$1.40.
Best of the Best (straight grade) \$1.25.
Invincible—\$1.40.
Best of the Best (patent)—\$1.25, \$1.37.
Snowdrift Flour—\$1.50.
Upper Crust—\$1.50.
None-to-Equal—\$1.40.
Occident—\$2.40
Gold Medal—\$2.40
Sea Foam—\$1.25.
Snow Drop—\$1.40.

Cattle.

(La Grande Prices.)
Prime light steers 6.00@6.25
Prime heavy steers 6.50
Good light steers 5.00@5.25
Stockers and feeders 4.00@4.75
Prime dehorned cows 4.25@4.50
Common cows 2.00@3.00
Bulls 2.50@3.50
Prime light veal calves 6.00@6.50
Prime heavy veal calves 3.00@5.00

Women Headquarters For Hughes

New York, Aug. 1.—The Women's Roosevelt League opened headquarters in the Postal Life Building here today to help Charles E. Hughes get into the President's chair.

The officers of the league are:

Mrs. Theodore Roosevelt, jr., honorary president; Miss Alice Carpenter, Mrs. Evans R. Dick, Mrs. E. Tiffany Dyer, Mrs. Elon H. Hooker, Mrs. Leonard Thomas, Mrs. Michael Van Buren and Mrs. Antoinette Ead Woods, vice-president; Mrs. Joseph Griswold Deane, secretary, and Miss Vera De Costa Greene, treasurer.

Baker Plans Highway Signs.

Baker, Aug. 1.—Judge Messick stated yesterday that at the August term of county court, which convenes tomorrow, the matter of establishing sign posts on all county roads will be taken up. "We have been considering the purchase of metal signs for the county roads, to show distances and also to serve as a guide in directing tourists and those unfamiliar with the roads and where they lead. The main reason why we have not secured metal signs sooner is because none of the samples submitted have met with the approval of the court. Under an old state law, road supervisors are required to establish sign posts in their districts, and some have compiled,

some sections of the county being well provided for. Other supervisors have been remiss, but we intend to take action at once and it is probably safe to say that we will buy the signs and have them put up by this fall."

WEDNESDAY

"Pendleton Round-Up"

ARCADE

"Best By Test"

LAME BACK

rheumatism, neuralgia, or kindred pains quickly relieved by



Should be kept in every home. Sold only by us, 25c, 50c and \$1.00.

LEVY-VOGEL DRUG CO.
La Grande, Oregon

FISHERMEN

Round-trip tickets to points on the Joseph Branch from Looking Glass to Lostine, also to Meacham, will be on sale Saturdays and Sundays at one and one-third fare.

Return limit will be Sunday night.

For information tickets, etc., ask

J. H. KEENEY
Agent O-W R. R. & N.

WORKING CAPITAL

The Summer heat develops a certain laxness in the working capacity of the individual—it does not in the least affect the working capacity of money.

Dollars deposited in a Savings Account in the United States National Bank labor with the same diligence every hour of the day, day in and day out, every day of the year, earning interest at 4 per cent.

The United States National Bank
La Grande, Oregon.

BLYDENSTEIN SELF-RISING PASTRY FLOUR

A superior Pan Cake Flour that will do more than make flap-jacks. It will make better Cake, Biscuits, Waffles, etc., than ordinary flour, with less trouble and danger of failure and less eggs and shortening—an economy not a luxury. An inexperienced cook can do as good baking as older cooks.

Can Do Better
A BOON TO CAMPERS
Oregon Grocery Company, Distributors
Made and Guaranteed By
H. G. BLYDENSTEIN
Pendleton, Oregon

Blydenstein's Self Rising Pastry Flour

For Biscuits, Cakes and Hot-Cakes
Try a ten-pound sack and be convinced it is the Best You Ever Tried

Ranch Bacon, 22 Cts. per Lb.
Vegetables and Fruit
Come in and look at our Camp Stove if you are going camping

SIX DELIVERIES EVERY DAY

Try Us For Service
Phone Main 35

Oregon Co-Operative Association

1118 1-2 Adams Ave. La Grande, Ore.
—Branches at—
IMBLER, OR. EVANS, OR.

Baker Boozers Fined.
Baker, Aug. 1.—Parties by the name of Owen and Clout yesterday pleaded guilty in police court to the charge of taking liquor to the public park Sunday afternoon and drinking it there. They were fined \$25 each, which was paid, and Owen was fined

an additional \$5 for starting a fight. That the men and others involved with them secured whiskey somewhere from bootleggers was apparent, but the stories were so conflicting that City Attorney McCulloch did not feel justified in filing charges at this time. Information gained from the

men may result in further investigation from which tangible information may develop.

Park for Marshfield.

There is a favorable report on the Chamberlain bill granting the use of the Coos head military reservation to Marshfield and North Bend for park purposes.

QUIT MEAT WHEN KIDNEYS BOTHER

Take a glass of Salts before breakfast if your Back hurts or Bladder is troubling you.

No man or woman who eats meat regularly can make a mistake by flushing the kidneys occasionally, says a well-known authority. Meat forms uric acid which excites the kidneys, they become overworked from the strain, get sluggish and fail to filter the waste and poisons from the blood, then we get sick. Nearly all rheumatism, headaches, liver trouble, nervousness, dizziness, sleeplessness and urinary disorders come from sluggish kidneys.

The moment you feel a dull ache in the kidneys or your back hurts or if the urine is cloudy, offensive, full of sediment, irregular of passage or attended by a sensation of scaling, stop eating meat and get about four ounces of Jad Salts from any pharmacy; take a tablespoonful in a glass of water before breakfast and in a few days your kidneys will act fine. This famous salt is made from the acid of grapes and lemon juice, combined with lithia, and has been used for generations to flush and stimulate the kidneys, also to neutralize the acids in urine so it no longer causes irritation, thus ending bladder weakness. Jad Salts is inexpensive and cannot injure; makes a delightful effervescent lithia-water drink which everyone should take now and then to keep the kidneys clean and active and the blood pure, thereby avoiding serious kidney complications.

Lieut. Bryan, U. S. N. stated before the Am. Soc. of Naval Engineers: "Oils made from the asphalt-base crudes have shown themselves to be much better adapted to motor cylinders, as far as their carbon-forming proclivities are concerned, than are paraffine-base Pennsylvania oils."

Zerolene is scientifically refined from selected California crude—**asphalt-base. Highest competitive awards, San Francisco and San Diego Expositions. For sale by dealers everywhere and at service stations and agencies of the Standard Oil Company.**

ZEROLENE

the Standard Oil for Motor Cars