

You've hit the right tobacco

when you fire-up some Prince Albert in your old jimmy pipe or in a makin's cigarette. *And you know it!* Can't get in wrong with P. A. for it is made *right*; made to spread-smoke-sunshine among men who have suffered with scorched tongues and parched throats! The patented process fixes that—and *cuts out* bite and parch. All day long you'll sing how glad you are you're pals with



It's an easy job to change the shape and color of unsalable brands to imitate the Prince Albert tins, but it is impossible to imitate the flavor of Prince Albert tobacco! The patented process protects that!

PRINCE ALBERT

the national joy smoke

You take this testimony straight from the shoulder, men. You can smoke a barrel of P. A. without a kick! It hands out all the tobacco happiness any man ever dreamed about, it's so smooth and friendly. It's a mighty cheerful thing to be on talking-terms with your pipe and your tongue *at the same time*—but that's what's coming to you sure as you pin your faith to Prince Albert!

R. J. REYNOLDS TOBACCO CO., Winston-Salem, N. C.

Everywhere tobacco is sold you'll find Prince Albert awaiting your cheerful visit. Buy it in tins, red bags, 5c tins, 10c hand- some and half-pound hum- dreds—and for that sing- gular crystal-glass humidor with sponge-moistener top that keeps the tobacco so fit!

PANAMA RAIN IS GOETHALS' BIG FOE

Fourteen Earthquakes In Last Year Did Little Damage.

SLIDES COME IN WET SEASON

Report Says the Zone Would Be an Ideal Place to Live Were it Not For the Rainy Times—Death Rate Has Been Materially Lowered During the Last Year.

The wet season, not earthquakes, is the enemy of the Panama canal. This appears from the annual report of George W. Goethals, governor of the canal zone, covering the last fiscal year.

He notes that while fourteen seismic disturbances rattled the dishes along the canal during the twelvemonth his report describes, none did any damage. Four were of comparatively local origin. Three were violent enough to be felt generally over the zone.

It was during the wet season between April and October that the slides developed. As an illustration, operations in the vicinity of the Cucaracha slide had progressed by Aug. 15, 1914, to a point which warranted opening the canal to traffic.

Two months later a slide came which completely closed the channel. The entire east bank slid into the canal in a strip 2,100 feet long and reaching back 1,000 feet from the bank. The lower strata squeezed into the cut, so that at some points the forty-five feet of depth previous to the slide was shoaled to nine inches.

New Channel in Six Days.

In six days a new channel had been cut capacious enough to pass shipping. The movement continued, however, after the beginning of the dry season, so that it became necessary to close the canal again from Oct. 31 to Nov. 14 and from March 4 to March 10.

The Gallard cut, after remaining fixed for a year, began a demonstration last June. By the 30th of the month 5,000,000 cubic yards had slipped relentlessly into the canal, nullifying the labor of years.

At times the channel shoaled so rapidly that it was necessary to drag after the passage of each ship. In some instances dredging was required before the next vessel could pass.

Miscellaneous dredging was kept up throughout the year. A total of 1,245,915 cubic yards of earth and 98,680 cubic yards of rock were taken out at the Pacific terminals.

Conditions Otherwise Ideal.

Were it not for the slides the zone would appear, from the governor's report, to offer ideal conditions of residence. Living is cheap and surroundings are healthful.

A compilation of expenditures shows that the average amount spent for breakfast at Cristobal was 21.24 cents, for luncheon 29.71 cents and for dinner 31.42 cents. At the Ancon hotel breakfast cost on an average 19.5 cents, luncheon 33.2 cents and dinner 30.7 cents.

On the health side it is noted that the death rate was cut from 7.92 for 1914 to 5.72 for 1915. The death rate from disease was cut from 5.17 to 3.61.

Between Aug. 15, 1914, and June 30, 1915, 530 vessels, representing a net Panama canal tonnage of 1,884,728 and cargo tonnage of 2,125,735, were passed through from Atlantic to Pacific, and 558 vessels, representing a Panama canal tonnage of 1,958,307 and a cargo tonnage of 2,844,057, from Pacific to Atlantic, making a total of 1,088 vessels, with a net canal tonnage of 3,843,035 and a cargo tonnage of 4,969,792.

On finances the report says: "The current expenses charged to operation and maintenance of the canal during the year amounted to \$4,112,550.48, while \$100,608.52 had been charged during the previous year, a total of \$4,259,159. Tolls collected for vessels passing through the canal during the year amounted to \$4,343,883.69; tolls for the prior year amounted to \$14,618.68, a total of \$4,358,502.37 to June 30, 1915.

Excess of Tolls, \$214,833.21. "The excess of tolls collected over the current charges for the year was \$214,833.21, and for the entire period to June 30, 1915, the excess was \$68,843.37. It is roughly estimated that total refunds may aggregate \$400,000, which will show an excess of operating expenses over collections.

"Congress has appropriated for the canal \$304,399,149.02 to June 30, 1915. Of this \$305,999,116.72 has been appropriated for the construction of the canal and its adjuncts."

KAISER LAUDS VON EMMICH.

In Letter to Widow Tells What a Great Soldier He Was. Emperor William has sent a message of condolence to the widow of General von Emmich, the conqueror of Liege, who died the other day. In his message the emperor said:

"I have lost an officer whom I highly esteemed as a paragon of fidelity and devotion both as soldier and man. When history describes the most glorious achievements of this war—Liege, St. Quentin, Gallia and Poland—his name will occupy one of the first places."

COSTLIEST PICTURE EVER IN OREGON COMING HERE

GEORGE SIEGMAN, ONE OF THE STARS IN GRIFFITH'S "AVENGING CONSCIENCE" SOON TO BE AT THE ARCADE.



owned by Orton E. Goodwin and Sol Baum, who outbid all other agents in obtaining the picture. It is declared to be the most costly picture ever shown in this city.

In addition to its week's run at the Heilig theatre, Portland, "Avenging Conscience," broke all attendance records at the Strand Theatre, New York, where the manager declared it was the greatest picture ever in his house. At Seattle, the Melbourne Theatre showed it to greater throngs than saw "The Birth of a Nation" in that city.

The wonders of film production have been taxed in producing "Avenging Conscience," and it is for this reason that Mr. Griffith declares it is two years ahead of the day. From many standpoints it marks an entirely new era in motion picture photography.

The showing of "Avenging Conscience" in La Grande will be a notable one.

Today's Oddest Story.

Washington, D. C., Jan. 5.—An order of dismissal has been filed in the case of a cigar manufacturer of Jersey City, N. J., who through his attorney, Joseph P. Tumulty, sued the William G. McAdoo Tunnel company for damages before Vice Chancellor Garrison. After McAdoo became Secretary of the Treasury, Garrison Secretary of War and Tumulty Secretary to the President the case was settled.

Use our Want Ad column.

KING COAL'S BEST

Advertisement is—that the people who bought it last winter and the winter before are using it now. Repeat orders are what establishes a business.

QUALITY IS OUR PASS-WORD.

LA GRANDE FUEL COMPANY.

106 Fir St. PHONE :: MAIN 700.

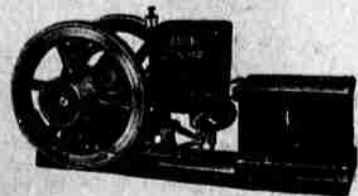
Opposite Thorne & Wilcox Grocery.

Announcement

Fairbanks, Morse & Co. standard line of gasoline and oil engines pumps, windmills and electric motors.

- 2 horse power gasoline engine \$59.00
- 4 horse power gasoline engine \$99.00
- 6 horse power gasoline engine \$149.00

Other sizes in proportion f. o. b. Beloit, Wis. Ask our nearest agent about it.



J. J. QUINLAND CO. Inc.
Salesroom & Shops
Island City, Oregon.
Phone Black 1392

Ajax tires, Oakland automobiles, garage in connection.

HOUSEWIVES! Flour is Advancing

BUY NOW WHILE OUR PRICES ARE AT ROCK BOTTOM, AS WE WILL BE COMPELLED TO ADVANCE OUR PRICE IN A VERY SHORT TIME.

WE RECOMMEND AND GUARANTEE.

SNOWDROP FLOUR, PER SACK \$1.45
There is nothing better.

GOLD NUGGET FLOUR, PER SACK \$1.50
Best on earth or any where else.

GET OUR PRICES ON QUANTITIES.

HARRIS GROCERY
PHONE MAIN 70 FARMERS PHONE B 192
408 North Fir Street, Cross Track

THERE ARE MANY REASONS WHY EVERY HOME IN LA GRANDE SHOULD HAVE ELECTRIC LIGHT.

Eastern Oregon Light & Power Co.

Always at Your Service Telephone Main 43

THE NEW CIGAR
MCCARTHY'S IMPERIAL
5c, 10c and 2 for 25c Made in La Grande

YOUR CHANCE TO OWN A HOME OR TO MAKE A GOOD Investment

NEAR HIGH SCHOOL (426) (383)

Modern 5 room house with cemented basement, bath and toilet; sewer and cement walk in and paid for; electric lights, phone and water; Cor. 3rd and M. Sold twice for \$2400. Price now reduced to \$1800. Terms, \$400 down and \$19 per month including interest. These terms can be adjusted to suit buyer.

7 ROOM HOUSE

Stone cellar, large barn, chicken house, lot 90x250. Price \$1400. Terms can be arranged to suit purchaser.

1605 WASHINGTON AVENUE (424)

Five room house, bath and toilet, stone foundation; good barn on alley; lot 95x120; Just remodeled inside and out and newly papered; cement walk around house and to barn. Really 2 lots, plenty room for another house. Price \$1700. Terms \$300 cash, balance plenty of time.

RENT OR SALE.

We have a house in rather poor repair that we will rent to some carpenter for fixing it up. Or we can sell it on very easy monthly payments.

MODERN 5 ROOM

house, basement, sewer in and paid for. Lot 60x110. Near high school—price has been cut to \$1450. Terms \$200 cash, and \$20 per month.

NICE SUBURBAN HOME (383)

Good 8 room house, bath and lights, barn, wood house, chicken houses and runs; fine orchard and garden; lot 110x200; within 10 blocks of center of city. This place is an exceptional buy. Terms \$200 down, balance \$25 per month or \$300 per year. Cattle or Ford might be traded on this.

Let us insure your building, furniture, auto, merchandise, etc.

Geo. H. Currey

Opposite Y. M. C. A. Phone, Black 2001

HE WHO MOVES REAL ESTATE

108 Elm Street La Grande, Oregon.