

CHICAGO DUO LOCATE HERE

WILL INAUGURATE DAIRY FARM AT MT. GLEN.
Farmers Take Interest in Keeping Motorace Course Clean.

Monday through the real estate office of Geo. H. Curry Messers Scheaffer and Sequist, who with their families arrived from Chicago a few days ago, purchased the J. A. Fiek farm opposite the Iowa school house. This is one of the fine choice farms of the valley. Mr. Fiek will move onto other lands which he owns in the vicinity and will give all of his attention to his saw mill interests.

Early in the spring Mr. Shaefer visited the valley and was so well pleased that he returned with the intention of making Grande Ronde his home. His enthusiasm resulted in Mr. Sequist joining him. They will build another dwelling on the tract and make general substantial improvements. They expect to make a specialty of dairying and will soon be in the market for dairy stock and several horses.

Building Operations Big
Mt. Glen, June 9. (Special)—John L. Fiek has sold a ranch in Mt. Glen for \$6000.00 to a man from Chicago. Mr. Fiek will build a modern house and barn on a tract he bought from the Morrison estate.

A steam roller is at work on the race track near Mt. Glen. All farmers here signed to keep the road clear of traffic on the day of the races.

Several houses and barns are to be built in Mt. Glen this summer.

SELL FLATHEAD LAND JULY 20

Flathead lake, Montana is situated near to and slightly southwest of the Glacier National Park, the region of external ice, which may be reached by automobile from the lake in about three hours. The lake is in a valley 15 miles wide and 30 miles between ranges of the Rocky Mountains of scenic beauty, whose slopes are covered with fir, larch and pine trees. The lake has an area of approximately 360 square miles. The Flathead National Forest lies north, west and east of the valley. The lake streams abound in fish, and hunting is excellent. The lake is utilized for bathing, sailing, boating and yatching and several steamboats ply between the various towns upon its borders. The shores are well adapted for boat landings and erection of wharves.

The lands abutting the north half of the lake were disposed of many years ago and numerous homes and fruit orchards have been established thereon. The south half of the lake is within the former Flathead Indian Reservation. The climate is delightful, the thermometer ranging from about zero to 75 or 80 degrees above.

Apples, pears, cherries, peaches, and small fruits of the finest quality are raised upon lands bordering upon the lake, many without irrigation. Twenty-one groups of villa sites fronting on said lake have been surveyed into 905 lots or villa sites for disposition, and a sale of such portion thereof as the demand may warrant will take place in accordance with the regulations hereto attached. The

lots contain not less than two or more than five acres.

These villa sites are not only well adapted for summer villas for persons of wealth but for permanent homes for persons of moderate means and for fruit raising. Good roads, adapted to automobile use, skirt the shores of the lake.

The sale will begin at Polson on July 26, 1915, and continue at such other places as may be selected by the superintendent of sale. Polson may be reached from Kalspell either from east or west by lake shore. Automobile stages run daily from Polson on the lake to Ravalli, on the Northern Pacific Railway, and from Elmo, on the lake, to Plains on said railway, via Camas Hot Springs. Trains from Kalspell, on the Great Northern Railway, connect at Somers for the morning trips of the steamers over the lake to Polson and from Somers to Big Arm by way of Dayton, Elmo, and many other wharf landings on the western shore. Stop-over privileges can be obtained at Missoula, on the Chicago, Milwaukee & St. Paul Railway, and the lake be reached by automobile stage. The Canadian Pacific Railway will allow spot-over privileges at Elko, Fernie, or Michel, British Columbia, on tourist tickets from which points connections can be made with the Great Northern Railway to Somers on the lake.

Plans of the 21 villa sites will be on file in the following United States land offices: Billings, Bozeman, Glasgow, Great Falls, Harvre, Helena, Kalspell, Lewiston, Miles City, and Missoula, Mont.; Denver, Colo.; Cheyenne, Wyo.; Bismark, N. Dak. Pierre, S. Dak. Santa Fe, N. Mex. Phoenix, Ariz. Salt Lake City, Utah; Carson City Nev. Spokane and Seattle, Wash. Portland, Oreg. and Los Angeles and San Francisco Cal. A set of the plate will also be on file with the United States Reclamation Service, room 802 Post Office building,

Chicago, Ill. These plans will be subject to inspection without charge.

COMB SAGE TEA INTO GRAY HAIR

Ladies! Try this! Darkens beautifully and nobody can tell—Brings back its gloss and thickness.

Common garden sage brewed into a heavy tea, with sulphur and alcohol added, will turn gray, streaked and faded hair beautifully dark and luxuriant; remove every bit of dandruff, stop scalp itching and falling hair. Mixing the Sage Tea and Sulphur recipe at home, though, is troublesome. An easier way is to get the ready-to-use tonic, costing about 50 cents a large bottle, at drug stores, known as "Wyeth's Sage and Sulphur Hair Remedy," thus avoiding a lot of fuss.

While wispy, gray, faded hair is not sinful, we all desire to retain our youthful appearance and attractiveness. By darkening your hair with Wyeth's Sage and Sulphur, no one can tell, because it does it so naturally, so evenly. You just dampen a sponge or soft brush with it and draw this through your hair, taking one small strand at a time; by morning all gray hairs have disappeared. After another application or two your hair becomes beautifully dark, glossy, soft and luxuriant and you appear years younger.

Chamberlain's Colic, Cholera and Diarrhoea Remedy.

This is a remedy that every family should be provided with, and especially during the summer months. Think of the pain and suffering that must be endured when medicine must be sent for or before relief can be obtained. This remedy is thoroughly reliable. Ask anyone who has used it. Obtainable everywhere.—Adv.

The Greatest Resource

Lies in the fact that we handle samples. They permit us to give you a greater value at a lower cost than can be obtained from any other source. Let us show them to you.

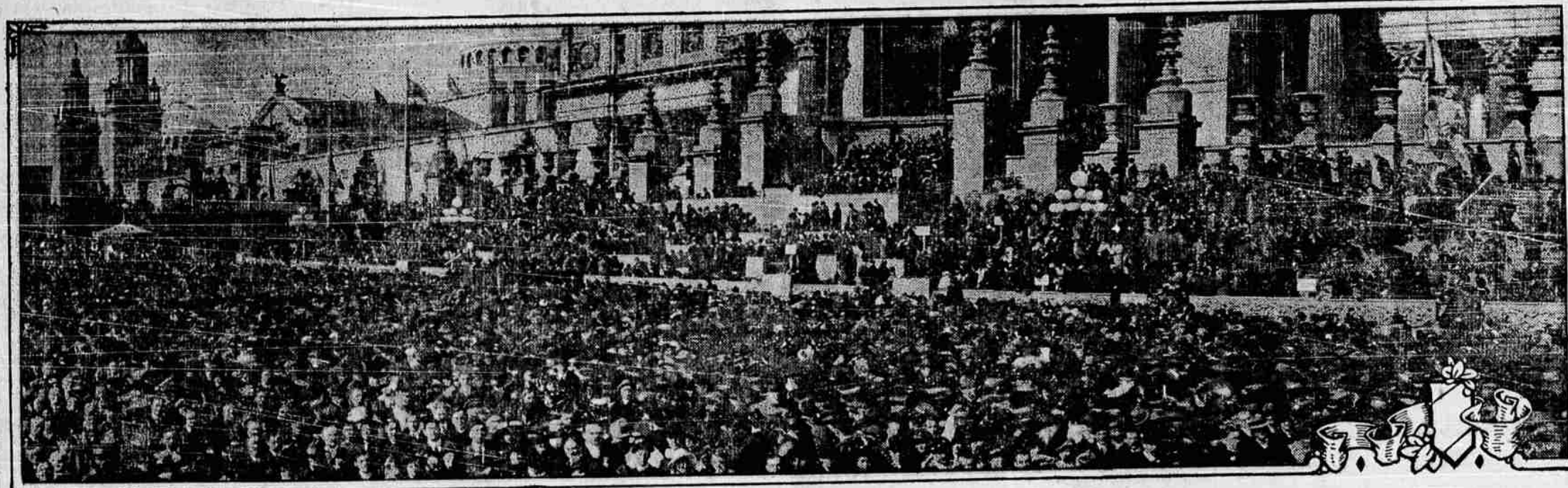
- Child's Patent Mary Jane Slippers 49¢
- Child's Shoes, large assortment of samples 60¢ 70¢ 85¢ \$1.10
- Child's Heavy Sandals, flexible soles 85¢
- Misses' Strap Slippers and Mary Janes \$1.25 \$1.45 \$1.65 \$1.95
- Ladies' \$3.00 Sample Pumps and Oxfords, latest styles..... \$1.49
- Ladies' \$3.00 Sample Pumps, all newest styles..... \$1.95
- Ladies' \$3.50 Patent, Cloth Top Lace Shoes..... \$2.95
- Ladies' Shoes \$1.49 \$1.95 \$2.45 \$2.85
- Boys' Summer Shoes \$1.45 \$1.85
- Boys' Dress Shoes, button or lace..... \$1.65 \$1.85 \$2.15
- Men's Muleskin Shoes \$1.45 \$1.65
- Men's \$3.50 Heavy Work Shoes \$2.45
- Men's Work Shoes \$2.85 \$3.45 \$3.85
- Men's \$5.00 Oxfords \$2.45

THE HUB

The Drummers' Sample Store

Millions Visit World's Great Panama-Pacific International Exposition at San Francisco

ALL RECORDS FOR ATTENDANCE BROKEN BY MARVEL EXPOSITION CITY AT THE GOLDEN GATE.



VAST CROWD GATHERED BEFORE THE HUGE TOWER OF JEWELS. ARE YOU GOING TO VISIT THE HUGE EXPOSITION?

THIS remarkable panoramic photograph shows part of the vast crowd that gathered on the opening day of the Exposition, Saturday, Feb. 20. The crowd was not only the greatest ever brought together in the west, but in vastness it broke all previous exposition attend-

ance records. The grounds were thronged with visitors from every part of the globe, and the big attendance still continues. The opening day crowd was remarkably peaceful, and no arrests were made by the Exposition guards or military during the day, and but one child was lost, and it was returned to its mother within fifteen

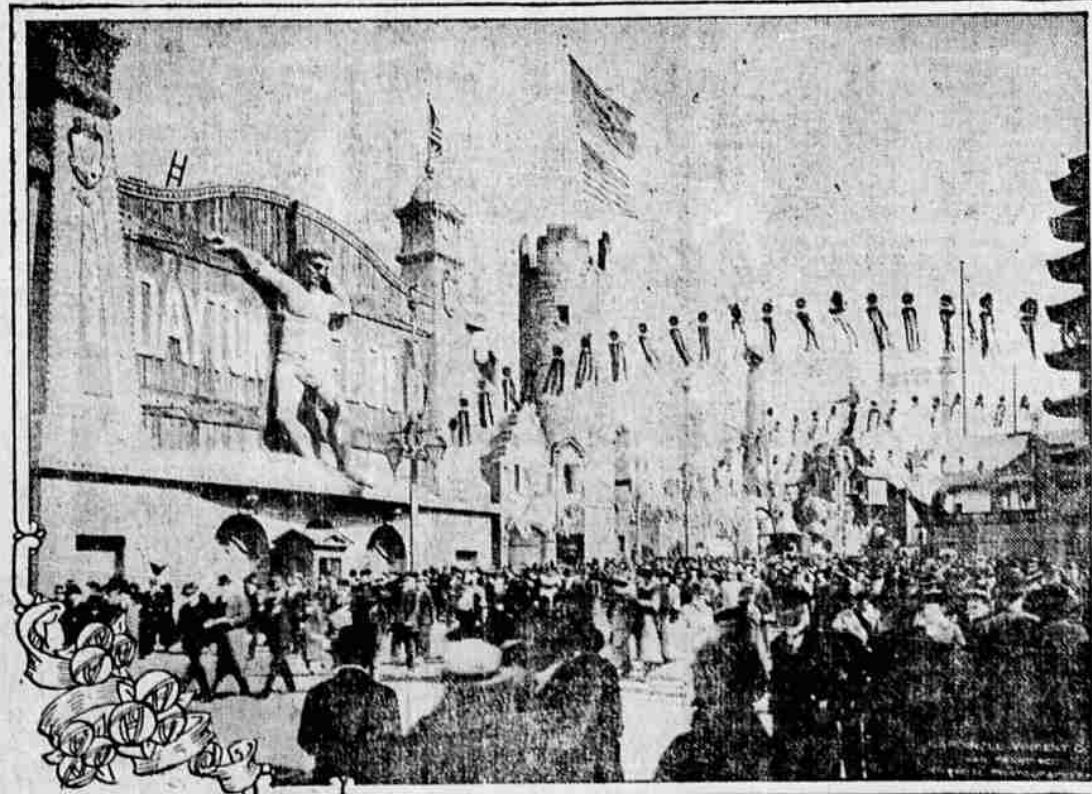
minutes. There were no accidents. The photograph above shows, on the left, the Italian towers guarding the entrance to the Court of Palms, next the Palace of Varied Industries and in the center and on the right the huge grand stand built before the Tower of Jewels. Here Secretary of the Interior Franklin K. Lane, acting in behalf of

President Wilson; President Charles C. Moore of the Panama-Pacific International Exposition, Dr. Frederick J. V. Skiff, director in chief, accompanied by the thirty Exposition directors, welcomed the vast throng that assembled in Van Ness avenue and its lateral streets and, headed by Mayor James Rolph, Jr., walked on foot through the

streets of the city and into the Exposition grounds through the Scott street entrance to the grand stand. At the time this photograph was taken Lincoln Beachey, aviator, had just appeared above the horizon in his flying machine, and the throng was awaiting Mr. Beachey's approach to circle the huge Tower of Jewels.

Since the opening day the Exposition has been crowded with visitors from all parts of the world. Low railroad rates, the sunny skies of California and the opportunity to see the wonderful displays of the forty-two nations that are participating in the Exposition are drawing thousands to the Exposition city at the Golden Gate.

Crowds on the Fun Zone at the Panama-Pacific International Exposition



VAST crowds throng The Zone, the amusement and concessions section of the Panama-Pacific International Exposition at San Francisco. The Dayton Flood is shown on the left, the Chinese Village and Toyland Grown Up on the right. The Exposition is breaking all world's attendance records.

President Charles C. Moore Making the Official Opening Day Address at the Panama-Pacific International Exposition Feb. 20



HANDSOME BOOK ON PANAMA CANAL AND THE EXPOSITION FREE FOR THE ASKING.

A sixty page book illustrated in colors and dealing with the Panama canal, the Panama-Pacific International Exposition, San Francisco and California will be sent free of charge to any address by addressing the Manager, the Bureau of Publications, Panama-Pacific International Exposition, San Francisco.