

**To Cut the Expenses That is the ?**

It is easy when you trade at THE HUB, the Sample Store. Samples from successful manufacturers, at prices that cut expenses nearly One-Half.

- Leather Work Gloves, worth 35c ..... 20c
- Sample Horsehide Gloves, worth \$1.25 ..... 85c
- Pigskin Work Gloves, worth 65c ..... 45c
- Men's work gloves, worth \$1.50 ..... \$1.00
- Men's Silk Hats, worth 75c ..... 45c
- Sample Dress Shirts, worth \$1.50 ..... \$1.00
- Paris Garters, worth 25c ..... 15c
- Suit Cases, worth \$2.00 ..... \$1.25

**THE HUB**

THE WORKINGMAN'S STORE

MAKE A NOTE of the fact that an abstract is an absolute necessity when you purchase real estate. No matter how well posted you might be—you don't have a full history of the parcel, as you do when we make an abstract of it. Accuracy guaranteed.

THE ABSTRACT & TITLE CO.  
Foley Hotel Building.

**ANOTHER PROOF OF THE EFFICIENCY OF ELECTRIC RANGES**

The new Darland apartment houses on Fourth Street will be equipped with Hughes Electric Ranges throughout. The installation of these ranges will make these apartments the most modern and convenient furnished apartments in the city.

Why not have an electric range in your home? Our meter readers are distributing a pamphlet of information on this subject, please read it carefully, then call at our office, where samples are on display, for further information.

**Eastern Oregon Light & Power Company**

**Its Time to Order Your Groceries**

Do it now—We're waiting, ready, instantly to fill your wants. Order before the heat of the day.

- Fresh Strawberries, direct from Hood River ..... 2 for 25
- New carrots, 3 bunches for ..... 25c
- Green onions, 3 bunches for ..... 10c
- Radishes, 3 bunches for ..... 10c
- Asparagus, 4 bunches for ..... 25c
- New tomatoes ..... 20c per lb.
- Oranges ..... 25c to 60c per doz.
- Lemons ..... 35c per doz.
- Grape juice, from 10c to 90c per bottle, in Red Wing, Armour's, Welch's and Royal Purple. Snider's, Campbell's Preferred and Heinz Soups, and many other good things all ready to make a quick lunch.

**C. J. BLACK GROCERY**

Corner Fir and Adams  
Phone Main 16

**WOOL SHIPPED WITHOUT RAILS**

WALLOWA CLIP SENT DOWN THE RIVER.

Wallowa County Sends First Wool to New Warehouse.

**SLIGHT REDUCTION NOTED**

There has been a slight reduction in some brands of flour other than home-made products which went down five cents a sack a few days ago. None-to-Equal and Snowdrift have been put down five cents a sack.

Enterprise, May 27.—The first Oregon wool to go into the new Columbia Basin Wool warehouse at Portland, was from Wallowa county. Furthermore, it went all the way from the shearing plant to Portland through the new open river, down the Snake and the Columbia, and the Cello canal. It was Elben F. Dotson's clip. These facts were brought out by E. W. Rumble, manager of the warehouse company, who is here explaining its purposes and showing sheepmen and bankers how, through cooperation, all can be benefited by the new concern. Jay H. Dobin is president of the company. Mr. Rumble is making a tour of the state on his errand and is stopping a little longer in Wallowa county where he has lived so long.

Mr. Rumble says his enthusiasm for the new business and his faith in its future have grown steadily since the company formed. It was formed by joint action of sheepmen of the state and Portland financiers, and promises to do a large part in putting the wool and sheep industry of the northwest on a sounder footing. Considerable wool has been shipped to the warehouse already and more is coming in. Only one of the sealed bid sales scheduled in towns through this and adjoining states has been held, the others being called off by agreement of growers and buyers. Most of this wool will go to Portland where the buyers will gather later for a series of great sales. The company also has large plans for assisting in financing the sheep business in many ways.

**FRUIT.**

- Cherries—2 boxes @ 25c
- Gooseberries—10 and 15 cents.
- Strawberries—Hood River 15c a box. Other kinds 2 @ 25c; Milton berries 10c.
- Grapefruit—California, 10c; Florida 15c
- Oranges—30c to 50c a dozen.
- Bananas 30c and 40c per doz.
- Bananas—10c lb.
- Lemons—30c and 35c.
- Apples—Eating, 50c, 75c and \$1.00 box; Cooking, 75c box.

**VEGETABLES AND MISCELLANEOUS.**

- Cucumbers—15c and 2 @ 25c.
- Peas—12c
- New Potatoes—10c
- Tomatoes 25 cts lb.
- Asparagus—12c lb.
- Fresh Radishes—3 for 10c
- Green Onions—3 bunches 10c
- Spinach—5c lb.
- Rhubarb—5c lb; 6 lbs @ 25c
- Parsley—5c a bunch.
- Potatoes—\$2.50 @ 2.75
- Chili peppers—40c.
- Honey—20c.
- New cabbage—6c lb.
- White Bermudas 10 cts @ 15 cts lb.
- Onions—3c lb.
- Beans—White 10; Lima, 12c; Pink 10c.
- Sugar, cane or fruit—\$7.25 sack cash; \$7.65 for 30 days time.

**BUTTER AND EGGS.**

- Butter—Fancy creamery, 30 cents, 1-lb. roll; 60 cents, 2-lb. roll.
- Ranch butter—2-lb. roll 45 cents to producer; 50c retail.
- Eggs—strictly fresh ranch, doz 20

**FLOUR, HAY, FEED, ETC.**

- Blue Stem Flour—\$1.80
- Royal Patent—\$1.75
- Snowdrift—\$1.90
- Upper Crust—\$1.95
- None-to-Equal—\$1.75
- Occident—\$2.50.
- Sea Foam—\$1.65
- Gold Medal—2.50.
- Timothy—(To producer) \$11.00.
- Rolled Oats—\$1.6 per cwt.
- Oats—(To producer) \$1.60.
- Bran—\$1.60.
- Alfalfa hay—(To producer) \$11.00
- Rolled Oats—\$1.95.
- Barley—\$1.50.
- Rolled Barley—\$1.75 wt.
- Wild hay—(To producer) \$9.00 baled.

**CHICKENS AND FOWL.**

- Hens—16c@18c, retail, dressed.
- Turkeys—22c@25c, retail.
- Spring friers—22c@25c, retail.

**MEAT AND BEEF.**

- General hog market range:
- Best light ..... 7.15 @ 7.25
- Medium light ..... 7.05 @ 7.10
- Rough and heavy ..... 6.10 @ 6.50
- General cattle market range:
- Select hay fed steers ..... 6.75
- Good to choice ..... 6.25 @ 6.35
- Best cows ..... 5.50 @ 5.75
- Ordinary ..... 3.00 @ 4.75
- Fancy bulls ..... 4.50 @ 5.00

**SHEEP.**

- Spring lambs ..... 7.50
- Best yearlings ..... 6.00 @ 6.25

**Lame Back**

Lame back is usually due to rheumatism of the muscles of the back. Hard working people are most likely to suffer from it. Relief may be had by massaging the back with Chamberlain's Liniment two or three times a day. Try it. Obtainable everywhere.

**Want Ads.**

YEARS AGO the crier announced the auction sale—then came the hand bills and their "hit or miss" results—today the effective way is the Want Ads—they hit the mark. That's what counts.

FOR RENT—Two or three furnished housekeeping rooms, modern, pantry, bath; first floor; close in. Phone main 715, or call 904 Penn. Ave. 4-7tf.

FOR RENT—Five-room house with cellar. Lights and water. Call Black 1931, or W. A. Worstell. 5-3-tf

FOR RENT—Eight room house, modern; with or without furniture. 904 Spring St., Mrs. Swaney. 5-10tf

FOR RENT—Six room modern house at 1008 Oak street. Call at house. —Adv. 5-19-tf.

FOR RENT—Furnished housekeeping rooms, 1307 Penn. avenue. Phone Red 3681.—Adv. 5-24-tf.

FOR RENT—A new three room bungalow furnished or unfurnished. 1219 W avenue or phone Red 1262. —Adv. 5-25-tf.

FOR RENT—Modern house at Cor. of Jefferson and Oak. Farmer 28X2.—Adv. 5-25-tf.

WANTED—A housekeeper on a farm; must be a good cook. No other need apply. Write L. care of Observer.—Adv. 5-26-6tp.

FOR SALE—Furniture of a 5 room house, 1002 Third. Black 3511.—Adv. 5-25-4t.

FOR SALE—Good clean hardware stock, with plumbing and tin shop in connection, located in good town of 2000 and doing good business, will invoice \$7000. Sealed bids will be received up to and including June 5. The right to reject any or all bids is reserved. A certified check of 10 per cent to accompany each bid. Send your bids it must be sold. Address E. C. Tuckey, Union, Ore.—Adv. 5-27-3t.

FOR RENT—Five room modern cottage, furnished, \$20. per month. Inquire 1914 First street.—Adv. 5-27-3tp

FOR RENT—One modern seven room house, furnished. Mrs. Zuber.—Adv. 5-27-5tp.

LOST—In postoffice, a package containing pair of tan shoes; package bearing name Effie Schaffer. Return to Observer. 5-27-3t.

FOR RENT—Five room house and three room house, close in. 1106 N or phone Red 3872.—Adv. 5-28-3tp

High Grade Job Printing costs no more than the other kind—Observer

**FARM LOANS**

Reasonable Rates

SECURITY LAND & SAVINGS COMPANY  
La Grande, Oregon



The FRONT LACE CORSET with The VENTILLO Back

**"La Camille"**

FRONT LACE CORSETS

Give the wearer a beautiful back, proper abdominal support, and extreme style with perfect comfort. There is a model for every type of figure. Come and be fitted to "La Camille" and you will be convinced of its supremacy.

PRICES \$2.00 AND UP

Mrs. Robt Pattison  
Corsetiere

Phone R. 3221 Res. 1702 Oak

**You are offered the right hand**



**friendship**

A man should know his banker. Call in—you will feel at home in our

**bank**

Nothing can grow that never gets started. Take a Savings Account, for instance. It grows by interest as well as additions. You can start a Savings Account here with a single dollar. Try it and watch it grow.

**The United States National Bank,**  
La Grande, Oregon

DIRECTORS

- Wm. Miller
- Geo. T. Cochran
- U. G. Couch
- Dr. A. L. Richardson
- J. C. Henry
- J. L. Caviness
- J. F. Conley
- Dr. C. T. Bacon
- T. J. Seroggin

**D. R. FONG MEDICINE CO.**  
CHINESE ROOT AND HERB REMEDIES

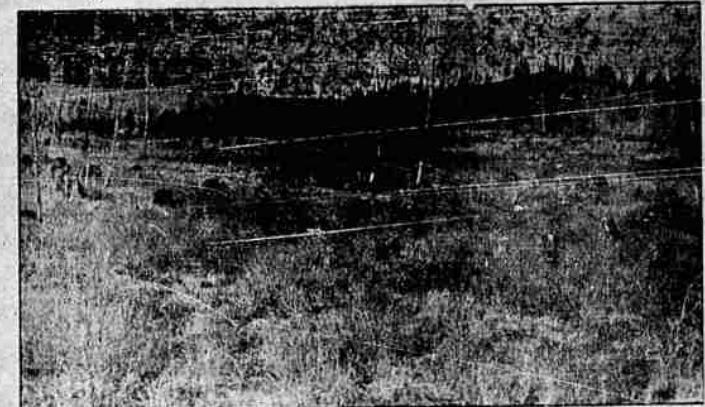
Cures Bodily Diseases With Root and Herb Treatment. Free Consultation

Phone 762  
1412 Adams Ave.

La Grande  
Ore.



**We Have Sold 3000 Acres of Palmer Lands**



OVER 1000 ACRES HAVE BEEN SOLD THIS SPRING.  
30 FAMILIES HAVE PURCHASED THIS LAND  
15 FAMILIES ARE NOW LIVING ON THEIR PLACES.  
AN EIGHT MONTHS' SCHOOL IS NOW IN SESSION.  
SURVEYORS ARE ABOUT READY TO LOCATE EVERY 40 CORNER ON THE ENTIRE TRACT.

SEVERAL NEW HOUSES HAVE BEEN BUILT THIS SPRING.  
All told, several hundred acres are now in cultivation. Besides, grains, potatoes, alfalfa, clover, peas, timothy, garden truck, fruit trees, berries, etc., which have been planted this spring, an experiment tract is being planted, including corn, kale, vetch—in all, 50 or 60 varieties of seed.

A NEW ROAD DISTRICT IS BEING PETITIONED FOR AND THE SETTLERS ARE PLANNING ON A SYSTEM OF EXTRA GOOD ROADS.

THE FARMERS LIVING ON THESE LANDS ARE OUR BEST ADVERTISERS.

\$15.00 PER ACRE; ONE-TENTH DOWN, AND ONE-TENTH A YEAR.

**IT WILL PAY YOU TO INVESTIGATE**

For a home, a profitable farm, or an investment, Palmer lands cannot be equaled. Farms and ranches of any nature desired, from 80 to as many acres as desired, aggregating at least 4000 acres, all as good land as any yet sold, are still left. We have many inquiries and confidently expect this entire body of land will be sold in the next few months. If interested, call and let us show you photographs and maps and explain further in detail. We can find what kind of a place you want and will take you to the places that will most likely suit your needs, and return in one day on the O.W. R. & N. The time between trains at Palmer Junction is six and one-half hours, which gives ample time to look over much of this land. If a longer stay is desired, accommodations for board and lodging can be arranged. The roads are in good condition to drive over with wagon. Our representative will either meet you at Palmer Junction, or go down with you at any time you wish.

Whenever You Want to Buy, Sell, Trade, Rent or Insure, See

**Geo. H. Currey**

108 ELM ST.  
Phone, Black 2001

HE WHO MOVES  
REAL ESTATE

LA GRANDE,  
OREGON.