



**More New Millinery**

Four shipments in the last three days. A wonderful line of all that is new.

**SHEPERDESS**

new pokes, latest in sailors, snappy leghorns, a wonderful line of imported panamas, velvet ribbons, roses galore. See our line at once.

**Wonderful Sale of the P. N.**

Practical front corsets, 3 shipments in three weeks is our record on these, the latest in corsetry. You will find in this new corset grace, fit and beauty that you cannot find in other corsets. Call and have them demonstrated.



Reliable Merchandise

**GEIBELS**

Department Store

Reliable Methods

**FASHION GOSSIP AND MOVIE NEWS**

**AS "PRINCESS CHARMING" SHE REIGNS IN KINGDOM OF MOVIES.**



**EDNA MAYO**

"LITTLE PRINCESS CHARMING" IS WHAT THEY USED TO CALL EDNA MAYO WHEN, AS A KIDDIE OF FIVE, SHE BEGAN HER STAGE CAREER. SHE

IS NOW ONE OF THE MOST SUCCESSFUL STARS IN THE PICTURE THEATERS AND SHE IS "PRINCESS CHARMING" IN THE KINGDOM OF THE MOVIES.

New York, Apr. 17.—April with apple blossoms and arbutus and the fresh green of the first leaves of Spring, has become the bride's month. If not the month of weddings, at least the month when the fascinating garments for the trousseau are displayed.

A traveling costume which I saw not long ago was shown with all the things necessary for a trip across the continent or for European travel. The suit was of very finely-twilled gray covert cloth, a fabric which is jacket, made with raglan sleeves, had a back slightly fitted and flaring below the waistline. The front was the unusual and distinctive feature of the jacket. It might be called surplice, for the right front buttoned with cloth buttons diagonally over the left side, and at the waistline it was extended into a tab, which was buttoned again beneath the arms. Braid was used at the sides, on the back and on the sleeves. The collar was a rounding affair which reached around the back and sides, with the rounding part in the front. The plain skirt, in two pieces, had the front cut with an extended tab

to correspond with the tab on the jacket.

With this suit was shown a trim little tuban of straw the same color as the suit, but with gay double wings of rose color placed directly on top of the hat. These divided to side and one on the other. A pair that one of the wings went on one of high gray kid shoes that laced up the side instead of up the front and had narrow black patent-leather tips was displayed to go with the costume.

Batiste and handkerchief linen with inch wide stripes of blue, gray, lavender, green, pink, or yellow and white are extensively used for tailored shirt waists and are a decidedly smart innovation after the vogue for plain colors. Therefore, the bride may select one or two, of these striped waists to go with her traveling suit unless a plain colored voile, crepe de Chine, or chiffon would be more useful. These are also smart and often more serviceable.

A very stylish linen suit for the bride, or for others who are adding to their wardrobe, may be seen in the illustration. Rose-colored linen is the material from which the suits

are fashioned. These now, long sleeved bolero jackets are often closed only at the collar and a button or two below the neck-line, from which point they flare open in the approved manner. Beneath the jacket one glimpses a dainty blouse of sheer linen. The skirt, pleated and stitched at the waist and hips is made with wide tucks at the back, trimming is the accompaniment of this costume.

A frock which will be a standby in any woman's wardrobe is of sand colored twilled taffeta. The bodice is full, with a high white organdy collar, which opens and flares in the front; this gives it the name of the Henry Clay collar. The sleeves are set in and rather full, having wide cuffs flaring over the hands. The many-gored skirt is very plain, but bears the earmarks of the latest cut.

An evening dress is made of changeable green taffeta, with a bodice rounding low, in front and back, and edged with a pleated frill of fringed taffeta. Following the line of the neck are several buttonholed slits, through which is drawn a lavender ribbon. This ties in the front in a large lover's knot. It is invisibly tacked to the waist and has the ends finished with tassels of flowers, which hang free. The taffeta skirt, slashed to the waistline on one side over a chiffon underskirt, is edged all the way around with black, while through the slashes a few inches above the bottom, is drawn lavender ribbon, which ends on either side of the slash with a large bow-knot and flowers-tasselled ends.

For afternoon frocks, very large polka dots are very smart and new. Cream white and ecru, dotted with red, green, blue, or lavender dots are seen. These dots are widely spread and sometimes as large as a dollar.

A striking costume is made with a



A Rose colored Linen With the New Smart Bolero and the Flaring, Pleated Skirt



An Effective Striped Linen, with Organdy Vest and the New Bell Showing the Cuffs

blue polka-dotted skirt with fullness held in at the waistline, trimmed with two scant ruffles on the lower edge. A waist in Eton effect is of plain-ecru silk, matching in color the background of the polka-dotted material. A natural-colored leghorn hat trimmed with blue velvet ribbon and pink roses is worn with this dress.

A simple dress of striped linen is shown in the second illustration with a V-shaped front, filled in with an organdy vest and collar. The sleeves are face back with white organdy, and the sleeve turned up a trifle to give a cuff effect. The full skirt is pleated at the waist without the pleats being pressed in at the lower edge. A hat in semi-poke-bonnet effect goes with the dress charmingly.

The collar-and-cuff are very useful to wear with simple frocks, and many a dress not quite up-to-date can be made so with the addition of one of these sets, in linen, organdy or Georgette crepe. The material and the type of collar-and-cuff set to be appropriate depend on the style of the dress.

Very fashionable is a wide Colonial collar with gauntlet cuffs to match. A Henry Clay set is made of stiffened voile or organdy, flaring up about the chin, with points turned over a trifle in front. The cuff to accompany this collar are cut to flare top and bottom.

The ribbon accessories which are worn this year are usually attractive. Very wide ribbon is fashioned into belts about eight or nine inches wide having tiny pockets on either side of the front. Girdles are made of wide ribbon, with narrow ribbon pleated and placed around the edges. Another very handsome girdle was corded five times and finished at the top with a frill of the ribbon. Still another girdle of large figured ribbon in shades of pink and white was edged around with a narrow black velvet ribbon. Down the center of the front the ribbon was back and forth, crossing each other as though it was a lacing. Another basque-like girdle is made to come to a point in front where the closing is finished with eyelets and laced.

**TIRED OF LIFE**

**Constant Backache and Rheumatism**

Foley Kidney Pills fixed up Texas brakeman so he's good as ever.

Almost down and out with kidney trouble. Rheumatism so bad he could scarcely get up when he sat down. Back ached all the time.

No wonder Mr. F. A. Wooley, brakeman on the road from Dallas to Jackson, Texas, "was tired of living."

"I saw Foley Kidney Pills advertised," he said, "I took some and after a short time I was thoroughly cured and am having no more trouble."

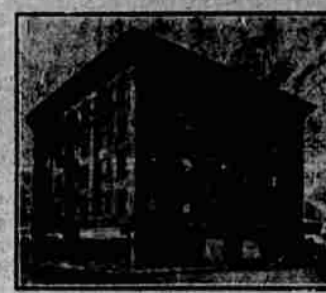
Your kidney pills will disappear—and with them the backache and rheumatism, by the use of Foley's Kidney Pills. Once your kidneys become strong and active, aches and pains will disappear like magic.

There's nothing to equal the genuine. Will help any case of kidney or bladder trouble not beyond the reach of medicines. Contains no harmful drugs. Try them.

**SOLD EVERYWHERE.**

High Grade Job Printing costs no more than the other kind—Observer.

**E. RIESLAND,**  
Plasterer and Contractor.  
Cement work of all kinds, Foundations and Flue construction.  
Cement block a specialty. Call and see these blocks at E. C. Davis' Marble Shop. Phone Red 871.



Reserve Your Rooms for the big **EXPOSITION** \$1.00 to \$2.00 a day.

Address:

**HOTEL THOMAS**

Next Door to Every Thing in San Francisco

**971 Mission Street**

Near Sixth.

ON DIRECT CAR LINE TO EXPOSITION AND DEPOTS.

**San Francisco, California.**

Take Universal Bus or Taxi to hotel at our expense.

**Irrigation -- Specialities**

LET US FIGURE YOUR WANTS

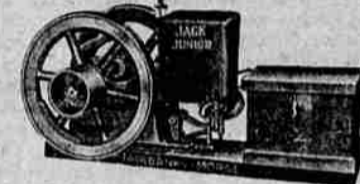
**ELECTRIC MOTORS GASOLINE AND OIL ENGINES**

Fresh from the well Auto-Pneumatic Water Systems

**WINDMILLS AND WATER WHEELS**

**General Agents**

Fairbanks Morse & Co. Byron Jackson Pumps Oakland Automobiles



**J. J. QUINLAND CO. Inc.**

Salesroom & Shops

Island City, Oregon.

Phone Black 1392

**BLUE MOUNTAIN HOTEL**

Cor. Chestnut and Jefferson Streets, La Grande, Oregon.

**C. WILSON, Prop.**

Newly furnished throughout. Close to depot. The hotel that caters to the Interior Trade.

**D. R. FONG MEDICINE CO. CHINESE ROOT AND HERB REMEDIES**

Cures Bodily Diseases With Root and Herb Treatment. Free Consultation

Phone 762 1412 Adams Ave.

La Grande Ore.



MAKE A NOTE of the fact that an abstract is an absolute necessity when you purchase real estate. No matter how well posted you might be—you don't have a full history of the parcel, as you do when we make an abstract of it. Accuracy guaranteed.

THE ABSTRACT & TITLE CO. Foley Hotel Building.

**PRESTIGE the reflection of QUALITY**

The satisfaction of good Workmanship, good Material, remains long after the price is forgotten on the House that you build for a Home.

**H. E. ROSKAMP, Contractor & Builder**

**MONUMENTS**

Latest designs, made in La Grande. We have our own quarry. Rubble and Dimension Stone always on hand. Concrete Blocks

**E. C. DAVIS**

Corner Greenwood and S. Ave., La Grande, Oregon