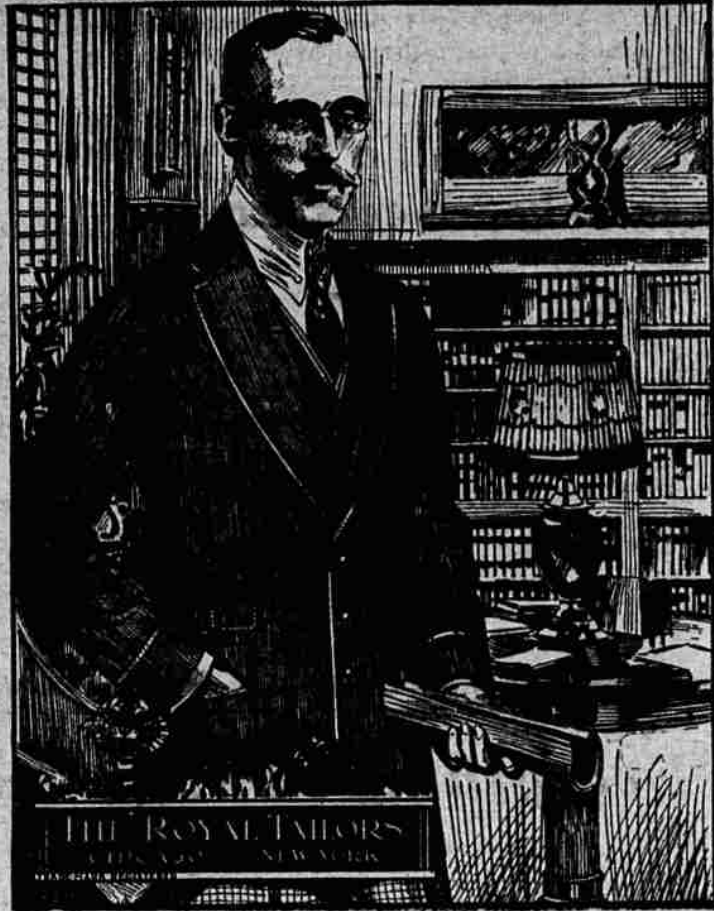


# To The Leading Lawyers of Our Town

We don't believe that anyone would accuse us of being foolish enough to try to Subsidize our keen - minded local attorneys with honeyed flattery.



Personal palaver is about as effective with a good lawyer as hysterical sobs are with a Supreme Court judge. A lawyer is trained to listen to his reason, and not to his emotion or impulses.

Now, our brief to the good lawyers of this town is just this: You are analytical men. You are influenced not by superficial claims, but by bedrock facts; not by snobbish prejudices, but by the real merits of the case.

And if you once know that a Royal Tailor label in a suit of clothes at \$25 means as much in tailoring quality as a local tailor's label in a \$50 suit—you are not going to let the smallness of Royal prices bias your judgment and cloud your appreciation.

All we ask of you is to come here and weigh the evidence, and let cold reason decide. View the half a thousand Royal custom tailor woolen beauties on display here; see the grand workmanship in the Royal suits we are delivering every day. Read the flaw-proof legal guarantee of "satisfaction or money back" we issue with every garment. Then, if you're not convinced—we'll plead guilty—

Get that "Million Dollar Look"—it's the Royal Tailored Look.

Of course, a legal education is a fine thing to have, but you don't absolutely have to possess one to appreciate Royal Values. If you're not a lawyer, come in anyway.

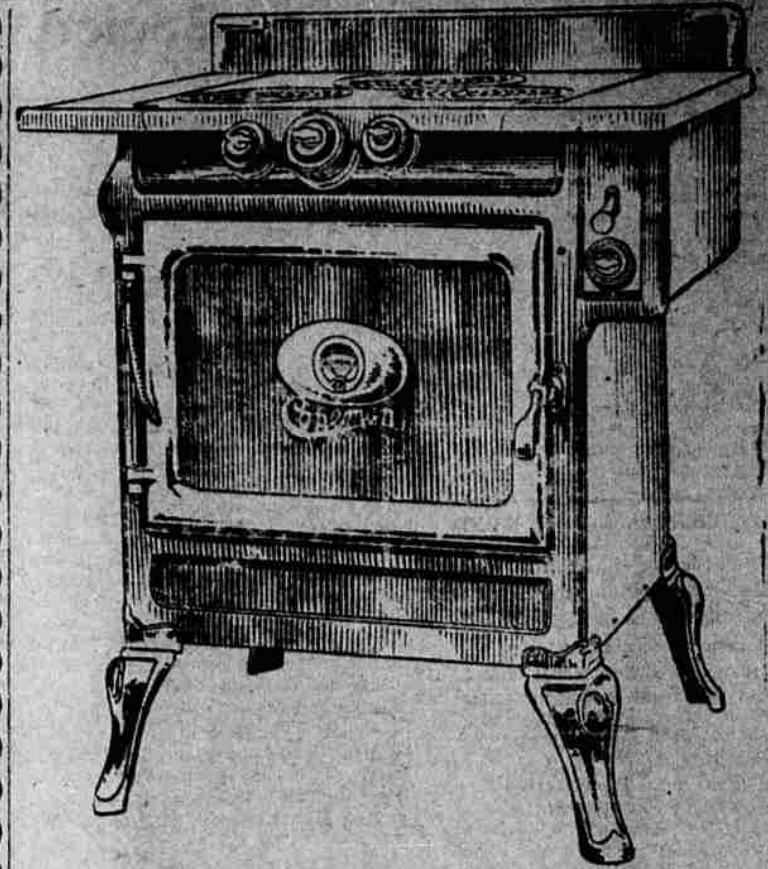
Prices--\$16 to \$35 for the utmost in Custom Clothes.

Reliable Merchandise

## GEIBEL'S

Reliable Methods

DEPARTMENT STORE



The Copeman Automatic Electric Ranges—the last word in ranges—Automatic control—Fireless cooker ovens—Safe, sanitary, convenient and economical in operation. Let us show you this range and explain the operation.

**Eastern Oregon Light & Power Co.**  
Telephone Main 34

## HOMESTEADS.

Canadian Homestead Land Club now being organized. 100 men only accepted. Right of selection same as number of application. We locate you on 160 acres of mixed farming land, partly prairie, partly light timber. Level black loam soil. No stone and no alkali, and within five miles of town and railroad. One of these claims worth a lifetime of savings, total fee including everything \$50. \$10 when you join, \$10 monthly. Balance paid when you file. Will all go together, between March 15 and April 1st. Here is a chance to get a first class farm for less than \$100, including location fee, railroad fare, filing fee, etc. Come and see us, or write at once.

## ALBERTA LAND CO.

402 Pittock Block, Portland, Ore.

## Voile Proves Favored Spring Fabric

CHARACTERISTIC COSTUMES THAT ARE FASHIONABLE.



Checked and Plain Voile Combine in This Frock



The Trimly Tailored Effect is the Feature of This Frock

khaki and field cloth suits which are the rage of early Spring. Simplicity is the mode in these waists, which button down the front and are sometimes tucked singly or in clusters. High collars, soft, and boned only at the sides, are very popular. These collars should not fit the neck tightly, but wrinkle loosely over the bones. If at all tight, they have lost their style.

The waists of thin fabrics are by far smarter than those made of heavier fabrics. Chiffon and a voile which is warranted indestructible and looks more like chiffon than voile but with the latter's durability, is used a great deal for these waists, even of the simplest and plainest styles.

Beneath these waists are worn corset covers of plain white, flesh-colored, or pink taffeta scalloped at the top and bottom down the front. Beige and sand-colored taffeta is also used, to be worn under white chiffon or voile waists.

In my illustration is shown a dress of tan voile. The bolero effect in the waist is made of an irregularly checked voile in dull shades of red, yellow and brown. The full skirt is untrimmed.

Voile and other fabrics are being sold with borders in contrasting colors. This helps in the trimming scheme, as it usually needs nothing else to make the dress complete.

A serviceable dress on trim new lines is shown in my second illustration. The side-closing of the waist, corresponding with the side-closing of the skirt, is both neat and attractive. A high collar with a turnover of white shows the latest whim in collars. Notice the simple belt of the same cloth, even to the cloth-covered buckle.

One of the odd and quaint novelties in evening frocks is made with flounces of white tulle edged with pink worsted embroidery is used on chiffon, net, silk and voile. Silk frocks have embroidered flowers at the waist, on the end of sashes, as a border to a hem. A blue frock which I have recently seen had a fringe around the bottom of yellow-and-blue crewel fringe.

In Europe mourning reigns; it is seldom that one goes upon the street in Paris, or London, or Berlin without passing more people in black, or black and white, than in any other color. This of course, causes black and white to be favored here. The new silks show stripes of black and of white, with white flower thrown in relief against the stripes. Black suits are made with vests of wide-striped silk.

Checks and stripes play a large part in the trimming of many of the Spring gowns. A stunning suit which I saw not long ago of blue voile was made entirely over a blue-and-white check silk, the checks being almost an inch square. A frock of black chiffon was made over a flounced underskirt which had each ruffle finished with a band of striped black-and-white silk an inch and a half deep, the stripes running up and down.

Children's frocks change much less in comparison with the styles of their elders, but this Spring finds the shortwaisted frocks much more popular than the long-waisted ones, although the latter have not become passed by any manner of means. The short-waisted frocks are very becoming to the small child and to the petite girl, but for the all, or very plump child the long-waisted models are much more becoming.

The Dutch styles are very much vogue for the small girl. These have plain, but full skirts, usually of one color and blouses of white, very short; the skirts are usually fastened to the waists with large buttons. These have been called the "Flor-

nce Dombey" dresses—probably because some enterprising wholesaler wanted to get a Dickens' name for a small girl to correspond with the boy's "Oliver Twist" suit.

### Notice of Final Account.

In the County Court of the State of Oregon for the County of Union.

In the matter of the estate of L. Remillard, deceased.

Notice is hereby given that the undersigned Administrator of the estate of L. Remillard, has filed his final ac-

count in the above entitled court, and that said court has set the 31st day of March, 1915, at 10 o'clock, a. m., in the County Court room in the City of La Grande, Union county, Oregon, as the time and place the consideration of said final account, and for the hearing of objections thereto. All persons concerned may appear at said time and place and object to said final account.

Dated this 27th day of February, 1915.

J. F. PHY,

# BROOMS

## At Wholesale Prices

	RETAIL	WHOLESALE
"Billy Burk" 27 lb. size .....	\$1.00	68¢
"Golden West" 24 lb. size .....	.80	56¢
"Daisy" 24 lb. size .....	.75	48¢
"Winner" 22 lb. size .....	.60	38¢

ALL WE ASK OF YOU IS TO LOOK OUR BROOMS OVER AND THEN COMPARE PRICE AND QUALITY WITH OTHERS. PHONE US MAIN 700. WE DELIVER.

## Eastern Oregon Produce Co. Inc.

New York, March 13.—The last month has proven that Paris is not napping. The couturiers have supplied fashions for the waiting Americans despite depressed conditions, and their openings have been almost as gay as ever. I say almost, for one cannot get over the atmosphere of grief which enters the place when one sees the suppressed sorrow on the face of a saleswoman or model. The mannequins themselves are not less gay, but it is often a forced gaiety. The gowns show less change than

heretofore, but what they lack in variety they make up in artistry. The couturiers have had no heart for the bizarre, and therefore have improved upon what they have had. The Paris openings show that voile, wool, silk or cotton is used a great deal in the development of the new gowns. There are separate waists also made of it, usually in sand or putty colors. They suit the