

CHARITY WILL BE SYSTEMATIC

AMALGAMATION OF VARIOUS ORGANIZATIONS MADE.

Mrs. Frank Jackson to Have General Supervision Over All.

Amalgamation of all charity organizations in La Grande was effected yesterday afternoon and the Neighborhood club is to have general supervision over all charity work from now on. This arrangement was reached at a joint conference of the presidents of the various church charity organizations, and the social service committee of the Neighborhood club. The result was that Mrs. Frank Jackson, 802 O street was put in charge of all charity work. Other organizations in the city will work in conjunction with her.

All those who have a needy case to report, or have something to give, can call Mrs. Jackson. Those who can conveniently deliver such articles themselves should leave them at the Y. M. C. A. building, and those who cannot, can have their donations picked up by calling Mrs. Jackson. Each church and organization will continue to keep an open eye for needy cases, but instead of working on them individually, will attend to it through Mrs. Jackson. This will avoid duplication and often times oversight of really needy cases.

This outcome of charity work has met with the general favor of all concerned, and systematic efforts along that line can now be carried out with greater efficacy.

CHURCHES SHOW ACTIVITY.

Tomorrow to Be Interesting Day for Churchgoers of the City.

Baptists will worship with the Presbyterians tomorrow night at 7:30. On account of the illness of Rev. R. E. Close, pastor of the Baptist church a union meeting of the Presbyterians and Baptists will be held in the Presbyterian church at 7:30 p. m.

Church announcements for tomorrow's religious services in La Grande show much to attract men and women to the houses of worship throughout the city. Church announcements follow:

FIRST M. E. CHURCH.
(Corner 4th and Spring.)
Sabbath school 9:45 a. m., Dr. Brownson, superintendent; Lucile Jorris, organist.
Morning worship 11 a. m.
District Superintendent W. A. Winters will speak in the morning.
Class meeting following morning service.
6:30 Epworth League, W. C. Wickline, president.
Evening service at 7:30.
Miss Olive Childers will speak in the evening. The pastor will be in Union Sunday and Monday.
Male Chorus will sing at night.
Prayer Meeting, Wednesday.
E. B. Fyke, Pastor.
Parsonage 1205 4th St. Residence Phone Main 706; Office Main 747.

PRESBYTERIAN CHURCH.
(Sixth and Washington avenue.)
Mrs. W. W. Berry organist.
Sabbath school, 9:45 a. m., Robert Eakin, superintendent.
Morning worship, 11:00 subject: "Building for God."
C. E. Prayer Meeting at 6:30 o'clock.
Leader and subject:
"The Good-byes of Life."
Evening worship at 7:30 o'clock.
The Baptists and the Presbyterians will worship together in the Presbyterian church, Sabbath Eve., 7:30.
All are welcome.
G. L. CLARK, Pastor.
Manse 1310 Washington, Phone B-2021.

FIRST BAPTIST CHURCH.
Corner Sixth and Spring.
Sabbath School 9:45 a. m., Jesse Wiseman, superintendent; Iva Wilson, organist.
Morning worship 11:00. Subject: The Postiveness of Christianity. Delivered by Rev. E. L. Mose of South Dakota.
B. Y. P. U. meeting at 6:30 p. m.
Leader and subject:
Jesse Wiseman. Favorite characters of the Bible and why.
The Baptist congregation will worship with the Presbyterian congregation in the evening.
Prayer and Praise Service Thursday evening at 7:30.
R. E. CLOSE, Pastor.
Main 766. Sixth and Spring streets.

ZION LUTHERAN CHURCH.
(Opposite High School)
Sabbath school at 9:45 a. m., William C. Drahn, superintendent, Harris Humbel, organist.
Class meeting, 9:45.
Morning worship 11:00 o'clock.
Subject:
"The Reward of Faith."
Evening Service at 7:45, subject: "Drifting."
William C. Drahn, Pastor.
Res. 1502 Second St. Phone Black 1291

M. E. CHURCH SOUTH.
North Fir Street.
Sabbath School 9:45 a. m., V. V. Croy, superintendent; Mrs. J. H. Lumpner, organist.
Morning worship, 11:00.
Manifesting The Christ Life.
Epworth League at 6:30.
Evening worship at 7:30.
Rev. W. A. Orr, Presiding Elder of the Oregon District will be with us Sunday, he will fill the pulpit both morning and evening, will have communion at the close of the morning

Wonderful Exhibits From All Lands Show the World's Best Progress

From Beginning to End Magnificent Panama-Pacific International Exposition Will Abound With Superb Educational and Entertainment Features.

By HAMILTON WRIGHT.
THE construction of the vast Panama-Pacific International Exposition at San Francisco was 95 per cent completed three months before the opening day, on Feb. 20, 1915. The early installation of thousands of tons of rare and costly exhibits from all parts of the globe and the participation of forty of the world's great countries have assured a celebration that will be unrivaled in its splendor, magnitude, interest and comprehensiveness.

From its opening until its close, on Dec. 4, 1915, the Exposition will abound with original features collected at an expenditure of many millions of dollars. It will present a cross section of human achievement. The Pan-

ama canal in a single day, and, far in advance of its opening, the Exposition had created an unprecedented interest throughout the world, and its opening was eagerly awaited.

In keen competitive exhibits there will be presented more than 80,000 single exhibits and groups of related exhibits portraying the results of the world's best efforts in recent years.

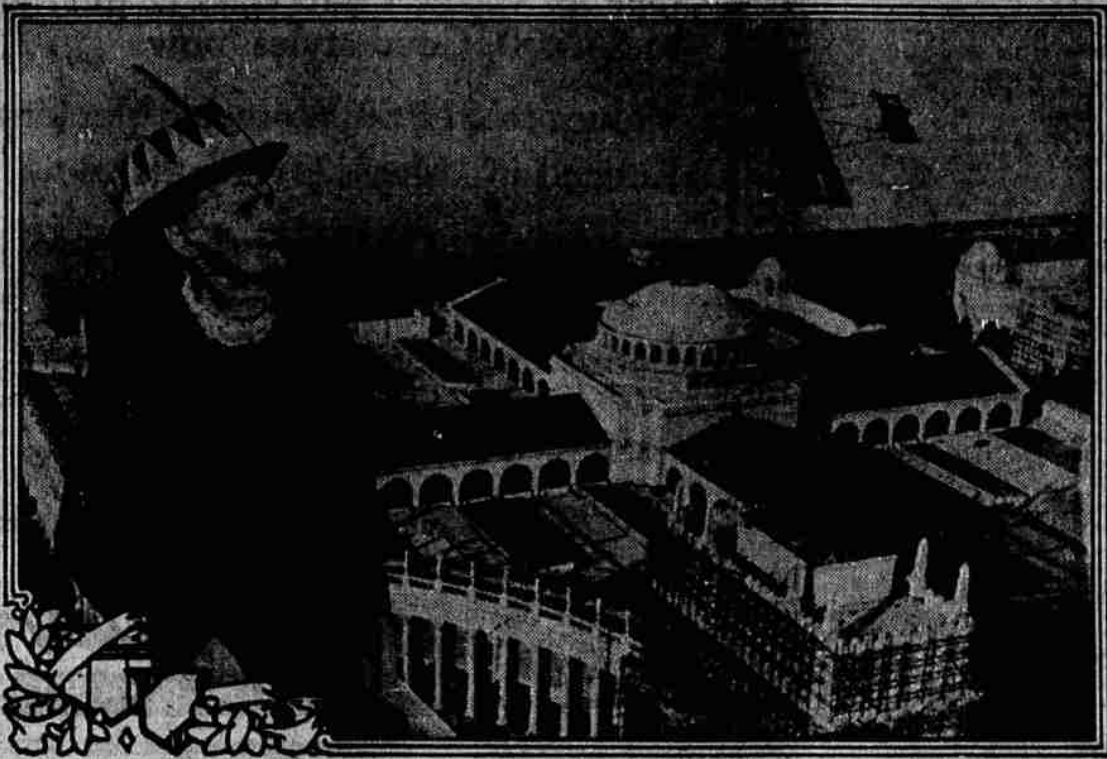
This wonderful Exposition, presented at an outlay of more than \$60,000,000, celebrates a contemporaneous achievement, the building of the Panama canal, and all exhibits that are entered for competitive award will be those that have been originated or produced since the great Louisiana Purchase Exposition at St. Louis ten years ago. The possible exception to this rule will be where earlier exhibits are

shown to illustrate the evolution of the processes of manufacture—as, for example, a display of a model of the first cotton gin in connection with the marvelous equipment into which it has evolved.

Many of the displays will be especially adapted to study by the delegates to great national and international congresses and conventions, of which more than 300, embracing almost every phase of human activity, have voted to meet in San Francisco in 1915. Delegates to the congresses interested in social progress and wel-

fare work will, for example, see in the Palace of Mines an exhibit three-fourths of an acre in extent, illustrating the manner in which the largest steel corporation in the world is caring for and plans to still further advance the welfare of its employees. In the Palace of Education they will be interested in a great United States government exhibit.

The great war in no way has diminished the prospect of attendance at the Exposition, and thousands of Americans will for the first time enjoy the educative trip across their native land. After the outbreak of the conflict the number of conventions deciding to meet in San Francisco proportionately increased. One of the most important of the assemblages will be the international engineering



Photograph courtesy San Francisco Examiner.

THE MOTHER OF LINCOLN BEACHEY, FROM THE TOWER OF JEWELS, 435 FEET ABOVE THE EARTH, AT THE PANAMA-PACIFIC INTERNATIONAL EXPOSITION, WATCHES HER SON LOOP HIS ONE THOUSANDTH LOOP.

When Lincoln Beachey, a son of San Francisco, on the occasion of his homecoming after breaking all world records as a daredevil loop of 909 loops, performed two entirely new and death defying stunts over the completed palaces of the Panama-Pacific International Exposition it was his aged mother who for the first time waved him on to fresh achievements. Mrs. Beachey held a place of honor, 435 feet up in the air, on the tiptop of the wonderful Tower of Jewels. From this aerial she was able to watch every erratic move of her daredevil son. She cried out only once. That was when he wrote the figures "1000" against the clouds, high above the two miles of completed exhibit palaces, significant of the looping of his one thousandth loop.

ama canal is today open and doing business on a far vaster scale than was predicted for it, and the Exposition, which celebrates the opening of the canal, is today revealed as the greatest manifestation of national achievement in American history. Here will be a neutral ground where even nations engaged in warfare will display on a scale never before equaled their progress in the arts, industries and sciences of peace.

Within three months before the opening of the Exposition as many as 2,000 tons of consignments had reached San

shown to illustrate the evolution of the processes of manufacture—as, for example, a display of a model of the first cotton gin in connection with the marvelous equipment into which it has evolved.

Many of the displays will be especially adapted to study by the delegates to great national and international congresses and conventions, of which more than 300, embracing almost every phase of human activity, have voted to meet in San Francisco in 1915. Delegates to the congresses interested in social progress and wel-

come, at which its distinguished chairman, Colonel George W. Goethals, will preside.

The foreign participation will be notable. The nations are not attempting to show everything that they produce, but will lay especial emphasis upon those products in which they excel. In the Danish display, for example, will be shown products of the Royal Danish porcelain factory at Copenhagen. Japan in her exhaustive exhibit will display priceless works of art, loaned by direction of the imperial household and many of which could not be duplicated. From Italy will be shown historic paintings of the old masters, hitherto never exhibited in America in the originals. From China there have reached San Francisco sections of exhibits collected under the supervision of the governors of the Chinese provinces. Rare silks and satins, carvings, inlay work in the precious metals, exhibits of the transportation methods employed in the old China and the modern methods used in the awakening republic will be shown.

New Zealand will make a marvelous exhibit of its rare woods, of its flocks, of its superb scenic charms. A large number of rare giant tree ferns from New Zealand will be found growing on the Exposition grounds.

The Argentine Republic early set aside a larger sum than any ever appropriated by a foreign nation for representation in an American exposition. The modern cities of Argentina, the schools, churches, libraries, the great live stock and agricultural interests will be extensively portrayed, and the mutual interests of South America and North America will be emphasized in almost every conceivable manner. From South Africa will be shown diamond exhibits and methods of extraction. The magnificent Canadian displays will reveal not only the widely known agricultural wealth, but will illustrate the scenic charms of the great Dominion, of snow clad mountain peaks, of far-reaching forest, of inland lakes in chains of silver and rushing mountain streams.



"THE END OF THE TRAIL," PANAMA-PACIFIC INTERNATIONAL EXPOSITION, SAN FRANCISCO, 1915.

This photograph shows James Earle Fraser's superb piece of statuary, "The End of the Trail," at the Panama-Pacific International Exposition. More than 800 beautiful sculptures are shown at the Exposition, the works of famous sculptors of the day. In addition to the sculptures shown out of doors, thousands of beautiful works of art are presented in the great Palace of Fine Arts.

services, and will hold our quarterly meeting at two o'clock on Sunday.
J. H. LUMPER, Pastor.
Parsonage 2103 North Fir street.

CHRISTIAN CHURCH.
Seventh and Pennsylvania Ave.
Bible School 9:45 a. m., Anna Morgan, superintendent; Ameta Johnson, organist.
Morning worship, 11 a. m. Subject: Evening worship at 7:30. Subject: Leon L. Myers, pastor. 1304 Penn. Phone Black 411.

ISLAND CITY CHURCH.
Island City church, Sabbath school 10 a. m., Walter Williams superintendent, Isis Bryant, organist. Morning worship, 11.
Morning Worship, 11 a. m. Epworth League at 7.
Evening worship at 8 o'clock. Subject:
The Thinking Man.
REV. W. D. SITTLER, Pastor.

SEVENTH DAY ADVENTIST.
M. St. opposite High School.
Meetings every Sunday and Wed-

nesday evening on Bible doctrines.

ST. PETER'S CHURCH.
Corner of Fourth Street and O Ave.
Regular Sunday Services.
Holy Communion, except first Sunday in the month, 8 a. m.
Sunday School—9:45 a. m.
Morning Services—11 a. m.
Evening services at 5 p. m.
Upton H. Gibbs, Rector.
Rectory, 1502 Fifth Street.

LATTER DAY SAINTS.
(Tabernacle Fourth and O Sta.)
Sabbath school 10:30 a. m. Eimer

ARCADE THEATRE

Wednesday January 27
A VOLCANIC ERUPTION OF LAUGHTER



30—CELEBRATED FUN MAKERS—30
10—BIG NEW NOVEL ACTS—10
20—SWEET-VOICE CHORAL COURT—20

THE BIG 6 COMEDIANS
BENNY JONES MANZIE CAMPBELL
DAVE SMITH GEORGE WALLS
CHICKEN REEL BEAMAN JOHN MOODY

BEAUTIFUL SCENIC AND ELECTRICAL EFFECTS
Gorgeous Street Parade, Daily

YOU CAN BUY THE BEST SEATS FOR 75 CENTS
BALCONY 50c, CHILDREN 25c
SEATS ON SALE RED CROSS DRUG STORE

Stoddard, superintendent.
Blanche Black, Organist.
Regular service at the Latter Day Saints tabernacle. Sunday school every Sunday at 10:30 a. m.
Regular sacrament and speaking services at 2 p. m.
Young People's Mutual Improvement association at 7:00 p. m. A. I. the public are cordially invited.
C. J. Black, Bishop.
Telephone Main 754.

CHRISTIAN SCIENCE CHURCH.
(In I. O. O. F. Hall.)
Sunday service at 11:00.
Sunday School at 10:00.
Wednesday evening testimonial at 8:00 p. m.

ST MARY'S ROMAN CATHOLIC.
Fall and Winter schedule of services:
Low mass 8:00 a. m.
High mass 10:30 a. m.
Rosary, Sermon, Benediction, 7:30 p. m.
Confessions heard Saturday afternoon and evening and daily before mass.
Father P. J. Driscoll, Pastor.

Played a Dual Role.
"Now," said a newly made husband. "I am your captain, and you must let me command you through life."
"You have a dual capacity," replied the former widow, "because you are my captain and my second mate also."
—London Telegraph.

Safe Offer.
"Your Scotch friend asked you to have a cigar, but I notice he didn't offer me one."
"Ah, you see he knows I don't smoke."
—London Tattler.

It is not the strength but the duration of great sentiments that makes great men.—Friedrich Nietzsche.

Printing Office Dialogues.
There must be some amusing conversations in a newspaper composing room, according to a young man who works in a printing office and who declares that dialogues like the following are of frequent occurrence:
Foreman of the Office—Brown, what are you doing now?
Compositor—I'm finishing "Setting a House on Fire," most done.
Foreman—What's Jones about?
Compositor—He's finishing that "Awful Murder."
Foreman—Tell him to hurry it up and take hold of this "Railway Horse." Morse, what have you on hand?
Morse—"Solid Men of Boston."
Foreman—Well, be sure and put them in small caps and then get busy with "A Warm Winter."—Yost's Companion.

For Sale

Five room house; ten city lots, plenty fruit trees—ground piped to every portion, can be irrigated with 50-foot hose. A first class home. Price if taken soon, \$1,800 cash. ADDRESS "A" CARE OBSERVER.

MAKE A NOTE of the fact that an abstract is an absolute necessity when you purchase real estate. No matter how well posted you might be—you don't have a full history of the parcel, as you do when we make an abstract of it. Accuracy guaranteed.
THE ABSTRACT & TITLE CO.
Foley Hotel Building.

Retail Department—Phone Main 8

For Lumber, Lath
Shingles, Sash and Doors
Ruberoid Roofing

GEORGE PALMER LUMBER CO

Just Arrived
1915 MAXWELL "25"
COME AND SEE IT
LEIGHTON'S GARAGE