

**Specify - Electric - Lights  
-For Your New Home-**

If you are building this year specify electric lights. It is safe to say that 90 per cent of the houses built in La Grande this year will install them. No home is modern without them. They are as important as sanitary plumbing.

Good lights are equally important, however, if you happen to live in a rented house. Your landlord owes it to you, and you owe it to yourself to have nothing but the best light. Electric lights are easily installed and will prove a source of lasting satisfaction to you. Call or phone Main 34.

**Eastern Ore. Light & Power Co.**  
"Always at Your Service"

**Strawberries**

- |             |                |
|-------------|----------------|
| GRAPE FRUIT | SPINACH        |
| ORANGES     | RHUBARB        |
| BANANAS     | FRESH TOMATOES |
| GREEN BEANS | GREEN PEAS     |
| ASPARAGUS   | LETTUCE        |
| RADISHES    | NEW CABBAGE    |

GREEN ONIONS

Store will be closed from 1:30  
until 3 o'clock Saturday

**J. G. Snodgrass Grocer**

PHONE 43

**Fresh Supply Of**

**LEMP'S BUCK  
AND PALE**

In Bottles and on Draught

**U. LOTTES**

Phone Black 51

1118 Jefferson Ave.

La Grande, Oregon

**WAXED BEANS  
LATEST THING**

MARKETS TO HAVE THEM TO-MORROW MORNING.

Tomatoes Becoming Very Scarce—  
Strawberries Improved.

Tomatoes are becoming a great scarcity. Local wholesalers had none today to offer the merchants, but on the other hand promised to have some choice waxed beans in for tomorrow morning's trade. Further, Saturday promises to have some strawberries that are to be the best of the season. Strawberries are holding their own in price fairly well, but are selling two for 35 or three for 50.

La Grande quotations today are:  
**VEGETABLES AND MISCELLANEOUS.**

- Radishes—5c, 3@10c.
- Tomatoes—25c per lb.
- Fresh peas—2 lb.@25c.
- Cabbage—6c (new.)
- Carrots—3 lbs for 10c.
- Spinach—3lbs.@25c.
- Beans—White, 8 1-3c; Lima, 10c.
- Beets—Beets 3 lbs. for 10c.
- Green Onions—5c per bunch, 3@10c.
- Onions—6c. lb., (small lots.)
- Potatoes—1c.
- New Potatoes 12½c.
- Asparagus—Walla Walla, 15c.
- Lettuce (hothouse)—30c lb.; head, 10c.

Rhubarb—4 lbs@25c. (Home grown.)

Chili peppers—40c.  
Sugar—Cane or fruit, \$5.05 a sack, cash. \$5.45 for 30 days; Beet sugar \$4.85 cash, \$5.25 for 30 days.  
Honey—20c.

**FRUIT.**

- Strawberries, 20c.
- Apples—75c@1.75.
- Oranges—25@45c per doz.
- Bananas—40c per doz.
- Figs—5c and 10c package.
- Lemons—35@40c.
- Grapefruit—15c. 20c. 2@35c.

**CATARRH VICTIMS**

Use Hyomei—You Breathe It. It's the right-to-the-point remedy not only for catarrh, but for head colds, sniffles, bronchitis, laryngitis or croup of children. You breathe it—no stomach dosing.

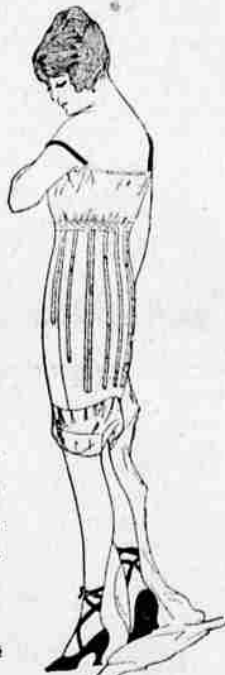
You will like Hyomei. It not only gives instant and lasting relief, but is entirely harmless, pleasant to use, and economical. Money refunded by Newlin Drug Co. if you are not benefited.

Hyomei is a combination of antiseptic oils that mixes with the air and quickly reaches the irritated and inflamed membrane of the nose. It's sure and safe healing begins immediately—you feel better at once.

If suffering from watery eyes, hus-

**A New Tango Gossard  
at \$3.50**

The low price of this new model and its rather extreme style have made it very popular with all women. The bust line is very low, the skirt long in the back and the boning is very light.



A complete line of all models on hand. Prices at from \$2.00 to \$8.50.

MRS. ROBT. PATTISON,  
Corsetiere.

Res. 1702 Cor. Spring and Oak,  
Phone Red 3221.

**Make a Place of Rest for the Entire Family**



**AEROLUX  
NO-WHIP  
PORCH SHADES**

The hot, burning sun cannot destroy the pleasures of your porch or veranda if you are the happy owner of

**AEROLUX No-Whip-Porch SHADES**

The wind cannot disturb your moments of repose, because these shades do not flap or rattle. Their variety of delicate colors make them adaptable to any porch and its furnishings. They are impervious to all weather conditions and make ideal out-door sleeping rooms of any porch. A telephone call will bring the "Aer-olux" man who will show you the color samples and then if you wish, take the measurement of your porch. Not expensive. The ordinary porch about \$10.00.

We favor D. Ward King Plan for good roads. Hear him Saturday, May 2nd.

**HENRY & CARR**

Complete House Furnishers

ky voice, discharge from the nose, or that choked-up feeling, try Hyomei now—today. All druggists sell it. Ask for the complete outfit.—1.00 size. Adv

**Child Cross? Feverish? Sick?**

A cross, peevish, listless child with coated tongue, pale, doesn't sleep; eats sometimes very little, then again ravenously; stomach sour; breath fetid; pains in stomach, with diarrhoea; grinds teeth while asleep, and starts up with terror—all suggest a Worm Killer—something that

expels worms, and almost every child has them. Kickapoo Worm Killer is needed. Get a box to-day. Start at once. You won't have to coax, as Kickapoo Worm Killer is a candy confection. Expels the worms, the cause of your child's trouble. 25c. at your druggist.—Adv.

**MONEY TO LOAN.**

I have money to loan on farm property in this part of Oregon.

J. R. OLIVER.

4-30-tf.

The Evening Observer on sale at Newlin Book store and the Club.

**E. RIESLAND,**

- Plasterer and Contractor.
- Cement work of all kinds, Foundations and Plue construction.
- Cement block a specialty. Call and see these blocks at E. C. Davis' Marble Shop. Phone Red 371.

**PALMER LOGGED OFF LAND**

**\$15 per Acre - - 10 Years Time**

**Deep - - Rich - - Black Soil**

Altitude and Climate Same as Grande Ronde Valley

These thousands of acres were formerly all homesteaded and many quarter-sections years ago were maintaining families.

The George Palmer Lumber Company has taken off the big trees, leaving the land in easy shape for clearing. This excellent land is now offered at much more liberal terms than the Government tendered the original settlers.

This is certainly an unusual chance to secure a fine farm and home with very little capital. It is also an exceptional opportunity for profitable investment.

By the end of the ten years which you have to pay for the land, it will have increased in value 500 per cent.

It is selling rapidly. Everyone who sees it praises it highly.

**CALL AND INVESTIGATE.**

If interested we will take you to look over the land.

Inform us of your real estate wants. We will be pleased to satisfy them

**GEO. H. CURREY**

HE WHO SELLS REALESTATE LA GRANDE, OREGON