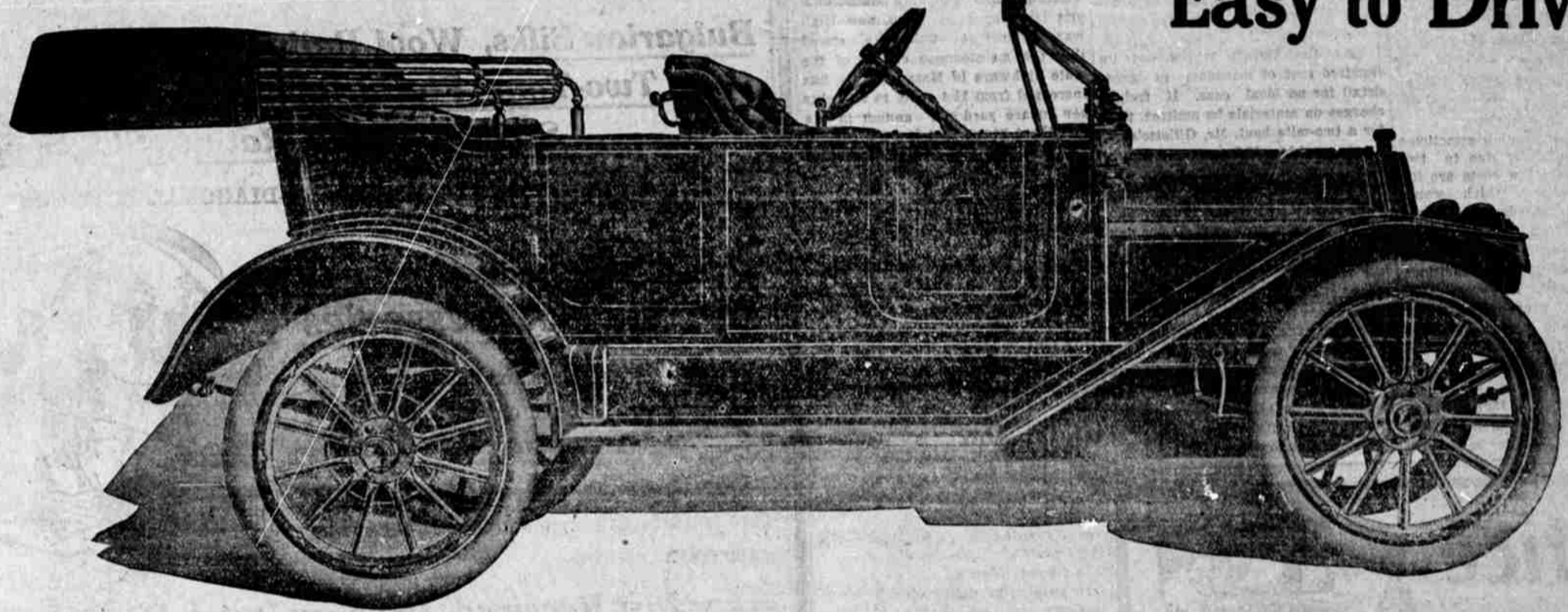


FREE THIS FULLY EQUIPPED \$1650 McIntyre

Self-Starting Cut Out Cranking

**Inside Control
Easy to Drive**



Five Passenger Touring Car Model F P '12. Most Up-to-Date Car in America.

Read These Specifications

APPEARANCE—Beautiful straight line, fore door body with genuine leather trimmings. All filling of genuine hair, hand stuffed, over high grade resilient springs. Visible parts of best enamel and nickel plate. A big genuine car with ample leg and luggage room for the whole family, and a long 114 inch wheel base to assure easy riding. Extra large radiator to guard against overheating.

CLUTCH—Multiple disk.

DRIVE—Nickel steel shaft through housing insuring ample lubrication.

AXLES—Front, drop forged I Beam section Rear Semi-Floating; Roller Bearing throughout.

WHEEL BASE—114 inch, just long enough to insure easy riding and not too long for easy handling in narrow streets and roads.

SELF STARTER—McIntyre Patent Forced charge of correctly mixed air and gasoline to each cylinder assuring even steady start same as with hand cranking. This scientifically correct starter then operates on throwing in the spark.

INSIDE CONTROL—All drive levers inside body. Easy access to driver's seat from either side of the car. Sight oil feed in the dash, also self starter.

RADIATOR—Honeycomb cellular type extra large.

SPRINGS—Front 40 in. semi-elliptic, Rear 46 inches. 3-4 elliptic.

WHEELS LARGE—Large Hickory hand split 34 in. in diameter with demountable rims.

TREAD—56 inch.

ENGINE—T head type, bore 4 in., stroke 5 in., 4 cylinders cast individually. All valves and push rods enclosed from dirt.

IGNITION—DUAL system, Magneto and Batteries magneto guaranteed for life.

LUBRICATION—Constant level by pump.

TRANSMISSION—Selective type, sliding gear three speeds forward, one reverse. Made of finest nickel steel subjected to repeated heat treatment.

STEERING GEAR—18 inch wheel; worm and sector type adjustable.

EQUIPMENT—Two gas and three oil lamps finished in nickel and enamel. Full kit of tools and self starter, which is regular equipment on all 4 cylinder McINTYRE pleasure cars, top, windshield and speedometer.

BRAKES—Both internal contracting and internal expanding on rear wheels.

FREE To our Customers and Subscribers a McIntyre Model F P '12, 40 h.p. Automobile. Enter now and become a candidate for this machine

RULES OF THIS CONTEST.

- 1—No name of contestant will be known.
- 2—No name of contestant will be published.
- 3—Every contestant gets 5,000 votes to start with.
- 4—Every contestant gets a number.
- 5—Standing of contestants published weekly.
- 6—Votes MUST be recorded every Wednesday to count.
- 7—Votes are good for record ONLY in week in which they are given out.

- 8—Votes MUST NOT be written on.
- 9—Tie your votes in packages, with contestants' number on top slip, total number of votes each package contains, and signature of the party depositing votes. (This is imperative.)
- 10—Votes are transferable ONLY before recording.
- 11—No contestant will be allowed to vote for another contestant.
- 12—Contestants not voting for themselves will be dropped.

- 13—Be careful in counting your votes. Vote packages reading greater number of votes than the package actually contains will be thrown out.
- 14—Watch your standing each week, as you have only one week after each report comes out to correct an error, as votes are all destroyed the second week after the report comes out.
- 15—Votes must be taken to the store giving them out and deposited for record each week. Merchants who are running this contest will stamp their respective names on each and every ballot. See that this is done at time votes are given out.
- 16—THE LA GRANDE OBSERVER is the only paper in La Grande publishing the official count each week.

LA GRANDE OBSERVER

HENRY & CARR, Furniture...A. V. ANDREWS, Gent's Furnishings...F. L. LILLY, Hardware...O. E. SILVERTHORN, Druggist, La Grande, Oregon.