

NOTICE OF DELINQUENT TAXES.

(Continued from Page Three.)

thence N. 21 rods, W. 1 rod, S. 21 rods, E. 1 rod to beg., also Beg. 40 rods N. of SE cor. of SW 1/4 NW 1/4, Sec. 15, Tp. 1, N. R. 39, E. W. M., thence W. 12 rods, S. 15 rods, E. 12 rods, N. 15 rods to beg. 9.79 Kellogg, Geo. E., SE 1/4, NW 1/4, Sec. 22, SE 1/4 SW 1/4 and SW 1/4 SE 1/4, Sec. 15, Tp. 1, S. R. 40, E. W. M. 16.50 Kellogg & Parent, NE 1/4 Sec 22 W 1/2 NW 1/4 and W 1/2 SW 1/4, Sec. 23, Tp. 1 S. R. 40, E. W. M. 16.50 Keown, Jno., com. 24 rods W. of SE cor. of SW 1/4 NE 1/4, Sec. 16, Tp. 1 N. R. 39, E. W. M., thence W. 25 rods, N. 40 rods, E. 25 rods, S. 40 rods to beg. 12.37 Kimbrell, J. W., lots 6, 7 and 8, block 17, South Elgin 3.9 Kohn, C. H., E 1/2 of lot 2, North side of Main St., Elgin 5.1 Kelly, Thos., Est., com. at SE cor. of Sec. 29, Tp. 2 S. R. 38, E. W. M., thence N. 8.76 chas., S. 50 minutes, W. 15.45 chas., E. 12.5 chs. to beg. 17.57 Keltz, S. V., lots 10 to 16, block 25, Williamson's Add. to La Grande 35.29 Kesler, Jno., lot 6, block 2, Home Investment Add. to La Grande 8.75 Knut, Hennings, S 1/2 NW 1/4, and NE 1/4 SW 1/4, Sec. 22, Tp. 5 S. R. 38, E. W. M. 3.05 Kingsford, Edw., com. at a point 312 feet E. of SW cor. of NW 1/4 of Sec. 18, Tp. 4, S. R. 40, E. W. M., thence E. 90 feet, N. 660 feet, W. 90 feet, S. 660 feet to beg. 31.45 Lane, Walter, com. at a point 1760 feet, N. and 952 1/2 feet W. of SW cor. of Sec. 5, Tp. 3, S. R. 38, E. W. M., thence S. along W. line of O. W. R. & N. railroad, to N. line of O. W. R. & N. railroad, then S. along O. W. R. & N. railroad of Way, to a point 40 feet E. of block 11, Williamson's Add. to La Grande, then N. to a point 101 9-10 feet due W. of place of beg., then E. to beg. 2.50 Latiker, S. A., lot 2, block 4, Arnold & Dray's Add. to La Grande 2.28 Lineberger, Jos., SW 1/4, Sec. 14, Tp. 4 S. R. 38, E. W. M. 7.28 Logan, Ray, lots 1 and 2, block 117, and 55 feet by 70 feet off E. end of lot C, Chaplin's Add. to La Grande 328.00 Long, Jos., lots 1 and 2, block 60, Riverside Add. to La Grande 4.51 Lewis, Ed., Est., SW 1/4 NE 1/4, SE 1/4 NW 1/4, E 1/2 SW 1/4, W 1/2 SW 1/4, E 1/2 E 1/2, Sec. 19, W 1/2 SW 1/4, SE 1/4 SW 1/4, SW 1/4 SE 1/4, Sec. 20, NW 1/4 NE 1/4 and N 1/2 NW 1/4, Sec. 29, in Tp. 5 S. R. 39, E. W. M. 101.84 Leslie, J. M., SE 1/4 NE 1/4 and E 1/2 SW 1/4 NE 1/4, Sec. 21, Tp. 1, N. R. 38, E. W. M. 7.42 Lewis, C. H., lots 1 to 12, block 11, Imbler 8.60 Lee, Mrs. M. E., S 1/2 SW 1/4, N 1/2 S 1/2, SE 1/4 SW 1/4 and SW 1/4 SE 1/4, Sec. 10, Tp. 5, S. R. 40, E. W. M. 34.16 Loveless, A., com. 260 feet N. of NE. cor. of lot 2, in Lewis' Add. to North Union, thence N. 91 feet, W. 260 feet, S. 51 feet, E. 200 feet to beg., also E 1/2 of block 12, Swackhammer's Add. to Union 37.06 Lomax, Leroy, beg. 60 rods W. of NE cor. of SW 1/4 NE 1/4, Sec. 16, Tp. 1 N. R. 39, E. W. M., thence S. 40 rods, W. 20 rods, N. 40 rods, E. 20 rods to beg. 5.63 Leight, Alice H., lot 15 Thronson's Fruit Colony 19.38 Lee Bros., S 1/2 SW 1/4, Sec. 17 and SE 1/4 SE 1/4, Sec. 18, Tp. 6 S. R. 39, E. W. M. 56.70 Larson, Laura B., S 1/2 NW 1/4, NW 1/4 SW 1/4, Sec. 33, and NE 1/4 SE 1/4, Sec. 32, Tp. 5 S. R. 41, E. W. M. 8.00 Lay, J. C., S 1/2 NE 1/4 and N 1/2 SE 1/4, Sec. 14, Tp. 6 S. R. 41, E. W. M. 10.88 Lilly, P. A., com. 10 rods E. of NW cor. of SW 1/4, Sec. 8, Tp. 2 S. R. 39, E. W. M., thence E. 102 2-5 feet, S. 102 2-5 feet, W. 102 2-5 feet, and N. 102 2-5 feet to beg., also NW 1/4 SW 1/4, Sec. 8, Tp. 2 S. R. 39, E. W. M. 36.50 Logan, Willis, lot 2, block X, McDaniel's 3rd Add. to Cove 7.52 Loomis, Mrs. Willis, 25 acres in NW 1/4 NW 1/4, Sec. 3, Tp. 4 S. R. 39, E. W. M. 18.75 Land, Joseph, NW 1/4, Sec. 10, Tp. 2 S. R. 41, E. W. M. 4.69 Land, Jhuac, NE 1/4, Sec. 18, Tp. 1 S. R. 40, E. W. M. 12.95 Lewis, J. W., NE 1/4 SW 1/4, NW 1/4 SE 1/4, E 1/2 SW 1/4, and E 1/2 NW 1/4, Sec. 18, Tp. 1 S. R. 40, E. W. M. 11.46 Lloyd, M. F., SW 1/4, Sec. 15, Tp. 2 N. R. 39, E. W. M. 14.26 Law, Wm., W 1/2 SW 1/4, SE 1/4 SW 1/4, Sec. 29 and NE 1/4 NW 1/4, Sec. 25, Tp. 2 S. R. 37, E. W. M. 19.05 Lawrence, Jerome, com. 10 rods N. of SE cor. of E 1/2 SW 1/4, Sec. 21, Tp. 2 S. R. 38, E. W. M., thence W. 22 6-7 rods, S. 14 rods, E. 22 6-7 rods, thence N. 14 rods to beg. 4.0 La Grande Investment Co., lot 2, block 58, Chaplin's Add. to La Grande 9.03 Mars, J. L., lots 1 to 5, block 26, Williamson's Add. to La Grande 7.17 Matott, J. A., lots 3 and 4, block

1, Helsom's Add. to La Grande, and lots 11 and 12, block 4, D. La Grande 58.10 Mays, Olive A., lots 5 to 9, block 29, Predmore's Add. to La Grande 11.27 Mays, Mrs. Arthur, lot 6, block C, New Haven Add. to La Grande 21.94 Merrill, E. H., W 1/2 of lot 1, block F, Coggan's 2nd Add. to La Grande 3.59 Millering, Katie, lots 3 to 6, block 95, Chaplin's Add. to La Grande 86.92 Miller, G. C., NE 1/4, NW 1/4 and SE 1/4, Sec. 35, Tp. 5 S. R. 39, E. W. M. 16.32 Murphy, E. A., N 1/2 of lot 8, block 26, North Powder 3.57 Murphy, S. W., lot 6, block 38, North Powder 1.47 Merritt, C. H., SE 1/4, Sec. 34, Tp. 1, S. R. 40, E. W. M. 5.76 Mesupalus, Geo., lots 1 to 4, block 9, Sommer's 2nd Add. to Elgin 1.53 Morelock, John W., lots 11 and 12, block 43, Hindman's add. to Elgin and lot 1, block 4, Sommer's Add. to Elgin 3.19 Moon, Mrs. Jane Dray, a piece of land in SW cor. of out lot 3, original La Grande, also lots 7 and 8, block 1, D. La Grande 8.61 Moon, O. W., NE 1/4, Sec. 32, Tp. 3 S. R. 38, E. W. M. and lot 2, in block 5, lots 1 and 2, the W. 10 feet off lots 3 and 4, all of lots 5 and 6, the E. 52 feet off of lots 3 and 4, all of 7, 8 and 9, block 10, Arnold & Dray's Add. to La Grande 121.21 Miller, J. H., beg. 16 rods N. of NW cor. of NE 1/4 SW 1/4, Sec. 15, Tp. 3, S. R. 40, E. W. M., thence E. 20 rods, N. 8 rods, W. 20 rods, S. 8 rods to beg. 8.50 Miller, F. M., Com., 38 rods N. of NW cor. of NE 1/4 SW 1/4, Sec. 15, Tp. 3 S. R. 40, E. W. M., thence E. 20 rods, S. 8 rods to beg., also SW 1/4 NE, Sec. 13, Tp. 3 S. R. 40, E. W. M. 27.88 Murchison, Kate, lot 24 and E. 10 feet of lot 25, block 123, Chaplin's Add. to La Grande 25.42 McDonald, M., lots 1 to 10, block 4, Allice 1.65 McDaniels, Mrs. F. J., lots 3 to 5, block K, McDaniels' 2nd Add. to Cove 8.16 McCully, David, Est., lot 27, M. A. Stevenson's Add. to Elgin 10.20 McClure, Edith A., N 1/2 NW 1/4, Sec. 3, Tp. 4 S. R. 38, E. W. M., S 1/2 SW 1/4, S 1/2 NE 1/4, SE 1/4 NW 1/4, SE 1/4 SW 1/4, Sec. 34, Tp. 3 S. R. 38, E. W. M. 21.90 McClure, Frank, all of N 1/2 NE 1/4 (less a strip on S. side and road on E. side, 20 feet wide), Sec. 3, Tp. 4, S. R. 38, E. W. M. 24.00 McGrath, Walt, lots 9 and 10, block 18, North Powder 96 McLaren, J. R., lots 6 to 10, block 21, North Powder 5.25 McLaren & Oliver, lot 8, block 29, and lot 3, block 22, North Powder 1.26 McLaren, Eliza E., lots 6 to 10, block 19, North Powder 12.92 McDowell, C. D., Est., lot 1, block 5, Shaw's Add. to Summerville 5.88 McRae, Bell, lots 1 to 4, block 5, Shaw's Add. to Summerville 9.87 McElroy, Jos., S 1/4 N 1/2 SW 1/4 and N 1/2 S 1/2 SW 1/4, Sec. 6, Tp. 4, S. R. 40, E. W. M. 69.24 McMasters, Sam'l., Est., com. 208 1/2 feet w. of SW cor. of block 5, Hannah's Add. to West Union, thence N. 373 feet, W. 116 4-5 feet, S. 373 feet, and E. 116 4-5 feet to beg. 29 Mitchell, M. W., E 1/2 SE 1/4 SW 1/4, SE 1/4, Sec. 34, and W 1/2 SW 1/4, Sec. 35, Tp. 2 S. R. 40, E. W. M., the NW 1/4 NW 1/4, Sec. 2, NE 1/4 NE 1/4 and W 1/2 NE 1/4, Sec. 3, Tp. 3 S. R. 40, E. W. M. 687.00 Maxwell A., SW 1/4 NE 1/4, W 1/2 SE 1/4 and SE 1/4 SE 1/4, Sec. 4, Tp. 2 N. R. 39, E. W. M. 11.20 Mays, Mrs. H. J., lots 1 to 8, block 58, Hindman Add. to Elgin 40.81 Mays, H. J., lots 5 to 8, block 53, Hindman Add. to Elgin 6.12 Milne, Frank, Est., S 1/2 NW 1/4 and W 1/2 NE 1/4, Sec. 9, Tp. 1 N. R. 40, E. W. M. 8.25 Norvall, T. B., lots 8 to 14, block 5, North Elgin 1.27 Nelderer, Emil, lot 12, block 47, Chaplin's Add. to La Grande 6.50 Nelson, Lucy, lot 5 and E 1/2 of lot 6, block 2, D. La Grande 3.08 Nelson, Chris., lots 7 and 8, block 4, Arnold & Dray's Add. to La Grande 15.99 Noble, W. F., lot 16, block 2, Coggan's 2nd Add. to La Grande 11.77 Noyes, Mo'he, lot 2, block 100, Chaplin's Add. to La Grande 50.29 Needham, B. M., com. at SE cor. of NW 1/4 of Sec. 12, Tp. 1 S. R. 38, E. W. M., thence W. 76 rods, N. 12 rods, 5 feet, 9 1/4 in. E. 26 rods, and S. 12 rods, 5 feet, 9 1/4 in. to beg. 5.50

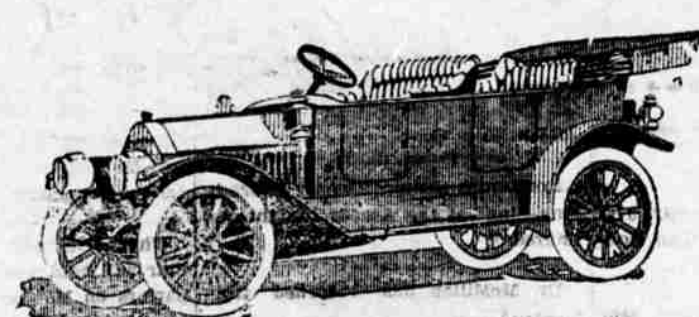
Neaderer, Conrad, W 1/2 NE 1/4 NE 1/4 SW 1/4, NW 1/4 SE 1/4, and 5 rods off E. side of the NW 1/4, in Sec. 25, and SW 1/4 SW 1/4, Sec. 24, Tp. 1, N. R. 38, E. W. M. 21.28 Nicholson, M. A., NE 1/4 NE 1/4, SE 1/4 NE 1/4, E 1/2 SW 1/4 and NW 1/4 NW 1/4, Sec. 7, Tp. 4 S. R. 40, E. W. M. 57.00 Nodine, Fred, Jr., com. at the NE cor. of NW 1/4, Sec. 19, Tp. 4 S. R. 40, E. W. M., thence E. 80 rods, S. 40 rods, W. 80 rods and N. 40 rods to beg. 27.20 Nyhard, S., com. 80 rods S. of NE cor. of SW 1/4, Sec. 7, Tp. 4 S. R. 40, E. W. M., thence W. 40 rods, E. 28 rods E. 40 rods, and N. 28 rods to beg. 7.20 Nelson, D. W., NE 1/4 NW 1/4, Sec. 9, Tp. 6 S. R. 38, E. W. M. 1.70 Neely, H. C., W 1/2 NW 1/4, Sec. 9, NE 1/4 NE 1/4, Sec. 8, and SE 1/4 SE 1/4, Sec. 5, Tp. 4, S. R. 41, E. W. M. 11.20 Nihart, Silas, NW 1/4 SW 1/4, Sec. 1, SE 1/4 NE 1/4 and NE SE 1/4, Sec. 2, Tp. 5, S. R. 40, E. W. M. 9.00 Oison, Cornelius, E 1/2 SW 1/4, NW 1/4 SW 1/4, SW 1/4 NW 1/4, Sec. 12, Tp. 5 S. R. 38, NW 1/4, and SW 1/4, Sec. 34, Tp. 5, S. R. 39, E. W. M., the NE 1/4 NW 1/4, NW 1/4 NW 1/4 NE 1/4, Sec. 22, Tp. 6 S. R. 39, E. W. M., and lots 1 to 5, block 41, North Powder 68.38 Oliver, E. W., lot 6, block 9, Union 24.65 Plass, Sophia, lots 1 to 4, block 35 and 1 to 4, block 34, Allice 7.18 Plass, R. C., lot 26, block 151, Chaplin's Add. to La Grande and lot 4, block 2, Honon's Add. to La Grande 45.12 Playle, Celia, lots 1 to 4, block 37, and lots 1 to 3, block 38, Allice 1.24 Pentecost, Clara, lots 14 and 15, block 31, Predmore's Add. to La Grande 4.10 Perry, L. R., lots 19 and 20, block 19, Predmore's Add. to La Grande 20.91 Predmore, John, Est., com. 79 1/4 feet E. of SW cor. block 9, town of Oro Dell, then E. 60 feet, N. 200 feet, W. 85 feet, S. 100 feet, E. 25 feet, S. 100 feet to beg. 1.26 Parker Bros., lot 1, block 27, North Powder 21.00 Pearson, Henry, SW 1/4, NW 1/4, SE 1/4, less 12 acres, NW 1/4 NE 1/4 SE 1/4, and NW 1/4 SW 1/4 SE 1/4, Sec. 28, Tp. 6 S. R. 39, E. W. M. 59.60 Pearson, H. L., lots 1 and 2, block 7, North Powder 7.87 Parker, Kate, lots 7 to 11, block 23, Imbler 4.50 Pentecost, Est., I. W., SW 1/4 less 17 acres, Sec. 26, Tp. 1 N. R. 39, E. W. M. 8.62 Pentecost Est., W. R., S 1/2 NE 1/4 NE 1/4 SW 1/4, Sec. 26, Tp. 1, N. R. 38, E. W. M. 2.10 Peterson, J. E., lots 1, 2, 7 and 8, block 18, West Union 36.55 Phelan, J. S., N. 70 feet off lot 5, block 1, West Union 3.40 Pursell, S. A., NW 1/4 NE 1/4, Sec. 13, Tp. 1 N. R. 38, E. W. M. 11.24 Portland Co., W 1/2 and E 1/2 Sec. 36, Tp. 2 S. R. 40, E. W. M. 14.40 Potter, C. C., SW 1/4 NE 1/4, Sec. 50, Tp. 2 S. R. 37, E. W. M. 1.50 Page, John E., lots 5 to 8, block 12, Chaplin's Add. to La Grande 50.22 Plaster, B. R., lots 5 to 8, block 2, West Union 24.82 Peck, Louie W., com. 24 rods W. of SE cor. of SW 1/4 NE 1/4, Sec. 15, Tp. 3 S. R. 40, E. W. M., thence W. 20 rods, N. 40 rods, E. 20 rods, and S. 40 rods to beg. 16.49 Frillman, W. L., 65 acres in SW 1/4 Sec. 2, N 1/2 NW 1/4 S 1/2 NE 1/4, SE 1/4 NW 1/4, and NW 1/4 SE 1/4, Sec. 11, in Tp. 5 S. R. 40, E. W. M. 23.93 Page, Cal., lots 1 to 4, block 6, Sommer's 2nd Add. to Elgin 5.10 Parce, F. A., SE 1/4 NW 1/4, Sec. 9, Tp. 2 N. R. 39, E. W. M. 4.80 Parent, Kate, NW 1/4, Sec. 26, Tp. 1, S. R. 40, E. W. M. 8.25 Parson, Wm. Heirs, lots 5 and 6, block 14, Summerville 84 Plass, J. B., SW 1/4, Sec. 18, Tp. 2 N. R. 40, E. W. M. and E 1/2 SE 1/4, Sec. 13, Tp. 2 N. R. 39, E. W. M. 28.92 Plass, Giles, lots 1 to 13, block 20, North Elgin 3.32 Peterson, E. D., lots 1 and 2, block 6, Hilgard 1.65 Peyster, Allen, lot 1, block 29, Williamson's Add. to La Grande 1.85 Peyster, A. J., lots 2 to 4, block 135, Chaplin's Add. to La Grande and 10 and 11, block 3, Predmore's Add. to La Grande 31.36 Robinson, C. F., lots 5 and 6, block 11, Sun. Plat to Grandy's 2nd Add. to La Grande 8.20 Robinson, J. D., lot 4, block 148, Chaplin's Add. to La Grande 4.51 Rogers, A. E., lot 4, block A, New Haven Add. to La Grande 21.73 Risor, Stella, lots 1 to 3, block 23, North Powder 15.01 Risor, A. L., com. 1250 feet N. of A. L. com. from S. line N 6

rods, 4 feet W. of SE. cor. of W 1/2 SE 1/4, Sec. 20, Tp. 1 S. R. 39, E. W. M., thence E. 208 1/2 feet, then in a S. West course 208 1/2 feet, then W. 208 1/2 feet, then along E. side of O. W. R. & N. Rt. of Way 208 1/2 feet to beg. 13.90 Rachan, G. W., 70 acres in N 1/2 SE 1/4, Sec. 19, Tp. 1 N. R. 39, E. W. M. 26.58 Robinson, Cicero, lots 1, 2, 7 and 8, block 4, West Union 57.46 Richardson, Herbert E., NW 1/4, Sec. 9, Tp. 3 N. R. 40, E. W. M. 7.00 Romig, J. K., lots 1 to 3, block 10, Romig's Add. and lots 5 and 6, block 8, Wisdom's Add. to La Grande 14.34 Rowan, Alpha A., com. at a point 70 rods W. and 46 rods 11 feet N. of SE cor. of NW 1/4, Sec. 18, Tp. 4 S. R. 40, E. W. M., thence N. 26 2-3 rods, W. 18 rods, S. 26 2-3 rods, E. 18 rods to beg. 37.40 Ruckman, Elinor, lots 1 to 4, block 36, Allice 66 Ruckman, G. W., SW 1/4 NW 1/4, Sec. 10, S 1/2 NE 1/4, SE 1/4 NW 1/4, SE 1/4 and E 1/2 SW 1/4, Sec. 9, and NW 1/4, Sec. 15, Tp. 2 S. R. 39, E. W. M. 415.56 Reavis, W. C., SE 1/4 SW 1/4, and SW 1/4 SE 1/4, Sec. 32, Tp. 5 S. R. 42, E. W. M. 4.48 Richards, Dudley, lots 11, 12 and 13, block L, McDonald's 2nd Add. to Cove 19.72 Rundall, John, NW 1/4 SW 1/4, Sec. 15, N 1/2 NW 1/4 and N 1/4 SE 1/4 NW 1/4, Sec. 22, Tp. 4 S. R. 40, E. W. M. 19.35 Roberts, J. N., NE 1/4 NE 1/4, E 1/2 NW 1/4 NE 1/4, S 1/2 NE 1/4, Sec. 33, Tp. 2 N. R. 39, E. W. M. Robertson, Anna M., lot 6, block 3, Elgin 10.33 Rose, W. E., lots 22 to 24, and lots 1 to 3, block 39, Hindman's Add. to Elgin 3.70 Reilly, J. W., lots 17 to 20, block 2, Hilgard 3.30 Reavis Est., L. D., SE 20 feet of lot 2, and all of lot 3, the NW 10 feet of lot 4, block 104, Chaplin's Add. to La Grande 78.11 Reed, John D., a part of out lot No. 1, La Grande 31.77 Rinehart, H. C., SE 1/4 NW 1/4, Sec. 21, and 2 1/2 acres in NW 1/4 SW 1/4, Sec. 36, Tp. 1 N. R.

38, E. W. M., and lot 8, block 15, Summerville 14.36 Robbs, Mrs. S. J., W 1/2 NW 1/4 and NW 1/4 SW 1/4, Sec. 15, Tp. 2 S. R. 37, E. W. M., and lot 2, block 48, Riverside Add. to La Grande 11.04 Smith, T. E., lots 1 to 8, block 13, North Elgin 20.02 Spencer, Hattie B., Est., NW 1/4, Sec. 27, Tp. 1 S. R. 40, E. W. M. 8.25 Spencer & Co., H. D., NE 1/4 SW 1/4, Sec. 21, Tp. 1 N. R. 39, E. W. M., lots 7 and 26, M. A. A. Stevenson's Add. to Elgin—lots 1 to 24, block 22, and 1 to 23, block 35, 7 to 9, 11 to 14, and 16 to 18, block 36, and 1 to 12, block 37, all in Hindman's Add. to Elgin 258.33 Spencer, H. D., NW 1/4, Sec. 15, Tp. 3 N. R. 39, E. W. M., and NE 1/4, Sec. 27, Tp. 1 S. R. 40, E. W. M., and lots 13 to 18, block 23, Hindman's Add. to Elgin 34.89 Salling, P., NE 1/4 SE 1/4, Sec. 30, Tp. 3 S. R. 35, E. W. M. 1.50 Siegel, W. S., E 1/2 NE 1/4, NE 1/4 SE 1/4 and SW 1/4 NE, Sec. 23, Tp. 2 S. R. 37, E. W. M. 6.46 Smith, R. H., Com. 245 feet N. of SW cor. of SW 1/4 NE 1/4, Sec. 34, Tp. 2 S. R. 34, E. W. M., thence N. 23 feet, E. 120 feet, S. 23 feet, W. 120 feet to beg. 17.22 Stone, J. B., W 1/2 E 1/2 NE 1/4 SE 1/4, Sec. 33, Tp. 2, S. R. 38, E. W. M. 34.00 Smith, J. E., E 1/2 SE 1/4, Sec. 6, Tp. 2, S. R. 36, E. W. M. 2.40 Swauger, S. W 1/2 SW 1/4, Sec. 3, Tp. 2 S. R. 35, E. W. M. 3.00 Salsberry, E. D., SW 1/4, Sec. 12, Tp. 3 S. R. 38, E. W. M. 76.16 Sanders, S. D., lots 22 and 23, block 1, Pleasant Home Add. to La Grande 4.51 Schofield, Maud, SW 1/4 NW 1/4, and W 1/2 SW 1/4, Sec. 4, Tp. 4 S. R. 37, E. W. M. 7.68 Schaffer, Alice, et al, lot 5, block 2, D St., La Grande 2.66 Schaffer, O. V., NW 1/2 lot 8, and SE 1/4 of lot 7, block 111, and all of lot 4, block 125, Chaplin's Add. to La Grande 38.75 Severson, P. W., lots 1 and 6, block 5, Home Investment Add. to La Grande 5.37 Simmons, Mrs. Emma, NW 1/4

NW 1/4, Sec. 19, Tp. 3 S. R. 39, E. W. M. 8.83 Slate, D., lot 3, block 2, Home Investment Add. to La Grande 3.75 Snider, Manuel, lots 3 and 4, block 31, Chaplin's Add. to La Grande 25.01 Snider, Mrs. Etta M., lot 24, block 138, Chaplin's Add. to La Grande 11.89 Spain & Prescott, SW 1/4 NW 1/4, Sec. 24, Tp. 5 S. R. 40, E. W. M. 1.60 Smart, H. A., com. 25 rods N. of SW cor. of SW 1/4, Sec. 23, Tp. 3 S. R. 40, E. W. M., thence E. 20 rods, 12 3-4 feet, N. 6 5-100 rods, E. 25 rods, 12 3-4 feet, N. 8.95 rods, W. 12 rods, 6 feet, N. 12 feet E. 25 feet, N. 11 rods, 4 feet, 6 in., W. 68 rods, 8 feet, 6 in., then in a S. Easterly direction along Co. road 36 rods, then E. E. 6 rods, 7 feet to beg. 20.40 Shintoffer, L., beg. 12 rods W. of NE cor. of SW 1/4 NE 1/4, Sec. 16, Tp. 1 N. R. 39, E. W. M., thence W. 14 rods, S. 40 rods, E. 14 rods, N. 14 rods to beg., also lots 3 and 4, and S 1/2 NW 1/4 of Sec. 4, Tp. 2 N. R. 39, E. W. M. 19.85 Shockey, Maud, lots 13 to 16, block 70, Hindman's Add. to Elgin 12.24 Sims, Frank L., SW 1/4 SW 1/4, Sec. 14, E 1/2 SE 1/4 and SE 1/4 NE 1/4, Sec. 15, Tp. 3 N. R. 40, E. W. M. 7.00 Stevens, Orlando, lot 4, block 7, lots 1 to 6, block 8, Home Investment Add. to La Grande 32.50 Stoddard, J. B., com. 72 rods, S. of NE cor. of SE 1/4, Sec. 32, Tp. 2 S. R. 38, E. W. M., thence W. 110.76 rods, S. 820 rods, then S. 14 min. and W. 52.6 rods, then S. 70 min., then E. 24 rods, then S. 82 min., then E. 20 rods, then S. 8 rods, then NE 82 rods, then N. 58 rods to beg., also com. 37 feet W. of NE cor. of tract A, Coggan's 2nd Add. to La Grande, thence S. to O. W. R. & N. Co.'s Rt. of Way, then NW along said Rt.

(Continued on page seven.)



Maxwell

It means the most possible to buy in Automobile value for the money THIS IS A PROVEN FACT

Leighton, Agent

Ask For Demonstration.