

# LATEST SPORTING NEWS

## COVE GIRLS DEFEATED BY FAST LOCAL CO-ED QUINTET

Cove co-ed players were given a decisive drubbing last evening in the high school gym when the La Grande high school girls defeated their worthy adversaries by a score of 15 to 12. The narrowness of the margin between scores was due to a well connected burst of speed by the visiting players at the very last of the game and though it reduced the lead, did not materially jeopardize the outcome of the contest.

Miss Olive Massee started the scoring for La Grande and with three goals on a free throw registering seven points before her colleague got her eye working right and soon after the second semester had got under way Miss Calista Love commenced shooting and scored four field goals in rapid succession. With an occasional field goal from the Cove frontier the game was an exciting one throughout. The Cove players are superior in many ways to the locals in team work and general ability to manipulate the ball on the floor but did not finish a play and lacked accuracy in shooting baskets. While La Grande's team work was ragged it accomplished more in that the scores were registered—the real objective point.

The Cove aggregation is strong, fast and agile—especially so is this true with Volma Burke the center, who was pitted against Miss Topp for La Grande though Miss Topp unquestionably outplayed her opponent it was by sheer effort for Miss Burke stood the brunt of all the floor work by the Cove team. Miss Kelley and Miss Conley the Cove guards kept La Grande's forwards covered closely but, in the first half, Miss Massee was able to sneak away and negotiate a tally with

some regularity while Miss Love in the second half was able to do the same thing.

Miss Runa Bacon and Miss Ruth Cotner and Miss Ida Billings, the latter playing but a few minutes, were matches for their forwards and their long throws to the La Grande forwards were both accurate and difficult. Miss Lulu McNeill, the captain of the Cove team is an aggressive player and with Miss Burke showed much ability at combination plays. But both her and Miss Anderson the other forward were closely guarded by the home duo and Cove's inability to shoot was largely due to the leech-like guarding.

The La Grande team is well balanced. The one deserving particular mention, if it is just to the other four who played a hard and clever game as well, is Miss Topp, who proved herself a player that few halls could cross. Her accuracy in catching and handling the ball and her ability to jump, coupled with plenty of energy, make her an exceptionally valuable center.

Prof. Turner of Co. and Prof. Crum of La Grande officiated with perfect satisfaction to everyone and the game was clean and free of ill will throughout.

The lineup:

La Grande	Cove
Olive Massee . . . . . F . . . .	Lulu McNeill
Calista Love . . . . . F . . . .	Mae Anderson
Anna Topp . . . . . C . . . .	Volma Burke
Runa Bacon . . . . . G . . . .	Bernice Kelley
Ruth Cotner . . . . . G . . . .	Effie Conley
Ida Billings . . . . . G . . . .	Susie McNeill

Points for La Grande: Miss Massee, three baskets and one free throw; Miss Love four field goals.

**JOE CHOYNSKI.**  
Former Heavyweight Pugilist to Direct Pittsburg Athletic Club.



Photo by American Press Association.

## ROOKS CLIMB TO FAME

### DEFEAT THEIR ENEMIES THE SOPHS LAST NIGHT

Game Exciting and New Material Uncovered by the Contest.

Freshmen own the earth today—they walk the streets and roam the campus and school corridors with the strut of a peacock for last night the quintet representing the "Rooks" of the local school downed their rivals.

## TRACK TEAM IS INVITED

### BOTH O. A. C. AND U. OF C. BIDS TO LOCALS.

Whitman Invitation Yet to Come—Find Array of Trips in Sight.

Invitations have been received by the La Grande high school to enter teams in the Corvallis and Eugene meets in May. With one presumably coming from Walla Walla, three splendid trips will be in store for about four of the local team and should act as an incentive to draw out many candidates for the squad. The merits of the team is a matter still too early to discuss with any degree of certainty but there is a positive attraction in the way of long trips. In addition there is the Ontario meet.

Both the Oregon meets will attract people from all over the state and as the number from each school is limited there will be more equality than at the Walla Walla meets, where in years past, any number could attend by paying their own way. It is reported that Whitman will inaugurate a similar ruling this year.

As to the Oregon meets, the schools are in competition and there is going to be the very best sort of treatment accorded the athletes at both schools.

the Sophomores in a game played between halves of the girls game. The score was sufficient to be decisive, 23 or some similarly appropriate figure as compared by 14 to 15 by the Sophs. The game was a speedy one and in addition to supplying plenty of amusement gave a panoramic view of what

(Continued on Page 7.)

## LOCAL SPORTLETS, COMMENT AND THE LIKE

Bondsheader and Bob Jones, forwards, M. Barnes, center, William Jones and H. Hill, guards, comprise the Elgin team which Sommerville defeated last week by a decisive score. This is Elgin's first team of basketball players in several years and indications are that the sport will become much more popular next year.

"Dutch" Rose, a 165 pounder, who wants to wrestle for a \$100 side bet, is still in the city but unable to find any takers. He does not draw any color lines and will give or take ten pounds. He can be reached by addressing Box 873, La Grande, Oregon.

Lovers of speedy bag punching are overlooking an opportunity if they have not seen Miss Gordon at work. In addition to be able to produce the buzzing, she carries medals from far and near and her reputation as world's champion is undisputed up to date. She has contested in practically every corner of the sporting world and always came out ahead.

La Grande's High School girls' team came nearer to the championship of Eastern Oregon last night when Union's girls defeated the Baker girls 10 to 6 at Union. This gives La Grande undisputed rights, practically on the East side and the Pendleton girls are the only ones left.

This lethargy on the part of baseball fans is going to cost the city the loss of a team in any league in this section of the state. Other towns are already laying their plans for the coming season while La Grande is idle. Talk is even a scarce article these days.

An "Indian" motor cycle, four horse power, has arrived for the Dittebrandt garage. The machine has been given a work out and runs like a house afire. All the automobiles in town try to "outrun" it but so far the thing has shown too much speed.

Jay Millering and Cecil Holton, captains of the local high school track team have been elected captain and manager respectively of the high school team.

Union's second boys team wallowed Cove's second team last night 23 to 2.

## WITH THE BOXERS.

An effort to start boxing contests in Indianapolis, it is said, will be made about February 14.

Tommy Burns would like to match his "hope" Jack Lester against Carl Morris, the Oklahoma Bear Cat.

Al Kaufman says he will not meet Jack Johnson in a six round bout, but will sign up at any time for a British contest.

## BASEBALL NOTES

If Jake Stahl fails to report this spring, the Boston Red Sox may try out Tris Speaker at first base.

Chris Mathewson, who is appearing in vaudeville, says he hopes to become a sure enough regular kind of an actor some day.

President Murphy says that Cub failing to report and start with the team February 26, will have to pay his own traveling expenses.

If Hunter can make good at first base the Pirates will be able to show a great deal more class than they did last year.

Report from Washington has that Manager McAleer will shift "old" Conroy from third base to the outfield beginning with the coming season.

Miller Huggins of the St. Louis Nationals and "Owie" Bush of De

(Continue on Page Seven.)



HUDSON "33" TORPEDO, \$1350.00.

**BODY STYLES AND PRICES—**  
Touring Car, five-passenger . . . . . \$1250.00  
Pony Tonneau, four-passenger . . . . . \$1350.00  
Torpedo, five-passenger . . . . . \$1350.00  
Equipment includes three oil and two gas lamps, horn, tools, pump, Q. D. rims, gas generator, aluminum sheet metal throughout, aluminum foot boards, coat rack, foot rail, mats, etc.

**EQUIPMENT (Extra Charge)—**Mohair top, Prest-O-Lite tank instead of gas generator, and Duplex system ignition with famous Bosch High Tension Magneto, \$150.00 extra.

**COLOR—**Blue body with gray wheels.

**WHEEL BASE—**114 inches.

**TREAD—**Standard.

**MOTOR—**33 H. P. brake test. Four cylinders, cast en bloc, 4-inch bore and 4 1-2-inch stroke. Extra heavy crank shaft, 21-8-inch diameter. Very large bearings. Valves all on left side. Single jet, float feed, hot-water jacketed carburetor on right side, valve mechanism contained in dust proof oil-tight chamber. Water pump and magneto located in front of motor, both on single transverse shaft. Entire motor is very simple and free from wiring and exposed mechanism. Practically silent.

**VALVES—**Interchangeable nickel-steel, 2 inches in diameter, giving 1 3-4-inch opening in the clear.

**IGNITION (Standard)—**High tension batteries, through commutator and spark coil.

**IGNITION (Included with extra equipment as above or separately at \$80 extra)—**Bosch Duplex, high tension magneto, and single non-vibrating coil in connection with battery. Self-starting button and key-locked kick-switch on dash. Entire system absolutely accessible.

**LUBRICATION—**Constant level splash system, with reservoir beneath motor. Plunger pump operated from cam shaft, furnishes constant flow over motor gears and through sight feed on dash. Grease cups on all spring shackles. Every point requiring attention is easily accessible.

**COOLING—**Water circulated by centrifugal pump through vertical

## Condensed SPECIFICATIONS

tube radiator. Large fan in fly wheel.

**RADIATOR—**Vertical tube type, copper flanges.

**PUMP—**Centrifugal type, gear-driven, absolutely accessible.

**CONTROL—**Spark and throttle levers on top of steering wheel; accelerator pedal.

**GEAR—**3-4 to 1.

**CLUTCH—**Multiple-disc type, contained within fly-wheel.

**TRANSMISSION—**Selective type, three speeds forward and reverse. Direct drive on third gear. Heavy roller bearings. Transmission case bolted direct to rear of motor, assuring perfect alignment of crank shaft and clutch.

**BODY STYLES AND PRICES—**  
Roadster, two-passenger (with option of single rumble seat or 25 gallon gasoline tank) \$1,000.  
When double rumble seat is ordered without the following extra equipment the price is \$25.00 additional.  
Equipped with famous Bosch high tension magneto, Arden top, Prest-O-Lite tank, extra rumble seat for four passengers and Zig Zag wind shield if ordered at the time car is ordered, \$150.00. If not ordered with car, \$205.00.

**HORSEPOWER—**26 Brake test.

**WHEEL BASE—**100 inches.

**TIRES—**32 x 3 1-2 inches, front and rear.

**WEIGHT—**1800 pounds.

**MOTOR—**Renault type, 4-cylinder, cast en bloc, 3 3-4 inch bore and 4 1-2 inch stroke.

**TRANSMISSION—**Selective sliding gear type. Three speeds forward and reverse.

**FAN BACK OF RADIATOR COOLING SYSTEM—**Forced circulation splash system, vertical tube radiator, centrifugal water pump.

**AXLES—**Semi-floating rear; 1-Beam front.

**SPRINGS—**Semi and three-quarter elliptic front and rear respectively.

**GASOLINE CAPACITY—**Ten gallons.

**DRIVE—**Through single Spicer joint and bevel gears. Propeller shaft runs in torsion tube.

**REAR AXLE—**Floating type; nickel steel used in all moving parts. Annular ball and Hyatt roller bearings.

**BEARINGS—**Plain type in motor; roller in gear box; ball and roller in axles. Crank-shaft bearings: Front, 2 1-8 x 3 1-2 inches; rear 2 1-4 x 4 inches.

**BRAKES—**Double on rear wheels; improved leverage arrangement makes them easy and efficient. Drums 12 inches in diameter by 2 inches in width. Service brake, operated by foot pedal, external contracting. Emergency hand lever rake, internal expanding.

**FRONT AXLE—**Single piece, drop-forged I-beam section. Heat-treated 2 1-4 inches depth of section. Extra heavy at spring seats to withstand road shocks.

**SPRINGS—**Front, half-elliptic, 37 x 2 inches. Rear, three-quarter elliptic, 46 x 2 inches. Very flexible, assuring easy riding.

**WHEELS—**Artillery type, 34-inch full rounded spokes. Ten bolts in front wheels, which have 10 spokes; 12 spokes in rear wheels. Spokes 1 3-8 inch diameter.

**STEERING GEAR—**Irreversible worm and gear type—new improved design 18-inch wheel, aluminum web.



HUDSON "33" TOURING CAR, \$1250.00.

**TIRES (Standard)—**34 x 3 1-2 inch quick-detachable.

**TIRES (Extra)—**34 x 4 inch quick detachable, \$60 extra.  
34 x 4-inch Fisk Demountable, bolted on tires, or 34 x 4 inch Continental Demountable rims with standard tire equipment in place of 34 x 3 1-2 Q. D. tires, \$100 extra.

**TOOL BOX—**Located under bonnet on left side of motor.

**TANK CAPACITY—**14 gallons.

**WEIGHT, EMPTY—**Touring car, 2,250 lbs.; Pony Tonneau, 2,200 lbs.; Torpedo, 2,250 lbs.

	Touring Car	Pony	Torpedo
<b>DIMENSIONS—</b> Top up, length,	13 ft. 2 in.	13 ft. 2 in.	13 ft. 2 in.
Top down, length,	14 ft. 2 in.	14 ft.	14 ft.
Top up, height,	7 ft.	7 ft.	7 ft.
Top down, height,	5 ft. 3 in.	5 ft.	5 ft.
Width,	5 ft. 3 in.	5 ft. 4 in.	5 ft. 4 in.

**EQUIPMENT (Standard)—**Two gas headlights, two dash oil lamps, one rear oil lamp, one complete set tools, pump, jack, tire repair kit, Q. D. Ribs, gas generator, 34 x 3 1-2 inch tires, high tension ignition through batteries, commutator and spark coil. Leather boots on all steering connections. Right hand front wheel equipped with gear for Warner speedometer.

**EQUIPMENT (Extra Charge)—**Warner speedometer, model E, 60-mile, \$50 extra.

**WATER CAPACITY—**Four gallons.

**CONTROL—**Strictly standard and internal; secured to rear wheels.

**CLUTCH—**Leather-faced cone with slip springs under leather.

**BEARINGS—**Front wheels; large size, ball type. Rear wheels; roller, with ball thrusts.

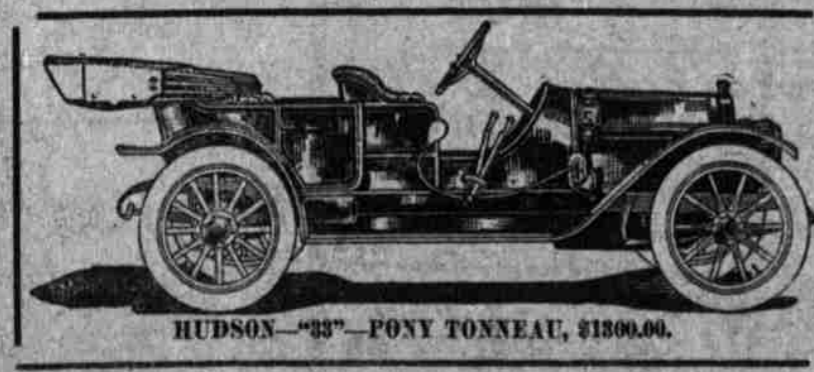
**FRAME—**Pressed steel; best open hearth stock; drop sub-frame, to which transmission and motor are secured.

**RADIATOR—**Extra large; vertical tubes; horizontal fins, very efficient.

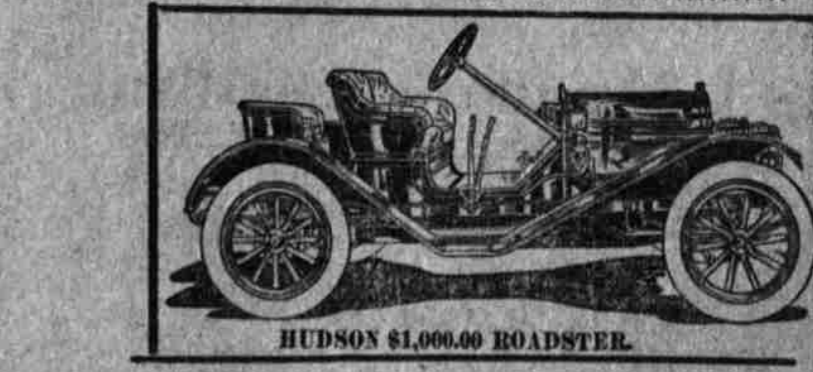
**DASH—**Rich mahogany, with coil box to match. Protected on edges with brass moulding; channeled out to fit over edges of the woodwork, providing protection from the weather.

**EQUIPMENT—**Two gas head lights; generator; two side oil lamps; tall lamps; horn, full set of tools and jack. When Prest-O-Lite tank is ordered generation is not included.

**OTHER EQUIPMENT.**  
32 x 3 1-2 inch Fisk Demountable, Detachable Rims, Tires, extra \$100  
Tire Irons . . . . . 5.



HUDSON "33" PONY TONNEAU, \$1300.00.



HUDSON \$1,000.00 ROADSTER.

**New Models Now in Stock**  
**Dittebrandt Auto Company**