

Have You Heard the News?

C. C. Penington has received a large stock of the new Summer Styles of

Cluett's Coat Shirts

Yes they are all NEW STYLES with attached or detachable cuffs. Now that the warm season is here and it is so much more comfortable to remove the coat you should pay especial attention to the shirt. If you wear Cluett's Shirt you will be stylishly dressed. They are the best made shirt on the market and cost no more than other makes.

\$1.50 and Up

C. C. Penington,

Just Arrived

Car of North Powder Flour. Be sure that you get the best North Powder Flour.

Grande Ronde Cash Co

DRY CHAIN WOOD

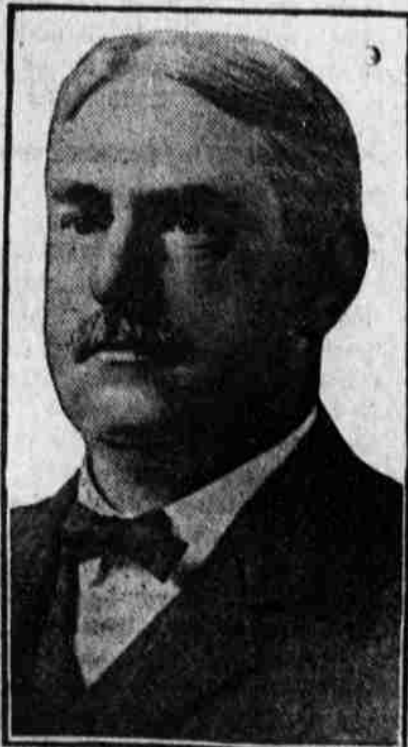
I am prepared to furnish Dry Chain Wood, also partly seasoned wood, to all corners. Kindly phone your order to

V. E. BEAN
PHONE RED 3741

OBSERVER WANT ADS PAY

Mayor Lawler of St. Paul.

Democratic Chief Magistrate of Minnesota Capital.



Daniel W. Lawler, Democrat, is mayor of St. Paul, Minn. His term of office will expire June 7, 1910. He has been active in Minnesota politics many years, filling several offices before he became mayor of the state capital.

Mrs. Anthony J. Drexel.

Leader in Society in America and Abroad.



Mrs. Anthony J. Drexel, the future mother-in-law of Miss Marjorie Gould, is nominally a Philadelphian, but she is well known in society on both sides of the Atlantic. The Drexels spend most of their time abroad, entertaining and being entertained.

THE PASSION PLAY ITS HISTORY



ATELEE SWINK.

No doubt the most impressive and most talked of performance that has ever been staged anywhere in the world is the great Passion play of Oberammergau, which, after a lapse of ten years, is now about to be performed again by the peasants of this remote village nestling among the mountains of the Bavarian highlands. With one or two exceptions it has been given every decade for nearly 300 years and is the fulfillment of a vow made in 1633, when the place was swept by the plague. It is regarded by the villagers as a purely religious function, its charm lying in its unsophisticated simplicity. Of professionalism there is not a trace. Every actor in the play is a native of the village, and out of its population of about 1,500 half take part.

On this occasion the Passion play will begin May 16. There will be three performances in May, six in June, seven in July, nine in August and five in September. After Sept. 25 the actors go back to their pottery and wood carving, and the village slips back into its unbroken quiet again. All roads lead to Oberammergau during the summer months when a Passion play is being performed, and it is estimated that no less than 250,000 visitors will witness the coming performances. People flock there from every city, town and hamlet in the world, many Americans being among the number. The village lies forty-three miles southwest of Munich, which is in the far southeastern part of Germany. In a straight line Munich is scarcely 200 miles across the Austrian Tyrol from Venice, and by rail it is a fourteen hour journey or so from Bremen, Hamburg or Rotterdam, a distance of about 500 miles.

There are no hotels in the village, and the peasants take their audience right into their own homes. To witness the Passion play you must have spent the previous night in the village itself. Every house is registered as possessing a certain amount of sleeping accommodations. The total number of beds in the village available for visitors is approximately the number of seats in the theater—4,200. After one-



ANTON LANG, WHO IMPERSONATES CHRIST.

CITY RETIRES WARRANTS

NEARLY \$15,000 LESS THAN THE REPORT SHOWS

Auditor's Report for Past Year Made Known Last Night.

City Auditor N. J. Mansanger's report of the financial condition of the City of La Grande was adopted at the council meeting last evening. The report was completed some time ago and as there has been a material receipt of cash from taxes since March 21, the date of the report, the warrant indebtedness shown in the report is between \$10,000 and \$15,000 in excess of what the outstanding warrants amount to today.

A summary of the report involving all transactions from March 16, 1909 to March 21, 1910, follows:

Total receipts \$61,796.67
Total disbursements 50,769.55

Balance \$11,027.12
Bonded indebtedness \$235,000.00
Outstanding warrants 44,917.55
Total indebtedness 279,917.15
Less cash on hand Mar. 21,
1910 17,740.82

Actual indebtedness on
March 21, 1910 \$262,176.73

third of the beds in each house are placed at the disposal of the local official lodging bureau the householders make their own terms for the rest, but a committee fixes a rigid maximum charge for these. A ticket for each performance is given to every householder for each of his registered beds, and these tickets are handed before the performance to the persons who have occupied the quarters. It is apparent, therefore, that in order to get a seat at the play you must rent a room in Oberammergau. The lodging may be a tiny cottage room which you must climb a ladder to get to, or it may be a good looking room in a chalet of the better class. At any rate, they are all picturesque enough outside or in to make up for hotel comfort which they lack.

This year one German steamship company has rented a number of houses in the village for visitors, the prices ranging from \$3 to \$5 a day. The play begins at 8 o'clock in the morning and lasts until 6 o'clock in the evening, with an intermission of two hours at noon. If the auditorium isn't large enough to hold all who want to see the play on any one of the regular days it will be repeated in its entirety on the day following. There are not many box seats in the theater, and these cost \$5, while the other seats run from \$2.50 to 50 cents, according, of course, to location.

Oberammergau is one of the quaintest villages in the world. Most of the houses are in baroque style, covered with painted life sized figures of the Blessed Trinity or of the saints, and some of the massive oak doors are wonderfully carved. Several months before the play is to be given the players let their hair and beards grow in order more naturally to represent the characters they portray. The principal part in the Passion play is that impersonating Christ, and this time it will again be taken by Anton Lang. How he was first chosen for this role is an interesting story.

For many decades Joseph Mayer had impersonated Christ, but he was growing old and at last promised his wife that never again would he risk his health and life by appearing as the Saviour. The crucifixion scene means a physical strain that only a strong man can stand, and on one occasion Mayer was unconscious when taken down from the cross and ill for weeks afterward. Anton Lang, working on placidly at his pottery, was one day astounded to learn that he had been selected for the great part. He protested his unfitness, that he was unworthy of so high an honor, but at last agreed. He studied night and day and put his whole soul in the work and in 1900 won a great triumph from the first day. In the presence of a vast and silent multitude, in which royalty had its representatives and politics, art, letters and science many of its chief personages, he received his sentence from Pontius Pilate, bore the heavy cross to the mimic Calvary, hung upon it with aching limbs and appeared serene and glorious in the apotheosis.

Those who have seen plays acted only in theaters cannot imagine how

wonderfully and impressively realistic those Passion plays are, with the huge mountains for a background. Gas, electric light and limelight are things unknown there, and there are no stage fakes employed. The sparrows are real, the butterflies and bees real, and

(Continued on Page 6)

STEWARDS OPERA HOUSE

SATURDAY Evening, MAY 14

The Noted Prima-Donna
COMEDIENNE

Dorothy Morton

In J. J. McNALLY'S MUSICAL COMEDY

"Widow Jones."

Company of 30. Bevy of Show Girls. Lavish Production. Gorgeous Gowns.

Prices: \$1.50, \$1.00, 75c, 50 cts.

Seats on Sale Thursday Morning

Complete equipment for resetting and repairing rubber buggy tires.

LA GRANDE IRON WORKS

D. F. GERALD, Proprietor
Complete Machine Shops and Foundry

DEPOT STREET

MAHAFFEY BLDG

THE ELITE DYE WORKS

Steam and French dye cleaning of Ladies and Gent's clothing, Ladies' silk waists and evening gowns, fully cleaned and pressed. Felt and Panama hats cleaned and blocked. All work guaranteed. We call or and deliver work.

H. B. Waggoner, Manager.

Tel. Main 64

Dont Overlook Us

When you are looking for a place to buy feed. We have a large stock which must be sold out, and we have the right prices on it. Ask any dealer about the guarantee on our flour, too.

LA GRANDE MILLING CO

Wellington Piano

\$265.00

You will not find another piano bargain like this in town. See them.

STEINWAY, KURTZMANNE, LUDWIG and other makes.

J. T. SCOTT

N. K. WEST, President T. J. SCROGGIN, Cashier
WM. MILLER, Vice President H. E. COOLIDGE, Ass't Cashier

No. 9814

United States National Bank of La Grande

CAPITAL STOCK \$100,000.00

Directors

N. K. WEST J. L. CAVINESS T. J. SCROGGIN
WM. MILLER A. T. HILL C. T. BACON
J. C. HENRY H. E. COOLIDGE FRANK CONLEY