

LA GRANDE EVENING OBSERVER
 Published Daily Except Sundays
 GEORGE H. B. BENTLEY
 EDITOR AND PROPRIETOR
 United Press Telegraph Service
SUBSCRIPTION RATES:
 Daily, single copy, 5c
 Daily, per month, \$1.50
 Daily, six months in advance, \$8.00
 Daily, one year in advance, \$15.00
 Weekly, six months in advance, \$7.50
 Weekly, one year in advance, \$14.00
 Entered at the postoffice at La Grande as second-class matter

This paper will not publish any article appearing over a nom de plume. Signed articles will be returned subject to the discretion of the editor. Please sign your articles and save disappointment.

Advertising Rates.
 Local reading notices 10c per line first insertion; 5c per line for each subsequent insertion.
 Resolution of condolence, 25c a line.

This is Mother's Day in La Grande, white ribbons and white button-bonnets are numerous. The idea is worthy of more general acceptance than is usually demonstrated.

Tomorrow is Arbor Day. Little preparation in this city has been made to observe this day. In some sections of our country this is generally observed with appropriate ceremonies.

MRS. PALMER IS 96

Grandma Palmer is celebrating her 96th birthday in a quiet manner today. A few friends could not help but call on her and many phoned their congratulations. Grandma Palmer came to the Grande Ronde valley 44 years ago and such a sweet cheerful character has impressed itself in no small degree upon the hundreds, yes, thousands who have been fortunate enough to come in personal contact with her. Year after year it has been the pleasure of the Observer to chronicle these annual receptions and comment upon this wonderful life. One of the many things that always appeals to the writer was the fact that Grandma Palmer (still living) rode upon the first passenger train ever pulled out of a station in the United States. What history we, as a nation, have made during the years of this one beloved life.

POINTS REGARDING CENSUS

The census begins April 15th and must be completed in two weeks in cities and in 30 days in all other areas.

The enumerators will wear a badge inscribed "United States Census, 1910." The law requires every adult person to furnish the proscribed information, but also provides that it shall be treated confidentially, so that no injury can come to any person from answering the questions.

The president has issued a proclamation, calling on all citizens to cooperate with the census and assuring them that it has nothing to do with taxation, army or jury service, compulsory school attendance, regulation of immigration, or enforcement of any law, and that no one can be injured by answering the inquiries.

It is of the utmost importance that the census of population and agriculture in this state be complete and correct.

Therefore every person should answer promptly, correctly and completely the census question asked by the enumerators.

Declare Local Option Illegal.

That the canvassing board failed to comply with the law and officially notify the county court of the result of the election, which is supposed to have made Umatilla county dry, and that the county court therefore acted without judicial knowledge of the result of the election when it made its order banishing saloons from the confines of the county, is the point upon which Col. J. H. Raley and Attorney J. P. Winter are to base their attack upon the local option law in so far as it affects the county says the Pendleton E. O. While the point raised is purely technical it raises a clear cut issue and the only mystery is why the point has never been raised before.

No attack is to be made upon the law in general but only insofar as it applies to Umatilla county. If the attorneys are successful in their contention the men now under indictment will not only escape the payment of a fine out salaries will be permitted to flourish unobscured in every city and town within the county. According to Col. Raley the law specifies that the canvassing board shall canvass the election returns, and officially notify the court of the result of the election. He asserts that in this instance the board failed to do this, according to the records, and that therefore the county court in assuming the "dry" order was acting on hearsay knowledge and not on official information. He therefore alleges that the order is without any foundation and worthless.

It is understood that the attorneys for the beer men and the district attorney will stipulate the facts in the case and allow it to go before the courts for a test case. It will probably be several months yet before a decision is reached.

BILLS ARE ALL IN
 County Court passes on over \$6000 costs for March term.

All bills against the county which came up during the month of March, including the costs of 22 days of the circuit court have been passed upon by the county court, and will be paid immediately by the treasurer. The bills do not total very high considering the road and court work that has been done; the amount being given officially as between \$6300 and \$6400.

Married in Parsonage.

Chas. H. Barber and Mrs. Anna Shelton of Union were married this afternoon in the M. E. parsonage by Dr. H. E. McLeod. The newly married couple leaves tonight for Walla Walla on their honeymoon.

EARTHQUAKE IN PORTLAND

Portland, April 7.—Three distinct earthquakes were felt in Portland at 10:15 this morning. The tremors lasted thirty seconds. There was no damage.

From the Car Window

You can see the wonderful panorama of the fertile irrigated and grazing lands, wheat fields and stock ranches of Southern British Columbia and Alberta if you travel via the

CANADIAN PACIFIC

Soo-Sp kane Route

Tickets for sale by all O. R. & N. agents in Oregon, Washington and Idaho.

A la Carte Dining Car Service, Compartment Observation car and Superior Tourist Sleeper


Details Berths Literature
 H. M. Jackson J. S. Carter
 T. P. A. Gen Agt
 14 Wall St. Spokane

Black Beard FOUND—Gentleman's watch for band aids. Owner has been notified by identifying property and paying for this advertisement. Inquire of Walter L. Buzzard, Zumwalt, Ore. 4-7-10

New Shipment of Hams
Swift's Sugar Cured Hams
and Winchester Bacon
Shipment Has Just Reached Us
City Grocery and Bakery

Complete equipment for resetting and repairing rubber buggy tires.
LA GRANDE IRON WORKS
 D. F. GERALD, Proprietor
 Complete Machine Shops and Foundry

I WILL BE LOCATED HERE PERMANENTLY AFTER APRIL 6TH



OFFICE ROOMS OVER NEWLIN'S DRUG STORE
 REMEMBER, MY GLASSES GIVE SATISFACTION—ASK ANYONE
HEACOCK
 EYESIGHT SPECIALIST
 I GRIND ALL MY OWN LENSES

- SEEDS -

As usual, the largest stock of Bulk and package seeds in the county. Alfalfa, Red Clover, Timothy, Red Top Blue Grass, White Clover and everything in grain seed.

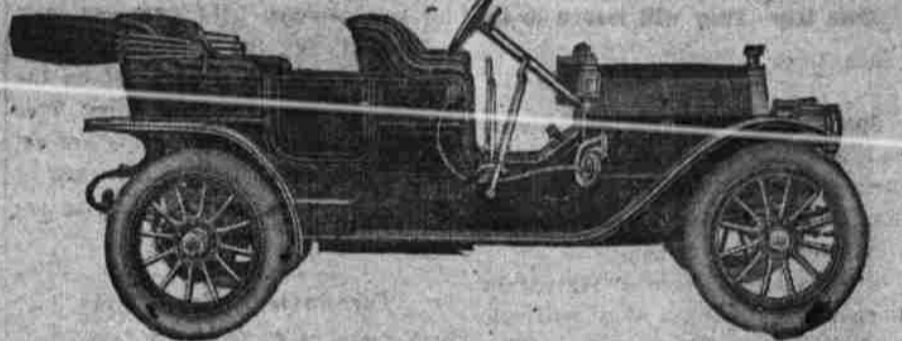
Garden Seed in Bulk. Hay, Grain, Feed and Flour
Phone Main 57, Independent 1481

A. V. OLIVER,
 Corner Greenwood and Jefferson

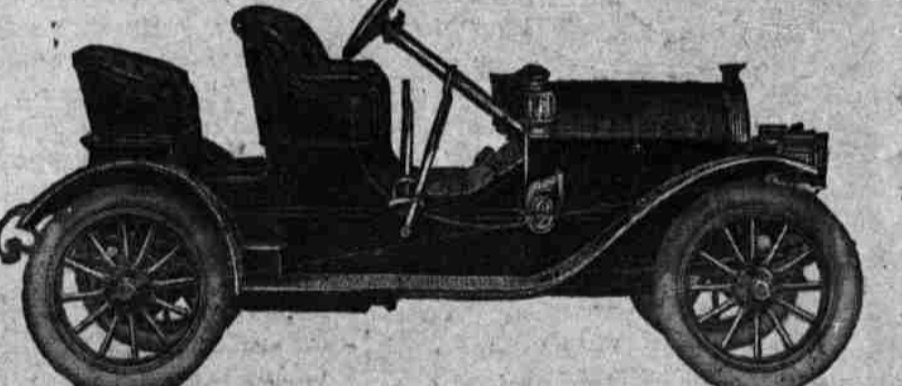
Mitchell



SILENT AS THE FOOT OF TIM
THE whole world is fast coming to know high-class car. America, France, England, Germany, Russia, Spain,—each contributes its share of praise for Mitchell beauty and construction—and patronage follows praise.



THERE is not a cheap feature about the Mitchell, except its price, and it has everything that makes an Automobile admired and desired.



Its is low-cost, because it is not priced on the hysterical basis, and because our facilities are so complete that we can keep down the cost of construction to where it belongs.

It is high-class because it is made of the same high-class materials that the world's highest priced cars are made of, and quality is never sacrificed for quantity.

It is beautifully designed, finished and equipped. It is rakish smart, refined, solid, comfortable and luxurious. It is silent in its running—absolutely silent—and it will last and serve you faithfully for years to come.

What more can there be to an automobile, and why should any car on earth sell for more money?

Mitchell
THREE MAGNIFICENT MODELS
 The Mitchell Six Cylinder, 50 horse power, 7 passengers
\$2000 F. O. B. Factory
 The Mitchell Touring Car, 30-35 horse power, 5 passengers
\$1350 F. O. B. Factory
 The Mitchell Roadster, 30-35 horse power, 3 passengers
\$1100 F. O. B. Factory
Ditterbrant Auto Co.
 Summerville, Ore.