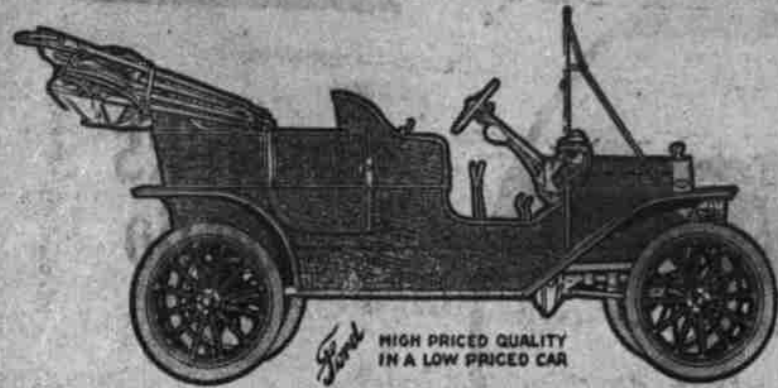


# You Can Afford a Ford



**\$1,075.00 F. O. B., La Grande** With Top, Glass Front, Speedometer, Five Lamp, Gas Generator, Horn and Magneto

**SPECIFICATIONS OF THE MODEL T. FORD** Designed and built by the man who built the first gasoline automobile in America.

**MOTOR**—4 Cylinder cast en-bloc 3 3-4 X 4, developing 22 1-2 horse power.

**TRANSMISSION**—Ford special design interlocking spur gears and running in a bath of oil

**CLUTCH**—Multiple disk running in oil

**FINAL DRIVE**—Carden shaft inclosed in dust tight casing patented in all countries

**REAR AXLE**—Ford special design steel forging with Timkin roller bearing throughout

**MAGNETO**—of special design and not only furnishes enough electricity to run the car but has surplus enough to light the car with electricity.

**WHEEL BASE**—100 inches

**WEIGHT**—1200 pounds

Many people ask what it cost to run an automobile. We reproduce herewith a letter from Mr. W. B. Bach, which shows his total expense for a run of 8500 miles. Mr. Bach has kept an accurate account of every item of expense and the figures in his letter are all taken from his books. The item for which he mentions tires are for extra inner tubes, as the tires on Mr. Bach's machine, as well as all tires on all Fords sold during the season 1909, are the tires that were on the car at the time it left the factory:

Imbler, Oregon, Jan. 1, 1910

Mr. L. C. Smith,  
La Grande, Oregon,

Dear Sir:  
I purchased a Ford machine from you on June 12th, 1909, fully equipped at the cost of \$1130. Since then have run 8500 miles in all kinds of weather and over almost impassable roads at a total expense as given below:—

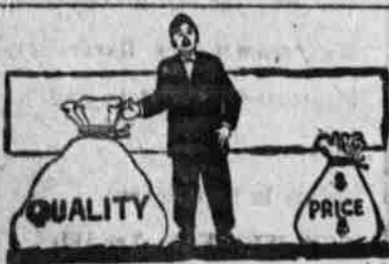
General repairs on engine or any part of	NONE
Gas	\$110.00
Lubricating oil	65.00
Extra tires, spark plugs etc.	35.00
Tire repair	20.00

Total ..... \$230.00

This an average of 2 7-10 cents per mile  
My tires are still in good condition and should stand from 3000 to 5000 miles more usage. Have never had occasion to have any part of the machine apart and has always given the best of satisfaction under the most trying conditions.

Yours Very Truly,  
W. B. BACH.

**Smith's Garage**  
1312-14 Jefferson Avenue  
La Grande, Oregon



**A RATIO**

THAT IS WELL MAINTAINED IN OUR OPTICAL WORK

When you come to us to have your eyes fitted we ascertain the exact condition of your eyes—fitting you carefully with the lens that relieve your eyes completely—not by making the eye accommodate itself to the lens, but by having the lens fit the eye perfectly.

Our experience and genuine skill assure you of EXACT work always—and without exorbitant charges.

**J. H. PEARE**

## BERI-BERI IS LOCATED HERE

DREADED DISEASE TO ORIENTALS CLAIM VICTIM.

Uncontagious disease of very rare appearance found here

Beri-Beri—an oriental disease brought on by an overindulgence in a rice diet, and extremely rare in this section of the state—has broken out in La Grande with one death already recorded, two acute cases sent to Portland and three others suffering with less acute attacks. The disease is not contagious but is one of the dangerous maladies affecting a rice eating nation. K. Omura, the Japanese buried last Saturday, died from the pernicious cardiac form of the dreaded disease, and among the cases coming to the attention of the local physicians, are seen both of the two other forms, namely, the dropsical and atrophic forms. Doctors Bacon and Hall discovered the presence of the disease. It had been fully determined that the sudden death of Omura was occasioned by this disease, perhaps the first time it has been seen in La Grande.

### Two Other Cases.

Yesterday two other Japs were brought in to Bacon & Hall's office and after careful diagnosing were declared to have the dropsical and Atrophic forms. They were sent to a Portland hospital immediately. Three others are suffering from less serious attacks of the same disease near Hot Lake.

## S. P. OFFICIALS INSPECT O. R. & N.

THREE PRIVATE CARS TAKE A GROUP OVER LINE.

Go over O. R. & N. to Huntington and return again.

Several Southern Pacific officials went over the O. R. & N. as far as Huntington yesterday, returning late last night. With the S. P. officials were several O. R. & N. men; T. W. Younger, master mechanic for the S. P. out of Portland; L. R. Fields, superintendent on the same division occupied the S. P. private car California, while General Superintendent M. J. Buckley, and Chief Engineer Bosche were in car "02" with Superintendent Bollins. Other members of the party occupied "02" and "03". The officials were on a tour of inspection.

## UNION COUNTY TO HAVE 30 DELEGATES

LOCAL CENTRAL COMMITTEE HAS NOT OUTLINED DETAILS.

Await conference with state committeemen before taking action.

The matter of electing Union county's delegation to the state assembly in Portland next July, is a matter which county Chairman J. H. Peare and the members of the Central County Committee have not taken up yet. Little will be done until the State Central Committeeman C. E. Cochran, has returned and can be consulted in the matter that suggestions laid down by the state Subcommittee appointed for that purpose, and of which Mr. Cochran is a member, may be followed out. The State Central Committee last Saturday elected Judge George of Portland to succeed Cake. At that meeting it was suggested that all counties elect delegates on a proportionate basis by precinct conventions, and 30 delegates were apportioned to Union county. The details of these precinct conventions are what the Chairman and Committeemen of the local Central Committee will have to ferret out.

### FREIGHT SNOWBOUND

Passenger train held for several hours near Kamela. A rather unusual event occurred

# CLEAN-UP SALE

We have just finished our stock taking. This interesting event always has many surprises for the merchant. Ours has been no exception, but this time we are going to give the trade the benefit of the surprises, which is an exception.

## All Remnants and Odds And Ends At Just About half price

REMNANTS OF DRESS GOODS, SILKS, LACE S AND EMBROIDERIES

- One lot ladies shoes, \$2.50 to \$3.50 value ..... \$1.38
- One lot of ladies waists ..... Half price
- Ladies sweaters ..... half price
- One lot of ladies wrappers ..... Half price
- One lot of mens shirts ..... Half price

AND MANY OTHER THINGS TO NUMEROUS TO MENTION

If you are in need of any wearing apperell or other goods to take you on untill Spring come in and look over the bargains we are offering.

DON'T FORGET—We are still giving premiums for you cash trade.

## THE PEOPLES STORE

OPERA HOUSE BLOCK LA GRANDE, OREGON

### DRY CHAIN WOOD

I am prepared to furnish Dry Chain Wood, also partly seasoned wood, to all comers, Kindly phone your order to

**V. E. BEAN**  
PHONE RED 3741

**NEW AMYTHEST COLLAR PINS HAT PINS AND SAVALIERS,**  
**E. M. WELLMAN & CO.**  
ADAMS AVENUE

## Burglary, Theft and Larceny Insurance

OUR POLICY COVERS All household goods and personal effects, belonging to any member of the family or guest, against loss by burglary, theft or larceny, including thefts by servants or other employees.

ALSO COVERS DAMAGE To property, plumbing and other fixtures. Allows six months vacancy without notice. No co-insurance. No inventory of the property is necessary.

RATES FOR A YEAR.  
Private Residences and Apartment Houses.

\$1,000, \$12.50; \$2,000, \$22.50; \$3,000, \$30.00; \$4,000, \$35.00; \$5,000, \$40.00
Each Additional \$1,000—\$5.00
Stables..... \$15.00
Each \$1,000..... \$15.00
Vacant houses (plumbing fixtures and damage to houses each \$1,000)..... \$10.00

**LOGAN-SHERWOOD REALTY CO**

### DRESS MAKING PARLOR

108 ELM STREET  
Having opened Parlors at the above address I am prepared to do anything in the dressmaking line. Plain Sewing also solicited.  
Next door to Ada Roush photography

Miss Emily Wilson