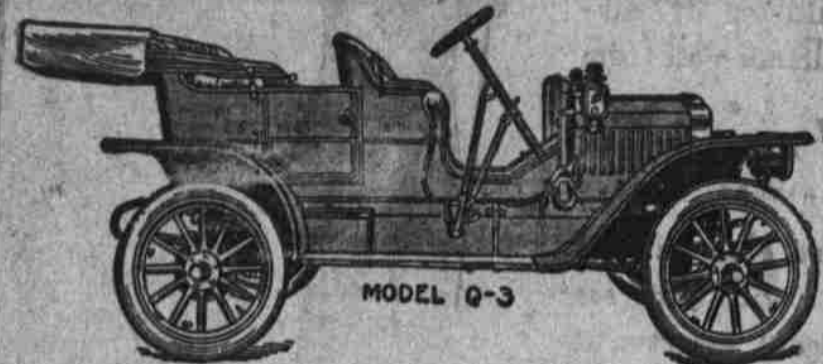


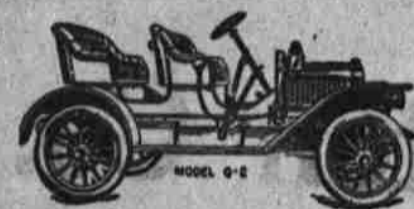
# The Maxwell 1910

THE MAXWELL 1910 STANDS FOR THE AUTO THAT THE BUYER OF MODERATE MEANS WANTS, FOR IT COMBINES ALL THAT IS NEW AND UP-TO-DATE IN 1910 CARS, FOR AUTOMOBILE SCIENCE IS AT ITS BEST IN THIS MAKE. IT IS A SERVICEABLE CAR WITHIN THE REACH OF SCORES IN LA GRANDE.

## This is a Popular Make



This model is a small five passenger touring car with 22 H. P., equipped with sliding gear transmission. A car for the man with a small family and it is a popular seller  
SALE PRICE .....\$1200



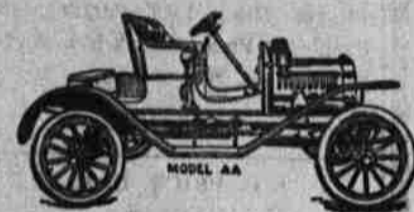
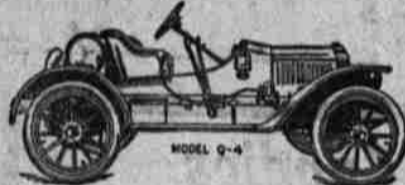
Four passenger detachable road seat, ample carrying space  
Four cylinder, 22 horse power  
SALE PRICE .....\$1100

Three passenger roadster, detachable rear seat, four cylinder, 22 H. P.  
SALE PRICE .....\$1075



MODEL Q STANDARD  
Two passenger roadster, Extra seat makes convenient touring car, 22 H.P.  
SALE PRICE .....\$1050

The Sportsman. A special two passenger car built for speed. 22 horse power  
SALE PRICE .....\$1200



Two cylinder, 12 horse power A good car for a doctor  
SALE PRICE .....\$725

## Sliding Gear Transmission

Giving three speeds ahead and reverse on all four cylinder cars which is a new feature for \$1200 cars and under.

## Ten Thousand Miles

Without stopping the engine is what a Model E 30 did in 1910 and a duplicate of that model is now in stock at the White-

man garage where it can be seen and tried in a free ride. Let us show you its working principles.

## Tires Guaranteed

All cars carry tires that are guaranteed to travel 5,000 miles, a feature that should appeal to the buyer.

# J B Whiteman & Son

La Grande, Oregon



THAT IS WELL MAINTAINED IN OUR OPTICAL WORK

When you come to us to have your eyes fitted we ascertain the exact condition of your eyes—fitting you carefully with the lens that relieve your eyes completely—not by making the eye accommodate itself to the lens, but by having the lens fit the eye perfectly.

Our experience and genuine skill assure you of EXACT work always—and without exorbitant charges.

# J. H. PEARE

# ATTEMPT TO WRECK TRAIN

## PENDLETON LOCAL ESCAPES DERAILMENT

Following fast train, local comes to an obstruction.

A dastardly attempt to wreck the Pendleton-Portland passenger train was made yesterday afternoon, one mile east of Quinton station of 113 miles west of Pendleton, says the E. O. It is supposed that tramps ejected from train No. 1, which had passed that point 30 minutes before, are responsible for the attempt to get even on the trainmen by destroying the property of the company and taking the lives of other trainmen and innocent passengers.

Fifteen feet of the heaviest railroad steel used on the track had been placed on the track and but for the fact that the locomotive which was drawing the train happened to be one with a low pilot, the train would certainly have been wrecked and lives undoubtedly lost. As it was the pilot caught the obstruction and shoved it along on the track for 400 feet before the train was stopped. The rate of speed at which the train was traveling and the effect that a sudden wreck would have had can thus be seen.

Train No. 1, westbound, passed this spot a half hour before and the two tramps who were ejected there are supposed to have been the ones who placed the rail on the track. The train was delayed nearly half an hour while a search was made for the supposed wreckers and detectives were immediately dispatched from The Dalles to take up the trail. As the line is being watched in every direction it is believed that the tramps will be taken into custody today.

# WILL REOPEN THE STORES

## BAER MERCANTILE CO. AND M. WELL TO RESUME.

Orders have been placed for goods and stores will resume.

The two big stores, M. Well & Co. and the Baer Mercantile Company, that were burned in this city on Jan. 27, are arranging to reopen for business, says the Baker Herald. As stated in the Herald shortly after the fire the Baer Mercantile Company will occupy the frame building north of the Kentucky liquor store and M. Well & Co. are preparing to open in the building formerly occupied by the express company on Washington street.

At a meeting of the Baer stockholders yesterday, it was voted to continue in business and orders were placed for goods. The story that gains circulation stating that Matt Wahn would soon go east and sever his connection with the firm is without foundation. Mr. Wahn will probably make a trip east but the action of yesterday afternoon would indicate that he has no intention of leaving the Baer company.

# WILL FORM A LEAGUE

## THE DALLES, HOOD RIVER AND OTHERS TALK BALL.

Movement on foot to get league started at River District.

The Dalles, Feb. 11. (Special).—M. J. Van Worst of White Salmon is the instigator of a plan to form a four-club baseball league this year, with The Dalles, White Salmon, Hood River and Stevenson as the members of the organization. With these cities represented in the

# CLEAN-UP SALE

We have just finished our stock taking. This interesting event always has many surprises for the merchant. Ours has been no exception, but this time we are going to give the trade the benefit of the surprises, which is an exception.

# All Remnants and Odds And Ends At Just About half price

REMNANTS OF DRESS GOODS, SILKS, LACES AND EMBROIDERIES

- One lot ladies shoes, \$2.50 to \$3.50 value .....\$1.38
- One lot of ladies waists ..... Half price
- Ladies sweaters ..... half price
- One lot of ladies wrappers ..... Half price
- One lot of mens shirts ..... Half price

AND MANY OTHER THINGS TO NUMEROUS TO MENTION

If you are in need of any wearing apparel or other goods to take you on until Spring come in and look over the bargains we are offering.

DON'T FORGET—We are still giving premiums for you cash trade.

# THE PEOPLES STORE

OPERA HOUSE BLOCK

LA GRANDE, OREGON

## DRY CHAIN WOOD

I am prepared to furnish Dry Chain Wood, also partly seasoned wood, to all comers. Kindly phone your order to

V. E. BEAN  
PHONE RED 3741

## NEW AMYTHEST COLLAR PINS HAT PINS

AND SAVALIERS,

E. M. WELLMAN & CO.  
ADAMS AVENUE

## Burglary, Theft and Larceny Insurance

### OUR POLICY COVERS

All household goods and personal effects, belonging to any member of the family or guest, against loss by burglary, theft or larceny, including thefts by servants or other employees.

### ALSO COVERS DAMAGE

To property, plumbing and other fixtures. Allows six months vacancy without notice. No co-insurance. No inventory of the property is necessary.

### RATES FOR A YEAR

Private Residences and Apartment Houses.  
\$1,000, \$12.50; \$2,000, \$22.50; \$3,000, \$28.00; \$4,000, \$35.00; \$5,000, \$40.00.  
Each Additional \$1,000—\$5.00 Stables.  
Each \$1,000.....\$15.00  
Vacant houses (plumbing fixtures and damage to houses each \$1,000.....\$10.00

# LOGAN-SHERWOOD REALTY CO

Pinesave ACTS LIKE A FOUNTAIN  
Carbolized BELIEVES ALL  
FORMS OF HEAD DISEASE