

# Candy Candy Candy Candy

We have the largest assortment of candies ever brought to La Grande, and the prices are right. No order is too large for us and we make special prices for Christmas Trees. Call in and see our display.

## The James G. Snodgrass Grocery

### Late Shipment.

Our silk waists, consisting of blacks, browns, grays, blues and white and black Jersey waists, the very latest. The latest designs in neckwear are beautiful. Our line of silk scarfs are exquisite. Our single piece suits in

silks and cashmere are the latest. Our whole line in wearing apparel is up to date and prices are the lowest. Our Holiday line for children consists of dolls and all kinds of toys. Do not forget where you can buy the cheapest. At Van Duyn Company.

### AUTO EXPERT HERE

WILL INSPECT LOCAL FORDS AT FREQUENT INTERVALS

Ford Factory Sends Expert to Local Dealer to Inspect Machines

Harry Disher, representing the Ford automobile, is in the city today closing a deal with L. Smith, the local Ford dealer, to make regular visits to this city during the coming year to give expert attention to all Ford Machines. Mr. Disher is direct from the factory and it is his purpose and work to carefully inspect all of the Ford Machines. Mr. Smith has taken it upon himself to inform all of the local Ford owners when Mr. Disher will be here so that all of the machines, whether they are alling or not, so that they may be carefully inspected at frequent intervals.

NEW ONTARIO CHURCH. President Homan and J. D. Gillilan Dedicate New Edifice.

A splendid new Methodist edifice was dedicated at Ontario last Sunday, when President Homan of the Willamette University, and District Superintendent J. D. Gillilan, superintendent

of the services. Mr. Homan delivered the dedicatory address and had charge of the subscription campaign. Mr. Gillilan who is president elder in that district, returned this morning from the seat of the successful service.

Delia Pringle Company.

"Faust," was presented by Miss Pringle in a highly commendable manner before a large and appreciative audience last night. Miss Pringle as "Marguerite," and Mr. C. K. Van Auker as "Mephisto" were equal in many respects to some of the much talked of "eastern stars." The play was beautifully staged, the electrical effects being worthy of mention.

"Flora May's Dutchman," is the play for tonight and it is one of the prettiest comedy-dramas in Miss Pringle's long list. Miss Pringle in the title role and Mr. Van Auker as the German "Baron" are exceptionally clever. Tomorrow night beautiful "Zaluna" will be staged for the first time in La Grande. The diamond ring will be given away Friday night.

Notice to Water Consumers.

All persons using city water now indebted to the city for the same, will please call at the city recorder's office and settle, as I am under instructions to collect or shut off the water.

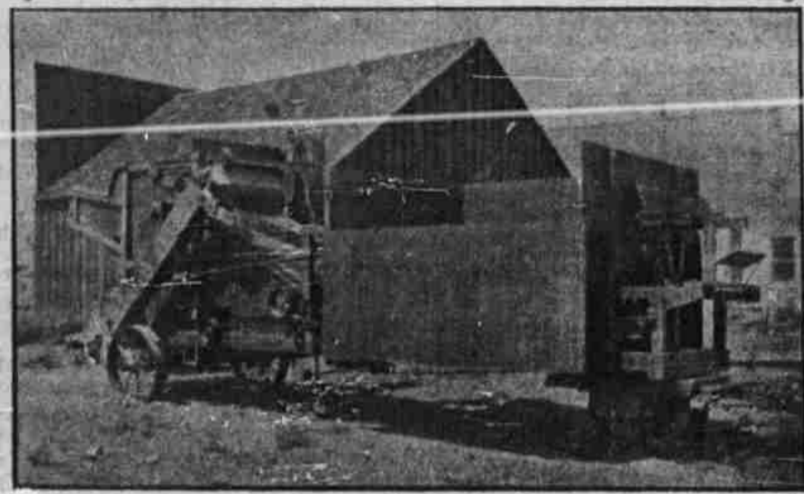
H. C. GILLMAN, Water Supt.

### ASTHMA REMEDY.

Give prompt and positive relief in every case. Sold by druggists, price \$1.00. Trial package by mail 10 cents. William's Mfg. Co. Prop. Cleveland, Ohio. A. T. Hill, Druggist.

**H. T. MATOTT.**  
Plank Sidewalks Built and Repaired. Excavating and Filling. Phone Black 1562.

## We are Still Threshing



### Will Demonstrate Every Day This Week

AN IMBLESER MAN SAYS:—"If you will start your factory at Imbler we will finance it for you."

A NORTH POWDER MAN SAYS:—"If you will come to North Powder we will see you through."

We are telling you this to show you what some level-headed business men think of it after seeing it run, men that know a piece of machinery when they see it.

We want the home of the AUTOMATIC THRESHER to be in La Grande if possible. GO SEE IT EAT HAY. Not some time next week, but TODAY.

At a capitalization of \$30,000.00 it is far ahead of any investment that has ever been offered you (the little model will prove it.)

BEAVER CREEK WATER will make bull RUN some, and that is what the Automati cThresher will do to the old machines.

If we happen to miss you with the subscription, do not feel slighted, but call on us as we cannot reach every place.

## La Grande Manufacturing Company

Office With Van Duyn Realty Co.

GEORGE PALMER, Pres. W. L. BRENHOLT, Asst. Cash.  
F. J. HOLMES, Vice-Pres. SHERWOOD WILLIAMS, 2nd Asst: Cash  
F. L. MEYERS, Cashier.

**LA GRANDE NATIONAL BANK**  
OF LA GRANDE, OREGON  
Capital and Surplus \$170,000. 00  
Deposits \$1,000,000.00

### DIRECTORS

George Palmer C. C. Penington  
F. J. Holmes G. L. Cleaver  
W. J. Church F. M. Byrkit  
F. L. Meyers W. L. Brenholt

The Largest and Best Banking Institution in Union County  
Respectfully Solicits Your Business

## THE GIFT MAKERS BIG OPPORTUNITY

OUR NEW AND BEAUTIFUL LINE OF HOLIDAY GOODS, full of the CHOICEST SELECTION for the CHRISTMAS TRADE.

is now ready for the inspection and approval of all who know a good thing when they see it.

### USEFUL PRESENTS

#### BEAUTIFUL PRESENTS

#### APPROPRIATE PRESENTS

We have new novelties in nice but inexpensive goods. We have choicer and more costly gifts. But in all grades and all prices we can supply you with

THE NICEST AND MOST APPROPRIATE GIFT FOR LITTLE OR BIG, OLD OR YOUNG.

Do not fail to see our special attractions in

**Toys, Books and Novelties**  
**Fancy Goods, Notions, etc.**

OUR STOCK IS GENEROUS IN QUALITY AND INCLUDES ONLY GOODS OF APPROVED WORTH AND SUPERIORITY.

You can not help from being pleased with our well selected, popular and in every way desirable line.

OUR VERY REASONABLE PRICES WILL DELIGHT YOU.

Select your gifts from our up-to-date stock and you will get the best and most appropriate present at the fairest figures that you have ever known.

## NEWLIN BOOK & STATIONERY COMPANY

## THE GEORGE PALMER LUMBER CO RETAIL DEPARTMENT

We Solicit Your Orders for

SHINGLES  
RUBBEROID ROOFING  
DEADENING FELT  
BUILDING PAPER

We are prepared to furnish all other material promptly. Main St.

## Xmas Sale

### High Grade Furniture

THIRTY-FIVE RUGS \$35.00; \$30.00; \$25.00  
SPECIAL PRICE . . . \$25.00; \$23.00; \$20.00



3 Carload of High Grade Furniture received on November 21, November 24 and December 2 \$10,000.00 Worth must be moved at once. Enormous reductions made on every article—FOR CASH ONLY.

40 Styles of Rockers . . . . . \$6.00 to \$18.00  
Your Choice . . . . . \$4.25 to \$12.40  
\$33.00 Solid Brass Bed, Now . . . . . \$23.00

The hard Malleable Steel Beds, \$10.00 to \$35.00 . . . . . 1-4 off at this sale

Buy your range now for \$5.00 and \$10.00 off on each range—FOR CASH ONLY—Come in and look this sale over. Buy a useful piece of furniture for the home and I will deliver it Christmas Eve.

## F. D. Haisten

The Furniture Man  
Fir & Jefferson Both Phones