

New Garments

Neat, New Patterns, Just Arrived in Coats and One Piece Dresses For Ladies



Wooltex

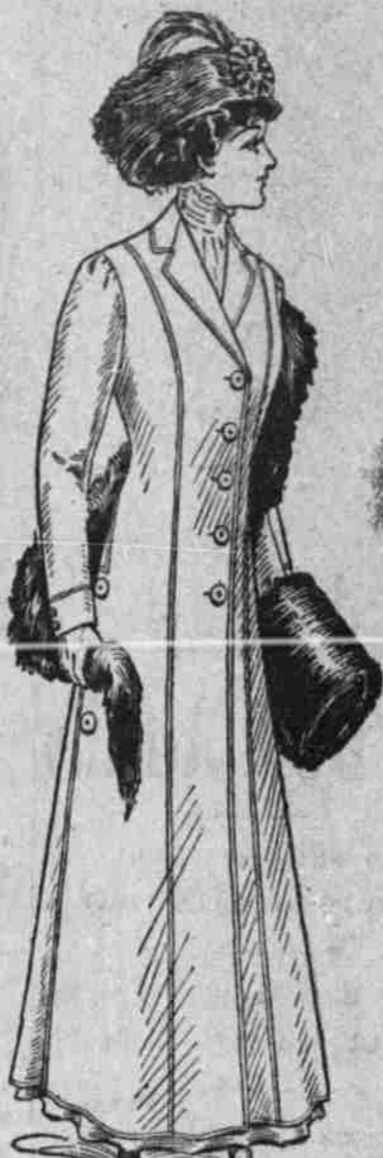
WE INVITE YOU TO COME IN AND EXAMINE THESE GARMENTS CAREFULLY AND TO COMPARE THEM WITH OTHERS.

TRY IT ON and see into which beautiful lines the garments fall, with no pulling or binding and how shapely and smart it all is.

NOTHING TOO GOOD FOR WOOLTEX.

New Wooltex and Seigel coats \$15.00 to \$30.00

AN ELEGANT SHOWING OF ONE PIECE DRESSES IN ALL COLORS AND MATERIAL \$13.50 to \$25.00



Wooltex 3603

Wooltex FASHION FAULTLESS COATS - SUITS - SKIRTS FOR WELL DRESSED WOMEN.

We're Showing a Complete Line of Gordon Furs and in-Your Inspection of this Line

N. K. WEST

THE QUALITY STORE.

4,000 TREES FOR ORCHARD

EIGHTY ACRE TRACT NEAR EMILY TO Be PLANTED.

Big Shipment Is Now Here and the Planting to Commence Soon.

Messrs Cleaver and Bridges today received 4,000 winter apple trees from the Milton nursery and if the weather remains settled for a few days they will set out their 80-acre tract which they recently purchased from McDonald Bros., between Alicel and Mr. Emily. These men are enthusiastic fruit men and are doing a great deal to bring the advantages of Union county as a fruit producing section before the people.

BIG FREIGHT FORCE

ELEVEN MEN NOW REQUIRED TO HANDLE LOCAL FREIGHT.

Four Added to the Regular Crew at the O. R. & N., Freight House.

Four more men have been added to the freight department within the last few days bringing the total force up to eleven men. The steady increase in the freight shipments over the entire line and the extending of the branch line into Wallowa county creates a great deal more work for the La Grande office.

FURNITURE FOR HOTEL

NEW CENTRAL HOTEL WILL BE FULLY EQUIPPED.

New Structure Will Be Opened About One Week After the First.

The new Central hotel received its full supply of furniture today and active steps are being taken to get the hotel fitted up for the opening. It is now thought that the hotel will be ready for opening about one week after December first.

The strategic location as well as the quality of the M. & M., building makes it especially adopted for hotel purposes. Mr. Rogers who is to manage the hotel announces that he is furnishing the house with furniture in keeping with the modern building.

(Continued from page 1.)

RECORD RAIN.

slow on account of the soft bed. Remarkably enough the dangerous cuts in the river canyons have withstood the rains thus far.

Telephone Wires Down.

Telephone wires seem to have suffered the severest. Telegraph wires were put into service last evening and have been doing fairly good service throughout the day with occasional breakdowns.

BOUGHT A HOME.

Fred Bock, recent Arrival Here Buys A Residence on Sixth Street.

Fred Brock who recently returned to this city from Portland and associated himself with the La Grande Meat Company has purchased a residence on Sixth street adjoining the A. E. Stephens property. Fred says that he is in La Grande to stay this time and is going to start in by owning his own home.

Van R. Mendels down from Sumpter today to attend the funera of the late David Hawes.

We Have It A Complete Stock of Feed, Grain, Baled Hay, Straw and Wood

Order your FLOUR with your Feed

Waters-Stanchfield Produce Co.

1410 Adams Ave. PHONES: Black 1211 Independent 541

Complete equipment for resetting and repairing rubber buggy tires.

LA GRANDE IRON WORKS

D. FITZGERALD, Proprietor Complete Machine Shops and Foundry

and Handsome Pillows Art Materials Novelties for Christmastide

E. M. WELLMAN & CO. ADAMS AVENUE

ONYX HOSIERY



COTTON WOOL SILK

All Grades

Everything in Footwear

SMITH & GREEN

Monarch MALLEABLE

The 'Stay Satisfactory' Range

HOWARD HEATING STOVES

Howard wood and coal grates will burn either wood or coal

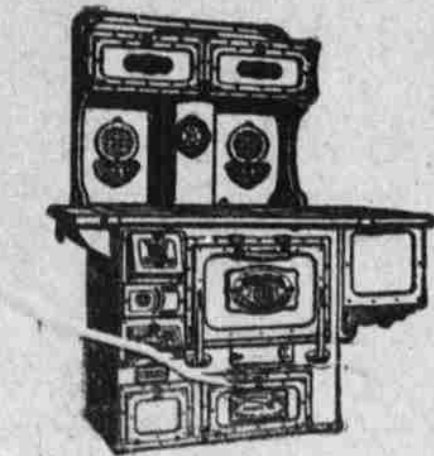
Have wood and coal grates and burn either wood or coal! No one expects to buy strictly high grade goods at the price of "cheap stuff," but some think that a high price guarantees high quality. Don't make a mistake in buying a range. Many ranges of ordinary construction are priced high or even higher than the incomparable Monarch.

WHEN YOU BUY A RANGE

Find out what it is made of! You have a right to know these things. Any man selling ranges who says, "Our range is a fuel-saver—a perfect baker," and stops there, casts a reflection on your intelligence. If these things are true of any range, there is a reason for it—a reason you can see and understand—a reason you have a right to know before buying.

We can show in a Monarch range exactly why it does what we claim. Come and see how the Malleable iron and steel plates are riveted solidly together, insuring a tight range for unlimited time. Let us explain how tight, permanent seams are possible only in ranges where Malleable iron is used. We can show you how tight, solid construction is necessary to everything you want most in your new range—prompt, sure service—long life—and fuel economy.

W. H. BOHNENKAMP CO



SOME SPECIAL MONARCH FEATURES

- Polished Top. Needs no stove blacking.
- Duplex Draft. The only common-sense draft system in use.
- Complete Asbestos Lining. A triple wall at every point exposed to heat.

Land Fraud Cases Postponed.

Portland, Nov. 23—Oregon land fraud cases were postponed again today awaiting for word from Henry Worthington, the representative of Hermann.

Observer Want Ads Pay

Daily Observer, 65c per Month

WE HAVE SECURED SHERMAN CLAY'S full line of PLANOS and ORGANS

The musical instrument that sells strictly for one price to everyone

Scott Music Co.