

# THEATRICAL

One of the most handsomely equipped musical plays on the road this season is W. P. Cullen's production of "The Burgomaster," the greatest of the Pixley & Luder musical comedies. The costumes are of the most modern style, and it can be safely promised that some of the evening gowns will be well worth seeing. The large company will be headed by Harry Hermsen and Ruth White. Miss White's

Anti-Saloon League. Birmingham, Ala., Feb. 2.—Jubilant at having driven the "rum demon" from Alabama, Georgia, North Carolina, Mississippi and Tennessee, the workers of the Anti-Saloon league are gathering here today for a conference at which they will agree upon plans for carrying the warfare into the remaining wet states of Dixie. The Alabama State Anti-Saloon league will

## DELINQUENT TAX LIST

(Continued from page 2.)

N 80 rods to beginning	7.90
ROLLINS, W. M.—	
The 8 1/2 SE 1/4 of section 8, township 1 S, R 40, E W M	5.90
ROCKMAN, CHAS.—	
Lot 5, township 5, block 25, Sterling's 2nd Add to Island City	5.55
R. E. LOAN & C. CO.—	
Lots 1 to 3, section 22, township 2 S, R 37, E W M	6.60
ROBES, MRS. S. J.—	
The 1/2 NW 1/4, NW 1/4 SW 1/4 of section 15, township 2 S, R 37, E W M	4.80
REMMER, MABLE E.—	
The NE 1/4 SE 1/4 of section 14, township 1 N, R 28, E W M	1.65
RUCKMAN, M. J.—	
Lots 1 to 5, block 7, and lots 1 to 5, and 16 to 20, block 24, Imbler, Oregon; and lot 10, block 15, Summerville	8.22
RAYMOND, MRS. HARRIETT—	
Lots 9 and 10, block 17, Railroad Add to Union	.80
ROSE, WALTER E.—	
Lots 1 to 3, and 22 and 24, block 39, Hindman's Add to Elgin	4.08
RUGG BROS.—	
The NW 1/4 of section 20, township 2 S, R 36, E W M	3.55
RINGER, D. W.—	
The NW 1/4 of section 10, township 6 S, R 41, E W M	7.92
SMITH, ELIGAH, ESTATE—	
Lot 5, block 1, Elgin, Oregon	6.87
SMITH, T. E.—	
Lots 1 to 8, block 13, N Elgin	23.45
SMITH, JOHN—	
The 8 1/2 NW 1/4 and NW 1/4 SW 1/4 of section 10, township 3 N, R 29, E W M	10.55
SPORES, SAMUEL A.—	
Five acres off W side of SE 1/4 NW 1/4 of section 12, township 2 N, R 40, E W M	.35
STEEL, R. M. & CO.—	
The NE 1/4 SW 1/4, SE 1/4 NW 1/4 and SW 1/4 NE 1/4 of section 29, township 2 N, R 39, E W M; lots 13 and 14, block 1, and lots 1, 2, 4 and 5, block 7, and 1 to 6, block 8, lots 7 to 9, and N end of 10, and lots 11 to 14, block 2, in Hilgard, Oregon	19.60
SANFORD, D. W.—	
Lots 9 and 10, block 1, and lot 7, block 8, Hilgard, Ore.	2.45
SHROPSHIRE, H. A.—	
The E 1/2 SE 1/4 and SW 1/4 NE 1/4 of section 24, and NW 1/4 NE 1/4 of section 25, township 2 S, R 36, E W M	7.90
SHROPSHIRE BROS.—	
The 8 1/2 40 feet of lot 10, block 2, Hilgard, Oregon	27.40
SCOTT, J. W.—	
Lots 6 to 8, block 3, Hilgard, Oregon	2.55
STARBUCK, C.—	
The 1/2 SW 1/4, the SW 1/4 NW 1/4 of section 16, township 2 S, R 38, E W M	7.90
STERLING, M. ESTATE—	
All of NW 1/4 NE 1/4 lying S of block 4, 5 and 12, Sterling's Add to Island City, in section 2, township 3 S, R 38, E W M, and 13 acres in a square in SE corner of NW 1/4 of section 23, township 2 S, R 39, E W M; lots 5 to 8, block 9, and lots 5 to 8, block 10; and lots 5 to 8, block 11, Sterling's Add to Island City	18.75
STERLING, HENRY—	
The NW 1/4 SE 1/4, the SW 1/4 NE 1/4, and 15 acres off E 1/2 of NW 1/4 NE 1/4 of section 3, township 3 S, R 38, E W M	41.70
SIMMONS, MRS. EMMA—	
The NW 1/4 of section 19, township 3 S, R 39, E W M; and lots 7 to 9, block 42, Chaplin's Add to La Grande	166.10
SMITH, MARY—	
56 feet lying E of line 40 feet from W side of lot 4, block "C," Cogan's 2nd Add to La Grande	1.33
SMITH, ROBERT E.—	
The SE 1/4 NE 1/4 and E 1/2 SE 1/4 of section 24, the SW 1/4 NW 1/4 and 8 1/2 SE 1/4 NW 1/4, the NW 1/4 SW 1/4, E 1/2 SW 1/4, the SE 1/4 NE 1/4, and SE 1/4 of section 25, the SW 1/4 NW 1/4 and NW 1/4 SW 1/4 of section 23; the NE 1/4, and NE 1/4 NW 1/4 of section 27, all in township 4 S, R 40, E W M	24.57
SNYDER, MARY J.—	
Lots 18 and 19, block 20, Predmore's Add to La Grande	3.73
SPRINGFIELD, JOHN—	
Lots 8 to 8, block 10, Home Investment Add to La Grande	3.30
STACEY, MRS. ARDELIA—	
Lot 5, block 46, Riverside Add to La Grande	3.60
STANLEY, GEO. A.—	
Lots 17 to 15, block 138, Chaplin's Add to La Grande	3.73
STAPLES, C. A.—	
Lots 1 to 2, block 2, and 15 feet of lot 4, block 2, Hilgard, Oregon	3.95
SWARTS, H. W.—	
Lots 14 to 16, block 141, Chaplin's Add to La Grande	30.70
SHAW, ALEX.—	
The N 1/2 NE and N 1/2 NW 1/4 of section 16, township 5 S, R 28, E W M	7.92
S. W. B. CO.—	
Lots 7 to 10, block 21, and lots 22 to 24, block 15, Imbler, Oregon	2.83
STANLEY, MRS. ARNICE—	
The NW 1/4 of section 35 and NE 1/4 NE 1/4 and 3 1/2 acres of NW 1/4 and SE 1/4 of section 34 township 1 S, R 38, E W M	119.55
SWENGER, MABEL—	
Commencing 260 feet N of NE corner of block 2, in Lewis' Add to North Union, then N 90 feet W 200 feet, S 90 feet, E 200 feet to beginning	14.67
SLATER, R.—	
Commencing at NW corner of lot 8, block 5, West Union, then S 90 feet, E 60 feet, N 90 feet, W 60 feet to beginning	17.33
SMITH, MARY—	
The N 1/2 NE 1/4 of section 9, and NW 1/4 NW 1/4 of section 10, township 5 S, R 41, E W M	7.92
STARK, L. C.—	
Block 29, Swackhammer's 2nd Add to Union (N 1/2)	9.86
STATHERS, A. R.—	
Lots 17 and 18, block 12, Alcega, Oregon	.18
STACKLAND, A. M.—	
Commencing at SE corner of SW 1/4 NE 1/4 of section 22, township 3 S, R 40, then N 20 rods, E 32 rods, N 2 rods, E 12 rods, S 2 rods, E 116 rods, S 20 rods, W 150 rods to beginning; the NW 1/4 SW 1/4 of section 23, the NE 1/4 SE 1/4 of section 22, township 3 S, R 40, E W M	26.70
SNOW, EDWARD—	
The SW 1/4 NW 1/4 and NW 1/4 SW 1/4 of section 29, township 2 N, R 41, E W M; lots 1 to 6, block 1; lots 2 to 4, block 2; lots 1 to 4, block 3; lots 1 to 8, block 4; and lots 1 to 5, block 5; lots 2 to 7 and 10, block 6; lots 2 to 5, block 7, Minam City	16.05
STEVENS, MISS NELLIE—	
Lots 1 and 2, and 7 and 8, block 3, N Union; and lots 19 by 40 feet in SW corner of lot 8, the W 40 feet of lots 9 and 10, blocks 9, Grandy's Add to La Grande; lots 19 and 20, block 25, Williamson's Add to La Grande	42.42
SETH THOMAS CLOCK CO.—	
The N 1/2 of lot 3, block 5, Cogan's Add to La Grande	3.45
SMITH, J. B.—	
Lot 8, block 61, Chaplin's Add to La Grande	32.04
STODDARD, H. C.—	
The SE 1/4 of NW 1/4 of section 26, township 2 S, R 37, E W M	1.98
SIMMONS, J. A.—	
The W 1/2 NW 1/4 of section 14, and E 1/2 NE 1/4 of section 15, township 3 S, R 34, E W M	8.50
SETTLEMIRE, F. W.—	
Lots 3, 5 and 9, block 8, Hannah's Add to Union	4.00
SNYDER, JACOB—	
Commencing 222 feet E of SW corner of NW 1/4 of section 18, township 4 S, R 40, E W M, then E 90 feet, N 660 feet, W 90 feet, S 650 feet to beginning	11.75
TURNER, A. P.—	
Lots 1 to 6, block 70, Hindman's Add to Elgin	19.33
TINSLEY, S. T.—	
The NW 1/4 of section 15, township 2 S, R 36, E W M	6.60
THOMPSON, LILLIAN—	
The E 1/2 SE 1/4 of section 30, township 3 S, R 38, E W M	4.95
TAMARIUS, A.—	
Commencing at a point 106 2-3 rods S of the center of section 26, township 1 N, R 29, E W M, then S 53 1-3 rods, W 58 rods, N along center of county road to a point 57 rods 10 feet W of a point of beginning, then E 57 rods, 10 feet to beginning	2.97
TOMBLESON, CHAS. E.—	
Commencing 945 feet S and 462 feet W of the NE corner of NW 1/4 SW 1/4 of section 19, township 4 S, R 40, E W M, then S 124 feet, W 350 feet, N 124 feet, E 350 feet to beginning	2.67
TAYLOR, J. L.—	
The E 1/2 SE 1/4 of section 1, township 2 S, R 37, E W M	2.64
TUCSCOTT, JOSE—	
The 3 1/2 SW 1/4, W 1/2 SE 1/4, section 24, township 4 S, R 35, E W M	7.92
TUCKER, JOHN A.—	
Lots 1 and 2, and 7 and 8, block 7, Hannah's Add to Union, Oregon	5.60
UNKNOWN—	
Lots 1 to 6, block 14, North Elgin	3.05
UNKNOWN—	
Lots 21 and 22, block 22, North Elgin	1.02
UNKNOWN—	
Lots 15 to 21, block 14, North Elgin	5.10
UNKNOWN—	
Lots 24, block 35, Hindman's Add to Elgin	.75
UNKNOWN—	
Lot 17, block 23, North Elgin	.51
UNKNOWN—	
Fractional part of block "A," North Elgin	.77
UNKNOWN—	
Lots 8 and 9, block 6, Minam City	.65
UNKNOWN—	
SE 1/4 SW 1/4 of section 21, township 3 S, R 36, E W M	1.30
UNKNOWN—	
Lot 8, block 8, Hilgard, Oregon	.15
UNKNOWN—	
The NW 1/4 SE 1/4 of section 18, township 2 S, R 37, E W M	1.63
UNKNOWN—	
Lot "A," Cogan's 2nd Add to La Grande, all W of O R & N railway	1.06
UNKNOWN—	
Lots 1 to 4, block 14, Williamson's Add to La Grande	1.59
UNKNOWN—	
Lot 11, block 8, New Haven Add to La Grande	2.67
UNKNOWN—	
Lot 1, block 34, Chaplin's Add to La Grande	1.06
UNKNOWN—	
Lot 2, block 4, Rynearson's Add to La Grande	.52
UNKNOWN—	
The W 1/2 of lots 1 to 3, block 11, Romig's Add to La Grande	4.66
UNKNOWN—	
The 8 1/2 SE 1/4 NE 1/4, and NE 1/4 SE 1/4 NE 1/4 of section 14, township 1 N, R 38, E W M	1.48
UNKNOWN—	
Lot 5, block 12, Summerville	.45
VAN HOOK, MRS. J. M.—	
The W 1/2 SE 1/4 NE 1/4 and N 1/2 NE 1/4 SE 1/4 of section 4, township 3 S, R 38, E W M	46.23
VAN DE BOGART, ASA—	
Lot, block "A," New Haven Add to La Grande	2.93
WARBURTON, ROBT.—	
The E 1/2 SW 1/4, SW 1/4 SE 1/4 of section 15, the N 1/2 NW 1/4 except NE 1/4 NW 1/4 NW 1/4 of section 24, township 3 S, R 40, E W M	22.62

(Continued on page 6.)



RUTH WHITE AS "WILLIE" IN "THE BURGOMASTER."

beautiful soprano voice will be heard to great advantage in a new song, written entirely by herself, entitled "How Many Have You Told That To?" "The Burgomaster" will be seen at the Steward Wednesday, February 3.

hold a public meeting here the latter part of the week.

### Eskimo Enters College.

New York, Feb. 1.—Mene Wallace, the only survivor of the party of Eskimos brought to this country from Greenland 12 years ago by Commander Feary, today entered Manhattan college, in order to prepare himself to become a teacher of his own people. He is now 18 years of age. All of the Eskimos who came with him died of tuberculosis.

### Postpone Heine Trial.

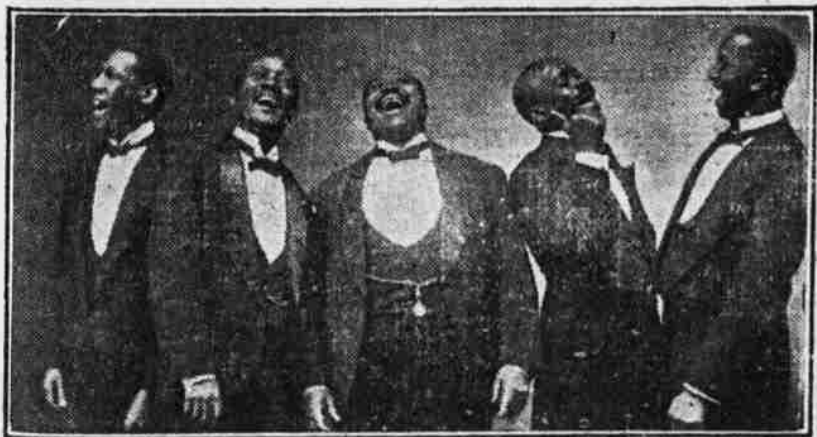
New York, Feb. 1.—F. Augustus Heine, the "copper king," accused of violation of the federal banking laws, will not be tried this month as had been expected. The case will probably come up in March.

### Amend Los Angeles Charter.

Los Angeles, Feb. 2.—Twenty-nine

## LOW PRICE FOR CONCERT

Fifty and 25 cents are the very reasonable ticket prices for the Dixie Quintet at the Steward next Thursday night under direction of the Barcab club of this city. While the attraction is ostensibly worth more than the es-



The Dixie Quintet, Coming to the Steward February 4, is Classed as the Best of Its Kind on the Road.

established price, the men having the concert in charge, believe they will be able to accommodate more students than with the higher prices. The "niggers" are classed as the best in their line now on the road, consequently the public will be treated to a series of melodies that will please the ear.

amendments to the city charter of Los Angeles are being voted on at a special election today. One of the amendments provides for the election of councilmen-at-large instead of by wards. Twelve make increases in the salaries of city officials. Annexation of adjoining towns and territory to Greater Los Angeles will also be decided.

### Leavitt Divorce Case.

Lincoln, Neb., Feb. 2.—Mrs. Ruth Eryon Leavitt's divorce suit against her artist husband, will likely come up for final disposition this month. No contest is expected, and Mrs. Leavitt will undoubtedly be given the custody of her two children.

FOR SALE—Fresh Jersey cow. Call Black 1641. 1-11f

## PASTIME THEATRE

D. R. ECCLES, Proprietor  
Leading Amusement House

### NEWEST MOTION PICTURES

### Unexcelled Vaudeville

**This week Pictures Today**

**CLIFFORD & CLIFFORD:** In Old Arizona.  
**King and Queen of Handcuffs.**  
**Australian Trunk Mystery.** The Professor's Love Tonic.  
**Chinese Yoke of Torture.**  
**Mexican Stake of Torture.** To Actor's Baby Carriage.

3 Performances Nightly at 7:15, 8:15 and 9:15  
MATINEES Wednesday and Saturday at 3 P. M  
CHANGE PROGRAM Monday, Wednesday and Friday

## EXTRA---SPECIAL

### STEWART OPERA HOUSE

# ONE MERRY NIGHT

## Wednesday, February 3rd

Wm. P. Gullen's Sumptuous Presentation of the Pixley and Luber Gomic Opera

# THE BURGOMASTER

With Ruth White "The Original Willie Van Astorbill"  
**Harry Hermsen** As The BURGOMASTER

With an Exceptionally Clever Company [of over half  
**A 100 Comic Opera Stars**  
Including That Spick Span Saucy Chorus of  
**Kangaroo Girls**  
The Largest Comic Opera Organization Entour. The season Musical and Social Event. Prices; 50c; 75c; \$1.00; \$1.50  
Seats on Sale Monday.

## Everybody's Magazine

**HAS GOT THIS MONTH**  
Two screaming stories by Ellis Parker Butler and Lindsay Denison, each racing to see which will bump your funny bone hardest.  
One tragedy that will grip your heart.  
And articles by Russell, Paine and Dickson that cut deep into things.  
**LOOK OUT FOR EVERYBODY'S THIS MONTH. THE CAT IS BACK**

## Merchants! Save \$10,000

In 1907 the Merchants of Oregon saved over \$10,000 by carrying a part of their insurance in their own company, the Oregon Merchants Mutual Fire Assurance Association, of Dayton, Oregon. In 1908 they will save \$15,000. During the same period their neighbors were handing over \$1,500,000 in profits to outside companies  
**In the Oregon Merchants Mutual you get: INSURANCE AT COST A LIMIT TO YOUR LIABILITIES PROMPT SETTLEMENT OF LOSSES**  
J.W. OLIVER, Agent

## THE SCENIC

- ON PANTAGES CIRCUIT.
- S. A. GARDINIER, Proprietor and Manager.
- HIGH CLASS VAUDEVILLE
- LATEST MOVING PICTURES.
- Change of Program Mondays, Wednesdays and Fridays.
- Four Late Pathe Films.
- Reisner & Gore, character impersonators, singers and dancers, including the latest New York success, "My Brother, Sylvus."
- Matinee prices as usual.
- Matinees: Tuesday, Thursday and Saturday afternoons at 2:30
- Children under 15 years of age 5c at matinees.
- Evening prices: Adults, 15c; children, 10c.

### CHICKENS WANTED

We pay the highest market price for chickens. Both 'phones, No. 6. GRANDE RONDE CASH CO.

### Chamberlain's Cough Remedy the Most Popular Because it is the Best.

"I have sold Chamberlain's Cough Remedy for the past eight years and find it to be one of the best selling medicines on the market. For babies and young children there is nothing better in the line of cough syrups," says Paul Allen, Plain Dealing, La. This remedy not only cures the coughs, colds and croup so common among young children, but is pleasant and safe for them to take. For sale by all good dealers.