

STEWARD'S OPERA HOUSE

B. H. STEWARD, Proprietor

Saturday, January 16th

THEATRICAL ANNOUNCEMENTS

What the Press of the Country Say:

"Simply superb."
—N. Y. Herald.

"A sweeping success."
—N. Y. Mail.

"An enthusiastic success."
—N. Y. (Eve.) World.

"A wonderful play."
—N. Y. (Eve.) Sun.

"Will live as long as Hamlet."
—Phila. Press.

"An intensely interesting drama. Worth going miles to see."
—Chicago American.

"Mr. Miller has a genuine success at his command."
—Boston Herald.

"Superior to anything ever done in this country."
—St. Louis Dispatch.

"Original, daring and typically American play. It grips and holds the audience."
—Cincinnati Enquirer.

Henry Miller

PRESENTS

"The Great Divide"

"The Long Awaited Great American Play."
(N. Y. Press)

By WM. VAUGHN MOODY

As produced at the Princess and Daly's Theatres and Academy of Music, New York, for more than 500 times.

What the Press of the Country Say:

"Absolute triumph."
—N. Y. Sun.

"A great success."
—N. Y. Tribune.

"Real dramatic success."
—N. Y. Journal.

"Tense, dramatic, and superb."
—N. Y. American.

"The most signal dramatic achievement of the decade."
—Phila. Record.

"A powerful play, beautifully acted. A new mark in American drama."
—Chicago Record-Herald.

"Tackles a big problem in a big way."
—Boston Globe.

"The big American play of the year."
—St. Louis Republic.

"Will always be referred to as the great American play."
—Cincinnati Post.

PRICES: Orchestra \$1.50; Orchestra Circle \$1.00; Dress Circle 75c; Gallery 50c, Seats on Sale Thursday.

Steward Opera House Tuesday Jan. 19

THE HIT OF THE SEASON

The PREMIER MUSICAL EVENT of the YEAR
Victor Herbert and Glen MacDoug's Phenomenal Musical Extravanza Success

"Babes in Toyland"

Among the Talented Cast You Will Find

Eddie Redway as Alan
(The original Gingerbread man)

Gen Ormond as Jane
(Late with Gingerbread Man.)

Helen McLeod as Tom Tom
(Last season with Gingerbread Man.)

Beth Tate as Contrary Mary
(Late prima donna with H. W. Savage.)

Gus Pixley as Marmaduke

John F. Ward as Barnaby

Will H. Hatter as The Toymaker

Ida Ward as Mrs. Piper

All of the Great Original Cast of "Babes in Toyland."

also

MAY BURDOCK, GERTRUDE LAWRENCE and the BEST SINGING CHORUS EVER ON TOUR

aided by

AN AUGMENTED ORCHESTRA

PRICES: Orchestra \$1.50; Orchestra Circle \$1.00; Dress Circle 75c; Gallery 50c. SEATS ON SALE SUNDAY MORNING

The PASTIME THEATRE

D. R. ECCLES, Proprietor

Motion Pictures and Illustrated Songs

UP-TO-DATE SPECIALTIES.

PROGRAM

- ✦ Haunted Lounge. ✦
- ✦ The Neighbors' Kids. ✦
- ✦ Miss Richards, Sword dance. ✦
- ✦ School Days. ✦
- ✦ Tyrant's Dream. ✦
- ✦ The Tenderfoot. ✦
- ✦ The Richards, Dancers. ✦
- ✦ ORCHESTRA. ✦

LADIES' SOUVENIR MATINEE WEDNESDAY AT 3 P. M.
CHILDREN'S 5c MATINEE SATURDAY AT 3 P. M.

Program Changes: Monday, Wednesday and Fridays

Notice of Final Account.

Notice is hereby given that the undersigned has filed in the county court of Union county, state of Oregon, his final account of his administration of the estate of J. M. McCall, deceased, and that the said court has ordered that said final account be heard by said court at the usual place of holding said court at the court house in La Grande, in said county,

on the 16th day of February, 1909, at 10 o'clock a. m. of said day, at which time and place any person interested in said estate may appear and file objections to said account, if any he have.

Dated, January 9, 1909.

ULYSSES G. COUCH,

Administrator of Said Estate.

RAMSEY & OLIVER, 1-11-2-S
Attorneys for the Estate.

"The Great Divide" Tonight. Henry Miller, the distinguished actor-manager, will bring "The Great Divide," which has won recognition as "the long awaited 'great American

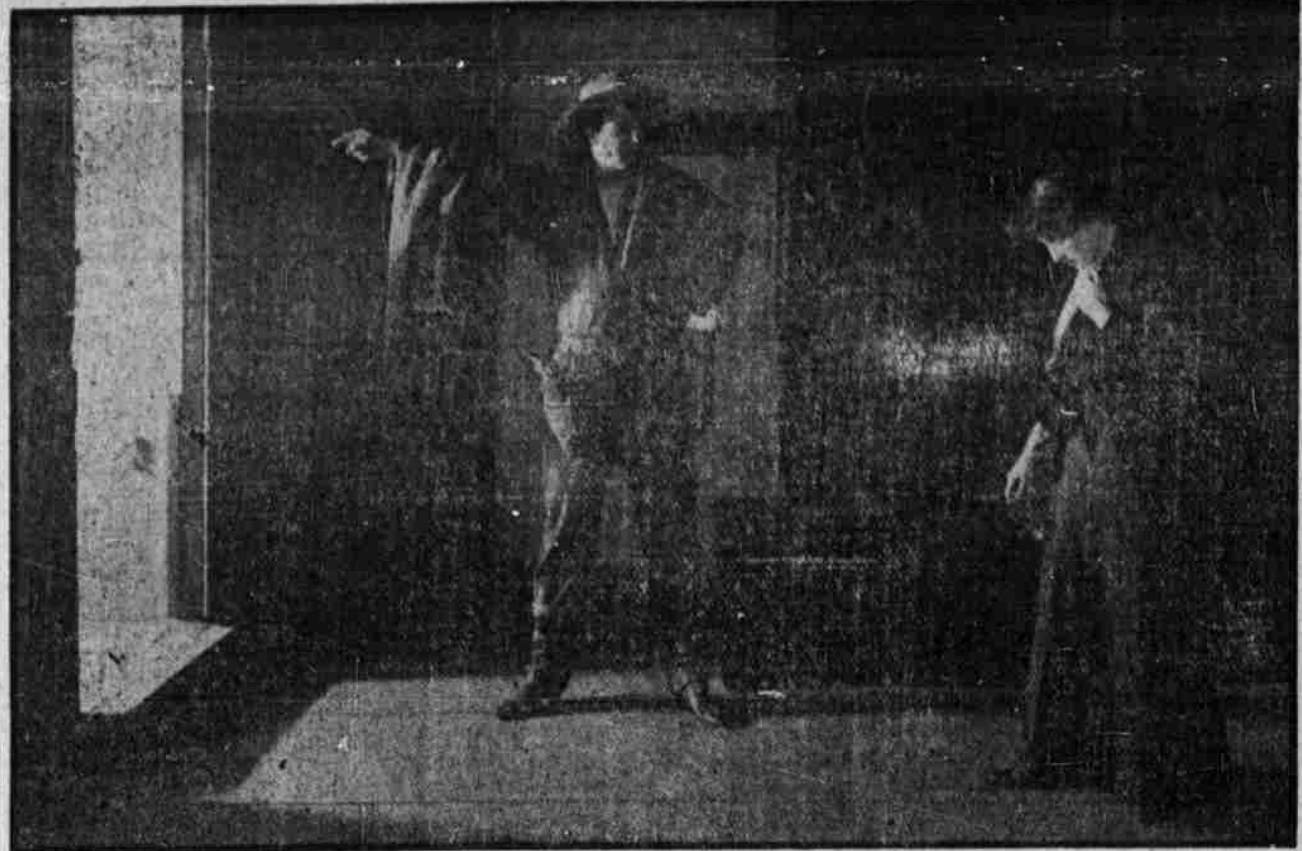
An eastern woman, weighted down by generations of tradition and conventionality, is strangely wooed and still more strangely won by a western man unfettered by custom and igno-

"Babes in Toyland," which is announced for presentation at the Steward Tuesday night, January 19, is undoubtedly the most important musical event of the season at this popular

plant libretto by Glen MacDonough, set in a gem of musical excellence by the talented composer, Victor Herbert. The exquisitely ornate setting and regal costumes are a fitting framework for the inimitable stagecraft of America's greatest producer of unique enchantments of stage and film, Julian Mitchell, who is responsible for the production of this, the best of all musical productions of late years.

"Shores Across" January 27.

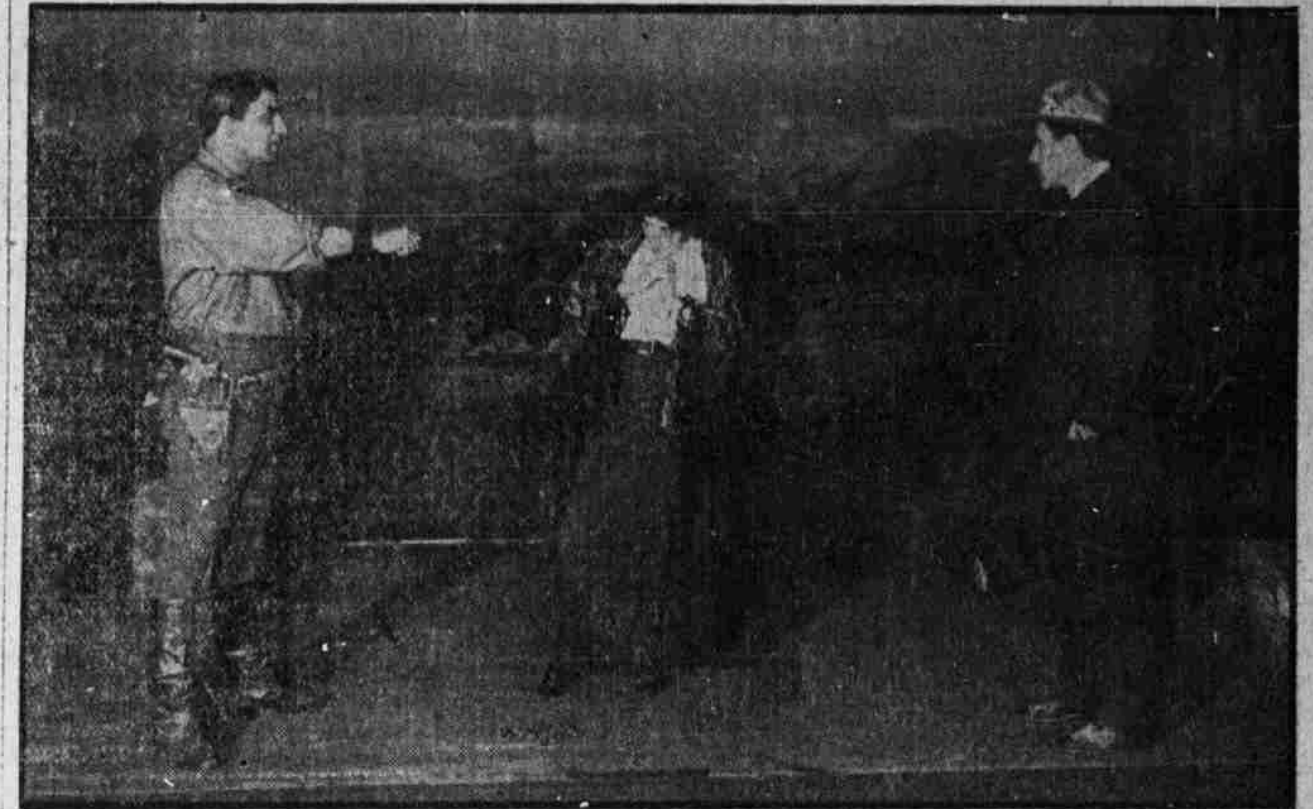
The great rural play, "Shores Across" is soon to be seen here. There is a balmy, autumnal atmosphere ever hanging over "Shores Across." It is a symphony of ripened grain and red leaves. It springs upon one with the subdued hum of birds and takes one through the woods, as it were, out into the country. It strikes home to the hearts of the people and that accounts for its great lasting powers. Archie Boyd, the great character actor and a first-class company, with all new scenery, will be seen here at the Steward Wednesday, January 27. In addition to Mr. Boyd, a daughter of the late James A. Herne, the author of the play, and who appeared in the play for many years, plays the part of the sweet, innocent young girl—in fact, the heroine of the play.



A Scene From Henry Miller's "The Great Divide."

play." to the Steward Saturday, January 16. The coming of this famous drama, which has recently been presented at the Princess and Daly's theaters in New York for over 500 performances, has for some time been held by our playgoers as a bright spot in the indefinite theatrical future, and this positive announcement of the date of engagement will be greeted with pleasure. "The Great Divide" has added much to the celebrity of Mr. Miller as a producing manager and brought from dramatic obscurity into permanent renown an author who will have to be reckoned with from now on in the American drama. William Vaughn Moody had already become established as this country's leading young poet, and through his occupancy of the chair of English in the University of Chicago, his several publications relating to the language have long been quoted as an authority upon English literature. But until Mr. Miller produced "The Great Divide," even Mr. Moody's best friends never suspected that the brilliant young poet could write a play which would be not only the most successful of its kind from a pecuniary standpoint, but which would also be declared by leading critics to "set a new mark in American drama." New York's verdict has been that, original, dominant and fascinating as Mr. Moody's play is, the author is under an overwhelming debt to Mr. Miller for the superb and illuminating way in which he developed its artistic possibilities, and to his superb company for their remarkable portrayal of the difficult characters. "The Great Divide" could easily have been ruined by less sympathetic presentation than was given under the painstaking direction of Mr. Miller. The play is in three acts, the first two being represented as taking place in Arizona and the third in Massachusetts. In a way, the drama is a conflict between the spirit of the east and the spirit of the west.

ant of restraint of mind or action. The mating of these opposite natures provokes great storm and stress, and is intensely interesting and



Scene in Henry Miller's "Babes in Toyland" at the Steward Opera House Saturday, Night, January 16.

highly dramatic situations. One must see this masterful exposition of American manhood and womanhood as portrayed in this really great play to understand adequately how the storms are weathered and the problem solved.

"Babes in Toyland."

The gorgeous operatic extravaganza.



Scene from "The Great Divide."

THE SCENIC

- ✦ ON PANTAGES CIRCUIT. ✦
- ✦ S. A. GARDINIER, ✦
- ✦ Proprietor and Manager. ✦
- ✦ HIGH CLASS VAUDEVILLE ✦
- ✦ LATEST MOVING PICTURES. ✦
- ✦ Change of Program Mondays, ✦
- ✦ Wednesdays and Fridays. ✦
- ✦ The Roma: Idyll. ✦
- ✦ No Pettecats for Him. ✦
- ✦ The Intertain Grand Prize. ✦
- ✦ Automobile Race. ✦
- ✦ Fletcher and La Pierre, vaudeville artists. ✦
- ✦ Matinee prices as usual. ✦
- ✦ Matinees: Tuesday, Thursday ✦
- ✦ and Saturday afternoons at 2:30 ✦
- ✦ Children under 15 years of ✦
- ✦ age 5c at matinees. ✦
- ✦ Evening prices: Adults, 15c; ✦
- ✦ children, 10c. ✦

DENTIST

YOUR Teeth are vitally important to you. Are you neglecting them? If it has been a matter of cost which has caused you to put off visiting the Dentist, that excuse no longer exists.

Bridge work requires skill and judgement, but the cost should not be prohibitive. Call at my office and have your teeth examined and receive an estimate. It may be that timely attention may save you many dollars.

The La Grande Dental Parlors are not in any combination to control prices. All work has my personal guarantee and 16 years practical experience is at your disposal.

WE ARE HERE TO STAY

J. E. STEVENSON, D. D. S.

111-113-115