

AN INTERESTING SUMMARY OF LOCAL INDUSTRIAL ADVANCES

OLD YEAR, GOODBY!

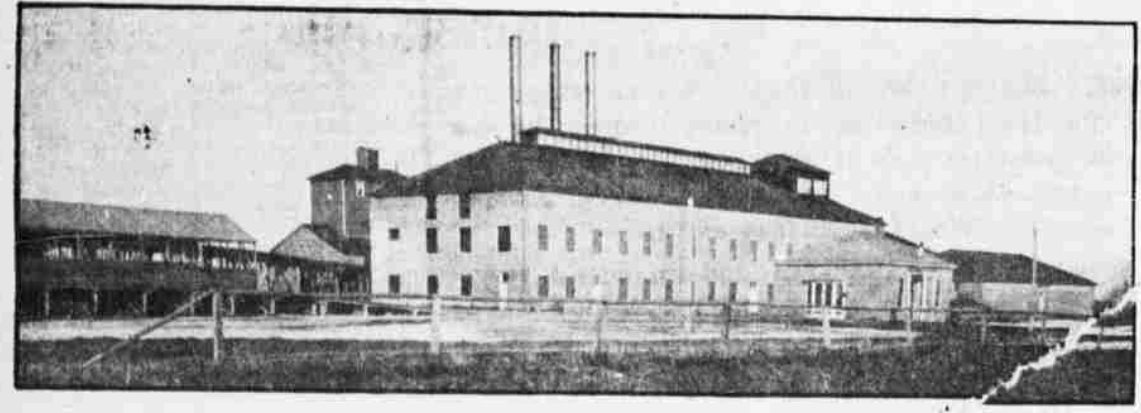
Old Year, Goodby! Time bids thee go—
The final hour is drawing nigh—
And veiled in mist or wan with snow,
Old Year, Goodby!

Pledge we at parting one brief sigh,
Touched with the tender after glow
Of days that blossomed but to die.

Beyond our present joy or woe,
Horizons of the future lie—
Whither thou goest none may know—
Old Year, Goodby!

William H. Hayne--

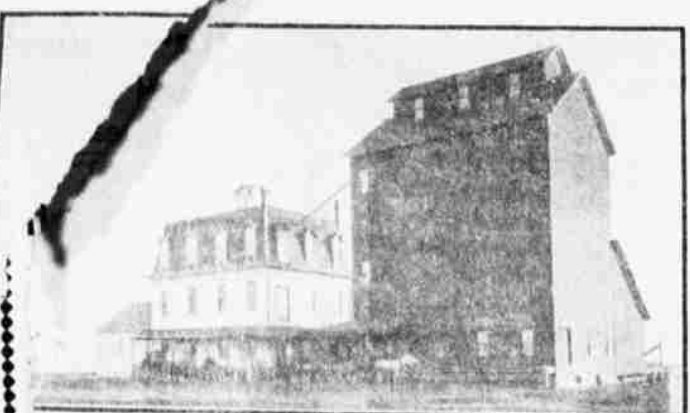
We greet thee, O New Year! We bless its religious homes. Plans are now being drawn for two additional churches and it will not be long that the Latter Day Saints and the Baptists can say they alone have splendid church homes. Dwelling houses, by the scores, have been erected during the past year, a large per cent of which are beautiful and expensive. Ground has



BEET SUGAR FACTORY AT LA GRANDE.

To paraphrase the lines of the poet, we know not whether the old year goeth, but we do know that the year of our Lord nineteen hundred six did leave behind it, a record of unprecedented advance in prosperity, in every line of industry and business that graces La Grande's directory. Not only do inventories of present industries show a marked increase, but new and varied desiderabilia have been instigated, promulgated and culminated. Following are facts and figures carefully and comprehensively compiled that do, in a meagre way, tell of the reasons why we should truly, honestly and conscientiously, be

broken for another, new store and office building, and more will soon follow. This valley by the trainload. Our altitude and climate is such that in comparison with so many of the fruit sections of the northwest the varieties grown in this section are sound and in perfect condition

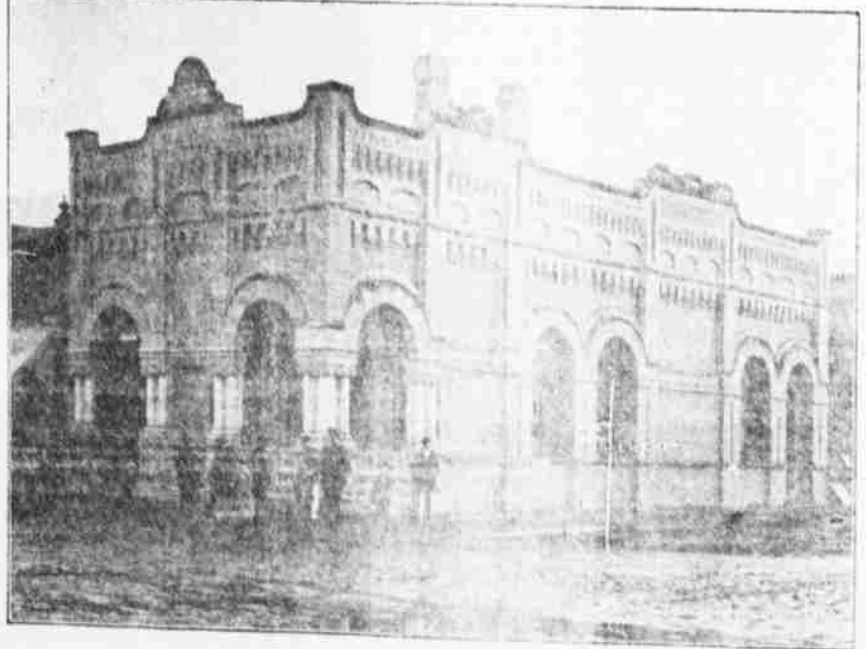


FLOUR MILL AT LA GRANDE

ings have been planted each year and many-acre orchards are becoming

PAPER HANGER and DECORATOR

Phone Black 1781
La Grande Ore.



FARMERS & TRADERS NATIONAL BANK

the deposits made in La Grande banks at the last statement of business, November 12, 1906, was \$1,013,419.78. On November 9, 1905, the deposits in banks of this city were \$671,964.00.



LOOKING OVER PART OF LA GRANDE'S RESIDENCE DISTRICT.

This represents an increase of \$341,455, or just fifty per cent, during the year. La Grande's three banks are no small factors in the development of this city and county and all show a splendid increase in business over last year. The La Grande National Bank and the Farmers & Traders National Bank each occupy their own building, the cuts of both appearing elsewhere in this issue.

THE FRUIT INDUSTRY

This industry is making wonderful growth. It was only a few years ago when two or three car load shipments were sufficient to create considerable comment and many wondered if the business was not soon going to be over done. Fruit shipments are now so common that they create no more comment than do our lumber shipments. Within the next few

common, several exceeding 160 acres. Like everything in this new country, the fruit industry is young, but growing.

SUGAR BEET INDUSTRY

This industry is the only one of the kind in the state and thousands of dollars are annually disbursed among the growers and employees of the factory, which is located in this city. The beets are grown in various portions of the valley and hauled to the factory by wagon and rail. The acreage will be greatly increased this year owing to the fact that the Cove section of the valley is connected with the world by the completion of the Central Railroad. Several hundred tons of beets were grown this year in the Cove and the yield was satisfactory. During the operating season of the factory about one hundred and fifty men are employed and no less than \$150,000 is annually disbursed for beets



CITY HALL LA GRANDE USED AS COUNTY COURTHOUSE

THE SCHOOLS

During the past year the school system of the city has experienced a radical change for the better. From a three-year course in the high school, the course now includes four years and also a practical business course. The school district has seen fit to build a splendid building where residents on the North Side can send their little ones to be inoculated with a desirable education. A few of the rooms are still unutilized, but the board has made a sufficient levy for the present year to properly complete the installation of all furniture and fixtures.

COMMERCIAL COLLEGE

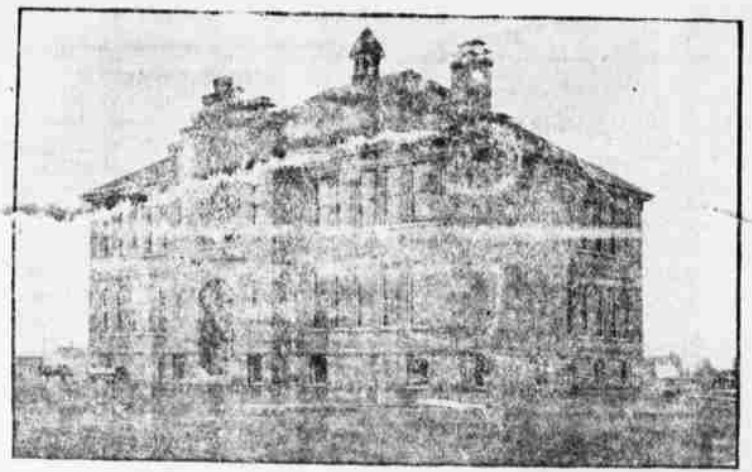
Then too, there has of late, been added a commercial college to our educational system. Miss M. M. Slattery of a long experience has conducted a shorthand school and business college in this city for a few months and will soon have her first class graduated.

ELECTRIC LIGHT COMPANY

The Grande Ronde Electric Company is a firm with ample capital and modern equipment and is furnishing a service to La Grande, Union, Island City, The Cove and Hot Lake. This is one of the very few electric light and power systems on the Pacific Coast that is owned locally. Altogether about 300 horsepower is being supplied by the company to manufacturing interests, among which are:

Pioneer Flour Milling Company	60
La Grande Flouring Mill	60
The Cove Flouring Mill	35
Island City Water Works	40
Hot Lake Sanitarium	40
Soddard Planing Mill	15
La Grande Iron Works	10

The firm employs twenty-four men and has a payroll of \$1,300 monthly.



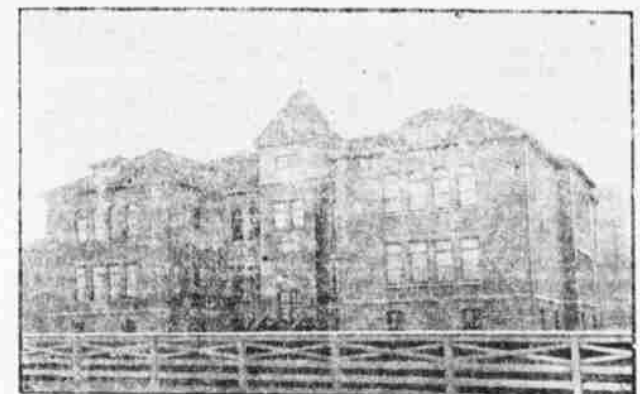
SCHOOL HOUSE, LA GRANDE—ONE OF FOUR

LA GRANDE FLOUR

The La Grande Flouring Mill of this city has been another busy firm the past year. Here are some figures that tell their own story: 25,610 barrels of flour have been made. This represents 191 cars of

CANDY FACTORY

The Selder's Candy Factory has made 19,600 pounds of candy the past year, all purchased by local people, or nine and a quarter tons. Aside from his own services, Mr. Selder employs an expert candy maker and an assistant.



LA GRANDE HIGH SCHOOL

flour. The total includes the local and foreign shipments. Aside from the flour made, the mill has ground 132 cars of feed and four carloads of corn meal. The last item represents 200,000 pounds of meal. The total output of flour, feed and meal was 527 cars. It has cost the firm \$5,000 for labor to make the flour.

LA GRANDE THE MARKET

Owing to the fact of superior storage rooms, it is safe to state that fully three fourths of the fruit business is handled by the three firms doing business in this city the Parr-Simmons Company, the Oregon Produce Company and the Grande Ronde Fruit Growers' Union. The payroll of these firms during the picking season runs into thousands of dollars.

Number of persons between 4 and 20 years of age in county	5,532
Enrollment	4,084
Average attendance	2,671
Number of teachers employed	140
Number of applicants examined for teachers' certificates during year	64
Number of organized school districts	60
Number of legal voters for school purposes	9,253
Number of school houses in county	65
Number of school houses built during year	5
Average number of months school taught	7
Number of schools visited during year by county superintendent	110
Number of miles traveled in performance of official duties	2,000
Number of county teachers' institutes	1
Number of local teachers' institutes held in county during year	1
Total number of library books on hand	3,026
Number of private schools	3
Number of private school teachers	6
Number of pupils enrolled	142
Number months private schools	12

Financial Statement.

Cash on hand June 1, 1905	\$ 21,982.07
Receipts:	
Received from county treasurer, district tax	22,795.41
Received from county treasurer, school fund	21,011.85
Received from county treasurer, state school fund	9,329.80
Received from ratepayers and others	320.15
Received from sale of bonds and warrants	13,002.50
Received from all other sources	1,158.18
Total	\$106,609.76
Disbursements:	
Paid for teachers' wages	\$ 42,362.55
Paid for rent of rooms and other	85.00
Paid for fuel and school supplies	4,640.92
Repairs and improving grounds	2,785.34
New school houses and other buildings and warrens and interest	12,350.48
Insurance	9,181.85
Charitable and other	508.64
Library books	941.97
Paid for all other purposes	22.01
Total	\$113,780.04
Cash on hand June 1, 1906	\$ 22,879.72



LA GRANDE NATIONAL BANK