

Entered at the Post Office at La Grande, Oregon, as Second Class Mail Matter.

Published daily except Sunday

One year in advance.....\$6.50
Six months in advance.....3.50
Per month......65c
Single copy......5c

Saturday, July 15, 1905.

ADVERTISING RATES
Display Ad rates furnished upon application
Local reading notices 10c per line first insertion, 5c per line for each subsequent insertion.
Resolutions of condolence, 5c per line.
Cards of thanks, 5c per line.

WHEAT AND PRICES

The latest Government report, issued day before yesterday, estimated that from present appearances the winter yield this year will be 416,000,000 bushels and the Spring wheat 273,000,000 bushels, a total of 689,000,000 bushels for the wheat crop. When these figures were presented to the operators in the Chicago wheat market they caused a flurry and decline in the price of wheat. The bulls roared and the bears growled, each trying to make the most out of them to suit their purposes. Those operators who wish to purchase wheat at the lowest possible price lay great emphasis upon the figure as they show that the prospective crop is greater than last year and, therefore, they say the price of wheat must tumble.

The Observer sees no cause for a serious decline in wheat in the figures given out. From a table before us compiled by the U S Bureau of Statistics where in the price of wheat and the quantity grown each year from 1866 to 1903 and another table in the same book the following figures are taken.

In 1903 a wheat crop of 637,831,835 bushels was harvest from 49,464,967 acres and on Dec. 1st of that year the farm value of wheat in the U S was 69 1/2 cents per bushel.

The exports of wheat and flour for the year ending June 30, 1903 was 203,905,598 bushels of wheat in the grain or flour exported from the United States or about one third of the crop produced. In 1902 the farm value of wheat Dec. 1, was 63 cents per bushel although on that year with a crop of 670,063,008 bushels we exported 230,332,724 bushels of wheat in grain or flour. The crop of 1905, if up to the estimate, will be but 19,000,000 bushels greater than the one of 1902.

The consumption of wheat increases each year in the United States in proportion to the increase of population. The increase of people in the United States from 1902 to July 1, 1905 was 4,256,000, that is there are that many more people to eat wheat bread, pies and cakes in U S more than in 1902 To feed this increase of population will require, giving them soldiers rations, five bushels of wheat per year or 21,280,000 annually. To feed this increa-

will take over two millions more bushels of wheat than the estimate. crop for this year is greater than the crop of 1902

Oregon was the first state in the Union to receive two sections of land in each township from the General Government for the support of Common schools. Prior to the bill organizing Oregon territory but one section in each township was granted for schools. The man that in 1848 secured the additional section in each township for common schools did more for the cause of civilization than many men for whom monuments have been erected for since then all the new territories have been granted two sections in each township or one eighteenth of their land surface to build up schools in the wilderness. How many Oregonians can name the man who secured this boon?

Notice To Water Consumers

All persons knowing themselves to be in arrears for city water are hereby notified to call at the office of the city Recorder and settle at once. In order that there may be no mis understanding we cite the customer to the following section of the city ordinance. This ordinance will be enforced.

Section 28—The water rates shall be payable in advance at the office of the water superintendent on the first day of each month (except for meters which are payable on the first day of the succeeding month), and if not paid within the first ten days the water will be shut off the premises, as provided in Sections 26 and 27.

Later ordinance provides that water rates shall be payable to City Recorder instead of Water Superintendent.

There's a pretty girl in an Alpine hat
A sweeter girl with a sailor brim,
But the handsomest girl you'll ever see
Is the sensible girl who uses Rocky
Mountain Tea. Newlin Drug Co

GROCERIES

FROM THIS STORE
ARE ALWAYS NICE
AND FRESH



Seasonable Goods as well as Staples always on hand.

GEDDES BROS

North Fir Street

—VISIT THE—
Lewis and Clark EXPOSITION

To be held at Portland, June 1 to Oct. 15, 1905.
TAKE A TRIP TO CALIFORNIA
Through the Willamette, Umpqua and Rogue River Valleys, of Western Oregon, pass Mt. Shasta, through the Sacramento Valley to the many famous resorts on the line of the

SOUTHERN PACIFIC CO.

For beautifully illustrated booklets, descriptive of California resorts, address:
W. E. COMAN, Gen. Passr. Agt.
Portland, Oregon.

Pure Bred Poultry

Parties desiring pure bred poultry can secure eggs from the following well known breeds at \$1 per setting of fifteen Bar Plymouth Rock, White Wyndott, Single Comb Brown Leghorn, and Silver Laced Wyddott.

ELI BAIR.
Island City Oregon

BIG VALUES IN EMBROIDERY

8, 10 and 12 values for 5c

Extra Specials

The Chicago Store
USE RADIUM SILK
NAME ON SELVAGE

LA GRANDE, OR.

TREMENDOUS VALUES IN MEN'S SHIRTS
75c, 85c, \$1.00 values 50c

Extra Specials

Best quality of 15c Percale 9c, Calico 4c, Gingham 5c, finest quality 25c Silk Zephyr Gingham, 8c, Ladies' and Misses Lace Lisle Gloves 15c Children's slippers 50c and a line of Ladies' Oxfords 50c.

Clean Sweep Sale

Commences Friday July 7, Ends Mon. July 31

The greatest clearing sale of the year. Because of the unusual amount of merchandise to clear, this sale will largely exceed all our previous July Clearing Sales in volume, variety of merchandise, and in price reductions. All broken lines, odd lots, and those assortments of regular merchandise which are larger than we wish, have been given low price marks that will force quick selling. The sale sheets will show enormous losses, but we count losses as inevitable during these clearing sales—part of the business.

Every Article in the House Reduced.

EXCEPT E. & W. COLLARS, W. L. DOUGLASS SHOES, SPOOL COTTON AND BUTTERICK PATTERNS WHICH ARE CONTRACT GOODS.

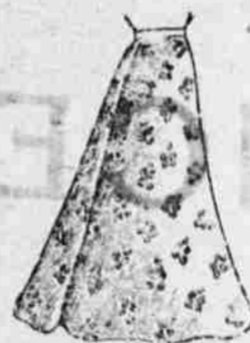
CLEAN SWEEP SALE IN OUR READY TO WEAR DEPARTMENT

Every garment marked at a fraction of its value

A line of Ladies' \$3, \$4 and \$6 Walking Skirts for \$1

Ladies' summer wash Skirts

\$1.50	VALUES FOR	\$1.05
2.25	"	1.60
3.00	"	2.00
4.00	"	2.65



LADIES' WAISTS

Elaborately Trimmed in the Latest Styles, all the Latest and most clever Models shown this season in silks and lawns.

\$.50	GARMENTS REDUCED TO	\$.30
.75	"	.45
1.00	"	.60
1.50	"	.95
2.00	"	1.25
2.50	"	1.45

AND OTHERS WHICH SPACE WILL NOT PERMIT

CLEAN SWEEP SALE IN OUR MENS' CLOTHING

Hundreds of dollars worth of clothing that is as well made, as perfect in fit, as good in material as you can buy any where for double the money



TWO AND THREEPIECE SUITS IN WORSTEDS, TWEEDS AND CHEVIOTS

\$25.00	SUITS REDUCED TO	\$20.00
22.50	"	17.00
15.00	"	11.50
12.00	"	9.50
10.00	"	6.50

MEN'S UNDERWEAR

MADE OF THE FINEST QUALITY OF FRENCH BALBRIGGAN DERBY RIBBED, BEST \$1.50 VALUE FOR \$1.00.

The Chicago Store
We sell GIBBERT'S CELEBRATED Dress Linings