

LEY BROS., Editors & Pr ps

Entered at the Post Office at La Grande, Oregon, as Second Class Mail Matter.

Published daily except Sunday

One year in advance.....\$6 50
Six months in advance.....3 50
Per month.....65c
Single copy.....5c

Monday, July 10, 1905.

ADVERTISING RATES
Display Ad rates furnished upon application
Local reading notices 10c per line first inser-
tion, 5c per line for each subsequent inser-
tion.
Resolutions of condolence, 5c per line.
Cards of thanks, 5c per line.

THE CHINA QUESTION

There seems to be a disposition on the part of some to misrepresent the position of the administration on the China question by representing it as favoring a change in our present exclusion laws, so as to admit Chinese laborers into the United States. Neither the president nor any member of his cabinet has advocated a change in these laws, but what they do seek is that those laws be administered with justice, and in a spirit of manliness so as not to nullify solemn treaty obligations which we have made with China. The treaty our government made with China in 1880 guaranteed equality with other foreigners to Chinese students, teachers, merchants and travelers and to laborers already in the United States. By the treaty of 1894 China consented that we might for ten years prohibit the entrance of Chinese laborers. This treaty expired last December and has not been renewed. The treaty of 1880 permitted the United States to "regulate limit or suspend" the immigration of laborers but not prohibit it. Congress, however in 1882, acting under the "Suspension claim in the treaty of 1880 prohibited the immigration of Chinese laborers, coolies for ten years, made the law more rigid in 1883, extended it for ten years in 1892, and in 1902 again extended it for ten years with additional restrictions. Notwithstanding we now have no treaty with China giving its consent for the exclusion of laborers the Chinese have so far made no objection to the execution of our law of 1902 excluding coolies, but they do insist on the fulfillment on our part, of the treaty of 1880 whereby we agreed to treat Chinese teachers merchants and travelers the same as persons of the same classes belonging to the most favored treaty nations.

The complaint of China is that we do not so treat them, but under the pretext that they are coolies deny them the rights secured by the treaty of 1880. Because of this failure on our part to carry out treaty obligations the great merchantile houses and guilds propose to boycott the United States and practically cut off all commercial relations with our people. In 1903 our trade with China amounted to \$45,547,009.

Pure Bred Poultry
Parties desiring pure bred poultry can secure eggs from well known breeds at \$1 per setting of fifteen Bar Plymouth Rock, White Wyndott, Single Comb Brown Leghorn, and Silver Laced Wyddott.
ELI BAIR.
Island City Oregon

A BIG COUNTRY

To be a citizen of as large a country as the United States now requires much geographical knowledge. Our new possessions in the Philippines Islands renders it necessary to know something about the more than 1700 islands that compose the groupe scattered over an ocean breadth of 832,968 square miles. The land area of those islands is approximately 115,026 square miles, a land surface 20,466 square miles, greater than Oregon. These Islands have a much larger population than Oregon being 7,835,426 in 1903 of these 6,987,686 are classed as civilized. A population nearly double that of the United States when Washington was president

The difference between theoretical and real warfare is that in the former every shot takes effect; in the latter it is only the shots which hit that count.

Kansas cannot try the experiment of running a state refinery in opposition to the Standard Oil company, the bill making an appropriation for the purpose having been declared unconstitutional. It would have been interesting to see what headway the state could make in such an undertaking.

Governor Wright, of the Philippines, does not know how to make the Filipinos pay taxes, and Secretary Taft is going to show him. Taft is setting himself a pretty big stunt, but in view of his own record as Governor of the Philippines, there is ground for thinking he will succeed.

Frightened by the indications of a popular uprising, many of the bureaucrats of Russia have sent their families abroad where they will be safe in the event of a general upheaval. That shows how profoundly the Russian mind has been affected by the agitation that has been in progress so long. The flight of those families suggests the emigration from France at the close of the eighteenth century when rivers of blood were running in the streets of Paris, the streams being tinged with much from the bluest veins of the realm.

Croup

Is a violent inflammation of the mucous membrane of the wind pipe, which sometimes extends to the larynx and bronchial tubes; and is one of the most dangerous diseases of children. It almost always comes on in the night. Give frequent small doses of Ballard's Horehound Syrup and apply Ballard's Liniment externally to the throat 2c, 50c, \$1.00, Newlin Drug Co

O. R. & N.
OREGON SHORT LINE
and UNION PACIFIC

DEPART	Time Schedule LA GRANDE, OR.	FROM
No. 2 8:00 p.m. No. 6 8:00 a.m. No. 1	Salt Lake, Denver, Ft. Worth, Omaha, Kansas City, St. Louis, Chicago and East.	No. 1 5:50 a.m. No. 5 8:50 p.m.
5:50 a.m.	Portland, Dulles, Pennington, Walla Walla, Dayton, Pomeroy, Colfax, Moscow, Spokane, and points east and north via Spokane.	No. 2 9:50 p.m.
No. 5 8:00 p.m.	Portland, Dulles, Pennington, Walla Walla, Lewiston, Colfax, Moscow, Wallace, Warter, Spokane and other points east and north via Spokane.	No. 8:50 a.m.
No. 32 Daily except Sunday 8:15 a.m.	Island City, Astor, Imbler, and other points at Elgin with take for points in Walla.	No. 31 8:50 p.m.

Great Steamers between Portland and San Francisco every 21 days.
E. P. MORGAN, Agent.

BIG VALUES IN EMBROIDERY

8, 10 and 12 values for 5c

Extra Specials

The Chicago Store
USE RADIUM SILK
NAME ON SELVAGE

LA GRANDE, OR.

TREMENDOUS VALUES IN MEN'S SHIRTS 75c, 85c, \$1.00 values 50c

Best quality of 15c Percale 9c, Calico 4c, Gingham 5c, finest quality 25c Silk Zephyr Gingham, 8c, Ladies' and Misses Lace Lisle Gloves 15c Children's slippers 50c and a line of Ladies' Oxfords 50c.

Clean Sweep Sale
Commences Friday July 7, Ends Mon. July 31

The greatest clearing sale of the year. Because of the unusual amount of merchandise to clear, this sale will largely exceed all our previous July Clearing Sales in volume, variety of merchandise, and in price reductions. All broken lines, odd lots, and those assortments of regular merchandise which are larger than we wish, have been given low price marks that will force quick selling. The sale sheets will show enormous losses, but we count losses as inevitable during these clearing sales-part of the business.

Every Article in the House Reduced.

EXCEPT E. & W. COLLARS, W. L. DOUGLASS SHOES, SPOOL COTTON AND BUTTERICK PATTERNS WHICH ARE CONTRACT GOODS.

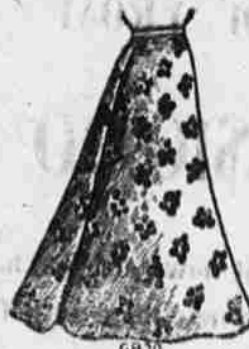
CLEAN SWEEP SALE IN OUR READY TO WEAR DEPARTMENT

Every garment marked at a fraction of its value

A line of Ladies' \$3, \$4 and \$6 Walking Skirts for \$1

Ladies' summer wash Skirts

\$1.50	VALUES FOR	\$1.05
2.25	"	1.60
3.00	"	2.00
4.00	"	2.65



LADIES' WAISTS

Elaborately Trimmed in the Latest Styles, all the Latest and most clever Models shown this season in silks and lawns.

\$.50	GARMENTS REDUCED TO	\$.30
.75	"	.45
1.00	"	.60
1.50	"	.95
2.00	"	1.25
2.50	"	1.45

AND OTHERS WHICH SPACE WILL NOT PERMIT

CLEAN SWEEP SALE IN OUR MENS' CLOTHING

Hundreds of dollars worth of clothing that is as well made, as perfect in fit, as good in material as you can buy any where for double the money



TWO AND THREEPIECE SUITS IN WORSTEDS, TWEEDS AND CHEVIOTS

\$25.00	SUITS REDUCED TO	\$20.00
22.50	"	17.00
15.00	"	11.50
12.00	"	9.50
10.00	"	6.50

The Chicago Store
We Sell GILBERT'S CELEBRATED DRESSING

MEN'S UNDERWEAR
MADE OF THE FINEST QUALITY OF FRENCH BALBRIGGAN DERBY RIBBED, BEST \$1.50 VALUE FOR \$1.00.