

FULL MEASURE

Chain Wood by the Cord

128 cubic feet to the cord. 16-inch dry chain wood \$3 per cord. This is cheaper than by the load. You pay for what you get and get what you pay for.

Phone 571

H. W. NIBLEY

Farmers' and Traders National Bank.

LAGRANDE, OREGON

Capital Stock fully paid . . . \$80,000
Surplus fund . . . 13,000
Liability of Shareholders . . . 60,000
Responsibility . . . 133,000

We do a general banking and exchange business. Rafts bought and sold on eastern and foreign banks.

JOSEPH PALMER, President

J. W. SCRIBER, Cashier

SHERIFF AND JUDGES

Mix up and a hot time is had on Election Day in Cripple Creek.

Cripple Creek, Colo., Nov. 8—Two democratic judges were killed, a deputy sheriff mortally wounded a great number of Democratic judges beaten up and thrown into jail, although both democratic and Republican leaders last night signed an agreement for a peaceful election.

Ike Leopold and Chris Miller, judges for Golf Field were shot down by one of Sheriff Bell's deputies this morning. They ordered the deputy off the polling booth. He refused to go, turned on the judges and killed them both. At midway this morning deputy Sheriff Doyle assaulted Mrs. Kennedy because she was supporting the democratic ticket. Ed O'Leary a democratic watcher objected, Doyle shot at him and missed, and O'Leary promptly shot Doyle, who will die, O'Leary has been arrested.

Japanese Fire

The Japanese used entirely the indirect method of firing, made possible by the long range and consequently high aiming elevations of modern field guns. For the information of the unsophisticated I will explain that indirect firing consists in placing guns behind an elevation of ground, and by raising their muzzle at an angle mathematically calculated, firing at an object a long distance away. Thus while the projectile, which takes a curved flight, reaches the object at which it is aimed, a line of vision, which is direct, cannot reach the gun from the object fired at. So the Russians at Wafengoa were for hours under a terrific artillery fire, yet not once did they catch sight of a Japanese gun. Of course, while they were able to reply they directed their own fire where the enemy was supposed to be, and probably did him considerable damage until their own guns were put out of action by the superior fire of the Japanese. —Thomas F. Millard, in the October Scabbler's.

DREDGING ON BURNT RIVER

The Huntington Herald of Saturday says A and C Feldenhelmer of Portland have just finished bonding all of the ground on Burnt River from Weatherly to Durkee for dredging. They expect to put in a six inch Keystone drill immediately and prospect the ground thoroughly and if the ground comes up to their expectations and previous prospecting is confirmed they will have three new dredges besides the one near Durkee in operation by spring. —Maker City Herald.

WORLD'S FAIR DOG SHOW

St. Louis, Nov. 8—Despite the excitement incident to the election the Dog Show which opens here today attracted a large number of visitors. All classes of dogs are on exhibit and the entries include canines from many world-famed kennels. Sharing honors with the dogs are the Cats, who also have a special exhibition of their own, both shows will last for three days.

Bulletin No. 54

The Observer received on Tuesday morning Bulletin No. 54 direct from the Department of Commerce and Labor, a book of 541 pages, descriptive of the exhibit of the United States Bureau of Labor at the Louisiana Purchase exposition, now going on in St. Louis, Mo. The book is full of valuable information concerning home life in the United States, the labor problem, education and all economic questions that affect the home life of the American people. It is not a book of academic theories, but facts and figures that illustrate real life on farm and in factories. The authors look in to the dinner pails and tell what they see there and the cost thereof, examine the clothing of the laborers and their families, the school houses their children attend, and the houses the people live in. To illustrate. Suppose you wish to know what the average cost of food, at retail prices, for a family of average size, 4.62 persons in the United States is, by turning to table 23 you will find it to be \$326.90 of which fresh beef is the largest item, being \$50.05 and flour, meal and bread \$29.20.

EVERY DAY THEFT

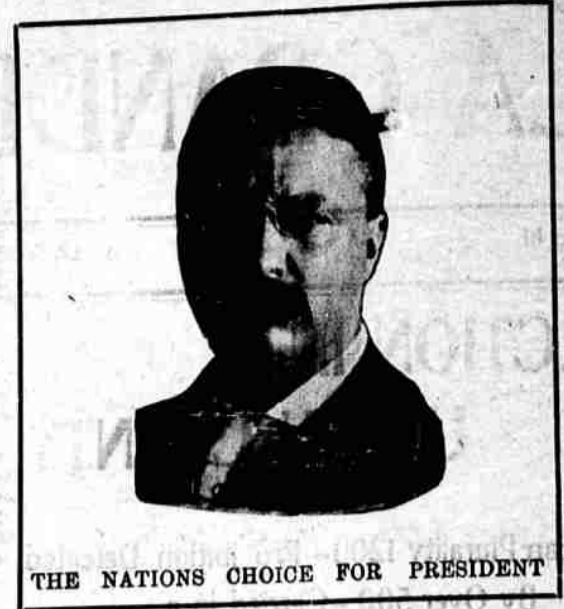
A Sumpter Merchant Misses Goods Which in a Year Amount to about \$1000

For months past Cato Johns, the Sumpter merchant, who deals in every thing under the sun, has been made the victim of pilfering in his dry goods department and neither his eagle eyes or those of his employees were able to ferret the mystery, though they had repeated dark suspicions as to the culprits. Cato discovered as the speculations increased the larcenists insisted upon taking more valuable patterns. Then he concluded that it was up to him to sharpen his Hawk Shaw wits. The demeanor of every customer was studied to see whether the physiognomic horoscope would reveal the kleptomaniac symptoms. Deductions, such as Sherlock Holmes never made when under the greatest mental strain, followed each move of anyone whose physiognomy gave promise of "lifting" propensities. The result was the alert merchant cornered his quarry. Protests, at first virtuously indignant and then tearfully pleading, such as good looking and clever women can make, did not deter the merchant-sleuth, and the two women, for they worked together, were taken to Marshal Rand's sweat box, where they confessed to a sequence of larcenies that appalled both men. They made partial restitution and arranged to make good the delinquencies.

The amount of goods taken during a period of about seven months is said to have a value close on to \$1000. —Baker City Herald.

Great Floral Display

St. Louis Nov. 9—The chrysanthemum and mixed flower show which opened at the fair today surpasses anything ever before held in this country. The floriculture of the United States and foreign countries is largely represented. The entire eastern wing of the palace of Horticulture is devoted to the display which will last during the week.



THE NATIONS CHOICE FOR PRESIDENT

FINE TAILORING

Before ordering your fall and winter suit or overcoat remember that I am in the business. I have 17 years experience, have worked for some of the best firms in the U. S., and able to compete with the best. If I can't suit you there will be no charges made.

MARQUARDT, The Tailor.

Phone 1241 La Grande, Oregon

A B C LAUNDRY

PHONE 1851

Notary Public Insurance Money to Loan

Representing the Equitable Savings & Loan Association of Portland, Or., the strongest, safest & most reliable institution on the Pacific coast, under State supervision. Loans made short or long time to suit. WM. GRANT, Agent

City property for sale.

OFFICERS:
Geo. Palmer, President
J. M. Berry, Vice President
J. M. Church, Cashier
F. L. Meyers and Geo. L. Cleaver, Asst. Cashiers

DIRECTORS:
J. M. Berry, J. M. Church
A. B. Conley, Geo. L. Cleaver, Geo. Palmer

3655 LA GRANDE NATIONAL BANK

La Grande, Oregon
CAPITAL AND SURPLUS, \$72,000.00
Transacts a general banking business. Buys and sells exchange on all parts of the world. Collections a specialty.

Lawson & Zundel

Wholesale and Retail Dealers in Hay, Grain, vegetables and Fruits. Car load lots a specialty. Office in Kilpatrick Building Phone No 1113

SEPTEMBER MEANS ROYSTERS

LOY

Serves them in any style wish



MUT-ON CHOPS.

make a most delicious and healthful meal. They are juicy and palatable and just melt in your mouth—so delicious is their taste. We have them fresh every day—but we don't only sell fine muton chops. Our daily stock includes obbies lamb chops, veal chops, sirloin porterhouse, round and other steaks as well.

Such meats make the best of eating. They are good and solid and every bit that goes into the body makes pure blood and strengthens the organs of the human machinery. Buy your meats at our store. We always have the best, and sell at the very lowest prices.

Bock & Thomas

Dress Hats

The greatest line of Tailored Dress Hats just received at The Fair. They are beauties to behold. Our milliner will be pleased to show them to you also a line of cravette coats.

Grande Evening Observer

BEY BROS., Editors & Pr

Entered at the Post Office at La Grande, Oregon, as Second Class Mail Matter.

Published daily except Sunday

One year in advance . . . \$6.50
Six months in advance . . . 3.50
Per month 65c
Single copy 5c

WEDNESDAY EVENING, NOV. 9, 1904

La Grande gave Roosevelt a plurality over Parker of 370.

Mr. Hill may now retire. He need not wait until the first of the year.

Four years more of Roosevelt and the country can stand it.

Mr. President, the vote from New York to California was one continual indorsement of your administration.

Mr. Bryan is easily Democratic leader in the United States today.

Union county is noted for progressiveness, for instance her majority of 1100 for Roosevelt is in line with the other progressive states.

A 500 Republican majority in June and 1100 in November. What is the matter with Union county?

State Supreme Court

The November term of the state supreme court convened yesterday morning in Pendleton at the county court house. Chief Justice F. E. Moore presiding Assistant Chief Justice Robert E. Bean and C. E. Wolvorton are present and Attorney General A. M. Crawford of Union, is also present. There are twenty one cases to be disposed of during this term and it is believed the docket will be wound up by the end of the week.

ANNOUNCEMENT!!!

We have purchased the Big Stock of Furniture, Hardware, Tin and Graniteware, Carpenters Tools etc of Sequest Bros at A BIG DISCOUNT and for the next 30 days we offer the people of Union county the GREATEST BARGAINS of the season in House Furnishings at 75c on the dollar in order to close out this stock quickly.

Regular \$20 to \$30 bed room suits	\$12.75 to \$21.75
" 12 50 to 20 Dressers	8.75 to 13.50
" 8 00 to 22 50 Iron Beds	5.75 to 13.75
" 10 00 to 21 00 Lounges	7.50 to 12.50
" 11 50 to 25 00 Baby Carriages	8.00 to 15.00
" 12 00 to 18 00 Extension Tables	8.65 to 14.25
" 3 50 to 9 00 Child's Beds	2.45 to 6.75
" .75 to 2 50 Dining Chairs	.60 to 1.85
" 3 50 to 9 50 Rockers	2.50 to 9.25
10 00 Double supported steel springs	7.15 Common springs 50c to 4.90

Don't forget the Heaters and Cook Stoves Saws, hammers and Axes; nails, Staples, hinges, Cartridges, window shades, Curtains, Portiers, Cots, etc etc Call while the stock is complete Look out for our sign

H B HAISTEN

P. o 1c 2051

F D HAISTEN