

# LA GRANDE EVENING OBSERVER

NUMBER 15

LAGRANDE, OREGON, MONDAY EVENING, MAY 2, 1904.

## SHEEP HERDER KILLS EMPLOYER

Allegation Arose Over Settlement of Account Morton is Now in Jail at Pendleton.

PENDLETON, May 2.—On Sunday afternoon Wm. Morton, a sheep herder, shot and killed his employer, J. Dougherty. The victim of this shooting affray was a well known and wealthy stockman of Butte Creek, who has lived many years near Vinson, 20 miles from Pendleton, in Umatilla county. Morton was arrested taken to Pendleton and now awaits of authorities in the county jail. Mr. Dougherty was also taken to Pendleton and placed in the hospital but died as a result of the bullet in the lungs.

Morton has been working for Dougherty for several weeks. On Saturday he was discharged and a disagreement arose over the sum of money due Morton. Both became angry and a fight was narrowly prevented.

During the quarrel Morton was said that he had money enough to buy a gun and that he would get Dougherty. Next day he returned and when the parties caught sight of each other, firing began on both sides. Morton escaped unhurt and Dougherty was fatally wounded in the lungs.

### Flying Machine

with his experiments with his flying machine and will be ready in a few days to give it a practical test.

### Body Found.

Prinville, May 2.—The body of Creed Conn, the Silver Lake merchant who mysteriously disappeared several weeks ago and which was supposed to have been washed down Silver Creek during the high water, was found last week by Fred Autin, an employe of one of the cattle farms in that vicinity. The body was found in the sage brush about a mile and a quarter from town. A bullet hole in the right temple showed the manner of his death. The body was badly decomposed from its long exposure to the weather. Coroner Harris was summoned and an inquest held, the jury returning a verdict of self inflicted death.

### Revolutionary Stock

There are doubtless many men and women in the Union county whose ancestors served in the Revolutionary war. If such will send their names and the names of their Revolutionary ancestors the Observer will record the same in a list and publish the same together with sketches of the service rendered. Give rank of forebearer from what State he entered the service what battle and campaign he participated in any incidents that tradition of the family may possess concerning him that illustrates life in Revolutionary times.

## DESEASED TREES

North Yakima Fruit Inspector Condemns 10,000 Trees Shipped From Willamette.

North Yakima, Wash May 1.—County Fruit Inspector Beck today condemned 10,000 fruit trees shipped here for Yakima orchards by J. H. Sattlemeyer of Woodburn, Or. They were affected with crown and root gall and were the worst lot of trees that have been brought to Yakima this year.

### Robbers Escaped

Enterprise Or May 2.—The Post office robbers have escaped again. The three men who were left by Sheriff Shackelford to guard the robbers and take refuge in the rocks where they had taken refuge seemed to have gotten weary of waiting and made a little side trip to the Innaba river. When they returned they found their robbers missing. When the Sheriff arrived with his posse he found neither robbers nor clue of their expected address. There is but two ways for them to have gone, over the mountains through the snow, or back to town. As two thirty this afternoon they had not registered at either of the hotels in Enterprise, but they may arrive yet this evening.

### Election Supplies In

County Clerk M. M. Smith received the election supplies for the June election this morning from the Secretary of State. The law governing elections and all of the blanks and forms necessary to conduct the election were included in the consignment. They will be distributed among the various election officers by the sheriff in due time before the polls open.

### Hilgard Mill

Chas. W. Noyes returned this morning from Hilgard where he made arrangements to take complete management of J. D. Casey's saw mill, which will be in operation in a few days. This mill will cut 3,000,000 feet of lumber this season. Mr. Noyes is a practical millman having had many years of experience in this line.

### Died

KENNEDY.—In this city Monday morning at two o'clock Mrs. H. P. Kennedy wife of Mr. H. P. Kennedy of heart failure caused by diphtheria and poisoning. Mr. Kennedy had apparently recovered from the disease proper, but her constitution was so weakened that her heart simply could not perform its work. The funeral will not be public. Mrs. Kennedy is a daughter of Mr. and Mrs. J. W. Allen of this city.

### Tomorrow Night

The entertainment to be given tomorrow at the central school building by the 10th and 11th grades of the high school promises to be of more than ordinary interest. The fact that it is a contest for supremacy between the two classes will increase the zeal of the contestants to the highest point. The selection by the new High School band will be worth more than the price of admission. Whatever money is taken in will be devoted to purchasing music for the orchestra and Glee club and for sending a representative to Whitman for the declamation contest.

## LA GRANDE NATURAL CREAMERY CENTER

So Says Mr. Goodhue, Owner of One of the Largest Creamery's in the State, and He Should Know

Mr. Geo. D. Goodhue, who is one of the most experienced creamery men in the Northwest in the city and has been in the valley for several days on a tour of investigation and emphatically expresses it as his opinion that Grande Ronde valley will in a very few years be one of the greatest dairy and creamery sections in the Northwest. Three years ago Mr. Goodhue spent a few days on the Sandridge talking dairying, but at that time he was not thought possible to grow alfalfa or in fact anything but wheat. During his present visit he noticed many fields of alfalfa that will produce from 3 to 5 tons to the acre and will furnish an excellent pasture the balance of the year. Alfalfa is an ideal cow and hog feed and either in its green or cured state is one of the most complete dairy rations. The dairy business has made rapid strides during the past few years from

the fact that it is no longer necessary for the farmer to make daily trips to the creamery. The hand separator now permits deliveries, necessary only two or three times each week and allow the farmer to feed the skimmed milk to his calves or hogs while sweet.

Another great advantage in the dairy business that the patrons of a creamery have is, that there is a constant monthly income during each month of the year.

Mr. Goodhue realizes the natural and central position that La Grande occupies for the support and maintenance of the largest creamery in Eastern Oregon and that the Grande Ronde Creamery Co. now existing in this city are especially adapted to this line of business and will more than fulfill the most sanguine expectations of the most enthusiastic business men in this city.

land. One hundred and fifty thousand gallons of water are used in the manufacture of the paper, and above all the standard grades of paper.

### Milk Ivory

A factory at Vienna, Austria, is said to use 20,000 quarts of milk daily in manufacturing substitutes for ivory, celluloid, hard rubber, etc. The hardened substance made from milk is not affected by either fire or water, and is used for billiard balls, paper knives, knife handles, cigar holders, etc.

## TWO DAYS BATTLE

Reported That the Russians Were Victorious—Japs 70,000 Strong Crossing River.

London, May 2.—A news agency dispatch from Liaoyang, dated Friday, announces that there has been further fighting on the Yalu, that the Japanese met with severe reverses while attempting to cross the river on Friday and the Russians secured a brilliant victory. No details are given.

### FIGHTING FOR TWO DAYS

Newchwang, May 2.—It is reported here, but as yet unconfirmed that there has been severe fighting for two days along the Yalu river. Japanese forces 70,000 strong crossed the river into Manchurian territory and were strongly resisted by a large Russian force.

The Russians finally retired in the direction of Feng Wyang Cheng, in accordance with their plan of campaign. This meeting of hostile armies is severest that has yet occurred and while there is no hint as to casualties, it marks the actual opening of the campaign on land. It is reported but also unconfirmed that the Japanese have landed in force near Chinchow.

The main Russian force is said to be concentrated at Tieling to the north of Mukden. There being no intention of holding the banks of the Yalu the Russian troops it is explained here are falling back from the river upon Feng Wyang Cheng.

### Sugar Increase

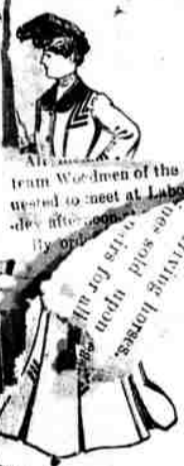
Messrs. Miller & Gray, sugar statisticians of New York, report that the amount of beet sugar produced in the United States in 1903 was 208,135 long tons, compared with 195,563 tons the previous year. The amount of sugar consumed in the United States is increasing at the rate of about 50,000 tons a year.

### Range War

A special from Lakeview to the Oregonian says: Masked men went to a sheep camp on Christmas lake, in the northern county, Thursday night, and went into a band of 2000. The sheep belonged to Grube, C. B. county sheep-

Have You Thought of It? We know we've got "TO SHOW" YOU This Idea Pleases Us

When We "Show" we win, and you win when you purchase a suit or skirt, at the price placed on them during this SALE. Tuesday, Wednesday, Thursday, Friday, and Saturday. This Sale is for the purpose of reducing our immense stock and TO MAKE A CUSTOMER OF YOU



Crash Skirts, \$1.25 to \$6  
Walking Skirts, \$2.40 to \$12  
Dress Skirts \$3.60 to \$28

## THE CHICAGO STORE

1205 and 1267 ADAMS AVENUE, Lagrande Ore.  
MURPHY BRO'S., Prop's.

## Defense Against Germs

ATTENTION! Ladies, wash your hands and baby's face with this... We're winner. The... STUMBER CO.

## SHOE SALE Extraordinary

We know that we have one of the best assorted and most popular-priced stock of Shoes in La Grande—in fact as complete and as large a stock as the average exclusive stock you find in the country. WE KNOW THIS, but we want YOU to know it, and commencing MONDAY MORNING, MAY 2, we offer every pair of our Men's, Ladies' Children's Shoes at REDUCED PRICES, for one week ending Saturday Night, May 7. Every pair of them warranted to be the best shoe on, or off the earth for the money.



### NOTE CAREFULLY REDUCED PRICES.

Bring this list with you. Every shoe in our stock is marked in plain figures and will be sold exactly as priced here.

\$5 00 shoes	.....	\$4 25
4 50 "	.....	3 95
4 00 "	.....	3 45
3 50 "	.....	2 95
3 25 "	.....	2 85
3 00 "	.....	2 60
2 75 "	.....	2 45
2 50 "	.....	2 10
2 25 "	.....	1 95
2 00 "	.....	1 80
1 90 "	.....	1 65
1 75 "	.....	1 55
1 65 "	.....	1 45
1 50 "	.....	1 35
1 40 "	.....	1 25
1 35 "	.....	1 15
1 25 "	.....	1 10
1 15 "	.....	98
1 00 "	.....	88
90 "	.....	75
85 "	.....	70
75 "	.....	65
65 "	.....	55
50 "	.....	39



Notice this shoe, observe the style of it, the tasteful stitching, graceful curve of the outline, the swell shape of the toes. It is one of the neatest styles in our large line of PETERS SHOES.

You can't get much of an idea from a picture of a shoe, you need to come in and feel the silky softness of the leather, see the elegant fit and trim look it gives to your foot. They are equal to any \$5.00 shoe made, and we want to prove it to you.

The Pair THE TRADE TO SHOE FROM

"THE FAIR"