

OBITUARIES



**Eldon 'Ardell' Johnson**

Oct. 5, 1926 — March 16, 2018

Eldon "Ardell" Johnson, 91, was born in Silverton on Oct. 5, 1926, to parents Oscar and Pauline Johnson. He passed away on March 16, 2018.

Ardell was a proud member of the United States Army from 1953-1955 and served in Germany.

In 1957, he married Doris Wilson. After her passing, he married Bettie Munger. He retired from Cascade Farm Machinery after nearly 50 years of service. He was also a lifetime member of Immanuel Lutheran Church in Silverton. His hobbies were enjoying collector cars and tractors.

He is survived by his wife Bettie; brother Daryl (Janell); his three sons, Steve (DeeDee), Rex (Laura) and Dale (Debbie); six grandchildren; and 10 great-grandchildren.

Services were held at Immanuel Lutheran Church on March 24.

Arrangements with Unger Funeral Chapel.

work on her degree while working full time, being a wife and becoming a mother to Megan Lynn and Jacob Rhine.

When Rhine took a position in Klamath Falls, Jennie started her career in government by working for the City of Klamath Falls. Later, when they moved to Silverton, Jennie worked for the League of Oregon Cities and then the Mid-Willamette Valley Council of Governments. Jennie also spent several years serving as interim city manager for several communities around Oregon as they worked to find a full-time manager.

Jennie never had a negative word to say about anyone. She worked hard and loved much. She was a true friend, and was always helpful and kind. Her children and husband were her priority and she was very proud of their accomplishments. Jennie was kind and loved family and friends with her whole heart. She was an available ear and gave sincere, quality advice when asked. Jennie set a goal to live a year when she was diagnosed with pancreatic cancer in December 2015. She exceeded her goal just like she exceeded expectations in all aspects of her life. Those of us who were blessed by having her in our lives will miss her very much, but know that she is at peace, pain free, and in a better place now.

Jennie was preceded in death by her grandparents, parents (Paul and Ruth McPherren), aunts and uncles. She is survived by her husband, Rhine Messmer; daughter Megan Messmer; son Jacob Messmer (Jessica); brother Patrick McPherren; sisters Leslie Repman (Jim), Kathy Johnson (Roger) and Sharon Fritsch (Mark); as well as many nieces and nephews.

A celebration of life will be held from 1 to 5 p.m. April 14 at the Festhalle in Mt. Angel, 500 Wilco Highway NE. Beverages, snacks, and deserts to be provided.

Donations can be made to the Pancreatic Cancer Action Network. Flowers are welcome for the celebration of life.

# How to avoid buying any invasive plants



**Gardening**

Carol Savonen  
Guest columnist

**Question:** I have been visiting plant nurseries this spring and have seen plants for sale that I know are invasive plants here in Oregon. Since it is planting season and we have many newcomers, could you talk about what sort of plants to avoid buying here in Western Oregon?

**Answer:** Some plants are on the state invasive species list because they compete and even take over native plants. If you don't want to spread a problem plant, here is a small sampling of the plants to avoid buying and/or planting. These and many others may be sold at garden centers, plant sales and swaps, nurseries and seed catalogs:

**Brooms and gorse (Cytissus and Ulex):** Both these types of yellow-flowering shrubs form dense thickets. Some ornamental varieties of brooms are still sold in nurseries, mostly out of state.

**Butterfly bush (Buddleja davidii):** These spread like crazy by wind-carried seed and thrive in mild coastal conditions. If you have it already and can't bear to part with it, clip off the blossoms after bloom, before they set seed. There are some newer cultivars that the nursery industry claims does not spread. Read the tag carefully before you buy.

**Ribbongrass (Phalaris arundinacea var. picta):** This large, variegated (lovely green and white leaves) grass spreads noxiously, especially near water.

**Wildflower seed mixes:** Toadflaxes, sometimes known as "butter and eggs" (Linaria dalmatica or vulgaris), bachelor buttons (Centaurea cyanus) and viper's bugloss (Echium vulgare). I've seen all three of these species sold in wildflower mixes. Each can spread like mad, especially in hot dry microsities.

**Yellow flag iris (Iris pseudacorus):** Still sold as an aquatic plant, this large, yellow iris is gorgeous, but it spreads along streams, rivers and ponds and chokes out native wetland vegetation that wild creatures depend on.

Many other invasive plants are still sold. Avoid buying holly, English and Irish ivy, Russian olive, purple loosestrife ... I could go on and on.

To learn more about native plants available as landscape plants, here are a couple of good resources available online:

GardenSmart in Oregon: A Guide to Non-Invasive Plants: This 56-page guide highlights plants that should be avoided because they are invasive, and it offers non-invasive alternatives that you can safely plant instead. Visit [invasives.org/gist/products/outreach/gardensmart\\_oregon\\_reduced.pdf](https://www.invasives.org/gist/products/outreach/gardensmart_oregon_reduced.pdf).

The Eugene chapter of the Native Plant Society of Oregon offers a set of three booklets about gardening with native plants: Native Herbaceous Plants in Our Gardens emerald.npsoregon.org/NGAPguides/Herbaceous-Booklet.pdf; Native Shrubs in Our Gardens emerald.npsoregon.org/NGAPguides/ShrubsBooklet.pdf; Native Trees in Our Gardens emerald.npsoregon.org/NGAPguides/NativeTrees-Booklet.pdf. Download and print these at home or send for print (hard copy) versions through the mail by sending a check to PO Box 902, Eugene 97440-0902. Checks should be made out to Emerald Chapter NPSO with NGAP Gardening Guides in the memo line. Cost is \$9.35 (which includes postage) for the set of three.

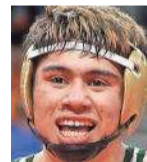
Lastly, you can report noxious weeds at Oregon Department of Agriculture's invasive species hotline at [oregoninvasivespeciescouncil.org/report-an-invader](https://oregoninvasivespeciescouncil.org/report-an-invader) or by calling 1-866-IN-VADER.

Carol Savonen is a naturalist and writer. She is an associate professor emerita at OSU and tends a large garden in the Coast Range Hills west of Philomath with her husband and dogs.

## Wrestling

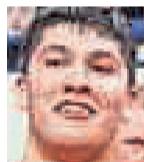
Continued from Page 1B

Class 4A state champion



**David Rubio**

School: McKay  
Year: Junior  
Weight class: 170 pounds  
State results: OSAA  
Class 6A state champion



**Louie Sanchez**

School: Cascade  
Year: Senior  
Weight class: 220 pounds  
State results: OSAA  
Class 4A state champion



**Caleb Sedlacek**

School: Central  
Year: Senior  
Weight class: 285 pounds

State results: OSAA Class 5A state champion



**Russel Stigall**

School: North Marion  
Year: Junior  
Weight class: 132 pounds  
State results: OSAA  
Class 4A state champion



**Alexys Zepeda**

School: Gervais  
Year: Freshman  
Weight class: 113  
State results: OSAA  
Class 3A state third place



**Coach — Tony Olliff**

School: Dallas  
Accomplishment: The Dallas wrestling team won the OSAA Class 5A state championship with 188 team points, 30 more than any other team.

# CLASSIFIEDS

Appeal Tribune  
silvertonappeal.com

The Stayton  
Mail

Place an ad online 24/7 at [StatesmanJournal.com](https://StatesmanJournal.com) or call 503-399-6789 • 1-800-556-3975

Find a new job or career



**JOBS**

**the job network**  
JOBS.STATESMANJOURNAL.COM

Discover your new home



**HOMES & RENTALS**

**Homes**  
STATESMANJOURNAL.COM/HOMES

Turn here for your next vehicle



**AUTO**

**cars.com**

Auctions, pets, services & stuff



**STUFF**

[StatesmanJournal.com/classifieds](https://StatesmanJournal.com/classifieds) in print Wednesday through Sunday

## TRUST THE HOMETOWN EXPERTS AT SILVERTON REALTY



SERVING THE EAST VALLEY SINCE 1975



**Kristen Barnes**  
Broker  
503.873.3545 ext. 326



**Marcia Branstetter**  
Broker, GRI  
873-3545 ext. 318



**Micha Christman**  
Office Manager  
503-873-1425



**Becky Craig**  
Broker  
873-3545 ext. 313



**Karen Gehrt**  
Broker  
873.3545 ext 312



**Michael Schmidt**  
Principal Broker, GRI  
873-3545 ext. 314



**Ryan Wertz**  
Broker  
873-3545 ext. 322



**Meredith Wertz**  
Broker, GRI  
873-3545 ext. 324



**Chuck White**  
Broker  
873-3545 ext. 325



**Christina Williamson**  
Broker  
873-3545 ext. 315



**Mason Branstetter**  
Principal Broker, GRI  
873-3545 ext. 303

**NEW-SILVERTON**

#A2463  
VINTAGE HOME  
3 BR, 1 BA 1236 SQFT.  
CALL MARCIA AT EXT. 318  
\$259,900 (WVMLS#730320)

**SILVERTON**

#A2454  
RESIDENTIAL BUILDING LOT  
.15 ACRES CALL  
CHUCK AT EXT. 325  
\$69,900 (WVMLS#728134)

**SILVERTON**

#A2440  
LOCATION, LOCATION, LOCATION  
HIGHLY MOTIVATED!  
4 BR, 1.5 BA, 2247 SQFT  
CALL MASON AT EXT. 303  
\$344,000 (WVMLS#725845/729057)

**NEW-SALEM**

#A2464  
SOUTH SALEM RANCH  
3 BR, 2 BA 1640 SQFT  
CALL CHUCK AT EXT. 325  
\$284,900 (WVMLS#730479)

**MOLALLA**

#A2457  
HWY 213 FRONTAGE  
.30 ACRES CALL MEREDITH AT  
EXT. 324, RYAN AT EXT. 322  
\$99,900 (WVMLS#729177)

**SILVERTON**

#A2341  
2 HOMES ON 2 ACRES  
3 BR, 2 BA 1367 SQFT, 2.630 ACRES  
CALL CHUCK AT EXT. 325  
\$549,900 (WVMLS#709561)

Brokers licensed in Oregon

[WWW.SILVERTONREALTY.COM](https://www.silvertonrealty.com) | 303 OAK STREET | SILVERTON

Call us today! 503.873.3545 | 1-800-863-3545



**FOR RENT**

Call Micha  
at 503-873-1425  
or see them on our website.

