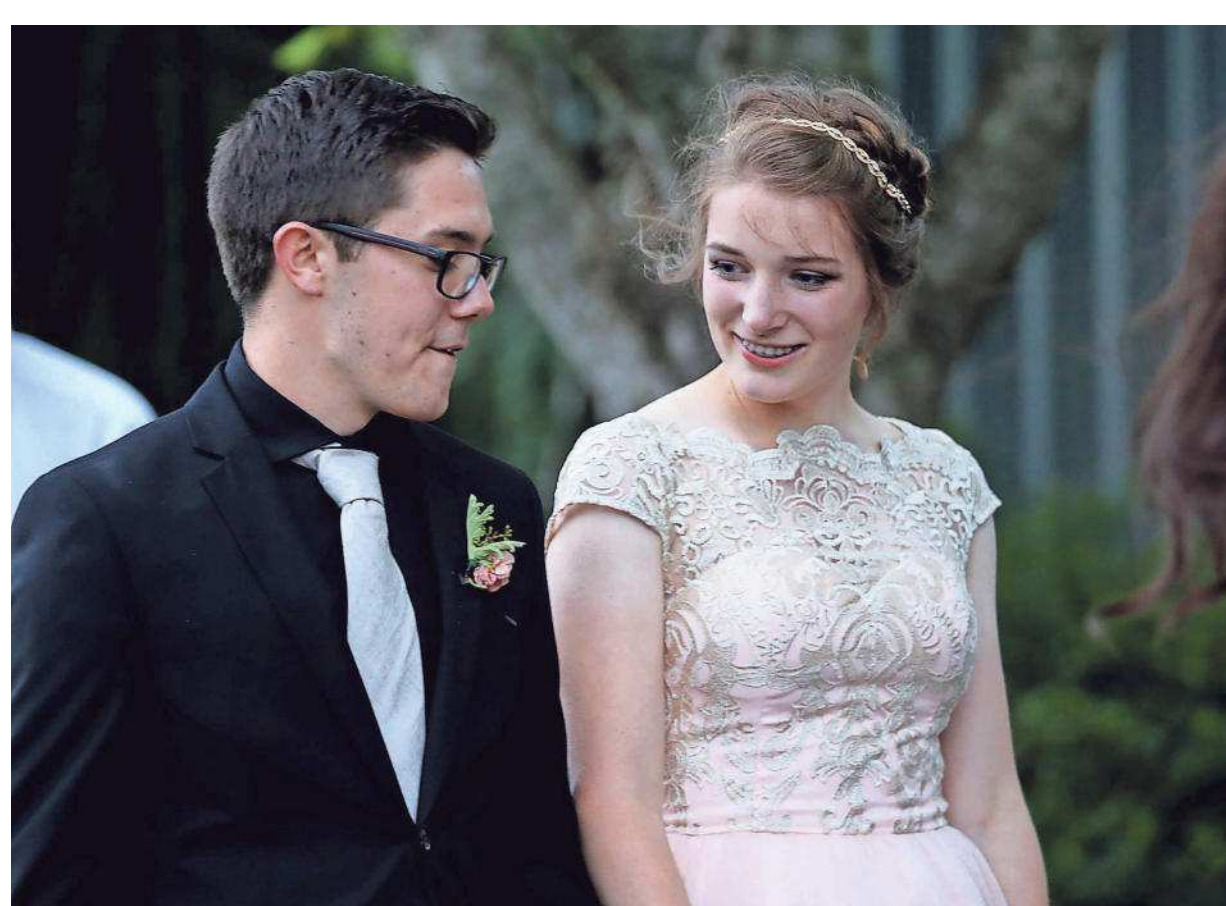


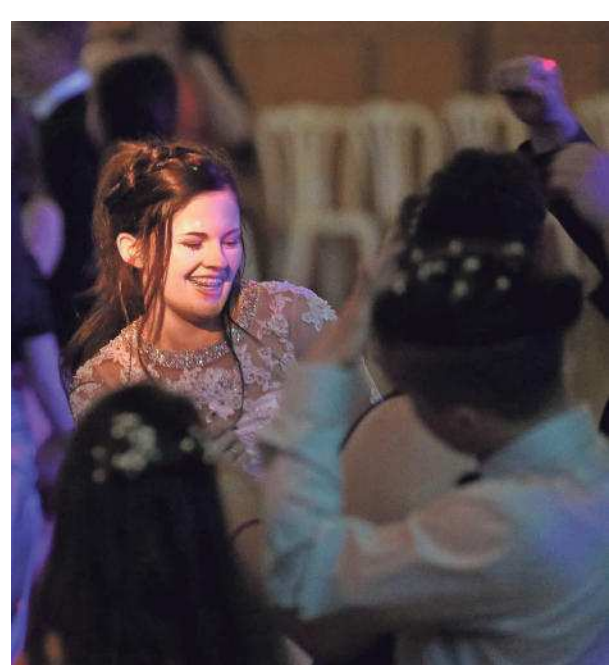


PHOTOS BY ANNA REED/STATESMAN JOURNAL

Silverton students arrive for prom at the Oregon Garden on Saturday.



Kadin Brodahl and Caitlin Keating, both seniors, dance at Silverton High School's prom at the Oregon Garden on Saturday.



Ciarra Shuker dances at Silverton High School's prom at the Oregon Garden on Saturday.

Remington Kuenzi and Kylie Lulich arrive for Silverton High School's prom at the Oregon Garden on Saturday.

Invest in something that matters to you

Tax-free municipal bond **3.02%**

WASHINGTON CNTY ORE SCH DIST N O 48J BEAVERTON lets you invest close to home. That means you can watch civic progress and still enjoy the tax-free income from a quality bond.
Yield to Call Callable on: 06/15/2027 @ \$100.00
Final Maturity: 06/15/2036

Call or visit your local Edward Jones financial advisor today.



www.edwardjones.com
 Member SIPC
LOCAL ADVISORS

- | | | |
|---|--|--|
| Salem Area | Keizer Area | Surrounding Area |
| Vin Searles
FINANCIAL ADVISOR
Mission 503-363-0445 | Garry Falor
FINANCIAL ADVISOR
West 503-588-5426 | Sheryl Resner
FINANCIAL ADVISOR
Keizer 503-304-8641 |
| Michael Wooters
FINANCIAL ADVISOR
South 503-362-5439 | Chip Hutchings
FINANCIAL ADVISOR
Lancaster 503-585-4689 | Mario Montiel
FINANCIAL ADVISOR
Keizer 503-393-8166 |
| Caitlin Davis
FINANCIAL ADVISOR
West 503-585-1464 | Tim Sparks
FINANCIAL ADVISOR
Commercial 503-370-6159 | Tim Yount
FINANCIAL ADVISOR
Silverton 503-873-2454 |
| Jeff Davis
FINANCIAL ADVISOR
Liberty 503-581-8580 | Walt Walker
FINANCIAL ADVISOR
Stayton 503-769-4902 | |

* Yield effective 05/09/2017, subject to availability. Yield and market value may fluctuate if sold prior to maturity, and the amount you receive from the sale of these securities may be more than, less than or equal to the amount originally invested. Bond investments are subject to interest rate risk such that when interest rates rise, the prices of bonds can decrease, and the investor can lose principal value. Any bond called prior to maturity may result in reinvestment risk for the bond owner.

Edward Jones
 MAKING SENSE OF INVESTING

Appeal Tribune

P.O. Box 13009
 Salem, OR 97309

Address
 P.O. Box 13009
 Salem, OR 97309

Phone
 503-873-8385

Fax
 503-399-6706

Email
 sanews@salem.gannett.com

Web site
 www.SilvertonAppeal.com

Staff President
 Ryan Kedzierski
 503-399-6648
 rkedzierski@gannett.com

Advertising
 Terri McArthur
 503-399-6630
 tmcArthur@salem.gannett.com

Deadlines
 News: 4 p.m. Thursday
 Letters: 4 p.m. Thursday
 Obituaries: 11 a.m. Friday
 Display Advertising: 4 p.m. Wednesday
 Legals: 3 p.m. Wednesday
 Classifieds: 4 p.m. Friday

News Tips
 The Appeal Tribune encourages suggestions for local stories. Call the newsroom at 503-873-8385 ext. 2. To submit letters to the editor or announcements, call 503-399-6773.

To Place an Ad
 Classifieds: call 503-399-6789
 Retail: call 503-399-6728
 Legal: call 503-399-6791

Missed Delivery?
 Call: 800-452-2511
 Hours:
 until 7 p.m. Wednesdays;
 until 3 p.m. other weekdays

To Subscribe Circulation Manager
 Art Hyson
 ahyson@salem.gannett.com
 503-399-6846

To subscribe
 Call: 800-452-2511

\$21 per year for home delivery
 \$22 per year for motor delivery
 \$30 per year mail delivery in Marion County
 \$38 per year mail delivery out of Marion County

Main Statesman Journal publication
 Suggested monthly rates:
 Monday-Sunday: \$22, \$20 with EZ Pay
 Monday-Saturday: \$17.50, \$16 with EZ Pay
 Wednesday-Sunday: \$18, \$16 with EZ Pay
 Monday-Friday: \$17.50, \$16 with EZ Pay
 Sunday and Wednesday: \$14, \$12 with EZ Pay
 Sunday only: \$14, \$12 with EZ Pay

In-Oregon mail delivery
 Weekly rates:
 Monday-Sunday: \$11.95
 Monday-Saturday: \$7.66
 Wednesday and Sunday: \$4.33

To report delivery problems or subscribe, call 800-452-2511

Packages

Continued from Page 1A

seas.”
 The business owners conducted a similar drive a year ago, and in February they encouraged community members to send cards and notes overseas as sort of a Valentines Day themed show of appreciation.

Throughout the balance of this month, the local Postal Connections are accepting donations from area residents, businesses and community members to compile “care packages” to be sent to military bases or local military personnel serving abroad.
 A provided list of recommended ideas is as follows:

- » Healthy snacks (jerky, trail mixes, granola bars and fruit snacks);
- » Drink mix packets

(Gatorade, lemonade, iced tea and Crystal Light packets);

» Microwavable food (Easy Mac, popcorn, Cup O’Noodles, Chef Boyardee and oatmeal);

» Non-perishable food (tuna cans/packets, fruit cups, peanut butter, Nutella, soups and other canned foods);

» Toiletries (travel-size shampoo, conditioner, body lotion, body wash, wet wipes and hand sanitizer).

“(Military personnel) work diligently to protect our country, day in and day out, and sometimes without the everyday essentials that they’re used to,” said Postal Connections COO Fred Morache. “In honor of Military Appreciation Month, we wanted to recognize our military members by surprising them with those comforts from home donated by people who appreciate the work they do...”