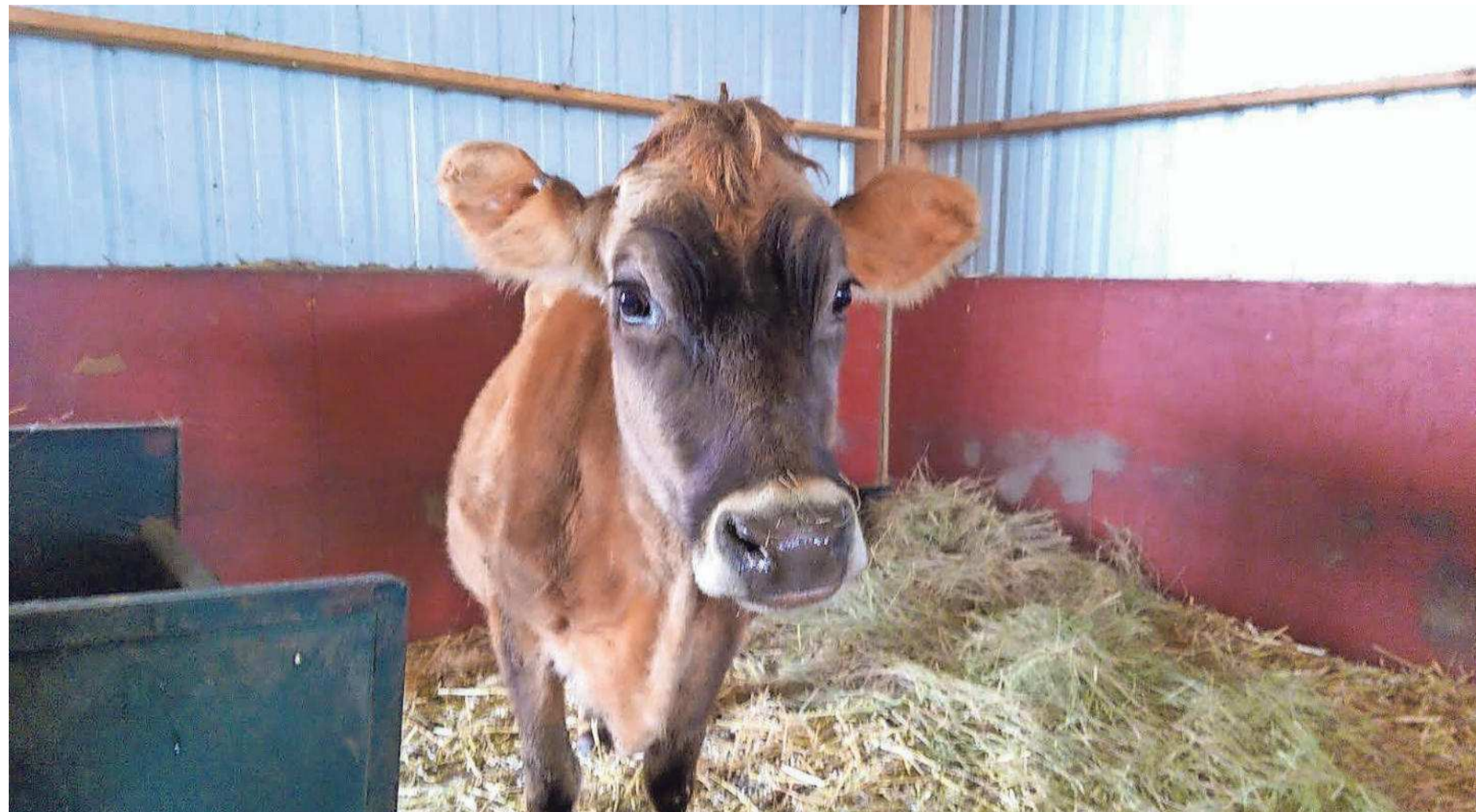


Life *in the* Valley

sanews@salem.gannett.com



SPECIAL TO THE STAYTON MAIL

Betsy, the Jersey cow, has found a new home at Lighthouse Farm Sanctuary.

A new home for the holidays

ANNETTE UTZ
FOR THE STAYTON MAIL

Betsy is a gentle, 3-year-old Jersey cow and, until recently, was in need of a home.

Brandy Schwerdt, of Beaverton, is a dedicated animal advocate. "It's the core of who I am - 100-percent committed to being a voice for our animals," she said.

So when a fellow animal rescuer made note of a Craigslist post regarding the Jersey, which was no longer needed, Schwerdt was eager to trot in. She reached out to animal sanctuaries throughout the state and Lighthouse Farm Sanctuary was the first to respond.

Lighthouse is a 501(c)(3) non-profit organization located southeast of Scio. According to its mission statement, the organization is "dedicated to the rescue, rehabilitation and, when appropriate, re-homing of abused and neglected farmed animals ... Through facilitating meaningful relationships between people and the animals we care for, we aim to help shine a light on the realities of animal agriculture and lead the way to a more compassionate world."

Schwerdt raised the \$350 necessary to cart the cow from a farm outside of Stayton to the sanctuary and as of Saturday, Dec. 17, Betsy has a new place to call home.

In a way, Schwerdt rescued two animals. Betsy is pregnant and due to deliver in February.

On the Lighthouse Facebook page, it asserts that "Betsy had spent her few short years on earth as a victim of the dairy industry." She's had her offspring taken away and the milk meant for her calves given to humans. Schwerdt added that she has also acted as a surrogate mother for calves bought at auctions. She will now enjoy a life of cow leisure.

"I was so fortunate Lighthouse was able to offer Betsy and her baby a for-

Volunteers add value

Lighthouse has volunteer work parties from 10 a.m. to 1 p.m. every Wednesday and from Jan. 7, every other Saturday.

Help is appreciated in all areas, including animal care, carpentry and general farm clean-up. Organizers would also like to find a handful of people who can commit 5 hours or more per week helping with the animals and farm maintenance.

Remember to wear closed-toe, sturdy shoes and clothes that you don't mind getting dirty. Gloves are provided but you are welcome to bring your own.

Dogs are not allowed at the sanctuary and as a vegan organization, Lighthouse asks that no non-vegan food (eggs, dairy, meat) are brought onto the property.

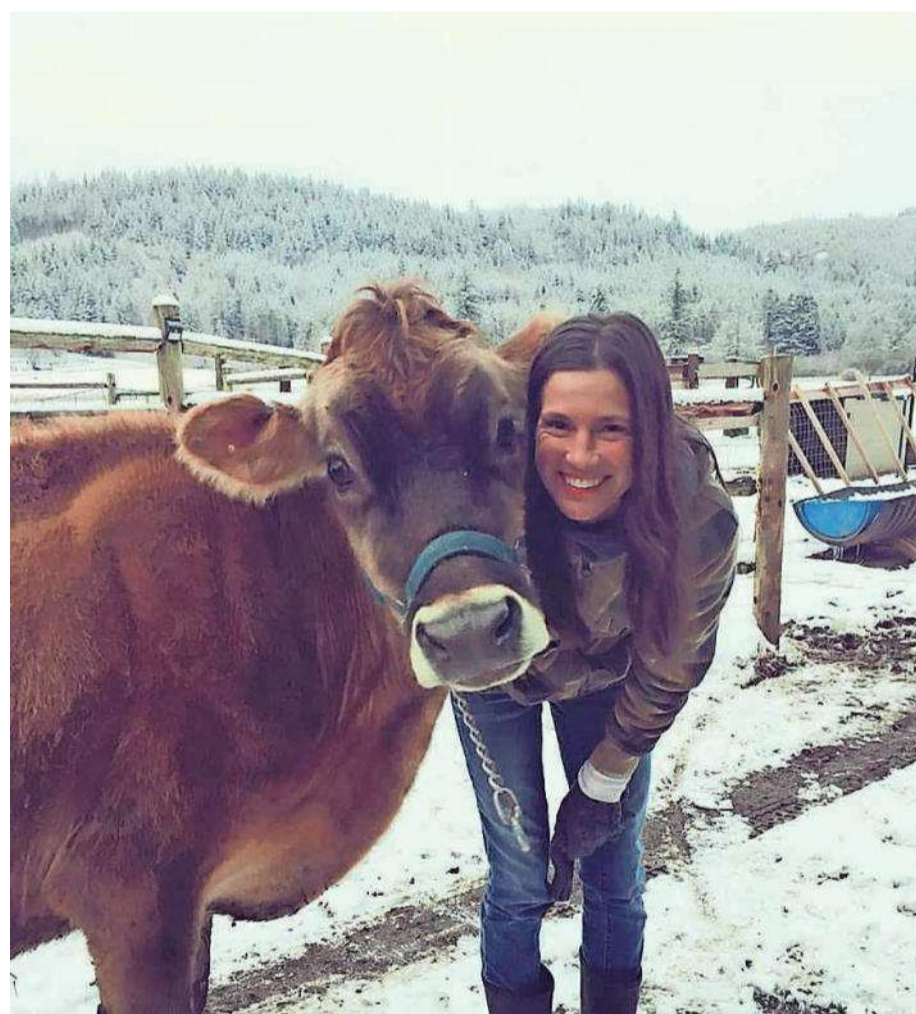
ever home," Schwerdt said. "Sanctuaries are so full in Oregon ... Now Betsy and her beautiful baby will live together in love and safety."

Transport was possible with the helping hands of Schwerdt and volunteers Teresa Talley and Michael Race and Betsy settled in quite comfortably.

"She is in a cozy, spacious stall for a 10-day isolation," Lighthouse Executive Director Gwen Jakubisin said. "That is typical protocol when we introduce new animals just to make sure she's healthy and there are no issues. After that, she will be in a pasture with our blind bison, Helen. However, while she is pregnant and a few months after she has her baby she will be stalled every night or until the weather warms up."

Caring for animals like Betsy and her 200 new friends can get expensive and requires truckloads of time and energy.

"Donated lumber, feed, hay and straw is always welcome," Jakubisin said. "We spend on average around \$5,000 a month just to feed them, so monetary donations are always wel-



SPECIAL TO THE STAYTON MAIL

Rescuer Brandy Schwerdt helps newcomer Betsy settle in at Lighthouse Farm Sanctuary.

come and needed. We are also in need of a good working tractor and a farm truck with trailer to haul animals and building supplies."

For Schwerdt, animal welfare runs in the family. Her mother, Marsha Chambers, is the founder/owner/operator of Hope's Haven, a no-kill dog shelter just west of Salem. Schwerdt also cares for a colony of 22 feral/stray cats in Beaverton, houses abandoned kittens in her apartment and is responsible for a pig's new digs at Free Spirits Farm Sanctuary in Eugene. This particular rescue, however, has been especially meaningful for her.

"I'm so happy it just makes me cry,"

she said. "Calves are removed from their mothers immediately after birth in the dairy industry. The fact that Betsy will be able to keep her baby is amazing. This is just such a beautiful story and it plants a seed."

Lighthouse Farm Sanctuary is located at 36831 Richardson Gap Rd., Scio. For more information or to volunteer, call 503-394-4486, email info@lighthousefarmsanctuary.org or visit www.lighthousefarmsanctuary.org or their Facebook page.

annetteutz1@gmail.com or follow at twitter.com/AnnetteUtz



PETER SUBAIYA | SPECIAL TO THE STAYTON MAIL

Olivia digs the attention she gets from Lighthouse volunteer Jennifer Parks.



SPECIAL TO THE STAYTON MAIL

Lighthouse Farm Sanctuary volunteer Markus Woltjer and Wallace see things eye-to-eye.