

Get Into the Big Puzzle Game, The St. Helens Mist's

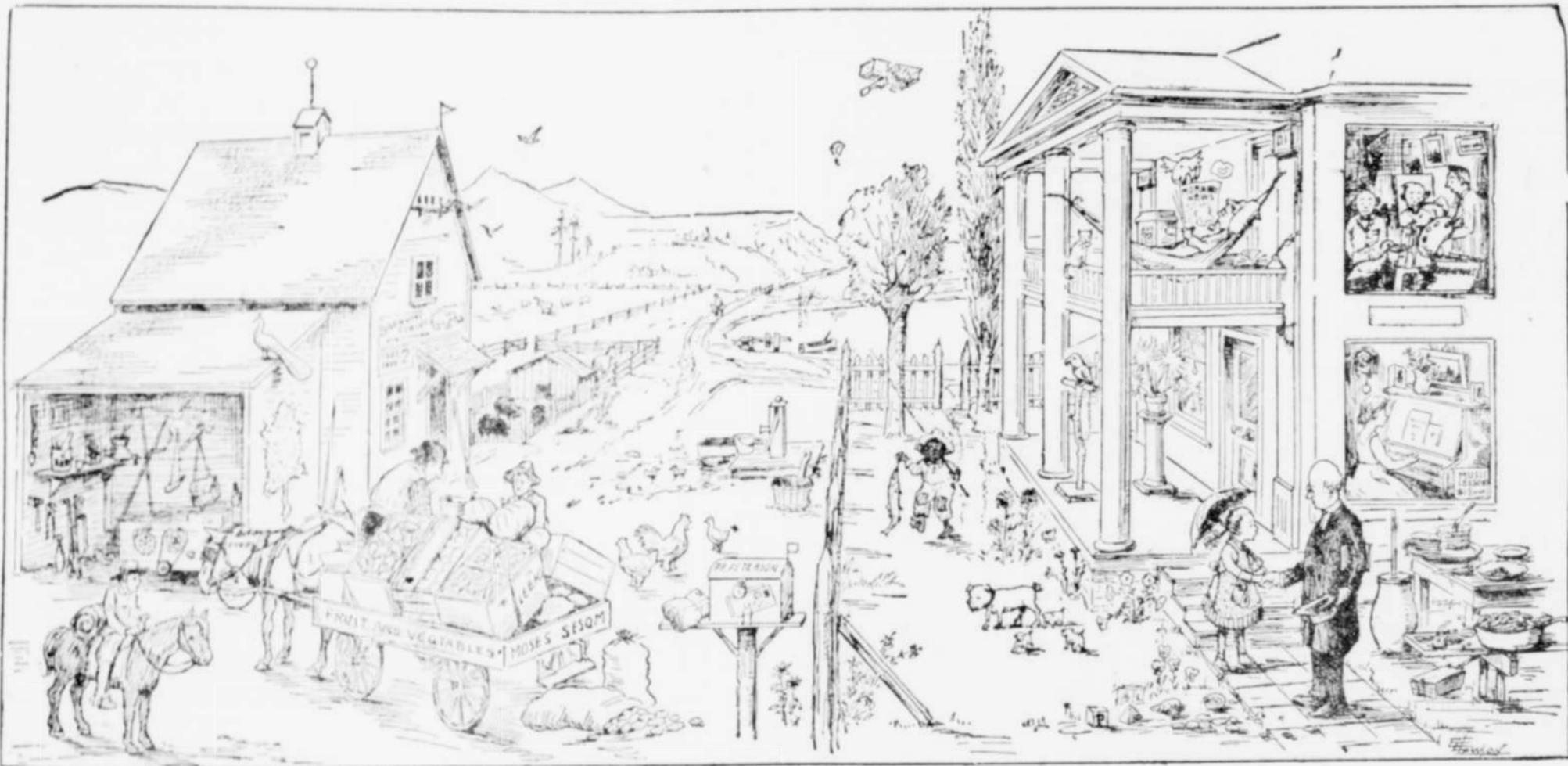
"P" WORD

PICTURE PUZZLE!

Provides Pleasant Pastime for Playful People. Prizes for Persons with Pep, Push and Energy

Win a \$50 Cash Prize

Open to Everybody How many objects beginning with the letter "P" can you find in this Picture?



CONTEST CLOSES APRIL 10TH. Copyright, 1922. Tribune Printing Co. Willmar, Minn.

To Our Readers

How many objects the names of which begin with the letter "P" can you find in this picture?

It's a big game in which everybody can take part. Who can find the most such objects? Take a pencil and get busy. Everyone in the home, Pa, Ma, Bobby, Mary Ann, Grandma and Uncle Bill. First see who gets the most at home. Then combine your list and send in the big list to the Mist office and if your list has the largest number of correct words you get a prize of \$3.00.

But if with your answer you send in \$2.00 for one year's subscription to the Mist you get \$10.00, if you send in two subscriptions you get \$20.00 as first prize; and if you send in three subscriptions including one new subscription you get \$30.00; and if you send four subscriptions, including two new ones, you will receive \$50.00. See table of prizes elsewhere in this announcement.

There is no hitch or trick to this puzzle. It is easy and above board. It's the contestant with the sharpest eyes that will find the most objects and win the big prize.

It costs nothing to try in the first class. You will want the paper for another year anyway so you might as well get into the second class. But to make the game really exciting and worth while get into the third class by sending us a new subscriber; or better still, into the fourth class by sending us two new subscribers and win a prize of \$30.00. With very little effort you can break into the fifth class and qualify for the \$50.00 cash prize.

It's going to be some fun. Now who gets the big prize? Can you find 50? Probably even more!

Here Are The Prizes Offered

	Class I	Class II	Class III	Class IV	Class V
First Prize	\$3.00	\$10.00	\$20.00	\$30.00	\$50.00
Second Prize	2.50	7.50	15.00	20.00	30.00
Third Prize	2.00	5.00	10.00	15.00	25.00
Fourth Prize	1.50	3.00	5.00	10.00	15.00
Fifth Prize	1.00	2.00	2.50	5.00	10.00
Sixth Prize	.50	1.00	2.00	3.00	5.00

RULES OF THE CONTEST

- Contest closes April 10, 1922, and all answers must be mailed on or before that day.
- Anyone living in or outside of this city may compete in this contest. Employees of this paper and anyone else connected with the Mist however, are barred from participating.
- Answers should be plainly written on only one side of the paper. Write your name and address plainly at the head of your lists. If you write of anything else use a separate sheet of paper.
- Only English words found in the dictionary can be used. Obsolete words will not be counted, however.
- A word used once cannot be used again as part of a compound word; and only compound words as given in the dictionary as such will be allowed.
- The same object can be named but once. This does not preclude however the naming of an object which is a part of another object.
- The word may be given in the singular or plural form but if the one is used the other cannot be.
- The first prize will be awarded to the contestant whose

answer has the largest and nearest correct list of words of objects (found in the picture) beginning with the letter "P." Second prize to the next, etc. Neatness and penmanship will not be taken into consideration, but every contestant should be careful about the spelling so that no mistake will be made.

9. Only one prize will be awarded to members of the same household, or to any group outside of the family who may have co-operated in the answering of this puzzle.

10. The judges will be three well known citizens of St. Helens having no connection with the Mist and will be selected for their fitness for such a task. The award of prizes as determined by these judges will be final and each contestant agrees to abide by their decision.

11. In arriving at this decision the judges will allow one point for each correct word. A margin of 15 incorrect words will be granted to each contestant to allow for a possible legitimate difference of opinion; but each incorrect word above that number will count one against.

12. If two contestants tie for first place the first and second prizes will be divided between the two pro rata according to their class. The next highest will receive the third prize, etc. If three tie for first place, the first, second and third prizes will be divided between the three in same manner, etc.

The Mist, St. Helens