

THE ST. HELENS MIST

Issued Every Friday by THE MIST PUBLISHING COMPANY

SUBSCRIPTION RATES

One Year \$2.00 Six Months \$1.25

Entered as second-class matter, January 10th, 1912, at the Postoffice at St. Helens, Oregon, under the act of March 3rd, 1879.

COUNTY OFFICIAL PAPER

Member National Editorial Association and Oregon State Editorial Association.

LEST WE FORGET

"The body of my son will arrive in Kerry this week." This was the first sentence of a letter addressed to Post Commander Wellington of The American Legion. It is a short, sentence, but it tells a long story and a pathetic one. It tells us that the last resting place of a soldier who fell in France, has been returned to the family home, and that the mother and father of the soldier know the spot where their son is sleeping. It tells of the supreme sacrifice of a soldier who went to defend his country. It tells of the heartaches of father and mother who remember the childish prattle of the son, of their fond hopes of his success in manhood which would bring joy to the now aching hearts.

No more honorable death could a man meet than to fall on the battlefield when in defense of his country and this was the lot of Albert Salmi. Peace to his ashes and honor to his memory. He died for his country's sake.

SIZES OF AMERICAN FARMS

The census bureau of the federal department of commerce today announces preliminary statistics as to American farms in 1920. The figures are subject to revision, but as approximations they permit comparison with those of the census of 1910. They deal with the number of farms by size and do so both for the United States as a whole and by states and geographic divisions. The sizes of the farms considered range from three acres and under to 1000 acres and over.

All American farms in 1920 numbered 6,448,366, an increase of 86,864, or 1.4 per cent. Farms of 20 to 49 acres are the most numerous, now numbering 1,503,734, an increase of 89,358, or 6.3 per cent. But farms of 50 to 99 acres and of 100 to 174 acres are almost equally numerous, respectively numbering 1,474,753 and 1,449,659. The increase in the number of farms of 50 to 99 acres was 26,684, but in the number of farms of 100 to 174 acres there occurred a decrease of 65,627.

The farms of 175 to 499 acres number 1,006,487, an increase of 28,312; those of 500 to 999 acres, 149,812, an increase of 24,517; those of 1000 or more acres 67,387, an increase of 17,252.

More than six-tenths of the farms under 20 acres are in the southern states. A large percentage of the farms of 20 to 49 acres also in the south. More than 45 per cent of all farms in the United States are between 50 and 174 acres in size. Among states having most farms of 500 acres or more comes Montana, where their number is 17,694, a number exceeded only by Texas and North Dakota.

Washington in 1920 reported 66,288 farms, as against 56,192 in 1910. In Oregon the numbers for the same years were 59,296 and 45,502. In Idaho 42,106 and 39,897. Montana made prodigious strides in increasing the number of farms during the decade, for in 1910 it had only 26,214, but 57,677 in 1920.

In Washington the farms of less than 20 acres is found most frequently, there being 16,973 of these, an increase of 6544; but the farms of 20 to 49 acres is almost equally numerous and has increased about as much. Farms numbering from 100 to 174 acres have decreased a third, but those having 500 acres or more have increased by a fifth. —Spokesman-Review.

THE TOBACCO INDUSTRY

According to a census bulletin, there were 1,894,400 acres planted in tobacco in 1920, while the production from that crop amounted to 1,508,051,000 pounds. There were imported during the year leaf tobacco and tobacco products to the value of \$28,542,000, while the exports of leaf tobacco were valued at approximately \$215,000,000, and of tobacco products at \$43,000,000. The combined production of cigars in registered factories and in bonded manufacturing warehouses numbered 5,729,754,000 and of cigarettes, 61,859,900,000, and of chewing and smoking tobacco and snuff 413,891,000 pounds. There were 15,824,000,000 cigarettes exported during the year, leaving 46,000,000,000 factory made cigarettes for consumption in the United States. Revenue collected during the year amounted to \$294,000,000.

GOOD CITIZENS

The Mist regrets that the community is to lose two of its most enterprising and energetic citizens. Mr. Wheeler has been a resident of St. Helens for several years and has done much to advance the community interest and although Mr. Bayard has been here a comparatively short length of time, he manifested his interest in the community by taking an active part in the Chamber of Commerce work and any other work which appeared for the city's interest. The community will miss both of them.

The cost of living is going down hill. The prices of Ford and Chevrolet have been reduced and gasoline is two cents per gallon cheaper.

NAVAL DISARMAMENT

At the present rate of increasing armaments the United States will be twice as strong as Japan upon the sea, in 1924, and stronger than Great Britain in battleships. The fleets of France and Italy are below Japan's strength, and are not so formidable as increasing in strength. Germany has the right by treaty to create a small navy. Other nations have no fleets that need to be considered.

A recent editorial in the Washington Post gives the following figures of the sums devoted to their armies and navies by certain countries in the year before the war as compared with last year.

United States—1914 \$245,000,000; 1920, \$2,506,000,000. Great Britain—1914, \$296,000,000; 1920, \$1,152,000,000. France—1914, \$361,000,000; 1920, \$1,023,500,000. Italy—1914, \$133,500,000; 1920, \$1,074,000,000. Japan—1914, \$96,000,000; 1920, \$272,000,000.

Senator Lodge comments on this subject: "Reduction of armaments means the greatest possible reduction in expenditures and money saving for the people."

There may be "something rotten in Denmark" but you can't make a Virginian believe it. His citizenship was changed over night by sales treaty and then comes the Volstead act and makes him dry where climate says he should be moist, and on top of that comes the income tax demanding from his what he bath not!—Sugarman's Indicator.

The increase in church and Sunday school attendance at the several churches in St. Helens speaks well for the community.

Funny business, this starting school on Labor Day and each director taking a day off from his work.

Clatskanie is to be congratulated on the splendid Labor Day celebration held in that live little city.

About time to begin to make your plans to attend the Columbia county Fair.

Sinnott Wins Praise

WASHINGTON, Aug. 31—Chairman Sinnott of the public lands committee of the house has been receiving congratulations on the part his committee planned in the work of congress up to the time of recess. In all, 65 measures became law and of these 12 came out of the public lands committee. Of the 130 measures which have passed the house, but as yet have not passed the senate, thirty were passed upon by the public lands committee.

Old Students Help New

The two days formerly required to register 2000 to 3000 students will be cut to a day and a half when the college year at O. A. C. opens September 19. The reduction is effected by the use of the services of old students who know the ropes to advise new students who have to determine just what course they want as well as how to get a hurry up registration. This plan helps the new students get their work better related.

Miles Cannon, State Commissioner of Agriculture of Idaho, reports that 40 per cent of the prune crop of Idaho for 1921 will be sold at contract prices ranging around \$40 a ton, delivered at the packing plants. Twelve hundred cars of Idaho prunes valued at approximately \$1,000,000, will be shipped out of the state.

Prince Axel of Denmark, otherwise commander of the Danish torpedo ship "Asia," before his departure from Puget Sound, purchased a block of stock in the Universal Shipping and Trading Company of Seattle, according to announcement made by Vice President Matthews of the company.

State of Ohio, City of Toledo, Lucas County— Frank J. Cheney makes oath that he is senior partner of the firm of F. J. Cheney & Co., doing business in the City of Toledo, County and State aforesaid, and that said firm will pay the sum of ONE HUNDRED DOLLARS for any case of Catarrh that cannot be cured by the use of HALL'S CATARRH MEDICINE. FRANK J. CHENEY. Sworn to before me and subscribed in my presence, this 6th day of December, A. D. 1914. (Seal) A. W. Gleason, Notary Public. HALL'S CATARRH MEDICINE is taken internally and acts through the blood on the Mucous Surfaces of the System. Druggists, Inc. Testimonials free. F. J. Cheney & Co., Toledo, Ohio.

BOWLING ALLEY

West St. Helens, Opposite Bakery. A pleasant game. Come out and bring your friends for a contest. GEORGE S. HOLT, Proprietor.

IF YOU WANT your Household Effects, or House, Farm or Equipment sold, see me. I can sell it for you at Auction and get you good results.

P. J. KAVANAGH

St. Helens Oregon

To patrons of the

St. Helens Steam Laundry

Owing to popular demand we are establishing a pound system for rough dry family washing, at 8c per pound, handkerchiefs extra 1c each. Minimum charge \$1.20, or 15 pounds. Bundles less than 15 pounds will be charged on our regular rough dry or finished slips.

Phone 85J and our wagon will call. We strive for better laundry work and service at a price anyone can pay.

WET WASH

25 Pounds for \$1.00

ST. HELENS STEAM LAUNDRY

BE SURE and see our line of HEATERS, RANGES

WE SELL stove pipe and all house furnishing equipment

E. A. ROSS

Masonic Bldg. St. Helens

DON'T BAKE IN SUMMER HEAT....

Baking in the home kitchen in the summer heat not only tries one's temper, but is exhausting work. And really, after all, the only difference between

Ramsey's Bread

and home baking is the trouble of baking. It is expertly baked by processes which bring to you all the goodness and flavor of the finest wheat.

White Clover Ice Cream

is delicious; none better made. All kinds of pies, cakes and pastry. Fresh candies and soft drinks.

ST. HELENS BAKERY

J. E. RAMSEY

SEE

THE RUTHERFORD REALTY COMPANY

and Save Money and Time.

If You Want a Good City or Country Home.

NOW IS THE TIME TO GET A HOME, while prices are reasonable. Let your rent money make your payments. Here are some good buys:

- 4 room house with woodshed, chicken house, with good garden soil lot for \$700.00. A bargain.
3 room house with 4 good lots, near pavement—chicken park—I lot in strawberries—a few fruit trees. \$1100.00.
6 room house, modern with sleeping porch—3 soil lots 1 1/2 blocks from high school—a fine home at \$3000.00. Good terms.
3 acres on pavement near St. Helens. 2 room shack—1 acre clear; easy terms.
4 acres—good soil on macadam road—nearly all cleared and fenced. \$1000.00 on easy terms.
10 acres with 5 room house, barn and other buildings, all fenced good well and on macadam road—less than 1/2 mile from depot. A bargain at \$2300.00. Well worth \$3000.00.

RUTHERFORD REALTY CO.

PHONES—Office, 123; Residence 38-J and 74-W

MOTOR OIL AND GREASE WEST SIDE GARAGE (Successor to Hardin) Hobbs & Waldron, Props.

EXPERT REPAIRING

Of all makes of cars; courteous and prompt service; gasoline, oils and complete garage service; all work guaranteed.

BATTERY CHARGING AND REBUILDING HOBBS BATTERY STATION

USED CARS FOR SALE

Houlton, Ore.

Phone 90



Money to Burn?

Considerable comment has been excited by the fact that during 1920 the waste in the United States exceeded \$500,000,000.00 notwithstanding that no serious conflagration occurred.

The answer to the puzzle is a short and ugly one: The immense total, the heaviest since 1906 when the San Francisco catastrophe took place, was made up of individual fire losses running from a few thousands upward, that were recorded day after day, with relentless regularity. The rate of burning in 1920 approximated \$1,370,000.00 a day, or, in other words, there was that amount of material wealth destroyed by fires, most of which were preventable. The public generally seems to think that we have money to burn, but it must be awakened to a realization of the fact that we cannot possess our wealth and at the same time destroy it.

Since the beginning of 1921, unfortunately, there has been no apparent abatement of the waste, although it is naturally too early for accurate estimates. On a single day recently, however, the National Board of Fire Underwriters received reports of fires throughout the country reaching the shocking total of \$5,877,000.00.

We insure your Automobile, Accidents, Barns, Business, Crop, Home, Liability, Life, Plate Glass, Etc., Etc.

Fire Insurance Agency

Columbia County Bank

ST. HELENS, OREGON

TRY A MIST WANTAD FOR SALES

\$100

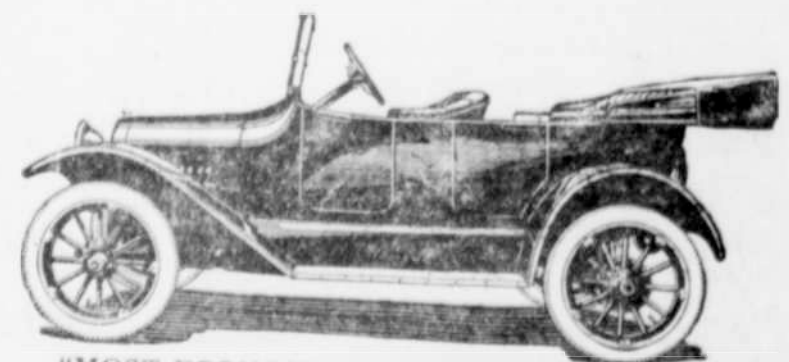
\$100

\$100 REDUCTION ON CHEVROLETS

We have just received the good news that Chevrolets have taken still another drop of \$100 on all model "Four-Ninety" cars. Below are the approximate prices F. O. B. St. Helens. Buy now while they are the lowest in price. We can make immediate delivery.

Table with 2 columns: Car Model and Price. 490 Touring \$675.00, 490 Roadster \$675.00, 490 Coupe \$1120.00, 490 Sedan \$1120.00, 490 Delivery \$684.00.

Unquestionably the best automobile value in the world today. The product of experience—produced by the General Motors Corporation—largest manufacturers of motor cars in the world.



"MOST ECONOMICAL TRANSPORTATION"

Copeland Auto Co.

\$100

\$100