

Beautiful Crater Lake, Nestled High in the Cascades of Southern Oregon, World's Eighth Wonder



Crater Lake national park consists of 100 square miles on the summit of the Cascade Range in southern Oregon, the gateway to which is the central feature of this park. At one time a gigantic shielded mountain, greater than Mount Rainier. Like them, it was an active volcano, built up by successive eruptions from a central vent. Then in part torn down by erosion. How and when, it no one man knows, but by some volcanic cataclysm of nature the mountain wrecked itself and all that was left of it disappeared. An immense crater, six miles wide and four thousand feet deep, was formed. The inner slopes gradually in all directions marked with deposits of lava flow and disintegrated material. The outer slopes gradually in all directions marked with deposits of lava flow and disintegrated material. The outer slopes gradually in all directions marked with deposits of lava flow and disintegrated material.

cubic miles of material disappeared. In the course of time this crater began to fill with water until a lake was formed two thousand feet deep with a surface area of more than twenty square miles. Where did all this water come from? The rock strata, except in one place, all slope away from the lake. The inner drainage area of the crater walls is so small compared with the whole, that only a small quantity of water reaches the lake in the form of springs or drainage. It must follow then, that the source of most of the water is the sky. There is no place else from which it could come. Crater Lake is in a region of heavy precipitation, accentuated by its great altitude, and snow falls many feet deep each winter. There is snow every month of the year except August, and snowstorms are not unknown even in that month. The water of Crater Lake is cold, clear, pure and wonderfully blue in color. It is an incalculable blue, generally deep indigo, but varying with the time of day and the changes in atmospheric conditions. Under certain conditions it reflects all the brilliant, changing

colors of the most beautiful opal. The crater walls above the lake surface present a shore line about 20 miles in extent, of precipitous and fantastic rock formation from six hundred to two thousand feet in height. A jagged pinnacled island rock 180 feet high, called the Phantom Ship, rises near the base of Dutchman's Cliff. A very beautiful and symmetrical timber-covered, crater-topped cinder cone, called Wizard Island rises 763 feet above the lake surface, the underlying lava field forming other smaller islands nearby. A deep depression in this lava field contains a small lake called the Witch's Pool. It is remarkable from the fact that it is a lake within a lake, as Wizard Island is a volcano within a volcano, and the crater of Wizard Island is a crater within a crater. The ensemble forms a picture of wondrous beauty and awe-inspiring grandeur that no pen can adequately portray. Crater Lake is unquestionably one of the greatest scenic wonders of the world. To the lover of the wonderful and the beautiful in nature it is never disappointing. It may not overwhelm

you with awe at first, but its majesty grows upon you until the mind begins to comprehend the forces of nature, both in time and energy, that created this effect. In Indian story and tradition this lake is "the abode of spirits," and the Indian will not look upon the waters. **How to Get There** Automobile tourists can reach the park from any of the main highways or Oregon. Branching from the Pacific Highway at Medford, Ashland or Central Point good roads run thru the Rogue River valley, famous for its fruit orchards, up to the canyon of Rogue river, noted for its splendid fishing streams, past the great California-Oregon power plant at Prospect, thru the national forest of giant pines, fir and hemlock, and up the cinnacled Castle Creek canyon. On the way may be seen Mill Creek falls, Rogue River rapids, natural bridge, Union Creek gorge, the Rabbit Ears and Union Peak. There are sixty miles of good roads within the park, recently completed, the central feature, the "Rim Road," encircling the lake in a distance of

about thirty-five miles. This road is destined to become one of the world's famous scenic drives. For varied and constantly changing color effects combined with the grandeur and scope of its marvelous scenic beauty, it cannot be surpassed. **Public Transportation** The Crater Lake company operates an automobile stage line daily between Medford and Crater Lake and in connection with the Southern Pacific company, make special excursion rates from all points. **Crater Lake Lodge** Is located on the rim of Crater Lake at an elevation of 7,200 feet, overlooking the lake which lies 1000 feet below. From here may be seen Mt. Thielsen to the north, Mt. Scott to the east, Mt. McLaughlin and Mt. Shasta to the south as well as a grand panoramic view of mountains and forest, the Wood River valley and Klamath Lake region 40 to 60 miles away and 3000 feet below. In connection with the lodge, tents are provided as sleeping quarters for those who prefer them to rooms in the building.

SOLDIERS ENTERTAIN SAILORS

When the Pacific fleet reaches Puget sound early next month, not the least of the resultant celebration will be navy day at Camp Lewis. Officers at the big cantonment are planning various entertainments, and the doughboys are preparing to lock arms with the gobs and show them the time of their lives. They will be given a scenic voyage along the Pacific highway in army trucks; they will be fed army chop in the mess halls; they will be afforded every facility for the sailors' favorite of horseback riding; mounting games for sailor riders and numerous field sports, including tugs of war between army and navy teams; will make up an afternoon program at the camp athletic field.

NOTICE—MICHIGANDERS
The Michigan people of Columbia county will hold their annual basket picnic in Godfrey Park, St. Helens, on Thursday, August 28th. Dinner will be served at 12 o'clock. All Michiganders are most cordially invited to attend and bring picnic lunch—Effie Wilson, Secretary. 34-36-3c



A GROWING BOY
needs lots of good, nourishing food. But he wants it palatable as well as nourishing. Give him a good liberal supply of bread spread generously with our superfine butter and topped off with plenty of fresh fruit. Then he'll have a meal he'll enjoy and one that spells nourishment with every spoonful or bite. **Fresh Buttermilk For Sale**
St. Helens Co-Operative Creamery Assn.

ROSEBURG AND ASHLAND METROPOLITAN CITIES

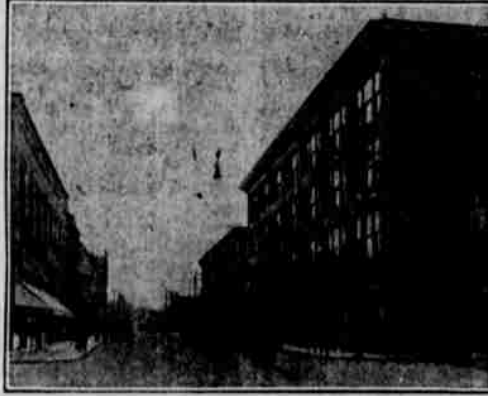
Roseburg, with a population of 10,000, is located near the center of the river valley, in southern Oregon. The main line of the Southern Pacific railroad. It is also the terminus of the Pacific & Eastern railroad. Roseburg is the largest city, most important financial and shipping center of the district. It is also the gateway to Crater Lake. The chief developed industry to Medford is fruit raising—of the most highly developed apple and pear orchards of the west are nearby. A variety of fruits, berries and market products are also grown, and alfalfa. Other industries are dairying, stock raising, mining, lumber, etc. **Medford** is the most rapid growth, with a population of 10,000. It is the seat of the population increase during the past census period was 393 per cent. **Ashland** is a greater length of first-class streets, there being a twenty-five miles; also twenty miles of cement sidewalks, twenty-three mile gravelly water. The water is brought from Crater Lake reservoir in the Cascades. The city has gas and light and power, a public library, a four-story building, \$50,000 passenger terminal, several first-class hotels, four large new opera houses, five fruit packing plants, several warehouses, two box factories, two lumber mills, two fruit canneries, a large fruit evaporator, two large ice plants, flour mill, door factory, cabinet and furniture factory and several other industries. **Medford** has a modern equipped school and four other public buildings, with first-class business college, Catholic music conservatory, eleven and two newspapers. (The Sun and the Sun, both of which have leased wire Associated Press.) There are about 30 churches and a University club. The lake national forest service

and the offices of the county pathologist and the U. S. weather bureau for southern Oregon are located here. Medford brags of her beautiful streets, elegant homes and modern business houses.

Ashland is located in the upper end of the Rogue River valley, among the foothills of the Siskiyou mountains. It is the second city in size in Jackson county and is the division point on the main line of the Southern Pacific railroad. It is noted as a home town and health resort. It has a number of mineral springs, including hot and cold springs, sulphur, lithia and soda springs, and also for its beautiful park, one of the prettiest on the Pacific coast, that cost \$175,000. It has maintained a chalet for a quarter of a century and has a new auditorium that seats 4000 people. **Ashland** is also quite a fruit shipping point and dairying and farming are important industries. It has gas and electric plants, creamery, flour mill, ice plant and many other industries. **Ashland** has a high school building and a public school system second to none. It has a number of churches, splendid homes, nice streets, many of which are paved and good business houses. Most of the lodges are represented there and has a number of women's clubs. The Tidings, a semi-weekly and the Record, a weekly, are both published there.

GOVERNMENT OFFERS FLOUR FOR SALE

The United States Grain Corporation announces that it is prepared to offer flour for sale in carload lots in 140-pound jute sacks, straight grades, both soft and hard wheat blends, at \$10.00 net cash, at our four basic points, namely, Portland, Astoria, Seattle and Tacoma. They will endeavor to furnish flour to buyers at other points from nearest mills, thus saving them freight charges to and or from terminal points. But if compelled to furnish from the terminal points mentioned, freight will be for buyer's account. **Jobbers and wholesalers** purchasing such flour will not be permitted to add more than 75 cents per barrel as profit and must in turn require that the retailer will not sell at more than \$1.25 per barrel profit in original packages, and not higher than 7 cents a pound for broken packages of any size.



A STREET SCENE IN MEDFORD

RIDGEFIELD K. OF P. ARE ENTERTAINED

Avon Lodge Host to Brother Lodgesmen from Ridgefield. Avon Lodge No. 62, K. of P., was host Tuesday night to visiting brothers from Lake River Lodge of Ridgefield. The 25 members of the Ridgefield lodge were entertained by selections of the St. Helens male quartette. An instrumental solo by Miss Dorris Bothwell and a vocal solo by Miss Susie Kettel added to the evening's entertainment. After the social session, a banquet was served and the orators of both lodges were given an opportunity to demonstrate their eloquence.

DANCERS ENTERTAIN

Miss Dorris Bothwell closed the term of her fancy dancing school by giving a musical and dancing program in which the following took part: Marian Morgan, Louise George, Jane Day, Betty Day, Patricia Dixon, Ethel Dixon, Marion Morton and Virginia Morton. Miss Florence Van Gilder rendered several vocal solos and Miss Dorothy Alken was the accompanist. The manner in which the difficult but very pretty dances were executed, reflected much credit on the teacher as well as the pupils. Mr. and Mrs. George Perry had as guests Sunday, Dr. C. Brouse and family and Dr. C. VanVlerah of Portland.

You'll Land All Right



if you make this your supply house for anything in the way of high class Groceries. You won't have to worry about qualities. Our reputation is a guarantee of those. You can be your own judge of values by simply comparing our prices with those of others for Groceries of similar class.

Our List of Specials

Watermelons, Cantaloupes, Cassabas, Apples, Peaches, Fresh Vegetables.

St. Helens Union Store

St. Helens, Oregon Telephone 80

Make Out Your Grocery List



and send it to us with confidence that every item will be just as you want. We have no favorites to push for better profits. We are in business to sell you the groceries you want at the prices you expect to pay or less.

- Council Deviled Meat, 4 for 25c
- Shredded Wheat, package 15c
- Tree Tea, per pound 60c
- Crescent Baking Powder, 5-pound can \$1.00
- K. C. Baking Powder, 25-oz. can 25c

ROY & FREDERICKSEN

PHONE 42 MONEY SAVING GROCERS

"OREGON"—YOUR UNIVERSITY

THE UNIVERSITY OF OREGON
SCHOOLS AND DEPARTMENTS
The University includes the College of Literature, Science and the Arts, and the special Schools of Law, Medicine, (at Portland), Architecture, Journalism, Commerce, Education and Music.
SPECIAL FEATURES
A beautiful campus, facilities of specialists, modern facilities, low cost, with many opportunities for self-help, "athletics for everybody," a really democratic atmosphere—and the famous "Oregon Spirit."
For a catalogue, illustrated booklet or specific information, address:
THE REGISTRAR, UNIVERSITY OF OREGON, EUGENE, OREGON.

SUNSET THEATRE

HOULTON

SUNDAY, AUGUST 4—
Tom Moore in "A MAN AND HIS MONEY"

This is extra good but prices remain the same.

WEDNESDAY, AUGUST 27
Mable Norman in "DODGING A MILLION"

There are many laughs and merry thrills in this. Don't miss it.

PRICES 10 And 20 CENTS

A Check Presented

at this bank is so promptly paid that the reputation of its maker cannot fail to stand high in business circles. An account here is a distinct asset to a business man or woman. We shall be glad to have you open one.



FIRST NATIONAL BANK

Member Federal Reserve System
FRAS. GRAHAM, President H. A. CHILDS, Cashier