

INDUSTRIAL REVIEW

Roseburg ships squash by the carload.

Canby's cheese factory is in operation.

Springfield—Booth-Kelly mill resumes.

Cheese factory is talked of for Donald.

Plans are under way for a creamery at La Pine.

St. Johns—Monarch mill expects to operate soon.

Hood River—The court house is being improved.

Monmouth tile factory plans to make 1,000,000 tile.

Coos Bay leads in lumber shipments to California.

Grants Pass will soon have a spray manufacturing plant.

Auxiliary fish hatchery may be established at Roseburg.

The Elks' new lodge at Klamath Falls is now completed.

St. Johns Woolen Mills has enough orders to run until November.

J. P. Horelock plans to build a modern garage at Wallowa.

Plans are on foot for a \$30,000 meat packing plant at Salem.

North Bend manufacturer ships cauliflower crates to California.

Wasco county will build a scenic highway from The Dalles to Mt. Hood flat.

The sum of \$800,000 passes through Ontario bank for livestock in 1915.

Portland Union Stockyards will be enlarged 25 per cent at a cost of \$50,000.

The Southern Pacific Co. announces it will build from Coos Bay south to Eureka.

Lumber to the amount of 3,000,000 feet left Coos Bay in one day on three ships.

Steamer line from Vancouver, B. C., to Australia, may make Portland port of call.

A 200,000 foot capacity mill seems assured for Sutherlin, also 15-mile logging road.

SPRAYING CONTROLS PEACH LEAF CURL

Oregon orchardists are given assurance that correct spraying methods will control peach leaf curl. The kind of spray, time and methods of application, and other important data, are outlined in the following paper by H. P. Barrs, head of the Plant pathology department of the O. A. C. Experiment Station:

Peach leaf curl is a disease which undoubtedly causes thousands of dollars of loss each year in the state of Oregon. Practically all of this loss is unnecessary since this disease can be satisfactorily controlled with one spraying given at the proper time of year, as the experience of a great number of growers in all parts of the state indicate. This article is written for those who have failed in the past to control this disease and for those who will have this disease to contend with as their newly planted orchards get a start. The writer is confident that, barring accidents, any peach grower can control this disease to his own satisfaction if he follows carefully the directions set down in this article.

Peach leaf curl is a disease caused by a fungous parasite. The infections of this fungus occur early in the spring just as the tender young leaf points are emerging from the buds and the infections are particularly bad when the weather is moist and warm just at this stage. Some varieties of peaches are much less seriously affected than others. When the delicate infection threads of the fungus have penetrated into the new leaves they spread all through the leaf tissues and the leaf becomes distorted, abnormally thickened, and of an unnatural color. The whole leaf may be affected; in fact, a whole twig may be affected, but in other instances there may occur only a few separate patches of leaf surface affected by the disease. By the middle of the spring the surfaces of these distorted leaves become powdery with the spores or reproductive bodies of the fungus which are being discharged

Oregon Experiment Station to determine whether or not this is true under Oregon conditions as well. Whatever the results of these tests may be, it is the experience of Oregon growers that a thorough application given within two weeks before the opening of the buds will have successful results. We recommend, therefore, at the present time, that peach growers spray their trees in February a week or two before the buds are expected to begin to come out.

If the presence of San Jose scale in the orchard is suspected, use lime sulfur 1 to 10. If not, use Bordeaux mixture 6-6-50. Successful control, however, cannot be expected unless the work is thoroughly done. Every bud must be covered with the spray material. This is not an easy task but the results are worth the effort. A mist spray under considerable pressure will generally give the best results.

SCAPOOSE

R. Snyder has been suffering with a severe attack of heart trouble of late.

Miss Libbie Fowler spent a couple of days in Portland last week, with friends.

Mrs. Ruby Joy Fisher presented her husband with a fine baby girl last week.

Mrs. May Getciell went to Portland Monday to receive special nerve treatments.

Dix Holaday has gone to Vancouver, to live with his aunt and attend school at that place.

Fred Smith has been confined to his home for about two weeks, but is again able to be out.

Fred Grant, who has been away at work, has returned home for the purpose of doctoring the grippe.

The young people had great fun sliding and coasting on the hill till the silver thaw put an end to it.

Rev. Johnston put on lantern slides of India Sunday night and gave a description of the views instead of his usual sermon.

G. B. Milloy went slipping up the

NOTICE OF SETTLEMENT OF FINAL ACCOUNT

In the County Court of the State of Oregon, for Columbia County. In the matter of the estate of Richard Cox, deceased. Notice is hereby given that Annie Cox, executrix of the estate of Richard Cox, deceased, has rendered and presented for settlement, and filed in said Court, her final account of her administration of said estate; and that Saturday, the 4th day of March, 1916, at the hour of 1 o'clock P. M. of said day, at the Court room of said Court, at the Court house, in the city of St. Helens, Columbia County, Oregon, has been duly appointed by the Judge of said Court as the time and place for the settlement of said final account, at which time and place any person interested in said estate may appear and make and file his objections thereto, or to any particular item thereof, and contest the same.

Dated February 4, 1916.

ANNIE COX, Executrix of the Estate of Richard Cox, Deceased.

J. W. DAY, Atty for said estate. 7-5

Small farm wanted; lowest cash price. L. Corbin, Portland, Ore. 2t.

NOTICE OF SETTLEMENT OF FINAL ACCOUNT

In the County Court of the State of Oregon, for Columbia County. In the matter of the estate of Emeline Meeker, deceased. Notice is hereby given that Martin White, administrator with will annexed of Emeline Meeker, deceased, has rendered and presented for settlement, and filed in said Court, his final account of his administration of said estate; and that Saturday, the 4th day of March, 1916, at the hour of 2 o'clock P. M. of said day, at the Court room of said

Court, at the Court house in the city of St. Helens, Columbia County, Oregon, has been duly appointed by the Judge of said Court as the time and place for the settlement of said final account, at which time and place any person interested in said estate may appear and make and file his objections thereto, or to any particular item thereof, and contest the same.

Dated February 4, 1916.

MARTIN WHITE, Administrator with Will Annexed of the Estate of Emeline Meeker, deceased.

J. W. DAY, Atty for said estate. 7-5

SUNNY BROOK DAIRY

The place to buy your Pure Milk and Cream. The Milk furnished from this farm is from cows that have been tested by the State Vet. ABSOLUTELY CLEAN AND SANITARY.

Milk, per pt., 7½c. Cream, per pt., 20c. Milk, per gal., 20c.

SATISFACTION GUARANTEED

E. W. SAXTON, Prop.

Phone 106-5 WARREN, OREGON

WHITE & WILSON

HOULTON

LIVESTOCK, POULTRY AND PRODUCE

HAY, FEED, HIDES, FURS

We are in the market for buying cattle, beef cattle, veal, pork and poultry. We pay cash for everything.

For Coughs, Colds, Bronchitis and other Diseases of the air passages, use

Deming's White Pine with Tar Cough Cure

Taken in conjunction with

Deming's Cold Tablets

is just the thing.

A. J. DEMING, DRUGGIST

J. P. NORDIN

On the Strand

WATCHMAKER AND JEWELER

We do all kinds of jewelry repairing and manufacturing, Stone Cutting and Polishing, Diamond Setting, Engraving and Monograms. Fine Watch repairing a specialty. ALL WORK GUARANTEED.

GIVE US A TRIAL

All Buses Call at Hotel Courteous Treatment

STOP AT

ORCADIA HOTEL

THOS. ISBISTER, Prop.

Chicken Dinner Sunday 35c RATES \$1.00 PER DAY AND UP. Special Rates to Regular Boarders.

DO YOU want to be convinced that we have the Biggest Hardware Values in the market? That we have what you want right now? That's what we want to do, and if you need PAINT, OILS, SASH, DOORS, BUILDING PAPER or WALL PAPER, let us figure with you.

MUCKLE HARDWARE CO.

ST. HELENS, OREGON

EUROPEAN PLAN AMERICAN PLAN

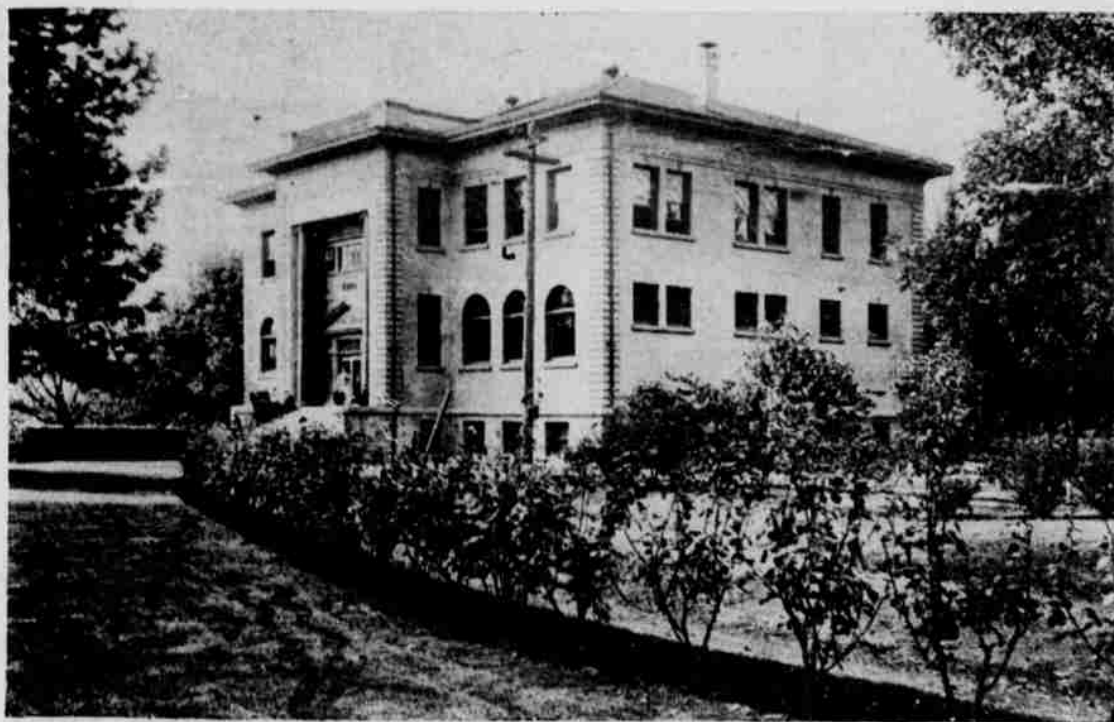
EVERYTHING MODERN AT THE

ST. HELENS HOTEL

J. GEORGE, Proprietor ALL BUSES CALL AT HOTEL

RATES \$1.00 AND UP

SPECIAL RATES TO REGULAR BOARDERS



LIBRARY, UNIVERSITY OF OREGON, EUGENE, OREGON

Albany has two new industries—mink and pheasant raising for commercial purposes.

Astoria Chamber of Commerce is considering the establishment of a fruit and vegetable cannery.

A \$200,000 steam schooner will be built by Hammond Lumber Co. at Humboldt bay for northwest trade.

Eugene Chamber of Commerce starts move to drain 70,000 acres of wet land in Lane, Lincoln and Benton counties.

One hundred carloads of hops have been sold to London firms by the Willamette valley growers and will be shipped at once.

The Ferris bill as placed before the senate, is little changed and will hamper industrial development of Western waterpower states if passed.

The S. P. Co. has spent \$9,000,000 to date on Coos Bay line. An industry that will spend that much money in the face of hard times deserves encouragement.

Factories for the manufacture of peppermint oil, kitchen cabinets, knockdown chicken coops, bee hives and incubators have been suggested for Salem.

Astoria's plan for a municipal boat line to take freight away from the railroad that pays a big share of the taxes to run the boats, will not have a tendency to bring railroad capital into Astoria.

Municipally owned public utility plants should come under rulings of Public Service Commission and be required to keep books according to forms furnished by the commission, in order that taxpayers may know where revenue goes instead of paying deficits and interest out of the general fund, says a member of the Oregon Public Utility Commission.

at this time. These are carried by air currents all through the orchard and will eventually result in the infections of the next season. After discharging the spores, the leaves that are affected shrivel up and hang, dead and brown, to the branches for a long time. Great injury is done where a large percentage of the leaves on a peach tree are affected even though the tree may put out a new growth of leaves. The vitality of the tree and the quality and yield of fruit are greatly reduced. Furthermore, a tree may die from the effects of the disease when it suffers two or more successive severe attacks.

Years ago it was found that by spraying the trees thoroughly with Bordeaux mixture 4-4-50 or with lime sulfur 1-10 just before the buds began to open, this disease could be controlled. A good many growers, however, wait until the last minute before making the application and in a great many cases find the weather conditions such that spraying is impossible at that time. Consequently delayed application is often made very soon after the buds begin to come out, but unfortunately in such cases a great part of the infection has already taken place and practically no beneficial results come from this delayed spraying.

It has been found that while spraying immediately before the buds begin to open does control the leaf curl, yet a spray given a week or more before will have exactly the same effect. Recent experiments by the Cornell University Experiment Station, even, indicate that spraying any time after December 1 will be effective if thoroughly done. Experiments are now under way at the

street the other evening and took a fall and sprained his ankle, which is causing a great deal of trouble. He is now wearing his foot in a cast.

Miss Athline Tolly returned to Beaver valley last Wednesday night to take up her duties as teacher, and then the weather took another decided change. What tyrannical weather we are having.

The Ladies' Aid met at the home of Mrs. C. H. Johnston last Thursday and elected the following officers: Mrs. James Pomeroy, re-elected president; Mrs. M. E. Price, first vice president; Mrs. R. Niblock, second vice president.

Mrs. Edgar Stevens has been seriously sick. Mrs. Goin of St. Helens, has been helping to care for Mrs. Stevens. However, a telephone message was received, calling Mrs. Goin home on account of her daughter, May, being sick.

Lloyd, Watt and Vera Price, Helen, James and Victor Watts and Loren and Gladys Johnson spent Saturday and Sunday with Miss Gladys Perry. Wonder if her father, N. A. Perry, didn't conclude it was a case of "bringing up father."

Dr. Edwin Ross of St. Helens, was called Monday to attend Little Lawrence Watts, who has a bad attack of pneumonia in the right lung. The little fellow went through the same siege last June, when the left lung was affected. He is improving at present.

Capt. Robt. Dollar, largely interested in shipping in the Northwest, says uncertainty of present laws prevents upbuilding of merchant marine and advocates creation of shipping board by congress to recommend means for upbuilding shipping industry.

The Strand

"WE AIM TO PLEASE"

SATURDAY afternoon evening

We will show for your approval

LILLIAN WALKER in a two part comedy

PLAYING THE GAME also a thrilling railroad story

"NERVES OF STEEL"

SUNDAY AND MONDAY afternoon evening

LILLIAN DREW AND CAMILLE D'ARCY

In a thrilling three part story

"THE REAPING"

a story of life as we sometimes find it

A GOOD COMEDY, TOO

TUESDAY AND WEDNESDAY evening

Another Feature

JESSE STEVENS, BESSIE LEARN AND JOHN WALKER

in that beautiful romance

"GIRL OF THE GYPSY CAMP"

"They say it's good"

"CAPTAIN KIDD" is the comedy

We shall continue the serial

"THE BROKEN COIN" on every

THURSDAY AND FRIDAY Beginning February 10

Other good pictures will be shown in connection with the serial

At the Saturday Matinee all children under 12 will be admitted free, over 12 years, 5 cents.

COME ON KIDS

The Strand

"WE AIM TO PLEASE"

DIAMOND QUALITY TESTED SEEDS

OUR 1916 CATALOG Founded on a Quarter Century of SQUARE DEALING

164 PAGES

A reliable Guide for Northwestern Growers

OUR 1916 Catalog and Planter's Guide is a valuable reference every grower should have. It is dependable. Farm, Garden and Flower seed and the best equipment for Poultrymen, Beekeepers and Orchardists. Ask For Catalog No. D 40

PORTLAND SEED CO. PORTLAND, OREGON