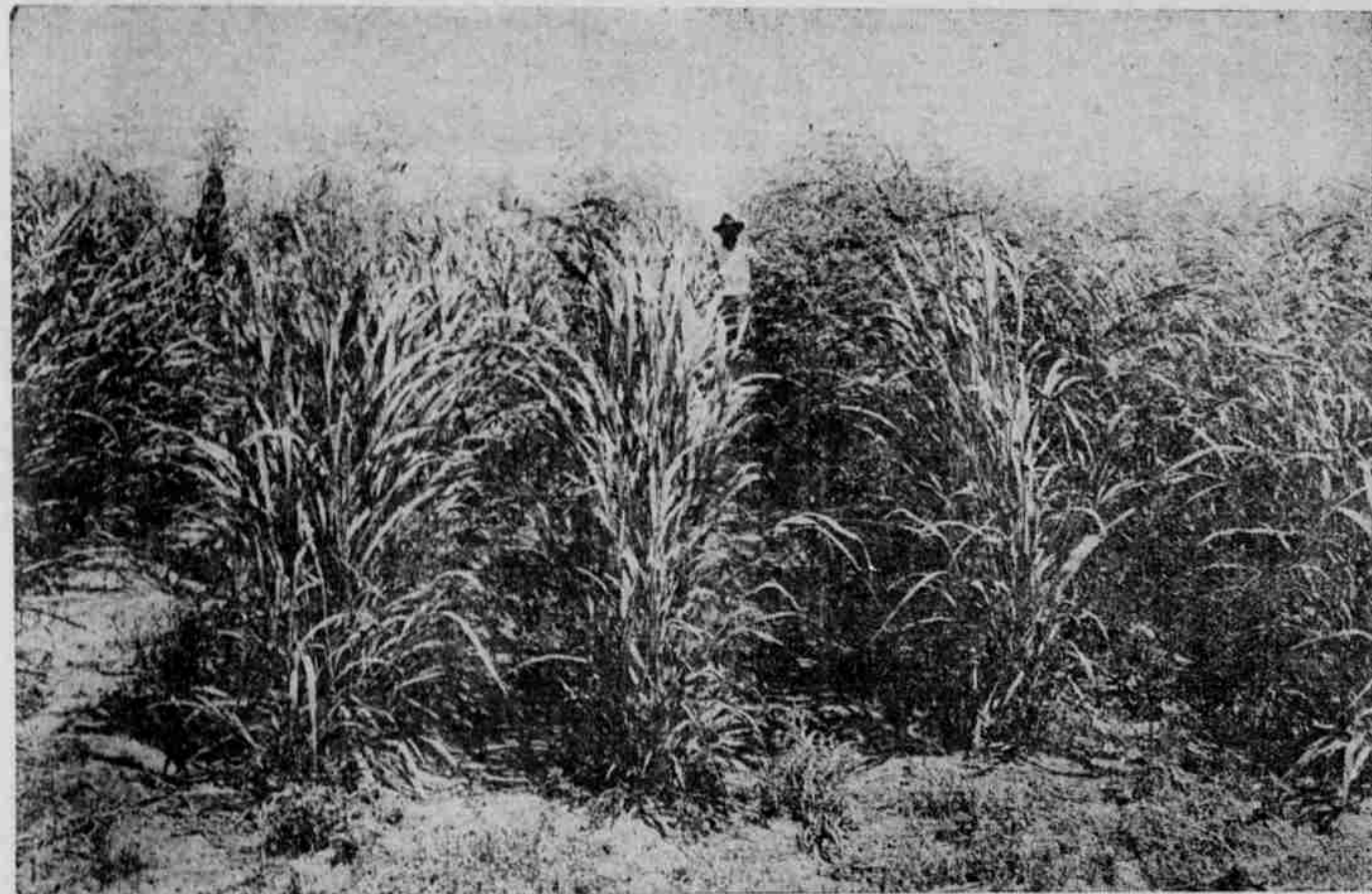
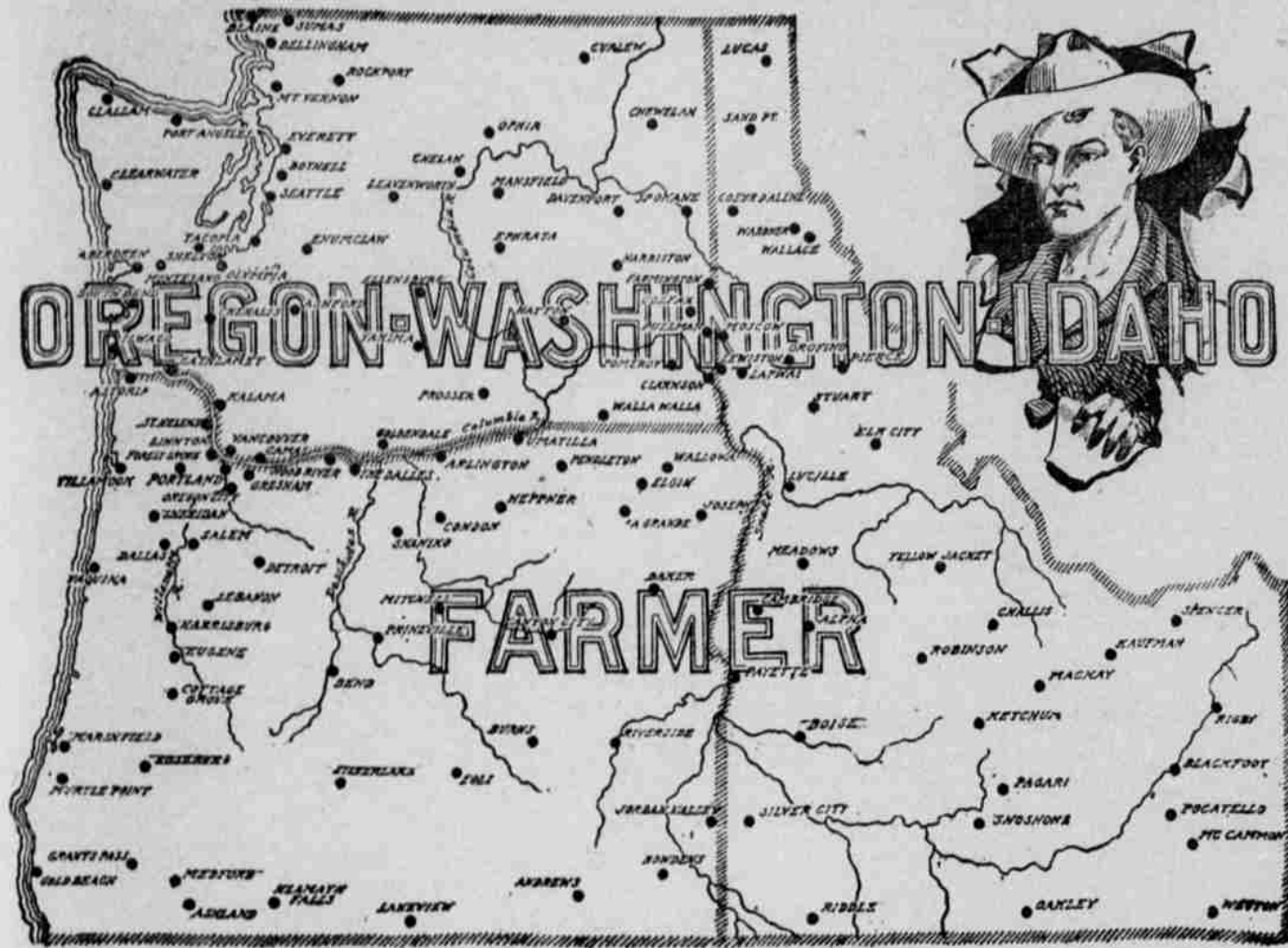


HOME AND FARM MAGAZINE SECTION

St. Helens Mist

ST. HELENS, OREGON

FRIDAY, MARCH 26



Field of Sudan Grass on 200-Acre Farm of E. J. Cowart, Lubbock County, Texas, Before Maturity. Note Dense Foliage of Plants Under Dry Farming Conditions in a Country Classed as Semi-Arid.