

IN BRIEF

Speaker uses innovative art in conservation message

Environmentalist John Seed will speak at the University tonight in a presentation sponsored by the Environmental Studies Program.

The presentation will feature various art forms and media in advancing the message of conservation and deep ecology.

Seed, founder of the Rainforest Information Centre in Lismore, Australia, will present in Willamette 100 from 7 to 8:30 p.m. There is a suggested donation of \$5.

— Gabe Bradley

Korean: Family has history of donating money and art

Continued from page 1
the community.

As a principal owner of the seventh-largest conglomerate in South Korea — GS Group — Huh has built business and social ties to the Eugene area since buying Farwest Steel in 1991. He also holds stocks in Western Coating, a coated-rebar manufacturing company based in Eugene.

In 2002, Huh's family, including his wife, Young Ja, gave a major gift to the art museum to build a wing for Korean art, which is now called the Huh Wing. The family also donated a 19th-century Korean eight-panel folding screen "Scholar's Accouterments" to the exhibit.

"They consider Eugene their second home," said Charles Lachman, the museum's curator of Asian art and associate professor at the Center for Asian and Pacific Studies. "They are interested in supporting and promoting Korean art in the community through the museum."

The Huh family has always been interested in education and art. Huh's father was principal of a Korean women's high school, while Young Ja is a daughter of one of the greatest Korean modern poets. The couple has bestowed money and art-work upon several educational and artistic institutions in Korea.

Museum Director David Turner said in a press release he hoped that continued growth of the museum's Korean collection and programs would provide visitors with an opportunity to deepen their understanding and appreciation for the unique art and culture of Korea.

The University's museum was founded in 1932 as the only campus museum in the nation primarily devoted to the arts of Asia. It reopened this January after a \$14.2 million renovation and expansion project, which included the Jin Joo Gallery and the Huh Wing.

The museum's collection of Korean art includes 380 items including paintings, ceramics, metalworks and textiles, ranging from the first century to contemporary. As an inaugural exhibition, the Korean art galleries have featured "True Views: Traditions of Korean Painting," highlighting ink-monochrome painting, decorative painting and folk art traditions.

Last year the Korea Foundation awarded a \$100,000 grant to the museum in recognition of its strong Korean art collection.

Farwest Steel's gift is a contribution to Campaign Oregon: Transforming Lives, the University's \$600 million fundraising initiative. The gift brought the total funds to the amount of \$357 million.

Grand Opening!

Friday, June 24

Valley River Center

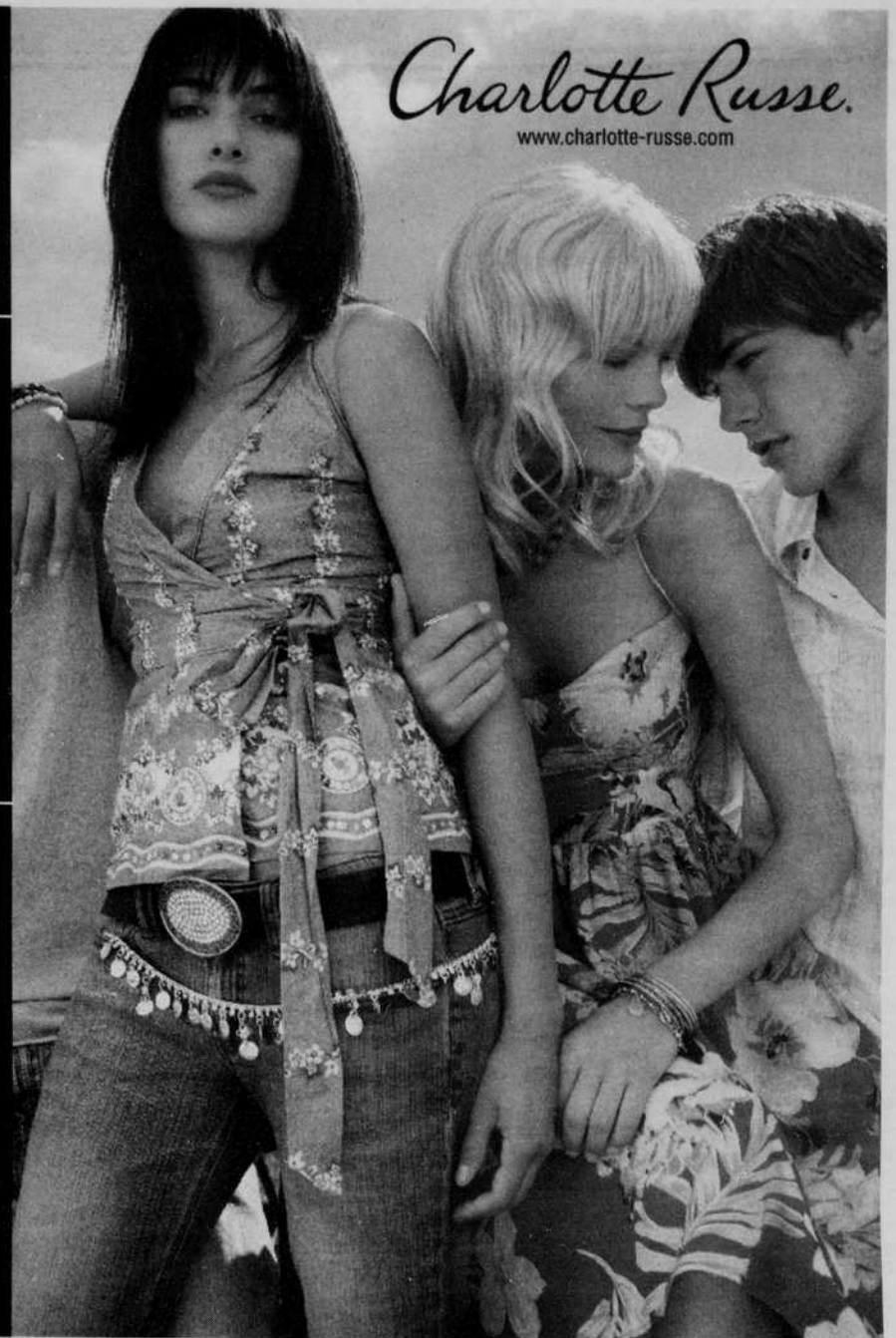
Mall hours

Mon-Sat

10 a.m.-9 p.m.

Sun 11 a.m.-6 p.m.

Charlotte Russe is located in between Hollister and Gap Kids



Charlotte Russe
www.charlotte-russe.com

Looking for a scholarship to support study or research abroad in 2006-2007?

A workshop for Sophomores, Juniors, Seniors and Graduate Students to discuss Selection Criteria and Application Procedures for Fulbright, DAAD, Boren/NSEP, Rotary Awards, Gilman, Freeman, & other Scholarships

International Scholarships Workshop

Wednesday, June 29
at 3:30 p.m.

Metolius & Owyhee Rooms, EMU

Sponsored by the Office of International Programs
Room 330 Oregon Hall



SUSHI STATION

199 E. 5th Ave • (541) 484-1334

Sushi on the conveyor

Variety of sushi, sashimi, and chef specials starting at \$1.50

- Lunch special:
- Tempura
- Udon
- Yakisoba
- Katsu
- Variety of sea food salad
- To go available
- and more
- Box
- Teriyaki



Lunch Mon-Fri 11:30 - 2:30
Dinner Mon-Sat 5:00-10:00
Sunday Closed

Now Leasing for next year!
University Commons Apartments

Furnished 1, 2, & 4 bedroom apartments

Call and ask about our Manager's Specials!



- Fully furnished
- Individual leases
- Full size washers and dryers in every apartment
- 24 Hour Fitness Center
- Heated pool
- Security alarm system
- Water, trash, sewer included

- On bus route
- Roommate matching
- 1, 2, & 4 bedroom apartments
- 3 bedroom with a den
- Game room
- Caged basketball court
- Sand volleyball court
- Uniformed security on-site

NO SECURITY DEPOSIT!



UNIVERSITY COMMONS apartments

338-4000

90 COMMONS DRIVE,
EUGENE, OR 97401
HOURS: M-F 9AM-6PM,
SAT 10AM-4PM
SUN 12PM-5PM