

# Oregon Daily Emerald

Music in Washburn Park Page 7

Thursday, August 5, 2004

SINCE 1900 UNIVERSITY OF OREGON EUGENE, OREGON

Volume 106, Issue 14

## Intersection improvement

*Construction inconveniences aside, the 'Heart of Campus' promises to be an addition 'we can all be proud of'*

OMIE DRAWHORN  
NEWS REPORTER

It's a mass of chewed concrete, noisy bulldozers and equipment, and a sprawling chain-linked fence spanning what used to be one of the busiest intersections on campus. Staff and students making their way around the dust and debris at the intersection of East 13th Avenue and University Street this summer are finding themselves forced to walk out of their way to get where they are going.

The University is building the 'Heart of Campus' at the intersection, which will include a redesigned kiosk, a seating wall in front of Friendly Hall that surrounds a garden setting, traffic turnarounds, and an expansion of the EMU visitor parking lot.

"We wanted to create a 'Heart of Campus' that goes with the EMU courtyard," said Rand Stamm, Department of Public Safety parking and transportation manager.

He said the goal in designing the 'Heart of Campus' is to create a gathering area for campus.

Chris Ramey, Director and Architect for University Planning, said doing the construction during the summer should decrease the disruption to students, because fewer people are on campus.

But, the construction is taking its toll on those who are on campus.

Stamm said during construction there is no parking on East 13th Avenue and to walk past the EMU, students and staff are having to find alternate routes, even walking all the way around the EMU.

French major Leia Pedro said she was trying to deliver something for her job at the Yamada Language Center, but the trip took much longer than usual.

"It's not that big of a deal," she said, adding that the detour was slightly frustrating.

Please see **DETOUR**, page 6



Erik R. Bishoff Online & Photo Editor

In preparation for construction on the new 'Heart of Campus' project, traffic has been blocked as crews work at the intersection of East 13th Avenue and University Street.

## GTFF mediation with University tackles contracts

*The GTFF may choose to strike if the University fails to meet negotiations concerning appointments, salaries and fees*

BEN BROWN  
NEWS REPORTER

In a final show of solidarity before it enters mediation, the Graduate Teaching Fellows Federation held "Empty Campus Day" on Wednesday, asking all students, faculty and graduate teaching fellows to avoid campus for the day.

Today's state-sponsored mediation is an 11th-hour effort to close contract negotiations between the union and the University that have lasted more than nine months.

Fifty of the 115 classes taught by GTFFs were held off campus Wednesday. Most classes were held at Koinonia Center on the corner of Kincaid Street and East 14th Avenue or in local parks.

GTFF President Eric Lindgren said he was pleased with the



Eric Lindgren  
GTFF president

Please see **GTFF**, page 5

## Police arrest accused burglar

*Billy Jess Barnard is accused of stealing merchandise and equipment from Autzen*

JARED PABEN  
EDITOR IN CHIEF

Eugene police arrested a 19-year-old man accused of stealing more than \$37,000 worth of University and University of Oregon Bookstore property — including \$15,000 worth of Joey Harrington memorabilia — in a string of burglaries at Autzen Stadium this year.

Police arrested Billy Jess Barnard after forensic evidence

Please see **BURGLAR**, page 4

## Outdoor tennis courts demolished to make room for LLC

*The Living Learning Center moves in, and a new outdoor tennis facility could be completed for the 2006 season*

ALEX TAM  
SPORTS EDITOR

University Housing's plan to build the first new residence hall on campus in nearly 40 years has at least one immediate consequence — the removal of the tennis courts on East 15th Avenue.

The Living Learning Center replaces the six outdoor tennis courts on East 15th Avenue that were used by the University men's and women's tennis teams for outdoor matches during the spring season.

Associate Athletic Director Steve McBride said there are plans to build a new outdoor tennis facility on campus, but the site has yet to be determined.

"This is good for the tennis team and tennis facilities on campus," McBride said. "But we want to have time to seek a new site for the courts."

Possible locations for the outdoor tennis facility include a site on East 18th Avenue between Hayward Field and Howe Field, which is currently the venue for the University softball team, and on East 15th

### PART 2 OF 4

**Yesterday:** University Housing prepares to break ground on LLC

**Today:** University removes outdoor tennis courts to make room for LLC

**August 10:** Living Learning Center to increase need for parking

**August 12:** Feedback about LLC's combined academics and living

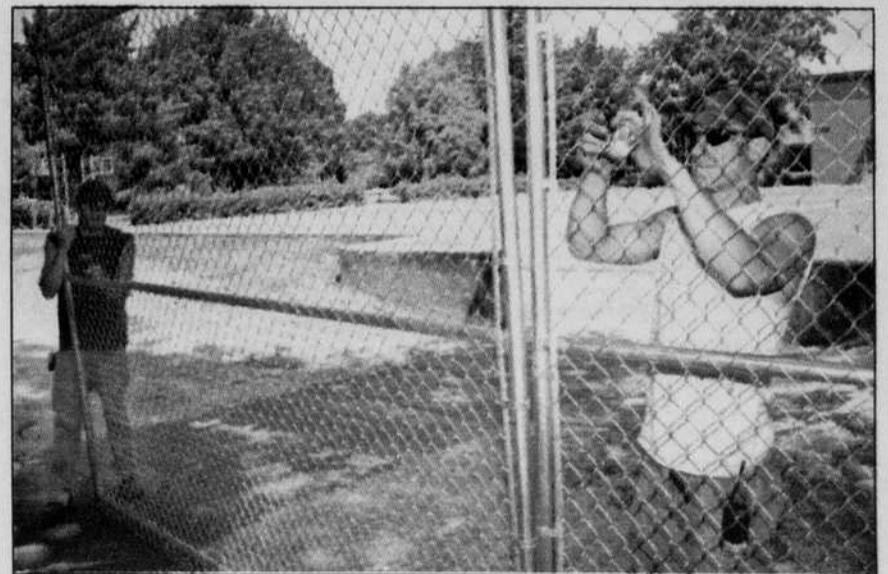
Avenue by the Bean Complex and outdoor basketball courts, McBride said.

He said the athletic program wants definite plans for the new tennis courts by the end of this year, and would like to see construction complete by fall of 2005 — in time for the spring 2006 tennis season.

Funding for the new tennis court will be provided by University Housing, McBride said.

"Our goal is to complete construction 14 months from now," McBride said. "It won't be a huge construction project." However, a Pacific-10 Conference rule requires varsity tennis teams to play as many matches as possible on outdoor courts. With construction of the LLC already underway and no other outdoor tennis facility on campus, the University's athletic program requested an exemption to the

Please see **LLC**, page 4



Erik R. Bishoff Online & Photo Editor

Island Fence Inc. employees Fox Wanaisie (right) and Kris Banton set up cyclone fencing around the tennis courts on East 15th Avenue Monday afternoon in preparation for breaking ground on the new Living Learning Center.