

Today's crossword solution

S	C	A	T	A	P	H	I	S	R	E	D	O
C	L	U	E	C	L	O	M	P	E	V	E	N
R	A	R	E	T	A	M	P	A	R	I	L	L
O	R	A	T	E	T	E	A	R	F	U	L	L
D	E	S	E	R	V	E	I	R	O	N		
	R	A	I	N	D	R	O	P	F	I	B	
U	N	W	I	S	E	Y	E	W	C	O	D	A
C	A	I	N	E	C	A	D	D	O	N	O	R
L	I	N	G	R	A	D	M	A	N	T	L	E
A	L	E	H	E	S	S	I	A	N	S		
	G	A	P	E	N	E	C	T	A	R	S	
S	W	A	L	L	O	W	E	D	E	R	R	O
T	A	X	I	R	O	L	E	S	U	G	L	I
A	C	I	D	T	R	I	N	E	C	U	L	T
R	O	S	E	S	K	A	T	E	T	E	S	S

McKENZIE RIVER GOLF COURSE

We invite you to play our beautiful golf course along the scenic McKenzie River, with immaculate greens and a mature, manicured landscape.

Located off Deerhorn Road Hwy. 126 to Holden Creek, cross bridge to Golf Course.

See why we are the jewel on the river. 41723 Madrone

Weekdays Mon-Fri
\$10 - 9 holes
\$17 - 18 holes
with UO ID



896-3454



FUNDS

continued from page 1

While the bulk of the funding — about 90 percent — came from federal sources like the Department of Health and Human Services and the Department of Education, the University also received awards and grants from corporations, the state and private donors.

Associate Professor of biology Karen Guillemain received a three-year grant worth \$600,000 from the American Cancer Society. Her research focuses on Helicobacter pylori, a bacterium that lives in the stomachs of over half the world's population and is believed to cause stomach cancer in certain cases.

"We are trying to understand how particular strains of the bacterium cause cellular change that leads to can-

cer," Guillemain said. She is working actively with three graduate students.

Linton said that there are several reasons for the increased amounts of money for research. One factor is that

"Our faculty are increasingly competitive and successful ... and that's a tribute to the quality and energy of our faculty."

Richard Linton
University vice president
for Research and Graduate Studies

different federal departments have increased their funding for academic research and development. Another

reason is the University faculty's commitment to seeking out financing for their projects.

"Our faculty are increasingly competitive and successful — and it is competitive — and that's a tribute to the quality and energy of our faculty," Linton said, adding that even new faculty have been successful in their quest to bring more funds into the University's coffers.

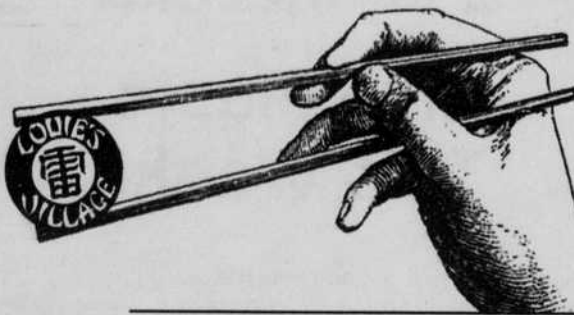
Linton said the grants from different sources were especially critical for research.

"The state is really not investing significantly in research," Linton said. "The only way that it's going to flourish and succeed is through our individual faculty efforts."

Contact the news editor at ayishayhya@dailymerald.com.

LOUIE'S VILLAGE

Restaurant and Lounge
Authentic Chinese Cuisine
Fresh, Quality Ingredients



947 Franklin Blvd. (near UO) • 343-4480

Individual, Family Style, Banquets to 100, Take Out

Tues.-Thurs. 11-10:30, Fri. 11-11

Sat. 12-11, Sun. 11:30-10

COURTHOUSE

continued from page 1

of the stairs. Advocates for disabled access have adamantly pressed for the inclusion of a disabled access ramp, which the GSA has not yet included

in the courthouse's design.

James Dean, chair of the Human Rights Commission, said the new courthouse needed a ramp to improve accessibility for everyone in Eugene. He said Eugene is seen as a national leader in disability access and should show that with its new courthouse.

"If you have this grandiose federal building and the main access is just the stairs, then you are showing people that you are denying many disabled people access to the courthouse," Dean said. He said he felt that there was no local input on the design of the courthouse.

"Part of the problem is that the federal government is not listening to the people," Dean said.

Dean emphasized that though many community members had concerns about disability access to

the courthouse, people still supported the construction of the building.

"None of these people are saying that we don't want a courthouse," Dean said. "We just want the courthouse to appear accessible for all."

Gray said the GSA was aware of the disabled access issue and is currently in the middle of a 45-day review to explore the idea of adding a ramp. He said the agency would determine the possibility of a ramp by October 15.

"It seemed more practical to use an elevator at the time," Gray said. "But the community wants a ramp so we are looking into it."

City officials say they still believe the courthouse will be constructed once the city comes to a resolution with the GSA.

Contact the city/state politics reporter at shoikeda@dailymerald.com.

RUMBANANA
dance group presents...

Salsa Rueda Workshop

October 5, 2003
1-5 p.m.

In Shape Dance Studio
(2681 Willamette St.)

Cost is just \$5

More info -

www.rumbanana.org

Come learn this fun style of Salsa!

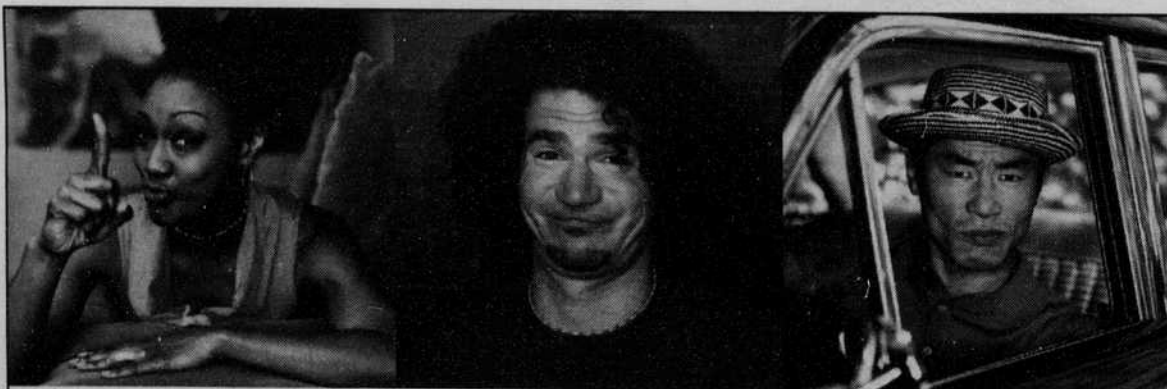
CAMPUS BUZZ

Thursday

West University Neighborhood Association meeting, 7:00 p.m., Central Presbyterian Church at 555 E. 15th St., Room 106. Topics will include recommendations for updates on alleys, and incentives to encourage new housing. Those

attending will also be able to meet the new West University Neighborhood foot patrol officer and nominate people for WUNA board positions.

The Soul On Campus kickoff barbecue, 6:00 p.m.-7:30 p.m., EMU East Lawn.



REJECT FAKE FREE CHECKING

TRULY FREE CHECKING

Tell your bank the jig is up. You're done with fake free checking's monthly fees and you're ready for Washington Mutual's truly Free Checking account. Truly free, with no monthly fee no matter what your balance, no direct deposit requirement and no charge to talk to a teller. Reject fakery. Go to any Washington Mutual Financial Center or call 1-800-788-7000 and switch to truly Free Checking today.

NO FEE TO TALK TO A TELLER OR TELEPHONE BANKER

NO MONTHLY FEE NO MATTER WHAT YOUR BALANCE

NO DIRECT DEPOSIT REQUIREMENT

NO PER-CHECK CHARGES

VISA® CHECK CARD WITH NO ANNUAL FEE

Washington Mutual

MORE HUMAN INTEREST.™

wamu.com

FDIC Insured

Sorority Recruitment



October 3rd - 8th

Orientation begins October 3rd at 5pm in Columbia 150.

Fraternity Recruitment

October 3rd - 8th

Recruitment begins at Splash Waterpark Transportation provided, meet Oct 3rd, 9pm, at the Greek Life Office.



Be a part of the largest student group on campus.



Get Involved!

Friendship - Leadership

Scholarship - Community Service

For info and to register go to: <http://greeklife.uoregon.edu>

OREGON DAILY EMERALD

A campus tradition--over 100 years of publication.