

# VON KLEIN PROPERTY MANAGEMENT, LLC

## CAMPUS RENTALS

Largest Selection - Personal Service

★ Summer Rates ★  
★ Fall Reservations ★

<b>Campus Chateau</b> 1668 Ferry	<b>Selma Apartments</b> 361 E. 14th
<b>Campus Twins</b> 735 E. 14th	944-946 E. 19th
<b>Ferry Street Quads</b> 1728 Ferry	1340 Mill
<b>Fir Crest</b> 630 E. 14 <sup>TH</sup>	1365 Ferry
<b>Holly Court</b> 1930 Onyx	531 E. 14th
<b>Lake Crest</b> 1390 Mill	1881-1891 High
<b>Maple Arms</b> 1345 Ferry	315-365 E. 19th
<b>Patterson Manor</b> 611 E. 11 <sup>TH</sup> 1085 Patterson	1911 Kincaid
	354 E. 14th
	1550-1556 Mill St.
	1647 Mill

FOR THESE LISTINGS,  
CALL 485-7776

<b>Alderwood Manor</b> 1884-1860 Alder 686-0743	<b>Garden Terrace</b> 1893 Garden Ave. 302-5713
<b>Blackstone Manor</b> 1750 Alder 687-0684	<b>Hideaway</b> 710 E. 15th Alley 715 E. 16th 683-9546
<b>Campus Plaza</b> 750 E. 18 <sup>TH</sup> 485-7208	<b>Talisman</b> 888 E. 18 <sup>TH</sup> 485-7208
<b>College Side</b> 737 E. 16 <sup>TH</sup> 683-9546	<b>University Manor</b> 745 E. 15 <sup>TH</sup> 485-9773
<b>Flintridge</b> 500 E. 18 <sup>TH</sup> 485-0060	1884 Garden Ave. 1210 Villard 302-5713

VON KLEIN PROPERTY MANAGEMENT, LLC.

485-7776 • 1301 FERRY



Photo illustration by Danielle Hickey Emerald

Finding a likable roommate can be difficult when moving to a new place. Being up front about expectations may ensure a less-conflicted atmosphere. Roommates should also be open to communication.

## Mediation can solve roommate conflicts

Students share insights about solving problems with roommates whose personalities and lifestyles clash

**Allyson Goldstein**  
Freelance Reporter

For most students, getting to know a new roommate is an exciting experience. But for others, it signifies the beginning of a yearlong nightmare.

No matter how hard they try to get along, some people just cannot live together. Whether conflicts arise from scheduling, music choice or cleanliness, some roommates will simply drive each other crazy.

Freshman Danielle Kellar experienced firsthand the difficulties of having a roommate she could not get along with. She recalls her

roommate was more of a parent figure.

"She told me when to clean my half of the room and when to go to bed," Kellar said. She added most of their conflicts resulted from scheduling difficulties.

"My roommate was a member of the crew team, and so she went to bed every night at 7:30 and woke up at 4," Kellar said. "She wouldn't let me be in the room while she was sleeping, either."

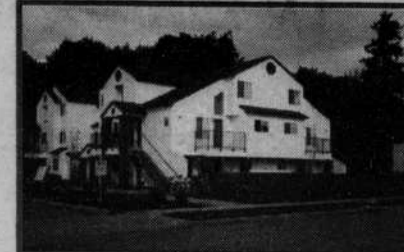
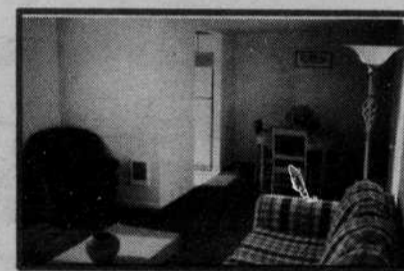
According to Julia Hill, a resident assistant in Hawthorne Hall, problems between roommates occur when one roommate has unreasonable expectations of the other. She said communication and compromise can help to alleviate these issues, as long as each roommate is willing to empathize with the other

Turn to **Roommate**, page 10B

## We've Got A Space For You!

We combine the convenience of University living with the kind of independence you can only find in an off campus setting.

- 1, 2, 3 & 4 Bedroom Furnished Units
- No Application or Credit Check Fees
- Leased by the Bedroom
- Large Swimming Pool and Year-Round Spa
- State-of-the-Art Fitness Center
- Recreation Room
- Volleyball and Basketball Courts
- Barbecue Grills
- Computer Lab with FREE Internet Access
- Minutes by Bike Across the Autzen Footbridge
- Bus Stop at Kinsrow and Centennial
- www.ducksvillage.com
- Free roommating service



**Ducks Village**  
Come Live With Us!

3225 Kinsrow Avenue, Eugene, OR • 485-7200  
Office Hours Monday - Friday 8-5 Saturday 9-1