

Seat 16

continued from page 5

pay for college, keeping the fees as low as possible, and increasing financial aid and making the financial aid office as responsive as possible. Another issue that I hope to be able to tackle next year is the lack of night classes.

Junior Gabrielle Guidero is majoring in geological sciences and is a member of the College Republicans. Speaking on Section 5, she said it was important that senators fulfill their duties and be there for students who have elected them.

Q: How will you figure out how to spend the surplus?

Guidero: I'd like to see it evenly dispersed over a variety of activities, to things that will impact a lot of different groups, not just one or two. I

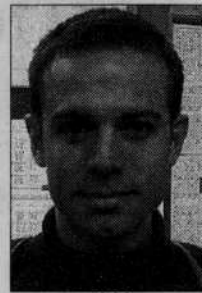
don't know, I see that things are covered the way they should be covered in a University. I'd like to see a real variety of speakers brought in. I really like speakers.

Q: How will you interact with student groups?

Guidero: Thoroughly and evenly.

Q: What are the most important issues facing the students you would represent as a senator?

Guidero: Well, since I'm the science senator, I am not sure what all the issues are yet. (I would) bring some attention to the science department — I'm a little outspoken, I



Griffes

am sure I can find some ways. I really want to get involved and talk to people and find out what the issues are. I've actually been talking to a lot of my fellow students and teachers. I

need to branch out. I started in the geology department, of course, because that's where I am every day.

Junior Jonah Lee is majoring in exercise and movement science and biology. He is a member of Sigma Alpha Epsilon, the Interfraternity Council President and the leadership division chair of the Community Internship Program. Lee was uncertain about which was the most



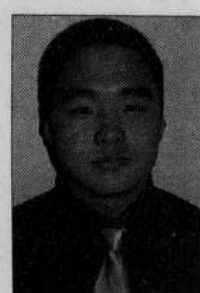
Guidero

important duty in Section 5, but he said it was important to have rules because they enable senators to be accountable for their actions.

Q: How will you figure out how to spend the surplus?

Lee: By working with the other senators and getting an idea of the interworkings of budget and things like that. I think the best thing to do is educate myself and educate other people as far as what is the need and what is the benefit.

Q: How will you interact with student groups on campus?



Lee

Lee: Well, if you know anybody on campus who knows me, I'm a fairly social person, and the actions that I take (are) based on relationships and I stem the leadership off of those relationships.

Q: What are the most important issues facing the students you would represent as a senator?

Lee: Lots of changes have been taking place since I've been here freshman year, everything down from the population of student body to budget. I think the change of UO is consistent and it's constant and moving in a direction, and I think that trying to figure out what that direction is a big thing for people to understand for where they want their community to go.

Kira Park is a freelance writer for the Emerald. Freelance editor Ayisha Yahya contributed to this report.

Measures

continued from page 5

Minor changes

•2.4: Changes the word "handicap" to "disabled." Voting yes would allow disabled students to receive the same protected access to student fee-funded activities as handicapped students. Voting no would keep the wording untouched.

•4.1: Increases credit requirements for students paid for ASUO-related positions. Voting yes would require students paid for ASUO-related work to enroll for at least eight credits per term, which complies with guidelines set forth by the Human Resources and University Payroll. Voting no would keep the minimum credit requirement at half-time, which usually means six credit hours.

•4.6: Prohibits ASUO elected officials from voting on budgets that could line their pockets in the future. Voting yes would modify the conflict of interest provision. Right now, it says elected officials can't vote on ASUO or EMU program budgets in which they hold a paid position; the new clause would instead stop elected officials from voting on a budget in which they will hold a paid position during the fiscal year the budget is in effect. Voting no would keep the old clause intact.

•5.7: Defines in excruciating detail what "accounting of expenditures" is and who's responsible for it. Voting yes would explain the

ASUO president's duty of submitting an accounting of expenditures of all ASUO programs from the previous fiscal year as "Postclose" and define who produces the document. Voting no would leave the phrase "accounting of expenditures" undefined.

•5.13: Clarifies that paid ASUO Executive positions are subject to the ASUO Stipend Model. Voting yes would add the phrase "in accordance with the ASUO Stipend Model," a model approved by the senate in May 2000. Voting no would keep the old section intact with no changes.

•5.17: Clarifies the majority of senate needed to impeach the ASUO president. Voting yes would require that three-fourths of the seated senate vote for impeachment of the ASUO president; currently, the word "seated" is not used, which could create confusion if there were any unfilled senate seats or if there were any senators absent from a meeting where an impeachment vote was taken. Voting no would keep the old language in place.

•12.3: Removes archaic language from the Green Tape Notebook. Voting yes would strike 12.3 entirely. The section refers to a timeline that has been obsolete for eight years. Voting no would keep the section intact.

•12.4: Clarifies that only incidental fee-paying students can vote in ASUO elections. Voting yes would ensure that only students that pay incidental fees earn the right to vote. Voting no would not

establish criteria for voting in the ASUO elections.

•12.5: Removes archaic language from the Green Tape Notebook. Voting yes would strike 12.5 entirely. The section refers to a timeline that has been obsolete for six years. Voting no would keep the section intact.

Date changes

The first four of these date-changing ballot measures have been proposed in order to give student government enough time to determine proper budgets before submitting the proposals to the University president on April 1 and to the Oregon University System by May 1.

•5.8: Moves the deadline for an incidental fee budget timeline from Jan. 15 to the end of fall term. Voting yes would require the ASUO president and senate to agree to a timeline for the incidental fee budget by the end of fall term. Voting no would maintain the Jan. 15 deadline.

•6.22: Moves the deadline for establishing and publishing a budget process schedule from Jan. 15 to the end of fall term. Voting yes would move up the budget scheduling process undertaken by the student senate, in conjunction with the ASUO president, PFC, ADFC and EMU Board. Voting no would maintain the Jan. 15 deadline.

•7.4: Moves the PFC requirement to establish and publish its own rules from Nov. 1 to Oct. 25. Voting yes would move up the PFC rule publication one week. Voting no would

maintain the Nov. 1 deadline.

•7.6: Moves the PFC's duty of assigning a "tag" to each ASUO program from Oct. 15 to Oct. 10. Voting yes would move up the PFC tag assignment five days. Voting no would maintain the Oct. 15 deadline.

•12.5: Requires the ASUO president to appoint an elections board

chairman or chairwoman by Nov. 1. Currently the deadline is Feb. 15. Voting yes would give the board more time to establish elections rules and form a hearings committee in case of student complaints. Voting no would maintain the Feb. 15 deadline.

Contact the news editor at brookreinhard@dailyemerald.com.

Premier Travel

- Airfare Specials!!!
- Orlando - \$198.00*
- New Orleans - \$198.00*
- Providence - \$198.00*
- Cancun - \$388.00*

*tax not included, restrictions may apply. Subject to change without notice.

Eurail Passes issued on-site!!!
E-mail: fares@luv2travel.com

1011 Harlow
747-0909
Student Travel Experts

MIDDLEFIELD GOLF COURSE **OAKWAY GOLF COURSE**

942-8730 484-1927

STUDENT SPECIAL
GOLF 9 HOLES \$10

Students Only. Must show ID. (Monday - Friday)

Save money!
Use your Duck Bucks™

Money-saving coupons published in the Emerald every term!

Oregon Daily Emerald

SPRING WORKSHOPS

CRAFT CENTER

SPACE AVAILABLE IN THESE CLASSES REGISTER TODAY!

| | |
|---|--------------------------------------|
| Ceramic Sculpture Tuesday, April 8-May 13 Term Pass Required | 6:30-9:30pm \$62.00 |
| Accordion Fold Books Saturday, April 12-May 3 \$44 w/term pass | 1:30-4:30pm \$49 w/out term pass |
| Acrylic Painting Sunday, April 13-May 11 \$56 w/term pass | 5:00-8:00pm \$61 w/out term pass |
| Drawing Monday, April 14-May 19 \$45 w/term pass | 6:00-8:30pm \$50 w/out term pass |
| Figure Studies Wednesday, April 16-May 28 \$65 w/term pass | 6:30-9:30pm \$70 w/out term pass |
| Photolift Saturday, April 19 \$25 w/term pass | 10:30-1:30pm \$30 w/out term pass |
| Basketry Tuesday, April 22-May 13 \$44 w/term pass | 6:30-9:30pm \$49 w/out term pass |
| Silkscreen Tuesday, April 22-May 27 Term Pass Required | 6:30-9:30pm \$64.00 |
| Hard Bound Album Wednesday, April 23 & 30 \$30 w/term pass | 3:00-6:00pm \$35 w/out term pass |
| Relief Sculpture Thursday, April 24-May 15 \$40 w/term pass | 6:30-9:30pm \$45 w/out term pass |
| Re-Threads Sunday, April 27 \$10 w/term pass | 12:30-2:30pm \$15 w/out term pass |
| Alternative Processes Sunday, April 27-May 11 Term Pass Required | 12:00-4:00pm \$49.00 |
| Repousse & Chasing Metal Monday, Apr 28-May 19 Term Pass Required | 6:30-9:30pm \$40.00 |
| Printing & Handcoloring B&W Photos Wednesday, Apr 30-May 14 Term Pass Required | 6:00-9:00pm \$36.00 |
| Spinning Wednesday, April 30-May 14 \$30 w/term pass | 6:00-8:30pm \$35 w/out term pass |
| Fly Tying Wednesday, May 7-May 28 \$37 w/term pass | 6:30-9:00pm \$42 w/out term pass |
| Image Transfers Sunday, May 11 \$25 w/term pass | 12:30-4:30pm \$30 w/out term pass |

for information call 346-4361
www.craftcenter.uoregon.edu