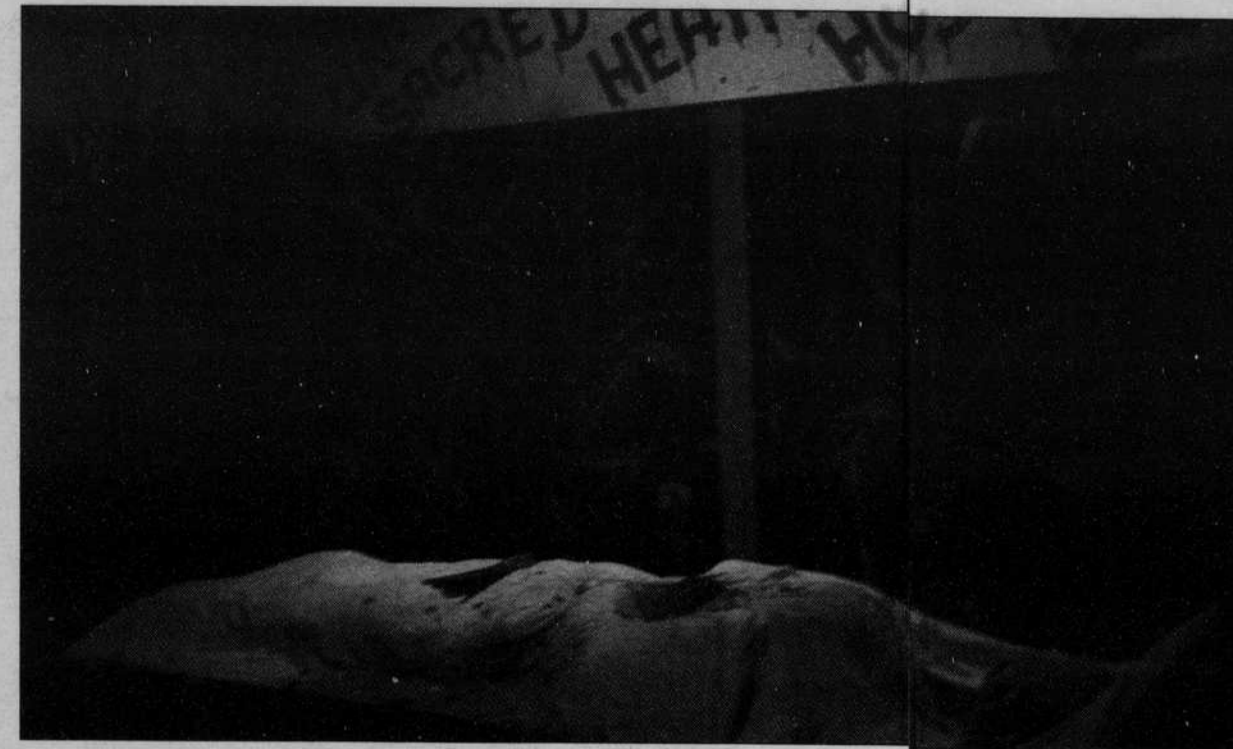


Hell hath no fury like a maize



Photos by Mark McCambridge Emerald
A meander through the corn maze at Lone Pine Farms unveils a bewitched world of creepy things, of ghouls and chainsaw hacks and skeletons that swing.

Interested in Law School?

Attend the:

Portland Law School Fair

November 12, 2002, from 10am-2pm-free admission
PSU Ballroom
3rd Floor SMC (1825 SW Broadway, Portland)

Questions? Call: 503-725-3917 or visit
<http://www.prelawsociety.pdx.edu/>



Class starts soon!

November 4

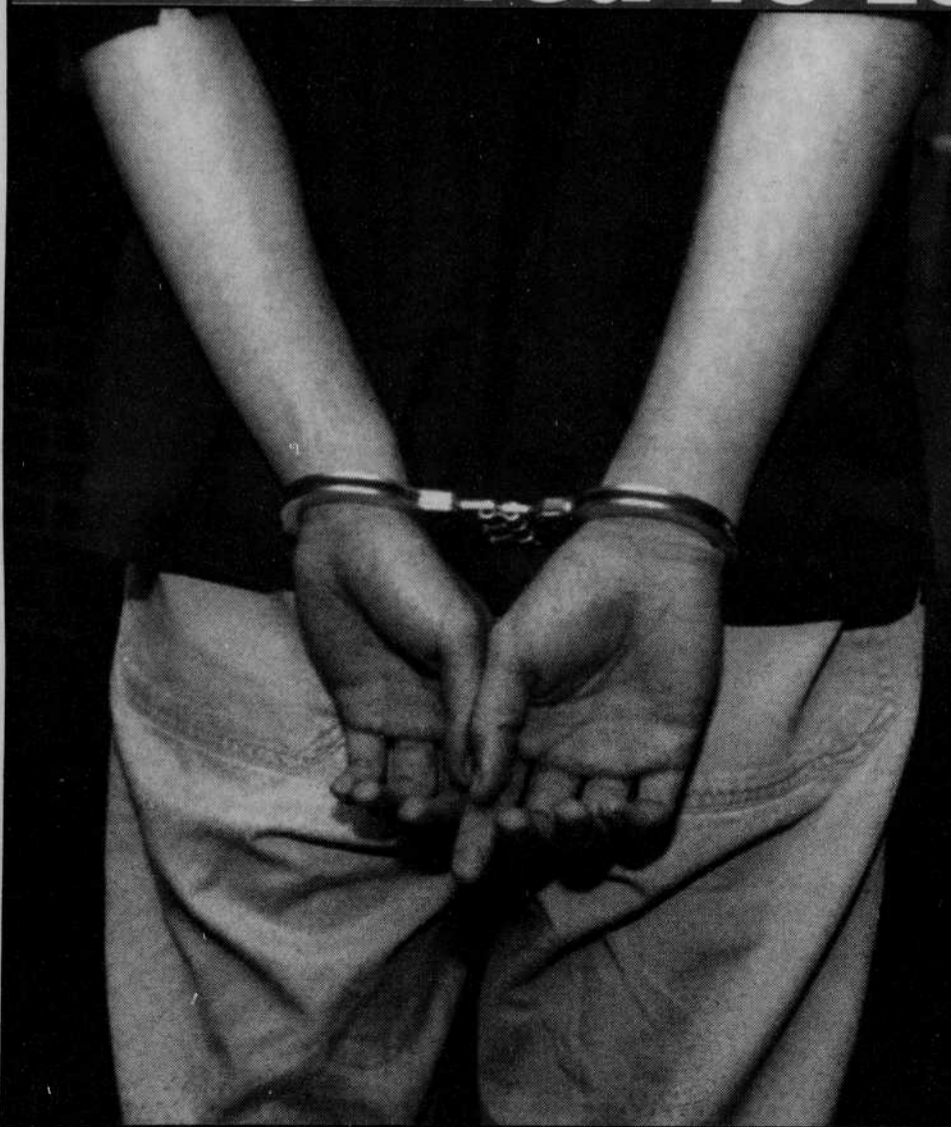
Eugene Kaplan Center
720 E 13th Ave, Suite 204

Kaplan's top-rated GMAT course combines the best of classroom instruction with newly added online practice and review.

Call us at 1-800-KAP-TEST or visit us online at kaptest.com today to enroll!



What Does It Mean If The Police Tell You To Leave An Area?



When a police officer issues a "Notice to Disperse" or asks people to clear an area, it is important that everyone realizes that this is a directive issued by law enforcement personnel in the performance of their duties in an emergency situation. This supercedes rights individuals usually have to peacefully assemble or observe a situation.

So, if a police officer asks you to leave an area, remember the following:

1. You must leave right away. Failure to leave could result in your being cited or arrested for interfering with a police officer. This is a Class A misdemeanor punishable by jail time and up to a five thousand dollar fine.
2. Once the police have given an order to leave, you must leave.
3. While you may consider yourself an innocent bystander, your presence alone contributes to the crowd that police are ordering to disperse.
4. It is never a good idea to join a large crowd (even as an observer) that is gathering in the streets. While you may be curious to see what is going on, you are contributing to the problem if you remain in the area.
5. In large public disturbances, you should leave so that you aren't interfering with a police officer, and you should leave for your own safety. Bricks and bottles that are thrown in these types of situations have seriously injured people.
6. If the police ask you to step back into your residence or off a porch or balcony you should do so. Remember, dispersal orders given during an emergency situation supercede rights individuals usually have to peacefully assemble or observe a situation.

Brought to you by: Office of Student Life, ASUO, and Eugene Police Department

How To Throw A Responsible Party

Information for Students Hosting Parties: The ASUO, Eugene Police Department, and University of Oregon Office of Student Life have developed these ten steps to help you have a successful party in campus neighborhoods.

1. Invite your friends. Make sure you control the guest invitations so you don't find yourself with 300 people showing up, saying they have been invited by someone who was invited by someone you invited. Don't put up fliers, posters, etc. about your party. A moderate-sized party is one at which you can have fun. A party that grows out of control is one where you will spend all your time dealing with problems instead of socializing and having a good time yourself.
2. Keep the planned size of your party in line with the size and capacity of your facility, including bathroom facilities. Remember that your party cannot use your neighbors' yards or city streets.
3. Find ways to celebrate that do not involve alcohol. If you choose to serve alcohol, ensure that you are only serving to people 21 years of age or older.
4. Determine who will be the party's designated non-drinking monitor; those persons can do a lot to keep things under control and should be the ones to interact with the police if they get called to your party (see 7, 9, and 10).
5. Remember that if you host a party that gets out of control, you may be legally liable for criminal and civil action or restitution for police and other city services.
6. Remember that if you host a party, you are legally liable if persons under 21 drink alcohol or if someone drinks until they are intoxicated.
7. Control access to your party. Have a door monitor with specific instructions about whom to admit. Don't let random people into your house who are walking around looking for a party.
8. Notify your neighbors of your party plans. Let them know what you plan in terms of size, hours, music, etc. Tell them they can contact you if they have problems created by your party.
9. There are several circumstances that will draw police attention to your party:
 - loud noise.
 - admitting people under 21 years old.
 - letting people carry beverages outside from your party.
10. Be cooperative with neighbors, police, or other concerned persons who come to you during the party to discuss a problem. Being cooperative will keep the problem from escalating to a higher-level response (e.g., your arrest!).
11. Your neighbors may be more tolerant of your next party if you clean up promptly after your party. Clean up all debris your guests have carried outside and left in your yard, in other people's yards, or in the street.

