

# Oregon Coast has nature, shopping

ONLINE EDITOR

**Marilyn Rice**

The curves of Highway 101 wind against rugged cliffs and present a dazzling showcase of spectacular Pacific Ocean views only a one-hour drive from Eugene. Now is a perfect time to take this day trip or weekend getaway.

To reach the city of Florence from Eugene, take Highway 126 west until it intersects with Highway 101. For thrill seekers, **South Jetty**, a mile south of the city, is the perfect location to speed through the sand dunes on dune buggies, wind surf or use the only two underwater dive parks in the state at **North Jetty** and **Woahink Lake**.

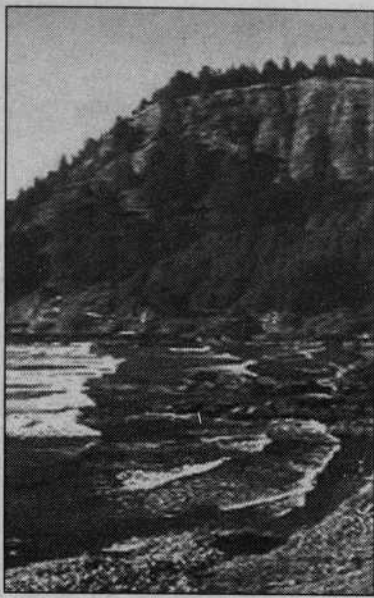
Old Town, on the bay front, has plenty of specialty shops and places to eat with clam chowder as the most popular request.

Oregon's busiest state park campground, **Jessie Honeyman State Park**, is open year round, but during the summer months it is recommended that campers make reservations. For history enthusiasts, **Siuslaw Pioneer Museum** displays Indian and pioneer artifacts.

Twenty-five miles north of Florence is the town of Yachats. The Indian name means "dark water at the foot of the mountain." One of the most enjoyable attractions is the **Sea Lion Caves**. An elevator built inside the cave takes visitors deep into the cave to view the wild sea lions that live there. Three miles south of Yachats is the highest point on the Oregon Coast, **Cape Perpetua**. Visitors can go to the visitors center and get information about the area and its numerous hiking trails.

The city of Newport is 25 miles north of Yachats. In this busy resort area is the **Oregon Coast Aquarium**, **Hatfield Marine Science Center**, two working lighthouses, **Yaquina Head** and **Yaquina Bay**, two working fishing canneries at the **Historic Bay Front** area, **Nye Beach** and six easy-to-find beach accesses.

"Newport is a great community



Courtesy photo

for locals and visitors year-round. The main tourism season is June to October, but throughout the rest of the year it is great for a family weekend or romantic getaway," said T.C. Caldwell, tourism development director for the Newport Chamber of Commerce.

If gambling, waterfalls, shopping, hiking or beachcombing is of interest, travel 25 miles north from Newport to Lincoln City. The **Chinook Winds Casino** provides great views of the ocean, headliner entertainment as well as gambling for its guests. **Drift Creek Falls**, the newest trail in the city, leads hikers to a 150-foot suspension bridge beside a 100-foot waterfall. Also, the city has seven-and-a-half miles of accessible beach front. Other attractions are: numerous antique stores, a factory outlet mall, **Roads End State Park** and **Siletz Bay**, where a herd of harbor seals lounges on a sand bar.

For longer trips, travel north of Lincoln City, where numerous beaches are waiting exploration off of Highway 101. For more information, visit [www.visittheoregoncoast.com](http://www.visittheoregoncoast.com), [www.coastvisitor.com](http://www.coastvisitor.com), [www.us-101.com](http://www.us-101.com) or call the Central Oregon Coast Association at (800) 767-2064.

Contact the online editor at [marilynrice@dailymerald.com](mailto:marilynrice@dailymerald.com). Her opinions do not necessarily represent those of the Emerald.

## Crater Lake

continued from page 1

"You have to put the blue in all capital letters just to capture how beautiful it is."

The lake's blue, blue existence began with the volcanic eruption of the 12,000-foot Mount Mazama 7,700 years ago, which left a hole more than five miles in diameter.

The hole, called a caldera or volcanic basin, filled with melted snowfall, creating a lake that goes down 1,943 feet at its deepest point, making it the deepest lake in the

United States and the seventh deepest in the world.

To maintain the lake's beauty, no private boating is permitted, but boat rides are available at \$19.25 for adults and \$11.50 for children 11 years old and younger.

There are basically two ways to get to Crater Lake from Eugene.

The scenic route, which passes Diamond Lake, tacks about 20 extra minutes onto the drive. To take this route, head south toward Roseburg on Interstate 5 and take Highway 138 East to get to the park's north entrance.

A quicker way, which takes only

three hours from Eugene, is to follow I-5 and turn onto the Goshen exit, which goes to Highway 58.

Visitors who arrive on Aug. 25 will get into the park for free, skipping the \$10 entry fee per car. Bicycles, pedestrians and single motorists will be able to skip the usual \$5 fee and commercial buses can avoid the \$25 to \$200 entry fee.

Call (541) 594-3100 for more information, or e-mail park officials at [CRLA\\_Information\\_Requests@nps.gov](mailto:CRLA_Information_Requests@nps.gov).

Contact the reporter at [jilliandaley@dailymerald.com](mailto:jilliandaley@dailymerald.com)

**poppi's Anatolia**

"The Land East"  
Traditional Greek & Indian Food

Lunch  
Monday through Saturday

Dinner  
7 Nights a Week  
992 Willamette  
Eugene, Or 97401  
343-9661

**Mad Duckling Children's Theatre**

With support from the UO Summer Sessions Office and the ASUCO

Join us on the lawn of the Robinson Theatre on the UO Campus! Limited free parking is available. Discounts are available for groups of 10 or more.

**\$4 tickets for all ages**

**PINOCCHIO COMMEDIA**  
by Johnny Simon

July 30 - August 3  
&  
August 6-10 11AM

For information and reservations call 346-4192 or visit our website at <http://darkwing.uoregon.edu/~theatre>

**GOODYEAR TIRES**

**Auto Pros Inc.**  
LOCALLY OWNED

**LUBE, OIL, FILTER**

- Chassis Lube • New Oil Filter • Up to 5 Qts. 10W-30 Chevron Oil
- Clean Front Window • Vacuum Front Floor Boards

- No Appointment necessary
- Most light cars & trucks
- 3/4 or 1-ton & Extra Cab Trucks Additional

**\$15<sup>99</sup>**

**Chevron MOTOR OIL**  
POWER BY THE PROTECTION

**DOWNTOWN 1320 Willamette • 485-2356**  
**2975 West 11th 344-0007 • OPEN Sundays 11-4**

**PHOTO SPECIALS**

**JULY 29-AUG 4**

**2ND SET FREE!**

**3 x 5 prints:**  
12 exp \$2.25  
24 exp \$4.25  
36 exp \$6.25

**4 x 6 prints:**  
12 exp \$3.25  
24 exp \$6.25  
36 exp \$9.25

From 35mm C-41 full frame color film.  
(Panoramic, half frame, and negatives excluded.)

**20% OFF APS PROCESSING:**

**25 exp. (one set/two set)**  
\$6.66 / \$9.96

**40 exp. (one set/two set)**  
\$9.40 / \$14.20

Allow 1-2 days for APS processing.  
Glossy or matte finish.

**FUJICOLOR PROCESSING, INC.**

**UNIVERSITY of OREGON BOOKSTORE**  
[www.uobookstore.com](http://www.uobookstore.com)

**Premier Travel**

- Airfare Deals!!!
- Los Angeles - \$198.00\*
- Orlando - \$198.00\*
- Mexico City - \$450.00\*
- Paris - \$575.00\*

\*tax not included, restrictions may apply. Subject to change without notice.

Eurail Passes issued on-site!!!  
E-mail: [fares@luv2travel.com](mailto:fares@luv2travel.com)

1011 Harlow  
747-0909  
Student Travel Experts

**Letter Head**

**Written Home Lately??**

- Cards & Stationery
- Journals
- Wrapping Paper
- Photo Albums
- Wedding Invitations

1801 Willamette Street  
343-6374

**POLAROID DLX BACKPACK**

- CRUSH RESISTANT
- WATER RESISTANT
- 3 BAGS IN 1
- ADJUSTABLE SHOULDER STRAP
- TOP REINFORCED CARRYING HANDLE

**ONLY \$49<sup>99</sup>** (REG \$89<sup>99</sup>)

**GET THOSE GREAT SUMMERTIME MEMORIES**

**Nikon COOLPIX 2500**

- 3X Zoom • Unique inner-swivel lens design
- Uses Lithium Battery & Charger included • USB interface
- Uses CompactFlash Cards • 2.0 mega pixels CCD

**\$299<sup>99</sup>**

**Nikon N55**

- Light weight & compact design
- Advance to Exposure Flexibility
- Versatile Light Metering System
- High Performance Auto Focusing
- 3 Full Coverage AF Sensor

**\$109<sup>99</sup>** (COMPLETE WITH NIKON 28-80 LENS) **\$299<sup>99</sup>**

**NOW ONLINE at [www.THESHUTTERBUGONLINE.com](http://www.THESHUTTERBUGONLINE.com)**

**The Shutterbug** Valley River Center next to Copeland/ 485-1554

Oregon Festival of American Music 2002

**GERSHWIN TRANSFORMATIONS**

**JAZZ AT OFAM**

DICK HYMAN, JAZZ ADVISOR  
DEREK SMITH • KEN PEPOWSKI  
RANDY SANDKE • & more!

**August 1-10**  
Hult-Shedd-Cuthbert

Tickets: 682-5000  
Info: 687-6526  
[www.ofam.org](http://www.ofam.org)

**The Eye Center**  
John H. Haines, MD  
Kent A. Korman, MD

**afpa**  
aesthetic plastic surgery  
Lee B. Daniel, M.D.

**SAFeway FOOD & DRUG** **UNITED**