

# UO crews tackle summer repairs

The beginning of summer classes also marks the start of various summer maintenance projects around campus

By Michelle Meuwissen  
Oregon Daily Emerald

They get up early, making noise and working throughout the day. Crews work while days are long, fewer students roam the campus and weather is supposed to be at its best. Summer repair projects begin along with summer classes at the University. People may have seen or heard the work being done, but what is it all for?

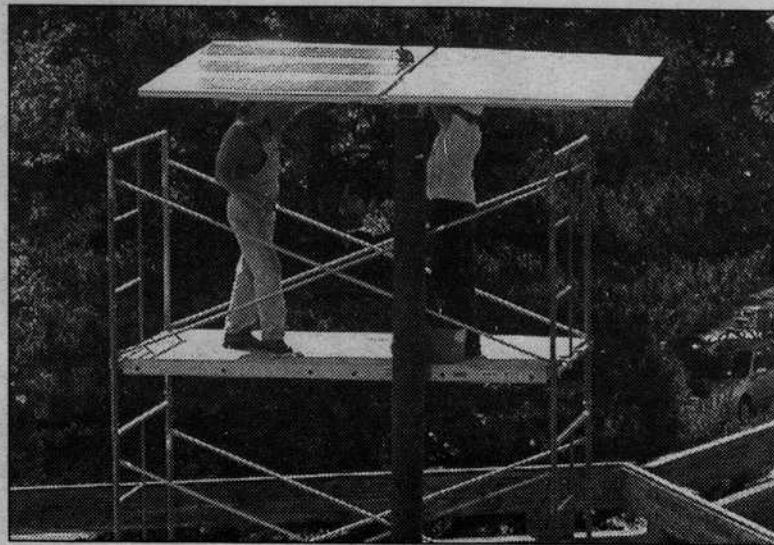
"We try to do more major improvements over the summer. Some of this would be impossible to do if the dorms were full," Exterior Team supervisor Tim King said. While general upkeep is ongoing, there are a few focuses for repair and construction crews this summer.

The ongoing construction on the Lillis Business Complex will update business facilities and make more room for future students.

Pacific Hall will receive a makeover this summer, with repair work on multiple floors of the building. Crews are working on ceilings in 16 Pacific and remodeling lab spaces in the ecology department.

"The departments hire us to make improvements around campus; Pacific is our focus this summer," Construction Team supervisor Mike Haneson said. The University wants to make space in Pacific Hall for new faculty — in anticipation of more than 3,000 new students this fall.

A crew has installed three solar



Michael J. Kleckner Emerald

Solar installer Bruce Kelley, left, and project manager Allen Hall of The Energy Service Company, install the first solar panel on the roof of the EMU on Thursday.

towers Friday on the southeast balcony of the EMU. This initial phase is intended to build awareness about renewable energy and the EMU solar project. Other repair projects in the EMU include extensive recarpeting, plumbing work and running water lines to the lawns. "There is a lot of work to be done," EMU Facilities Manager Dana Winitzky said. "We're just trying to work it all in."

According to Director of Campus Operations George Hecht, certain times of the year are not good for construction. "There are money considerations and weather factors," Hecht said. "Noise, smells and limited room are also factors."

Ground repair is another project being tackled this summer. The University has identified areas of the

Humpy Lumpy Lawn main walkway as a trip hazard and two-thirds of it will be replaced in August.

"Safety issues usually take priority," King said. "We're trying to fit the need for campus safety by working on the key parts of campus."

Along with sidewalk repairs, lighting improvements on campus are another focus for crews to accommodate safety needs. Lighting additions may happen this summer, but budget aspects can interrupt repairs.

"Other improvements are needed, but we're operating on a tighter budget now," King said. "We try to do what we can — we just don't have as much money for improvements around campus as we would like."

Michelle Meuwissen is a freelance reporter for the Emerald.



summer term hours

## Erb Memorial Union

### building hours

#### Upper Level

Monday-Thursday	7am-7pm
Friday	7am-5pm
Saturday-Sunday	closed

#### Ground Floor

Monday-Friday	7am-8pm
Saturday-Sunday	closed

### food service

#### Main Floor

Greatful Bread	7am-3pm
Subway	8am-4pm
Jamba Juice	9am-4pm
Holy Cow Café	11am-3pm closed 7/10-7/16

#### Marketplace Café

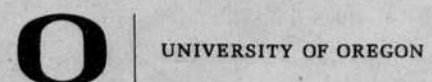
Monday   July 8 <sup>th</sup>	Orient Express
Thursday   July 11 <sup>th</sup>	Orient Express
Friday   July 12 <sup>th</sup>	Pita Pit
Monday   July 15 <sup>th</sup>	India House
Thursday   July 18 <sup>th</sup>	India House
Friday   July 19 <sup>th</sup>	Pita Pit
Monday   July 22 <sup>nd</sup>	India House
Thursday   July 25 <sup>th</sup>	Kim's Bento
Friday   July 26 <sup>th</sup>	Kim's Bento

#### Ground Floor

Buzz Coffeeshouse	9am-4pm
Erb Essentials	9am-4pm

### other services

The Break	noon-8pm
Computer Lab	7:30am-8pm
Copy Center	7:30am-4:30pm
Craft Center	10am-9:30pm
Outdoor Program	7am-7pm
Ticket Office	9am-5pm
UO Scheduling	8am-5pm
UO Card Office	8am-5pm
US Post Office	8:30am-5pm



### Today's crossword solution



### Premier Travel

• Summer Specials!!! •  
 Cancun - \$650.00\*  
 San Jose, CR - \$650.00\*  
 Quito - \$930.00\*  
 Melbourne - \$950.00\*  
\*tax not included, restrictions may apply. Subject to change without notice.  
 Eurail Passes issued on-site!!!  
 E-mail: fares@luv2travel.com  
 1011 Harlow  
 747-0909  
 Student Travel Experts

## BIRKENSTOCK



Designed to follow every curve and hollow of the human sole

## FOOTWISE

THE BIRKENSTOCK STORE

181 E Broadway Downtown Eugene 342-6107  
 Mon-Sat 10-6 and Sun 11-5

**Advertise. Get Results.**

Oregon Daily Emerald 346-3712

**Diablo's**  
 GET A NIGHT LIFE  
 Downtown Lounge  
 6/24-6/29  
 MONDAY UPSTAIRS  
 Blue Mondays  
 (DJ's playing a Kasey/Cole and punk rock music)  
 TUESDAY UPSTAIRS  
 Bands and DJs TBA  
 WEDNESDAY UPSTAIRS  
 salem lights, stateside drive, birch riley, pomeroy  
live bands garage punk/indie  
 DOWNSTAIRS  
 revolver  
 djs howie, jaytee, sawada  
 hip hop and house  
 THURSDAY  
 180's nite  
 2floors, 4djs, all 80s  
 djs kok blok, dmoop  
 drock, ontropy  
 FRIDAY UPSTAIRS  
 JOHN BODLEY & JOHN MADDIS  
(FOOLY FIGHTING ALIENS ROCK)  
 BEND  
(cyber jam band)  
 DOWNSTAIRS  
 Nanny Booty!  
 DJ's Brockie, Premier  
 hip hop, requests  
 SATURDAY UPSTAIRS  
 RAGING FAMILY  
(hip-hop, turntablism)  
 DOWNSTAIRS  
 Big Pimpin  
 DJ's Howie, Nanny  
(live bands)  
 959 PEARL ST.  
 21+, 9PM-2:30AM  
 www.diablosdowntown.com