

CRIME WATCH

Disorderly Conduct and Vandalism

Wednesday, May 22, 1:11 a.m.:
DPS received a report that a car tire had been slashed on Kincaid Street.

Thursday, May 23, 5:55 p.m.:
A caller reported that students were trying to break into the EMU.

Friday, May 24, 1:58 a.m.:
DPS received a report of people throwing bottles near Cloran Hall.

Sunday, May 26, 1:54 p.m.:
A caller reported two males were

chasing cars in the H.P. Barnhart parking lot.

Sunday, May 26, 3:39 p.m.:
A caller reported a fight in progress near Sheldon Hall.

Drugs and Alcohol

Thursday, May 23, 12:30 a.m.:
DPS officers contacted a person in possession of less than an ounce of marijuana.

Thursday, May 23, 5:40 p.m.:
DPS received a report of people smoking marijuana on Agate Street.

Friday, May 24, 12:05 a.m.:
DPS received a report of people smoking marijuana in Spiller Hall.

Sunday, May 26, 1:46 a.m.:
DPS received a report of a minor in

possession of alcohol in Watson Hall.

Theft

Thursday, May 23, 1:51 p.m.:
A purse was reported stolen from Gerlinger Hall.

Thursday, May 23, 4:41 p.m.:
A bike was reported stolen from Allen Hall.

Saturday, May 25, 10:32 a.m.:
Clothes were reported stolen from a laundry facility in H.P. Barnhart.

Violence and Harassment

Thursday, May 23, 11:45 a.m.:
A caller in Oregon Hall reported receiving a harassing telephone call.

SOURCE: DPS

Alcohol

continued from page 1

State law requires mandatory sentencing for individuals who furnish alcohol to a minor or who "exercise control" over a location, such as a party, where a minor is drinking alcohol. But current city codes are more lenient.

Stronach said revisions to the city code are necessary because current offenders are often tried by the state instead of municipal courts. The new proposal clarifies city law regu-

lating alcohol-related offenses in the hopes that more cases find their way into the local system, which also ensures the money paid out in fines goes to the city and not the state.

Stronach said he was not thinking about city revenues when his department drafted this proposal.

"Quite frankly, if City Council does not pass this, it will mean more money out of pocket for the offenders," Stronach said.

Harding, who is also president of Pi Kappa Alpha, said he hopes the final version of the proposal keeps out

the mandatory sentencing provision.

If his fraternity held a party and he was slapped with a \$350 fine because minors were consuming alcohol in his house, Harding said he wouldn't be able to afford the cash payment and would prefer a diversion program.

"I'd have to call my parents and say, 'There was a party at my house the night before. Can you pay this fine?'" he said.

E-mail reporter Brook Reinhard at brookreinhard@dailyemerald.com.

Pallone

continued from page 1

LGBTQA Co-Director Nils Hashe said he thinks Pallone is a mentor for future generations because he breaks down gay stereotypes.

"I think the media tends to project gay people in a certain way, and many people think because a man is gay, he wants to be a woman — fitting into the feminine role," he said. "This is not the case."

Pallone travels around the United States speaking about gay sensitivity in universities, colleges and businesses nationwide.

"Pallone is a one-man c.lly speaks about these issues around the nation for a living," said Rosana Costello, Geographic Information System Analyst for the Willamette National Forest.

Costello said she wanted to bring Pallone to the Eugene area to create an awareness of sexual orientation discrimination because U.S. Secretary of Agriculture Ann Venemen refused to recognize the month of June as Gay Pride Month within the department.

When President George W. Bush came into office, he refused to nationally recognize Gay Pride Month,

which had been previously established under former President Bill Clinton's administration. Secretaries had the option of recognizing it within their individual departments.

"I think this is going to be a great opportunity to address sexual orientation and harassment," Costello said.

Martin said the University will be recognizing the month of June as Gay Pride Month and Pallone's appearance is just one of the events scheduled.

E-mail reporter Danielle Gillespie at daniellegillespie@dailyemerald.com.

New Program Announcement!

What: Professional Distinctions.

Why: Enhance your education with a specific skill*, an internship, and new ways to connect with the next step in your career.

When: Begins now!

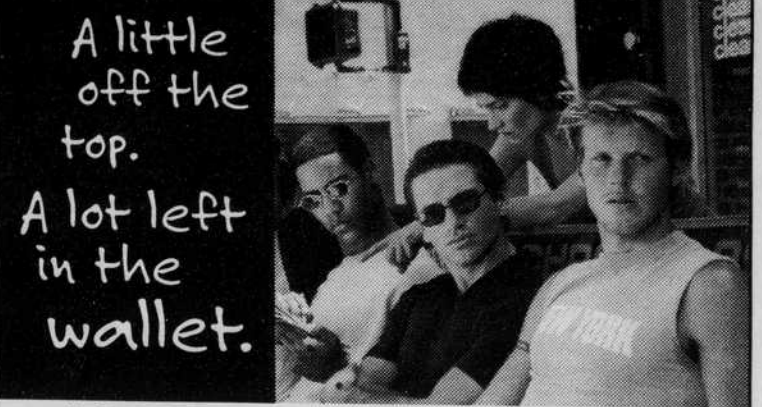
Where: Visit <http://uodistinctions.uoregon.edu> to get started.

***Distinction Areas:** Analytical Reasoning • Arts Management
Cross-Cultural Literacy • Data Analysis • Geographic Information
Science & Technology • International Communication & Culture (Asia, Africa, Central & Latin America, Europe) • Leadership • Management
Professional Research & Presentation • Written Communication

PROFESSIONAL
DISTINCTIONS
UNIVERSITY OF OREGON



A new program brought to you by the UO faculty and the Career Center.



Still the Best. Still just ...

\$12⁰⁰

Trendy and professional
haircuts by friendly
haircare specialists.

Call Ahead Service available at

WILLAMETTE SQUARE

2526 Willamette Ave.

683-1405

Open 7 days a week; Mon-Sat 9am - 7pm • Sun 11am - 4pm

SUPERCUTS

As hip as you want to be.

School of MUSIC
UNIVERSITY OF OREGON
& Department of DANCE



FINAL CONCERTS!

Clip and Save this Calendar

For more information on School of Music events, call 346-5678, or call Guardline at 485-2000, ext. 2533 for a taped message.

Wed. CAMPUS BAND, CAMPUS ORCHESTRA

5/29 UO Ensembles 8 p.m., Beall Hall
FREE Admission

Thu. CHORAL EXTRAVAGANZA

5/30 UO Choral Ensembles 8 p.m., Beall Hall
\$5 General Admission, \$3 students & senior citizens

Fri. THE JAZZ CAFE

5/31 UO Jazz Combos 8 p.m., Room 186 Music
\$5 General Admission, \$3 students & senior citizens

Sat. FUTURE MUSIC OREGON

6/1 UO Music Technology Program 8 p.m., Room 198 Music
\$5 General Admission, \$3 students & senior citizens

Sun. SPRING CHAMBER MUSICAL

6/2 UO Chamber Ensembles 1 p.m., Beall Hall
\$5 General Admission, \$3 students & senior citizens

Mon. 100th MONKEY ENSEMBLE

6/3 UO Contemporary Music Ensemble 8 p.m., Beall Hall
FREE Admission

Wed. DANCE QUARTERLY

6/5 Department of Dance 7 p.m., Dougherty Dance Theater
FREE Admission

Wed. GREEN GARTER BAND

6/5 UO Ensemble 8 p.m., Beall Hall
\$5 General Admission, \$3 students & senior citizens

Thu. UNIVERSITY OPERA ENSEMBLE

6/6 Scenes & Arias from Operas 8 p.m., Beall Hall
\$5 General Admission, \$3 students & senior citizens

Sun. OREGON PERCUSSION ENSEMBLE

6/9 UO Ensemble 2 p.m., Room 198 Music
\$5 General Admission, \$3 students & senior citizens

Sun. UO GOSPEL CHOIR, GOSPEL ENSEMBLE

6/9 UO Ensembles 6 p.m., Beall Hall
\$5 General Admission, \$3 students & senior citizens

For our complete calendar, check: music.uoregon.edu



Taurus:

What are you doing this weekend? Check your

PULSE