

# Logo

continued from page 1

themselves which of the two logos to use on letterheads, business cards and other stationery. He said they could also use a combination of both. The decision does not eliminate the "Fighting Duck" or interlocking "UO" logos, he said.

Certain apparel companies interested in using the Duck for their merchandise may continue to do so.

And the interlocking "UO" will still adorn garbage cans and the Moshofsky Center. But the president said he wanted continuity in the public's image of the University.

"The University is represented by dozens, if not hundreds, of different signs, banners, initials, mascots and so forth," Frohnmayer said. "While some of that is a great exercise in imagination ... there is significant confusion on the part of the public as to what we are representing at all."

ASUO Student Senator Eric Bailey, who sits on the University Senate Executive Committee, said he was "perturbed" by Frohnmayer's decision.

He said student leadership didn't find out until early February — months after informal discussions began — about the University's intentions to pare down its logos. Bailey said that having separate logos for sports and academics would be a good thing. He said

abandoning the seal for the "O" would have caused an uproar.

"I've got an 'O' on my hat," he said. "I'm not anti-'O,' but I'm not pro-'O' either. The words 'Mind Moves Mass' totally embrace the academic spirit. This decision is not as bad as it could have been, but it's not everything I was hoping for, either."

E-mail reporter Eric Martin at ericmartin@dailyemerald.com.

### Today's crossword solution

R	I	P	E	W	A	S	P	R	O	P	E	S
A	D	A	M	A	R	N	O	E	R	E	C	T
T	E	R	I	N	E	A	T	S	T	A	R	E
E	A	R	N	E	D	R	A	S	P	C	U	P
S	L	Y	E	R	V	E	S	T	I	G	E	
	N	I	C	E	H	E	R	E	T	I	C	
C	E	N	T	E	R	E	D	R	E	L	I	V
A	V	E	E	R	A	T	O	M	A	N		
R	E	F	E	R	S	S	H	I	P	M	E	N
P	L	A	N	E	T	S	I	D	E	A		
R	E	P	E	A	T	S	S	L	A	S	H	
O	B	I	I	D	L	E	S	T	A	T	U	E
G	R	O	A	N	A	N	T	E	I	R	I	S
R	O	U	T	E	D	O	O	R	S	I	T	S
E	S	S	E	S	S	N	O	B	E	A	S	E

# Attacks

continued from page 1

"The most important thing to understand is if an assault happens to a person, it's not their fault," she said.

Jocelyn Hollander, an assistant sociology professor who has spent five years at the University studying cases of violence against women, agreed.

"Women are seen as victims," and the actions they take to defend themselves are often ignored, Hollander said.

She advocated for students to take self defense classes, which can help women feel confident enough to travel through the shady spots on campus.

"I'd walk (in the cemetery) at night," she said.

Hollander and Manoguerra both emphasized that students should use common sense and learn how to be cautious in all circumstances, not just around unfamiliar people. More than 85 percent of attacks or sexual assaults against women are committed by an acquaintance, friend or relative, not a stranger. And often a victim doesn't report an attack because of the shame and guilt associated with the crime.

"Even at SASS, we don't hear about every assault that occurs," Manoguerra said. She cited a 1999

## The University will hold two meetings this week addressing campus safety:

**4:00 p.m. Wednesday in the Knight Library Browsing Room:**

Discussion about DPS's proposed volunteer observer force, which would supplement security patrols.

**5:30 p.m. Thursday in the Knight Library Browsing Room:**

Campus safety forum about recent attacks, new security programs and proposals for policing as well as public information.

Department of Justice study that showed only 28 percent of known assaults against women were actually reported to police or other authorities.

### Tracking Attacks

Since the beginning of the 2000-01 academic year, EPD has tracked 104 incidents that directly affect student safety.

The 104 incidents have occurred in an area bordered by Centennial Boulevard on the north, East 20th Avenue on the south, Walnut Street on the east and Patterson Street on the west, which encompasses the campus and goes several blocks beyond the Willamette River.

They include 49 burglary incidents, nine cases of criminal trespass, 13 cases of physical harassment, 15 cases of public indecency, nine first-degree rapes, seven instances of sexual abuse

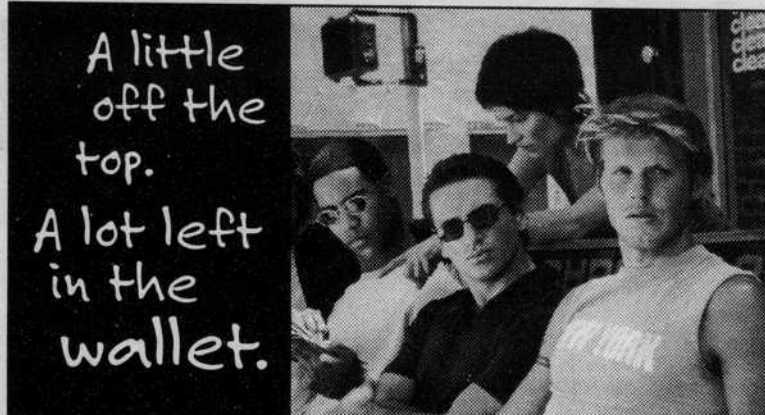
and two "suspicious circumstances," which Sgt. McKee defines as incidents where someone is observed acting suspiciously but hasn't committed a crime yet.

DPS was only able to supply statistics since the beginning of this school year. DPS has reported 12 incidents of indecent exposure (all but one of which involved masturbation), four cases of sexual assault and one attempted armed robbery.

Despite the crimes that have occurred on campus, police officers such as McKee said they're confident they'll eventually track down both the campus attacker and man or men responsible for the masturbation cases.

"We have technology on our side," McKee said. "I'm optimistic that we'll be able to make a link."

E-mail reporter Brook Reinhard at brookreinhard@dailyemerald.com.



Still the Best. Still just ...

**\$12<sup>00</sup>** Trendy and professional haircuts by friendly haircare specialists.

Call Ahead Service available at  
**WILLAMETTE SQUARE**  
 2526 Willamette Ave.  
**683-1405**

Open 7 days a week; Mon-Sat 9am - 7pm • Sun 11am - 4pm

**SUPERCUTS**  
 As hip as you want to be.

**Concerned about recent crimes committed on or close to campus?**

**Feeling unsafe on campus after dark?**

**Have an idea for a new initiative that could make the campus a safer place?**

## CAMPUS SAFETY FORUM

Thursday, April 11, 2002

5:30-7:00 P.M.

Browsing Room, Knight Library

**An opportunity for students, administrators, and staff to work together on campus safety issues.**

After a brief presentation to update everyone on current campus safety efforts, small groups will be formed to discuss the following:

- The campus after dark
- Sexual assault and other sex crime prevention and response
- Campus communication about safety issues
- How to get involved in making campus safer

**Your participation in this forum would be of value to the campus community!**

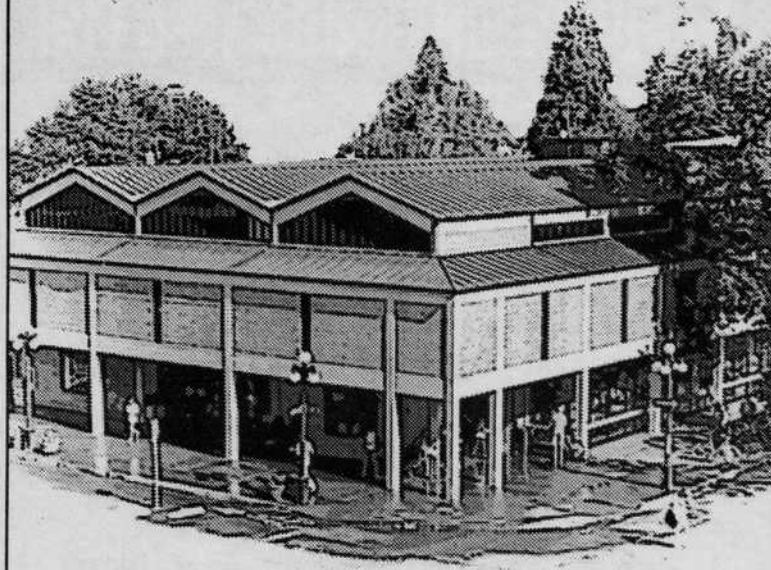
Office of Student Life • 164 Oregon Hall • 346-3216

Accommodations for people with disabilities will be provided if requested in advance.

## UO BOOKSTORE ANNUAL MEETING

GERLINGER LOUNGE / 3:30 p.m.  
 THURSDAY, APRIL 18, 2002

Open to all current UO students, faculty and staff members



FLOOR OPEN TO RECOMMENDATIONS OR PROPOSALS  
 PRIZE DRAWINGS, DRINKS & SNACKS

### NOMINATIONS FOR BOARD OF DIRECTORS

Board members receive a \$50 monthly stipend to attend a monthly meeting

Nominate yourself or someone else:

- 1 Student-at-Large position for 2 year term
- 1 Graduate position for 2 year term
- 2 Sophomore positions, each for a two year term
- 1 Faculty at large position for 2 year term
- 1 Officer of Administration for 2 year term or, Classified Staff person for 2 year term

The ODE Classified section ... much more than a place for the crossword